

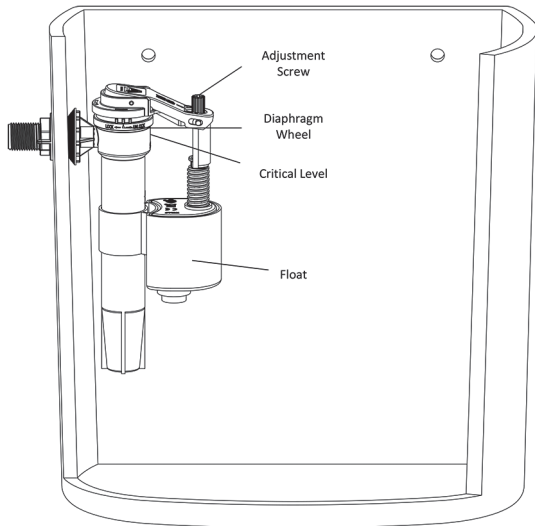


skylo side entry float valve



WARNING

We shall not be responsible or liable for any failure of, or damage to, this plumbing product caused by the use of chlorine/bleach cleaners or related products added to the tank water. Use of such products will void the warranty and may result in product failure, possibly causing property damage. Do not over tighten plastic nuts and always turn off water supply when installing / removing toilet cistern parts.



Please note: Save this instruction sheet for future reference
IMPORTANT: DO NOT use plumber's putty to seal this fitting

For more information please contact:

VIVA Sanitary

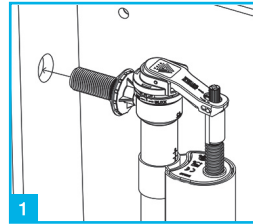
Units 1-2 Capitol Trading Park, Kirkby Bank Road
Knowsley Industrial Estate, Liverpool, L33 7SY

Tel: 0151 546 0531 Fax: 0151 549 4187

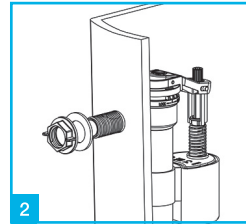
E-mail: sales@vivasanitary.co.uk

www.vivasanitary.co.uk

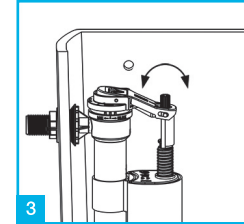
INSTALLATION INSTRUCTIONS



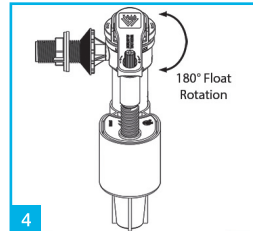
1 Remove the plastic washer and nut from the thread and place the valve in the correct position inside the cistern ensuring the conical rubber seal sits evenly inside the hole.



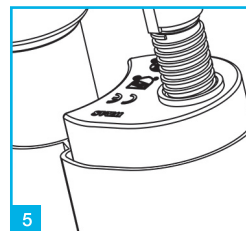
2 Secure the valve to cistern by replacing the plastic washer and screwing the nut to the thread. Do not over tighten.



3 The water level can be adjusted by turning the adjustment screw (clockwise for more water, anticlockwise for less water).

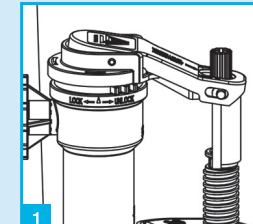


4 The valve has a float rotation system, allowing the float to be rotated 180°. This is really beneficial if space is an issue.

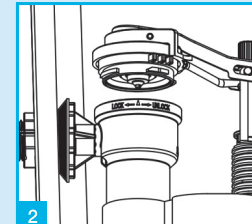


5 The float is also protected by a float shield, so there is never any restriction to the float movement, even when the valve is touching another component or the cistern wall.

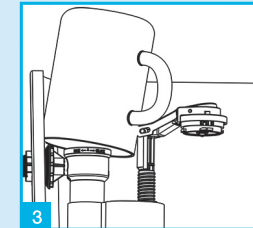
TROUBLESHOOTING



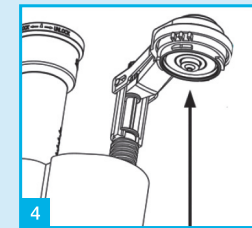
1 Turn off water supply and set access wheel to unlock.



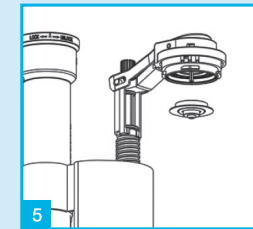
2 Lift the top assembly away from the valve holding the arm.



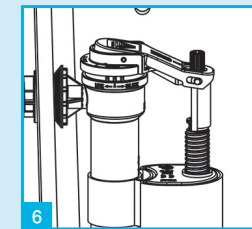
3 Turn water supply on and off to clear any debris. Hold a cup over top to prevent any splashing.



4 Remove diaphragm washer and clean with water or replace.



5 Re-insert diaphragm washer.



6 Refit top assembly complete with diaphragm.

Installation videos and further information available now.

