

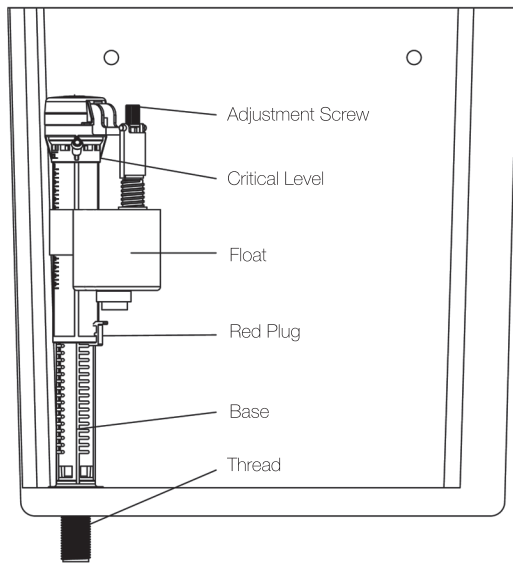


# skylo bottom entry float valve



## WARNING

We shall not be responsible or liable for any failure of, or damage to, this plumbing product caused by the use of chlorine/bleach cleaners or related products added to the tank water. Use of such products will void the warranty and may result in product failure, possibly causing property damage. Do not over tighten plastic nuts and always turn off water supply when installing / removing toilet cistern parts.



Please note: Save this instruction sheet for future reference  
**IMPORTANT: DO NOT use plumber's putty to seal this fitting**

For more information please contact:

**VIVA Sanitary**

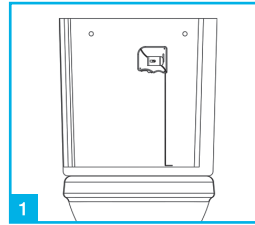
Units 1-2 Capitol Trading Park, Kirkby Bank Road  
Knowsley Industrial Estate, Liverpool, L33 7SY

Tel: 0151 546 0531 Fax: 0151 549 4187

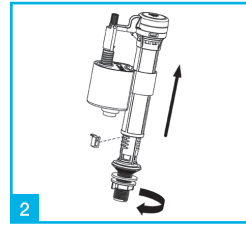
E-mail: sales@vivasanitary.co.uk

www.vivasanitary.co.uk

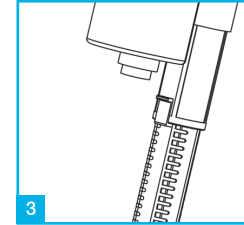
## INSTALLATION INSTRUCTIONS



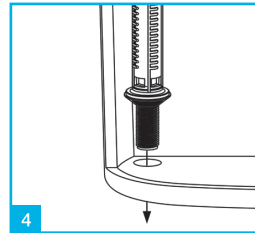
1 Measure the height of the cistern, so the valve can be set to the correct height.



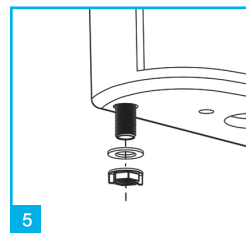
2 To adjust the height remove red plug, turn the valve base clockwise and then adjust height to the correct level



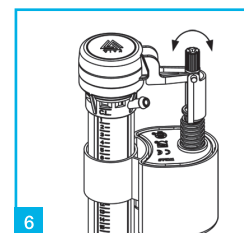
3 Once the correct height is achieved, turn base back anticlockwise and re-insert red plug.



4 Remove the plastic washer and nut from the thread and position the valve in the cistern ensuring the conical rubber seal sits on the hole at the cistern base.

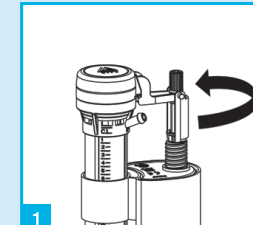


5 Secure valve to the cistern by replacing the plastic washer and screwing the nut to the thread. Do not over tighten.

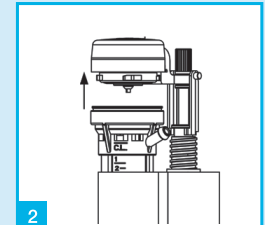


6 The water level can be adjusted by turning the adjustment screw (clockwise for more water, anticlockwise for less water).

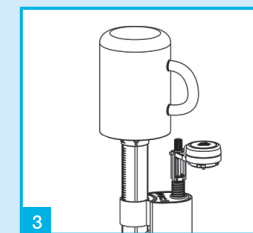
## TROUBLESHOOTING



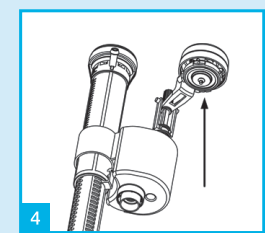
1 Turn off water supply and turn arm anticlockwise. Do not remove cap.



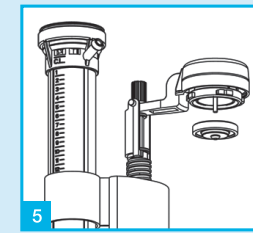
2 Lift the top assembly away from the valve holding the arm.



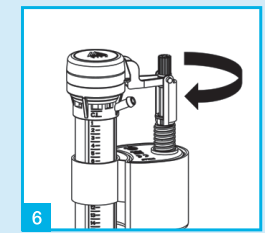
3 Turn water supply on and off to clear any debris. Hold a cup over top to prevent any splashing.



4 Remove diaphragm washer and clean with water or replace.



5 Re-insert diaphragm washer.



6 Refit top assembly complete with diaphragm and turn on water supply.

Installation videos and further information available now.

