



For a cleaner conscience



# ENlight<sup>®</sup>

Thermostatic Electric Shower

## User Guide

# Welcome to your ENlight® thermostatic electric shower



Model shown is ENlight® UNIQ - 9.5kW Taupe

# Product Information

- Tri-Protect® precise thermostatic temperature control
- Feedback panel showing selected temperature and shower duration
- Timing function - helping reduce shower time and running costs
- 5-minute Eco Mode to help reduce water usage and costs
- Phased shutdown - reducing unwanted scale build up
- Various accessory options available
- Efficient A energy rating



## IMPORTANT SAFETY ADVICE

The ENlight® Shower **MUST BE** switched off at the isolating switch when not in use. This is a safety procedure recommended for all electrical appliances.

The shower head and hose supplied with this product are safety critical parts of your shower. Failure to use genuine Triton parts may cause injury and invalidate your guarantee.

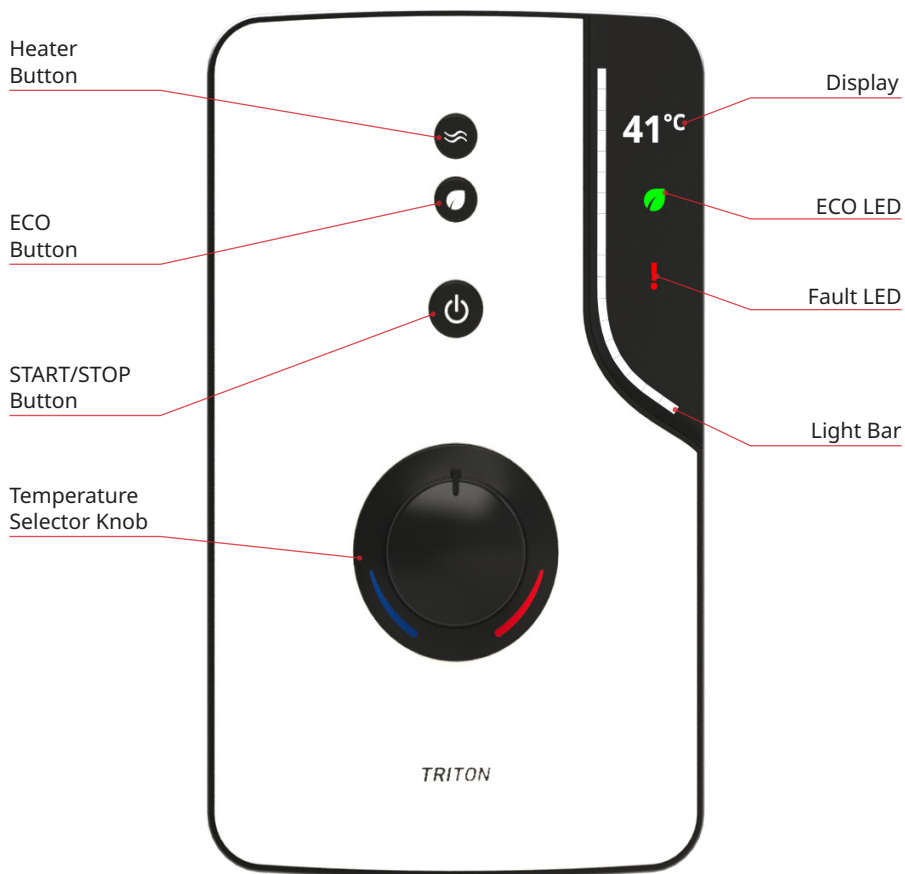
# Contents

5	ENlight® Product Layout
6	Quick Start
7	Switching the Shower On
8	Adjusting the Temperature
9	Switching the Shower Off
10	ECO Mode
11 - 13	Care and Cleaning
14	Error Codes
14	ENlight® Product Support

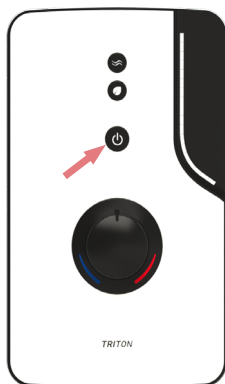
## **⚠ WARNING ⚠**


This appliance can be used by children aged from 3 years and above and persons with reduced physical, sensory or mental capabilities or lack of experience and knowledge if they have been given supervision or instruction concerning use of the appliance in a safe way and understand the hazards involved. Children may not play with the appliance. Cleaning and user maintenance shall not be made by children.

# ENlight® Product Layout



# Quick Start



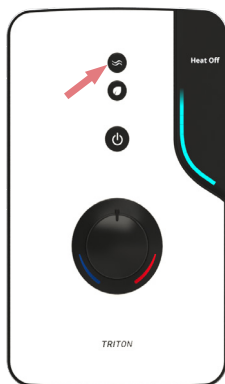
Press the Start/Stop Button  in Standby to start showering.




Shower duration is depicted on the Light Bar.




Adjust the showering water temperature with the Temperature Selector Knob.




Press the Heater Button  to run the water at ambient temperature.



Press the Start/Stop Button  to stop showering and enter Standby




Press the ECO Button  in Standby to run the shower for 5 minutes\*.

\* Can be adjusted to 3 minutes (see Installation Instructions/Shower Settings)

# Switching the Shower On



When the electricity supply to the shower is switched on, the Light Bar will pulse to indicate that the product is in Standby mode. Any of the three central buttons can be used to start the shower, and all perform different functions depending on which is pressed. Please see Page 6 for the function of the Heater Button ≈ from Standby, and Page 8 for the function of the ECO Button 🍃 from Standby.

Press the Start/Stop Button  to start the shower normally. A welcome message will briefly appear on the display, before showing the showering water temperature.

Whilst showering, the Light Bar is used to indicate showering time. Initially, the Light Bar will count upwards for five minutes. After this, the Light Bar will play an animation which will repeat (becoming more frequent with the length of time) until the shower is turned off.



Welcome Message appears briefly once shower is started.

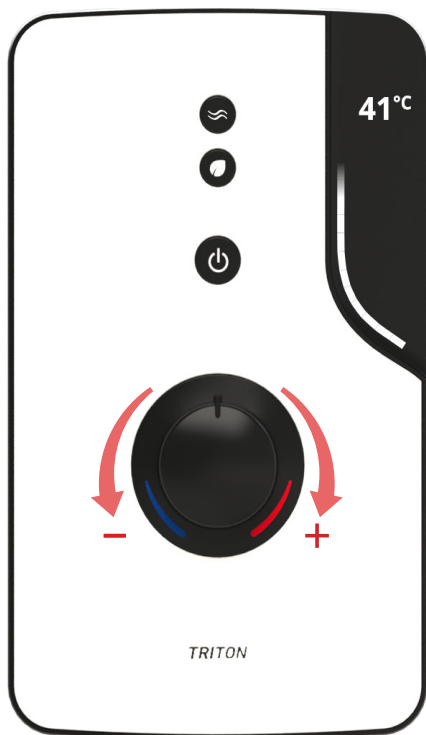


Light Bar gradually fills up, and becomes completely filled after five minutes.





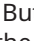
An animation occurs on the Light Bar, repeating and increasingly more frequent as time elapses.

# Adjusting the Temperature



## Heater Button

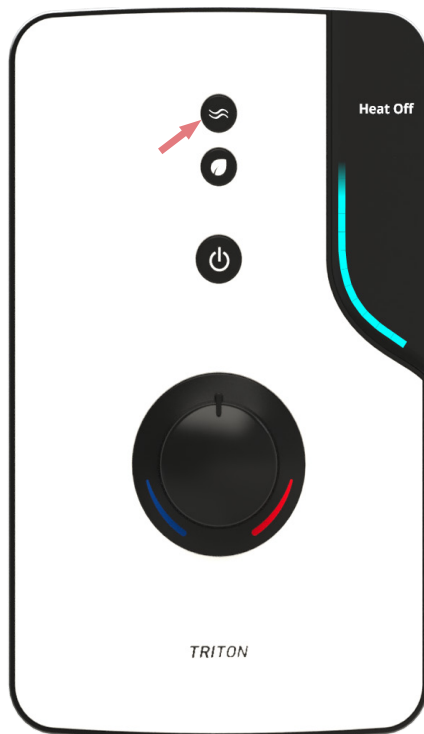
Press the Heater Button  whilst showering to run the shower at ambient water temperature. 'Heat Off' will be shown on the display, and the Light Bar illumination will turn blue. Press the Heater Button  again to return the shower to normal running, and the showering water temperature will reappear on the display.

Press the Heater Button  whilst in Standby to start the shower running at ambient water temperature.

## Temperature Selector Knob

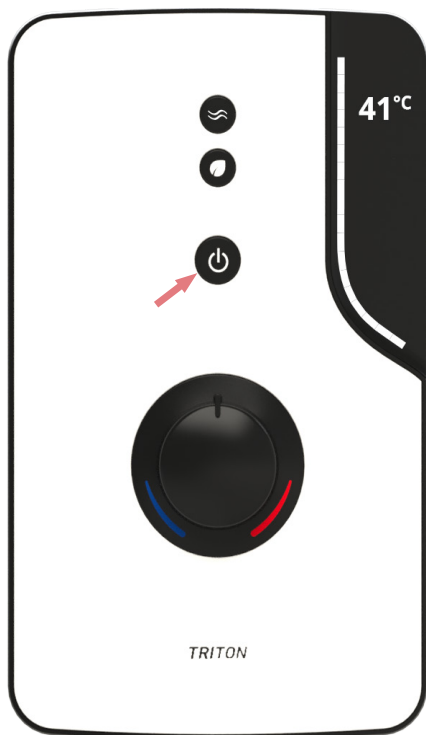
The showering water temperature is altered by rotating the Temperature Selector Knob.

Turn the knob anti-clockwise to make the showering water cooler. Turn it clockwise to make the showering water hotter.





# Switching the Shower Off



Press the Start/Stop button whilst showering to turn the shower off. By default, the shower will automatically shut down after twenty minutes of operation, though this can be reduced to ten minutes (refer to the installation guide for more information).

Before turning fully off, the shower will perform a Phased Shut Down routine, which protects the ENlight® from overheating by purging the heater can of hot water. The duration of the shower will be shown on the display during Phased Shut Down and the Light Bar will perform a shutdown animation.

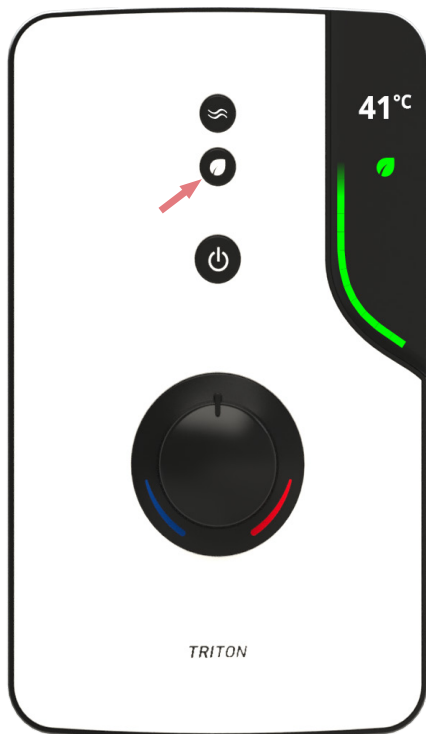



Shower duration is displayed during Phased Shut Down.



Shower automatically enters Standby after Phased Shut Down.


# ECO Mode



Press the ECO Button  whilst in Standby to activate ECO Mode, which will run the shower for five-minutes\* before automatically entering Phased Shut Down.

\* Can be adjusted to 3 minutes  
(see Installation Instructions/Shower Settings)

The ECO LED will be lit to indicate that ECO Mode is active. The Light Bar will be fully illuminated in green at the start of the shower and will count down over the course of the ECO timer.

ECO Mode can only be started from Standby, and cannot be activated whilst the shower is already running. However, when active, ECO Mode can be cancelled by pressing the ECO Button . The shower will then behave normally: the ECO LED is unlit, the ECO timer is removed and the Light Bar will change to the behaviour described on Page 7.



Welcome Message appears briefly once shower is started.



Light Bar counts down.



Shower automatically enters Phased Shut Down.

# Care and Cleaning

## General Notes

Fitting the correct type of shower head or fixed head is critical to the safe performance of your shower, especially if you have an electric shower. Some shower heads are only suitable for use on mixer showers as the flow of water from them can be restricted or stopped completely if used on an electric shower, which can result in a build-up of potential hot water which could, under pressure, be unexpectedly released.

You can therefore, rest assured when you order a genuine Triton electric shower head or fixed head that it has been fully tested for use in the UK on all electric shower types.

## Inspecting the Shower Hose

Your shower hose should be inspected from time to time for signs of damage or internal collapse.

Internal collapse can restrict the flow rate from the shower head and may cause damage to the shower, especially an electric shower.

Triton recommends use of a branded anti-twist hose on all showers to ensure continuous safe performance.

**To inspect your hose:**

- 1. Unscrew the hose from the shower head and the outlet connection.**
- 2. Inspect the hose for damage, internal kinks, etc.**
- 3. If necessary, replace the hose.**

## Cleaning the Shower Accessories

Triton recommends that all products are cleaned using warm, soapy water.

**DO NOT** use abrasive or aggressive chemical cleaning products as this may affect the product surface and finish.

Before cleaning, turn off the electricity supply to avoid the shower being accidentally switched on. The shower head and fixed head may be cleaned by simply rubbing your thumb over the spray plate.

**IT IS IMPORTANT TO KEEP THE SHOWER HEAD AND FIXED HEAD CLEAN TO MAINTAIN THE PERFORMANCE OF YOUR SHOWER.**

The hardness of the water will determine the frequency of cleaning. For example, if used every day in a very hard water area, it may be necessary to clean the shower head and/or the fixed head on a weekly basis.

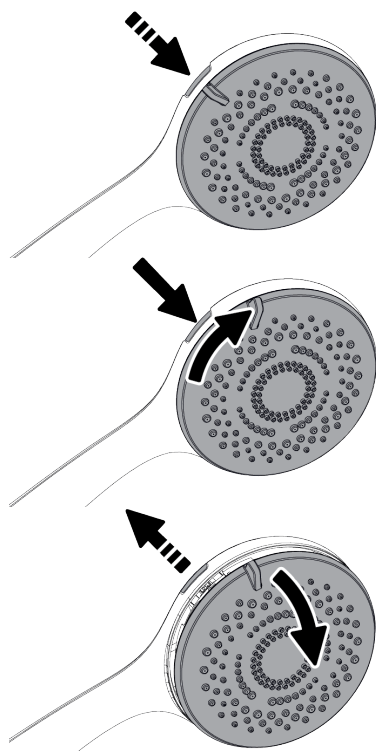
# Care and Cleaning

## Shower Head

Five shower head spray patterns are available.

Adjust the spray pattern by turning the lever on the shower head in either direction until the desired pattern is obtained. These positions are located at 4, 5, 6, 7 and 8 o'clock, when the shower head is in the vertical position.

## Removal of the Spray Plate for De-Scaling



1. Rotate the spray plate clockwise until it reaches the stop position facing the removal button.
2. Press and hold the removal button.
3. With the removal button held in, rotate the face plate clockwise past the button until it stops.
4. Release the button and gently pull the face plate away from the body using the adjustment lever.

**DO NOT** remove the inner plate. Removing this will invalidate any product warranty.

## IMPORTANT

Should any difficulty arise when trying to remove the spray plate, **DO NOT** try to force it out of the body by hand or by using tools such as a screwdriver. Reset the spray plate to the lock position shown in step 6 and repeat steps 1-4.

# Care and Cleaning

## Replacing the Spray Plate

5. The spray plate and face plate **MUST** be aligned correctly for re-installation.

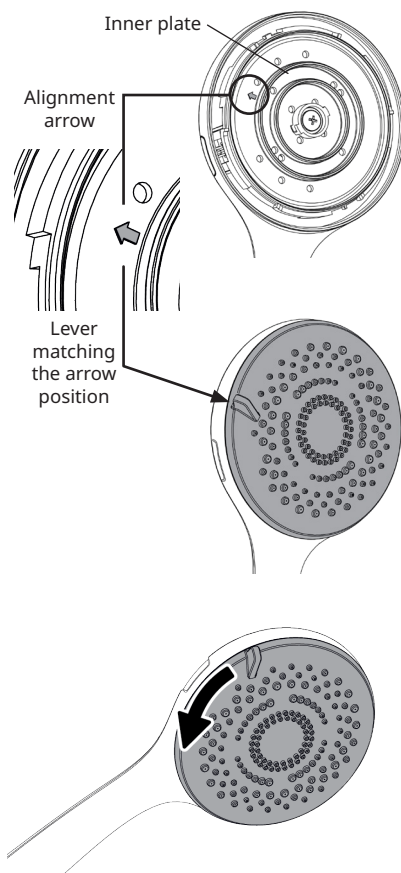
a. Ensure that the inner plate is turned fully clockwise until it stops. The alignment arrow position is approximately 9 o'clock when the shower head is in the vertical position.

b. Align the lever with the arrow position and gently press the spray plate until the edges sit flush with the body of the shower head.

**Should any difficulty arise, DO NOT try to force the spray plate back into position. Please ensure the arrow and lever positions are correct.**

6. Once in place, to lock the spray plate back into the mechanism, it **MUST** be rotated fully anti-clockwise until it stops.

**IMPORTANT:** The shower head should be directed towards waste and the shower switched on to ensure the spray plate is locked into the mechanism before use.







# Error Codes



ENlight® automatically checks the operation of the product. In the event that a fault is detected, the Error LED is lit, the Light Bar will be illuminated in red and an error message will be shown on the Display.

Some error messages contain a Fault Number. Guidance on these faults can be found in the installation guide for this product, or on the ENlight Support Page on the Triton website. This page provides guidance on what to do next when a particular error message is displayed, as well as containing links to view and download the fitting books for this product.

## ENlight® Support

Scan the **QR code** below for access to ENlight® Product Support.



[tritonshowers.co.uk/enlightsupport](https://tritonshowers.co.uk/enlightsupport)

To register your new ENlight® shower, as well as see our latest service policy and contact details, visit [tritonshowers.co.uk](https://tritonshowers.co.uk) or call us on **02476 372 222**.

Visit [tritonshowers.co.uk/accessories](https://tritonshowers.co.uk/accessories) to find genuine Triton shower accessories.