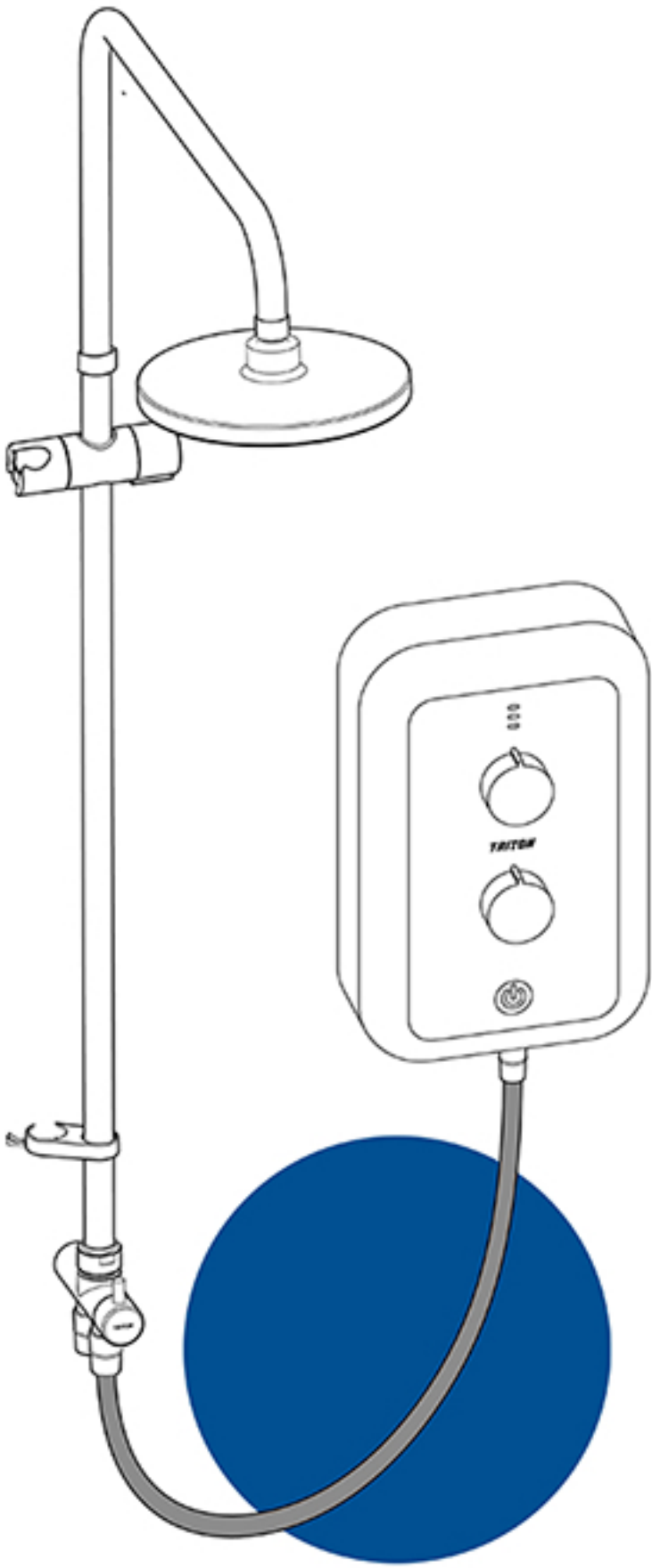


1



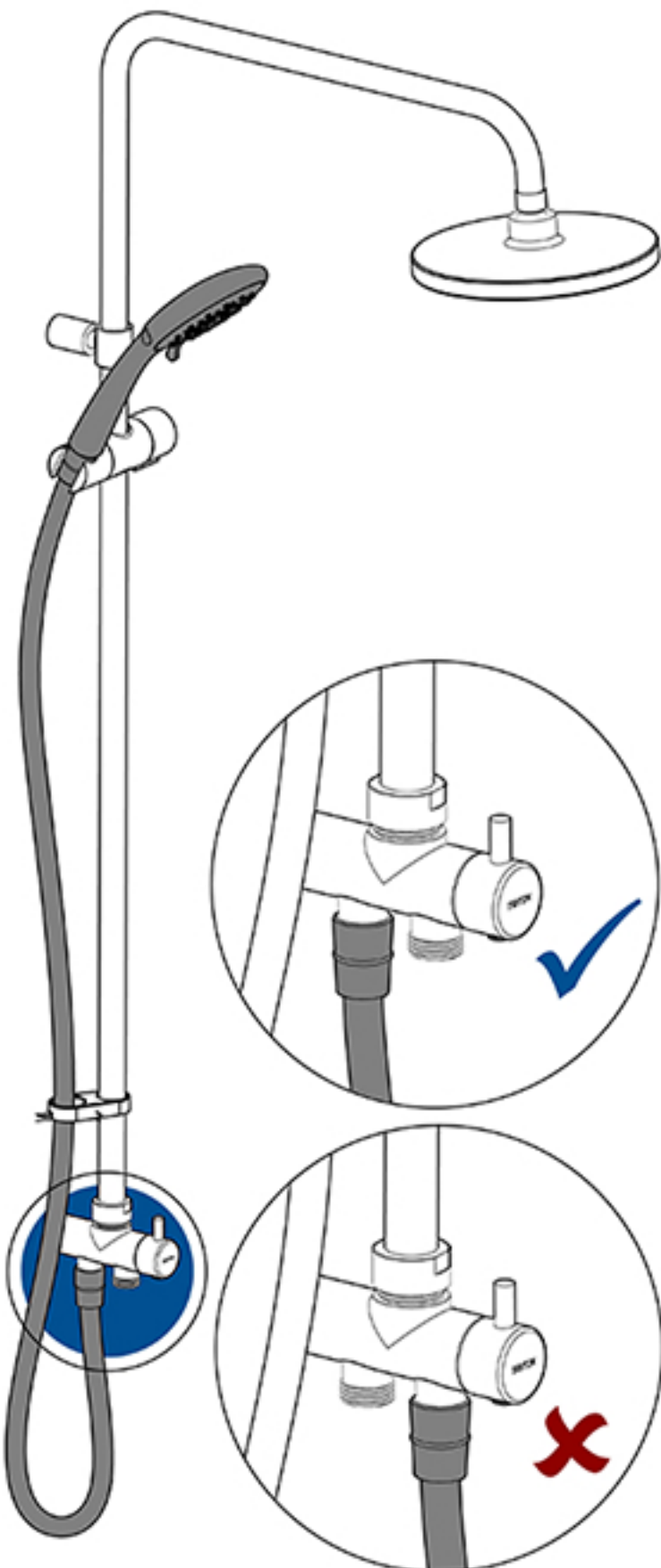
## Fitting Your DuElec® Kit Hose

Begin by uncoiling both hoses, check hose lengths and set aside the longer hose.

### Shorter Shower Hose

Insert a seal into each conical nut at either end of the hose. Connect one end of the hose to the shower unit and then connect the remaining end to the front threaded inlet port of the DuElec® Diverter.

2



### IMPORTANT

Ensure the Shower Head Hose is connected to the outlet (back) Diverter Valve connector, failure to do this may cause damage to your shower.

### Long Shower Hose

Feed hose through the hose retainer. Insert a seal into each conical nut at either end of the hose. Connect one end of the hose to the shower head and place in shower head holder. Then connect the remaining end to the rear threaded outlet port of the DuElec® Diverter.