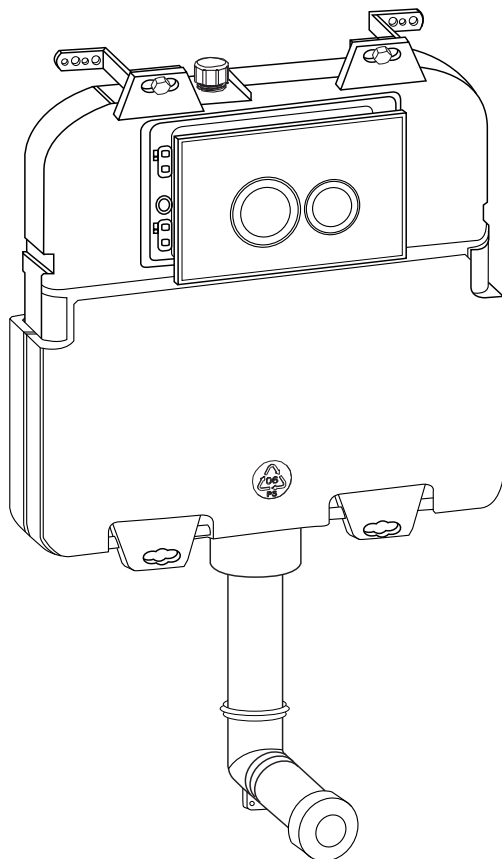


AREZZO

Compact Concealed Cistern



Fitting Instructions

Please follow them carefully and
leave this manual with end user

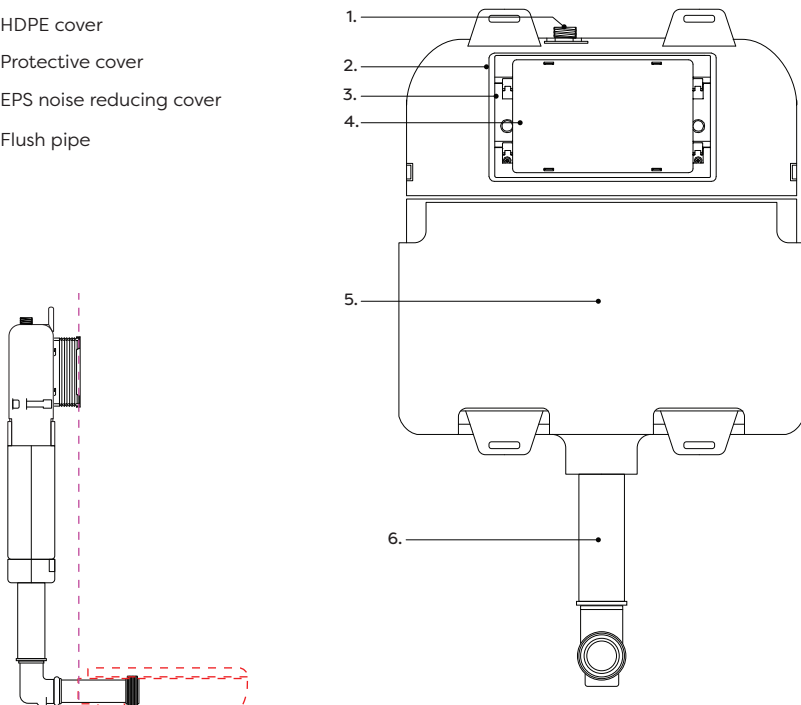
Before you begin:

1. **We recommend that this product is installed by a qualified tradesperson.** Victorian Plumbing Ltd. accept no liability for products incorrectly installed, or where the correct testing procedures have not been adhered to, thus resulting in the escape of water and consequential damage.
2. **Check the chosen wall space for any pipes/cables prior to drilling the wall.**
3. Ensure the incoming mains water supply is switched off prior to commencing the installation.
4. Observe all local plumbing and building codes & regulations.
5. Unpack the product then read these instructions before proceeding. Inspect the product for damage. If any damage is found, contact our Customer Relations team.

Parts:

Frame contents:

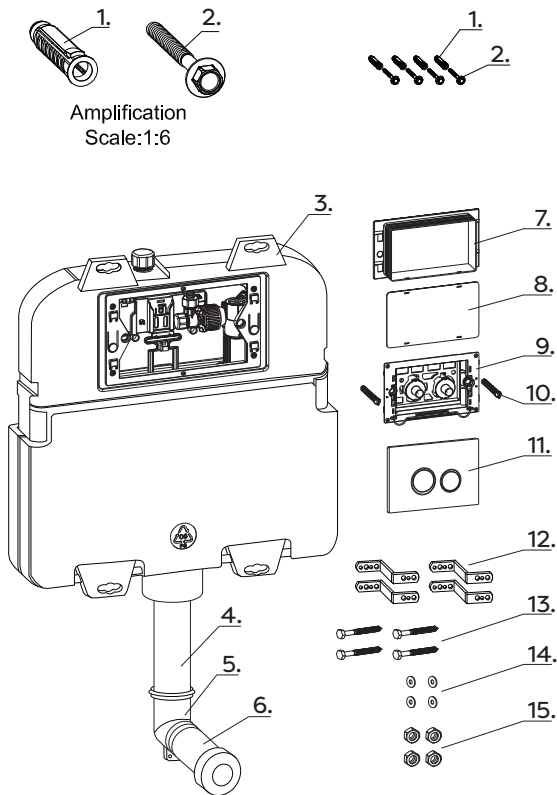
1. Brass angle valve
2. Fixing frame
3. HDPE cover
4. Protective cover
5. EPS noise reducing cover
6. Flush pipe



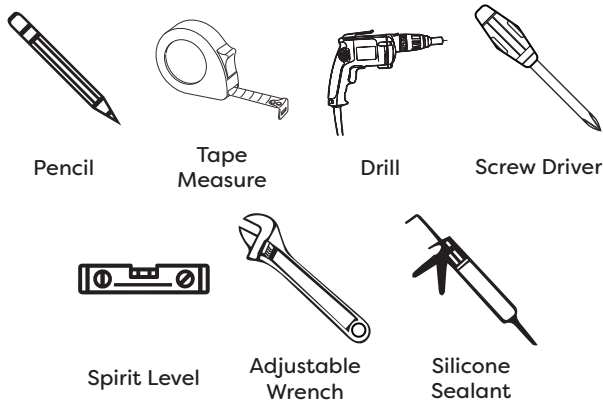
Diagrams are for illustration purposes only. Your cistern may superficially differ from these drawings however the installation guide steps still apply.

Fixing components:

1. Rawl Plugs (x4)
2. Screws (x4)
3. Tank (x1)
4. Flush connection pipe (x1)
5. Angled connector (x1)
6. Straight pan connector (x1)
7. Assemble frame (x1)
8. Tank protection cap (x1)
9. Control system (x1)
10. Flush plate bolts (x2)
11. Flush plate (optional) (x1)
12. Mounting bracket (x4)
13. Screw bolts (x4)
14. Washer (x4)
15. Hex Nut (x4)



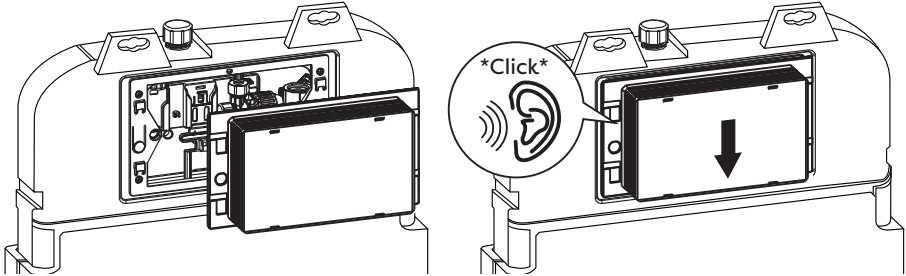
Tools required for installation (not supplied)



Installation

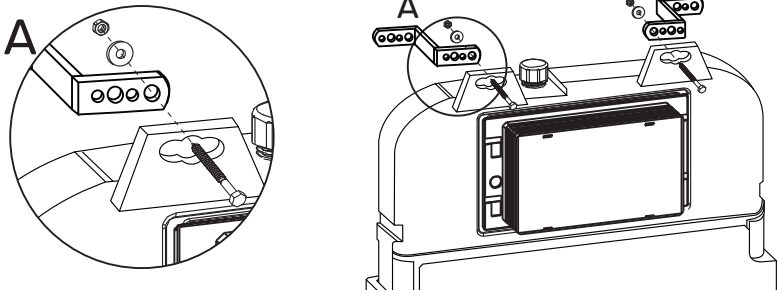
Step 1:

- Assemble the flush plate mounting frame to the tank in the correct position. To Assemble: push down the fixation frame, keeping the withhold button up. To Disassemble: press the raised round button down, and push the fixation frame up.



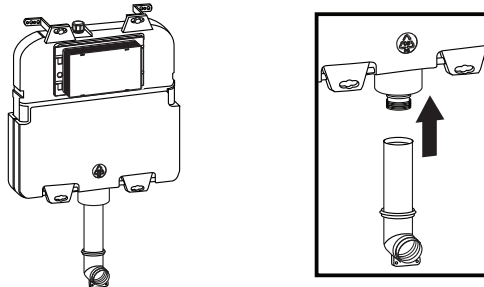
Step 2:

- Screw the angle fixing brackets, bolts (each 4pcs), hex nut and washer (each 4pcs) to the metal frame and secure.



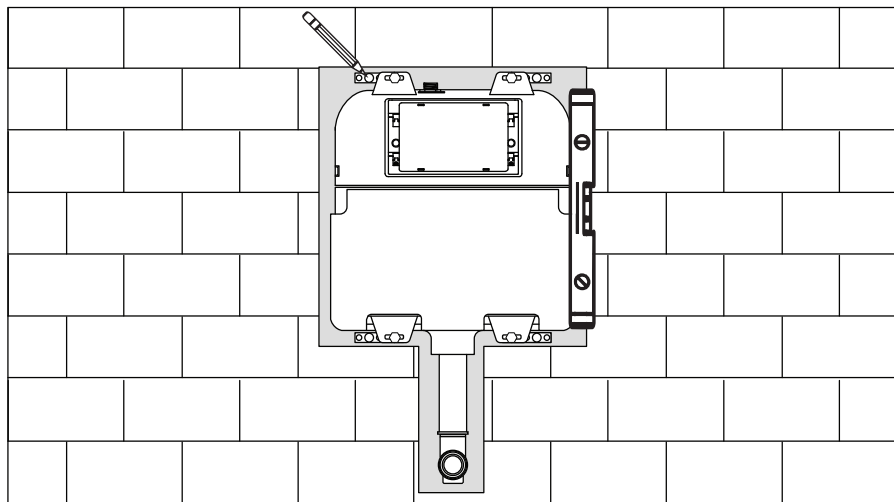
Step 3:

- Attach the flush connection pipe to the cistern.



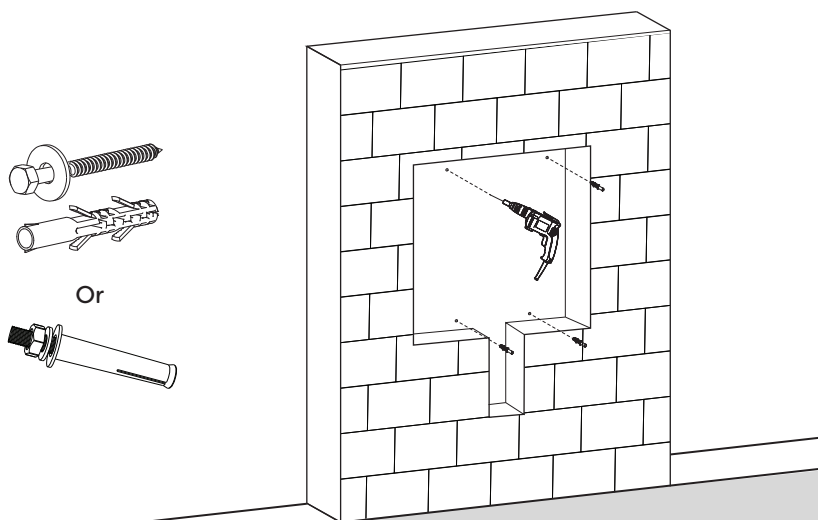
Step 4:

- Position the cistern within the wall/cabinet and mark the appropriate fixing points ready for drilling and screwing.



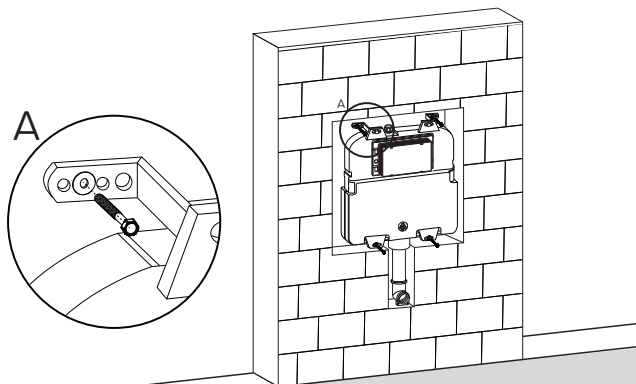
Step 5:

- Using an appropriately sized drill bit carefully drill the walls. Ensure that no pipes or cables can be damaged when drilling. Insert the rawl plugs into the pre-drilled holes.



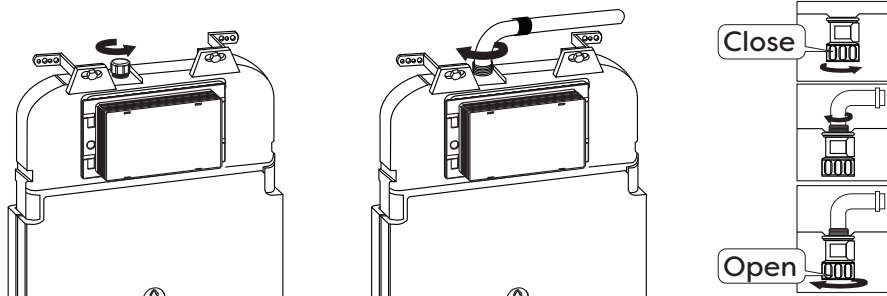
Step 6:

- Secure the frame kit to the cabinet using the supplied securing bolts and fixings.



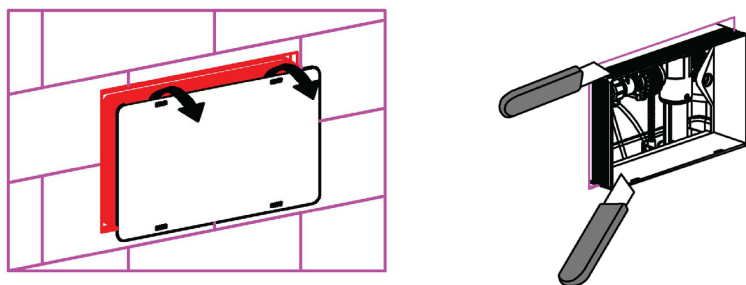
Step 7:

- Loosen the angle valve, connect the inlet pipe to the angle valve. Proceed to assemble the wall/cabinet.



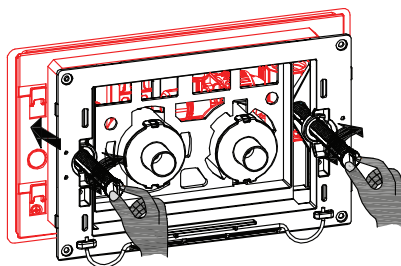
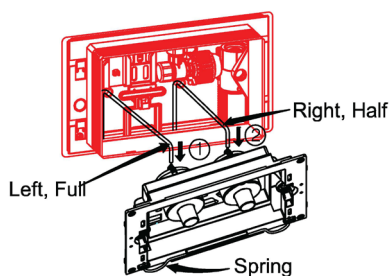
Step 8:

- After assembly, remove the protective cover. Using a bladed instrument, cut the plastic frame to finish flush to the completed wall surface.



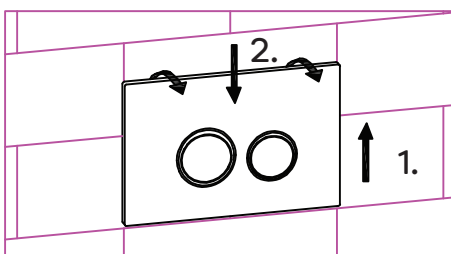
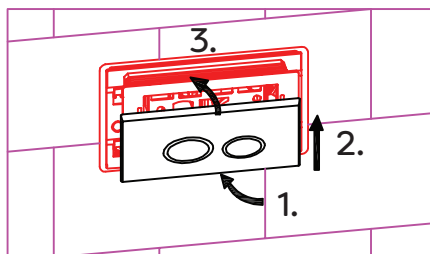
Step 9:

- Connect the vacuum pipes to the appropriate fixings marked Right and Left. Lift the spring clip to secure the flush plate into the frame, then secure the assembly using the bolts provided.



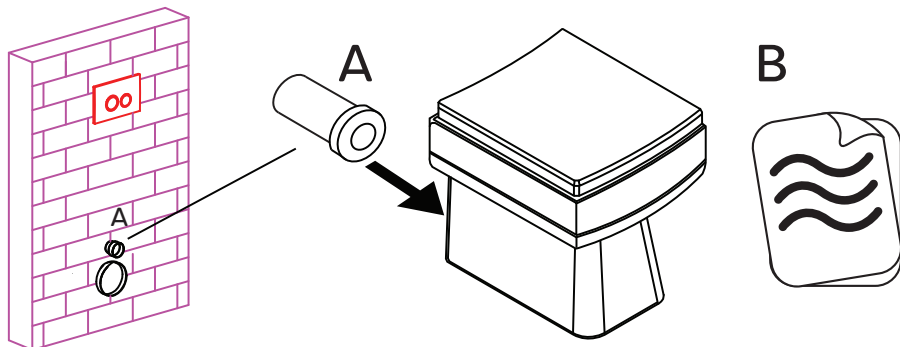
Step 10:

- Fit the flush control panel to the control system. To remove the plate, push the button plate upward, then pull the plate out.



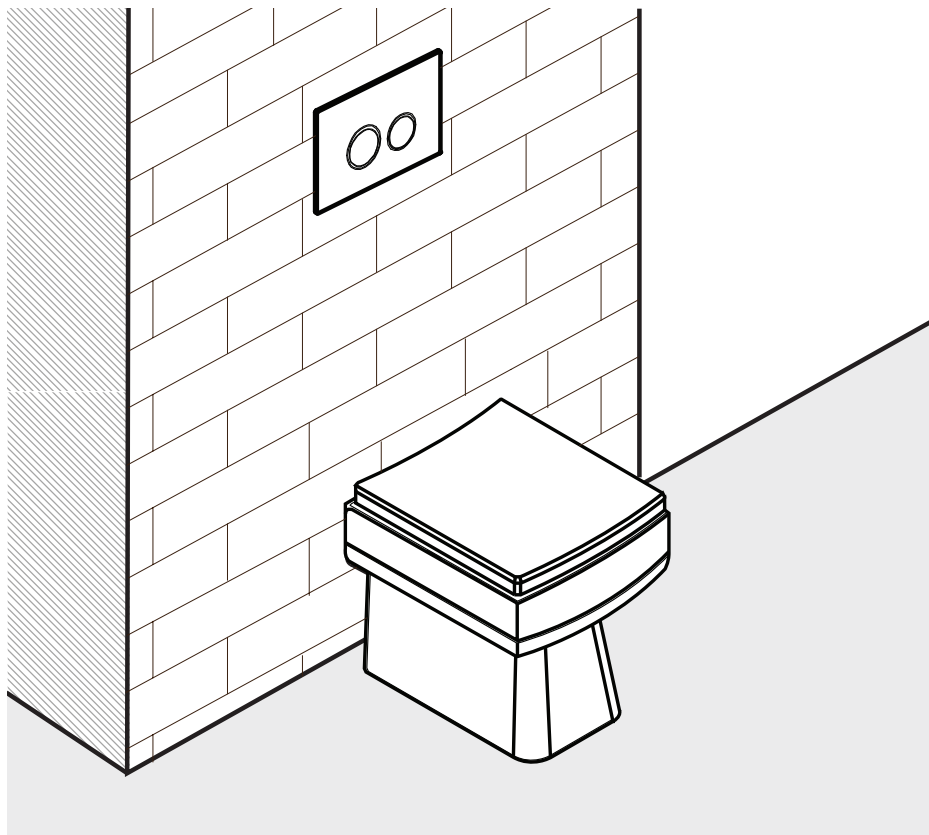
Step 11:

- Prepare the frame kit ready to accept the toilet pan. Refer to their respective installation instructions for guidance if needed.



Step 12:

- Once assembly is completed, turn on the water supply, check for leaks and check the flush operation.

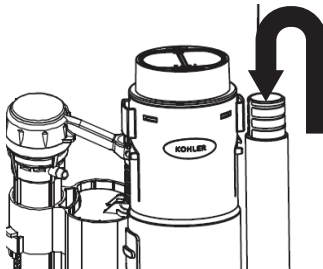


Troubleshooting

Please note: It is recommended to turn off the water supply via the stop valve before carrying out any internal maintenance.

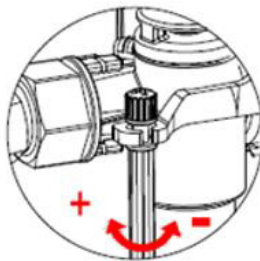
Water continues to run into the toilet pan:

- Remove the cistern tank lid and determine if the water level reaches the overflow pipe on the syphon; if it does, replace the inlet valve, if it doesn't then replace the upper section of the syphon.



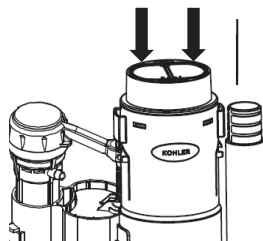
Insufficient or too much water entering the cistern tank:

- Adjust the inlet valve by turning the adjustment screw, until the desired level is reached.



No flush operation when the push button is pressed:

- Remove the cistern tank lid and press the two buttons on top of the syphon. If the cistern flushes 'normal', check that the rods have not been screwed into the push button too far (that they're not reaching the push buttons when pressed). replace the push button if necessary.



If the syphon does not flush when these buttons are pressed, replace the top section of the syphon.

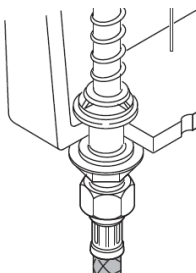
Maintenance

Please note: Turn off the water supply and flush the toilet to drain away the water in the tank, it is also recommended to have a bucket under the tank to catch the draining water.

All of the maintenance measures resulting from troubleshooting above requires you to access the internals of the cistern tank and for the water supply to be turned off. Depending on the toilet design you may need to remove the toilet pan from its location to access the inlet valve water supply and retaining nut.

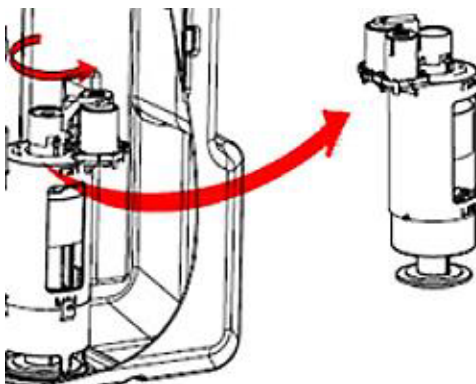
To replace the inlet valve:

- Disconnect the water supply from the inlet valve, then remove the inlet valve by unscrewing the nut on the underside of the cistern tank. Remove the cistern tank lid and pull the inlet valve from the tank. Once replaced, ensure all seals are re-fitted.



To replace the syphon:

- This should only require the top section to be replaced. Grab the syphon, turn it anti-clockwise and then lift. Upon replacing, ensure that the syphon clicks back into position and the flush buttons are aligned with the correct button on the syphon.



Cleaning

To maintain the surface finish of your product, wipe the toilet regularly using a clean damp cloth, a mild detergent mixture can be used. Do not use abrasive cleaning agents or materials which can strip and scratch the surface.

Notes:

