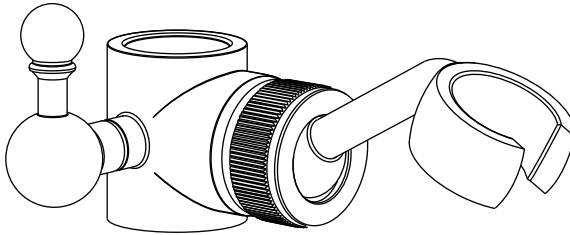


Traditional Adjustable Handset Slider

Before you Begin:

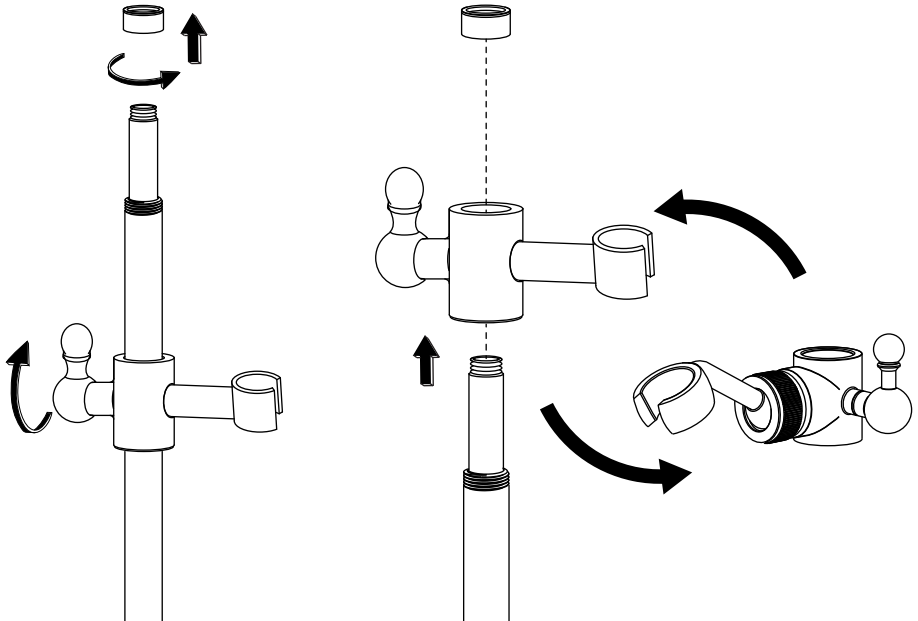
- This instruction shows how to fit the adjustable handset slider. Ensure the handset slider is the correct size for the slider rail.
- Unpack the product then read these instructions before proceeding. Inspect the product for damage. If any damage is found, contact our Customer Relations team.

Diagram:



Installation:

****Diagrams are for illustration purposes only. Your handset slider may superficially differ from this drawing however the installation guide steps still apply.****



Cleaning and Aftercare:

- Always clean the surface of the handset slider to keep it bright. **Attention:** please do not use inappropriate tools such as sharp brushes, rough sponges, scouring pads or corrosive detergent to clean the handset slider. Please clean the handset slider with a wet cloth and soapy water. Then rinse the soap out with clean water and dry with a soft cotton cloth.