

## K2H2O Water Filter with Carbon Wrap Cartridge

### Filter Cartridge Replacement Instructions

#### Contents

Replacement Filter containing Carbon and Phosphate

Replacement 'O'-rings for End Cap

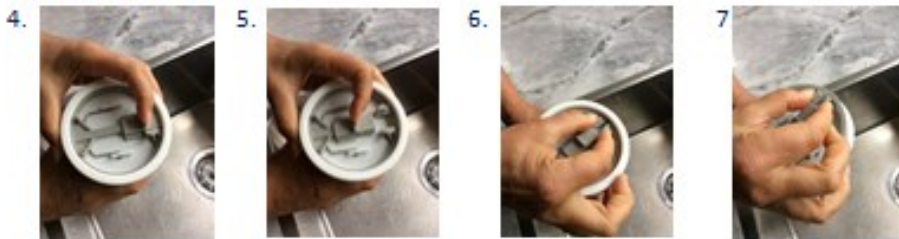
NB: use removal tool provided with installation kit

#### Instructions for Filter Replacement

- 1) Open cold tap on sink and turn off cold water at mains. Ensure the system is de-pressurised and isolated from the mains water (Pic. 1)
- 2) Place bowl under Filter Assembly to catch excess water. Remove Filter Assembly from Head by pushing up and turning anticlockwise until the Filter Assembly is ejected from the quarter turn head (Pic. 2,3)



- 3) Remove the Grey dip from the Assembly by sliding the locking tab back (picture 4,5) squeezing the open lugs (Pic. 6) and lifting out (Pic. 7).



- 4) Remove the End Cap using the supplied removal tool (Pic. 8)
- 5) Remove the used Filter from the Body by slotting the removal tool around the filter lug and pulling filter out (Pic 10,11). Rinse and clean Housing if required.



- 6) Locate new Filter into the Housing securely by rotating clockwise into the filter site in the Housing. Push firmly to "seat the filter", ensuring both 'O'-rings on the filter are engaged (Pic 12)
- 7) Replace 'O'-rings in end Cap (Pic 13). Ensure the 'O'-rings and cap grooves are CLEAN (no dust or other particles on any of the surfaces). Use the lubricant in the new 'O'-ring pack to enable an easy assembly.



## K2H2O Water Filter with Carbon Wrap Cartridge

### Filter Cartridge Replacement Instructions

- 8) Locate End Cap onto Filter Assembly so it is level (Pic.15). Do not try to push the End Cap in. Position Grey Clip against the End Cap, ensuring that open end is away from the wire handle (Pic 16)

12.



13.



- 9) Placing the Assembly on a hard flat surface, press down hard and square so that the Grey Clip and End Cap are forced into position (Pic 14). Slide locking tab on Grey Clip into place (pic 15,16)

14.



15.



16.



- 10) Fit Complete Assembly into the Head by pushing up and turning clockwise (Pic 17, 18)

17.



18.



- 11) Turn on water at mains and allow the system to fill before closing the tap on the sink  
12) Open the tap to flush system for 1 minute, then close tap for 30 seconds to allow the system to repressurise.  
Then run for a further 1 minute prior to use  
13) Close tap, let the system pressurise and check for leaks  
14) Used Filter can be returned to Supplier for recycling

#### Important Notes

- Only to be used with potable water systems
- Maximum pressure – 8.5 bar
- Temperature Range – 2°C - 35°C
- Change filter every 12 months or 3,000 litres, whichever comes first

All media is manufactured in accordance with NSF 42 Std.

