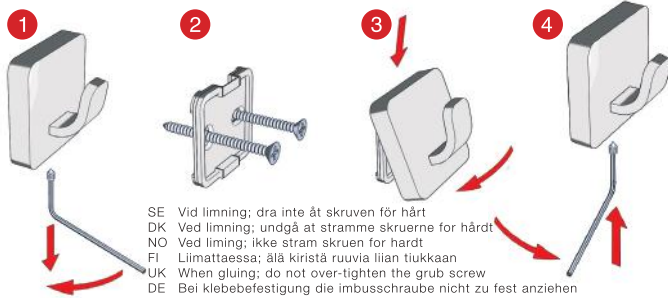


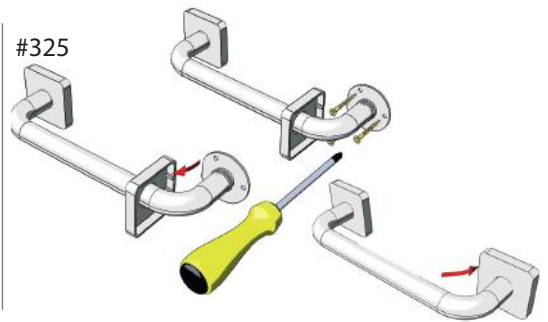
Monteringsanvisning
 Gebrauchsanleitung
 Fitting Instructions
 Asennusohje
 Instructions de montage
 Instrukcja obsługi
 Instrucciones de Montaje
 Инструкция по установке.



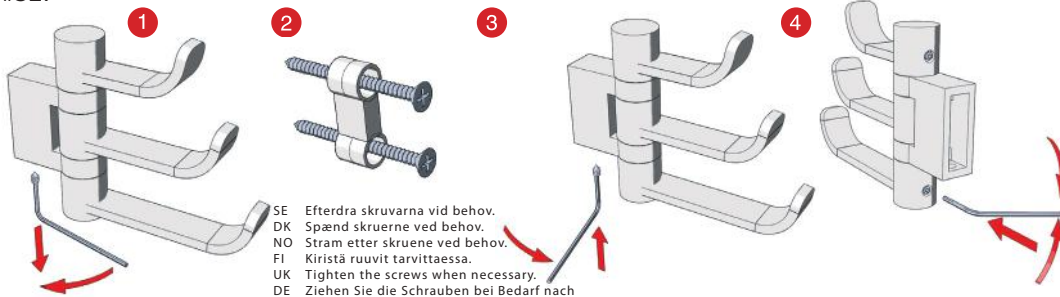
- #320 #343
- #323 #344
- #326 #3464
- #333 #355
- #341 #356
- #3414 #358
- #3411 #359
- #342 #369



SE Vid limning; dra inte åt skruven för hårt
 DK Ved limning; undgå at stramme skrueerne for hårdt
 NO Ved liming; ikke stram skruen for hårdt
 FI Liimattaessa; älä kiristä ruuvia liian tiukkaan
 UK When gluing; do not over-tighten the grub screw
 DE Bei Klebefestigung die Imbusschraube nicht zu fest anziehen



#327

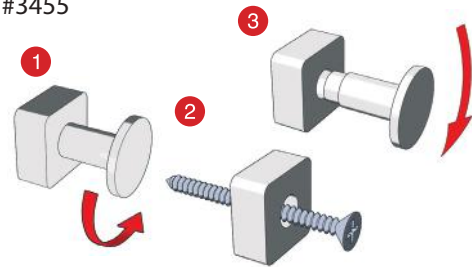


SE Efterdra skruvarna vid behov.
 DK Spænd skrueerne ved behov.
 NO Stram etter skruene ved behov.
 FI Kiristä ruuvit tarvittaessa.
 UK Tighten the screws when necessary.
 DE Ziehen Sie die Schrauben bei Bedarf nach

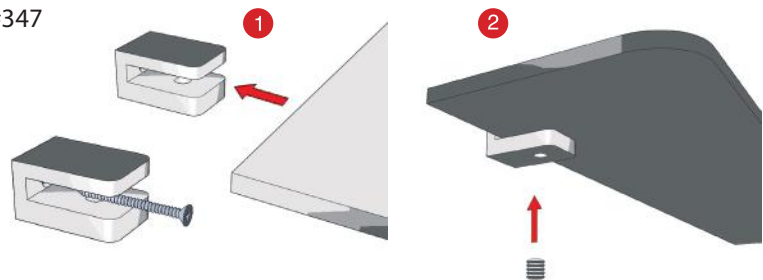
#374



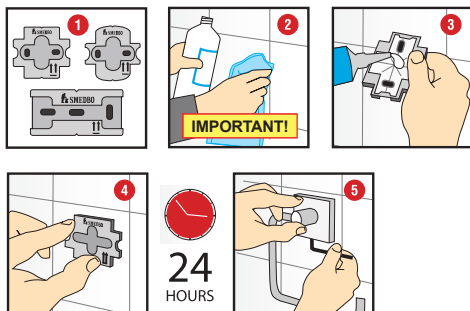
#3455



#347



#320, #323, #341, #3411, #3414, #342, #343, #344, #355, #356, #358, #359

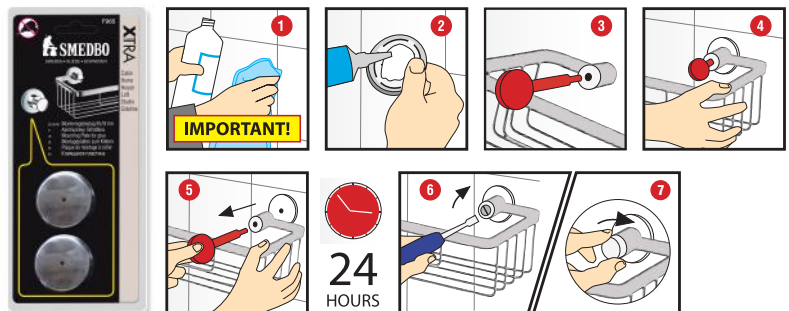


Montering med lim
 Assembly with glue
 Montage mit Kleben
 Assembly liimalla

Assemblée avec de la colle
 Montaż za pomocą kleju
 Montaje con pegamento
 установка с клеем

24 HOURS

F965 + #374



IMPORTANT!

IMPORTANT!

24 HOURS