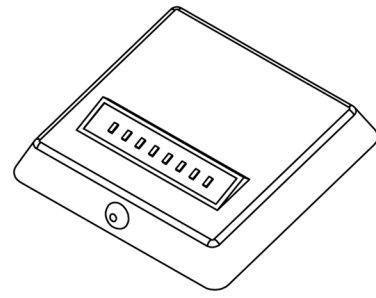


1 x LED TILTABLE RECHARGEABLE LITHIUM BATTERY WARDROBE LIGHT

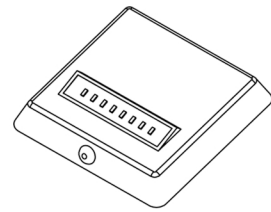


CODE: SE20230W0.1

INSTALLATION INSTRUCTIONS

IMPORTANT: Please read these instructions before commencing installation and retain for future reference.

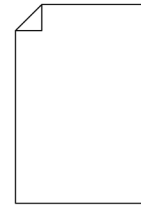
Components



1 x SE20230W0.1 Tiltable Wardrobe light



2 x Screws



1 x instructions

Tools required



Screw Driver

Important Safety Information

Please read these instructions carefully before attempting to install this product. It is advisable to keep these instructions in a safe place for future reference.

We recommend that you consult a qualified electrician. All electrical installation must be carried out in accordance with current IEE wiring regulations (BS7671).

These products must not be modified, if any modification are made, it may invalidate the warranty and may render the product unsafe. This LED light is Lithium ion battery powered.

Do not wire the individual LED light fittings to the mains. This product is only to be used indoors.

- If in doubt installation must be carried out by a qualified electrician.
- Install on smooth flat surface(s) only.
- Do not exceed or stretch the cable length of each LED wire.
- The wattage for this under bed light is 0.5W.
- Use the appropriate Sensio USB charger to charge the light.

Safety Instructions

1. This product is only suitable for connecting to the supplied battery pack.
2. The lights should be mounted onto a secure surface.
3. Suitable for furniture lighting.
4. When the lamp expires the fitting must be replaced.

Waste Electrical & Electronic Equipment (WEEE)

The symbol on the product, or on the document accompanying the product, the crossed out wheelle bin symbol, indicates that this product may not be treated as household waste. Instead it shall be handed over to the applicable collection point for the recycling of electrical and electronic waste.



RoHS
Compliant ✓ **CE**

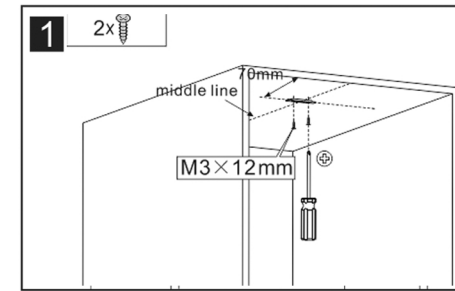
Sensio House, Unit 7, Speedwell Road, Whitwood, Castleford, West Yorkshire, WF10 5PY

www.sensio.co.uk

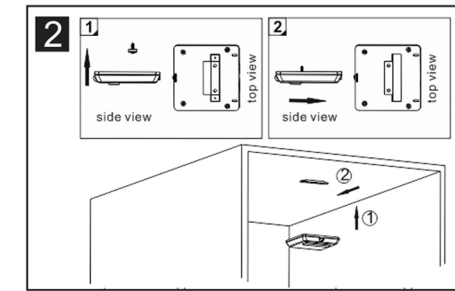
Technical drawings for illustration purposes only, Sensio had the right to change any information without prior notice. Make sure you check all hole cut outs before work commences.

1 x LED TILTABLE WARDROBE BATTERY LIGHT

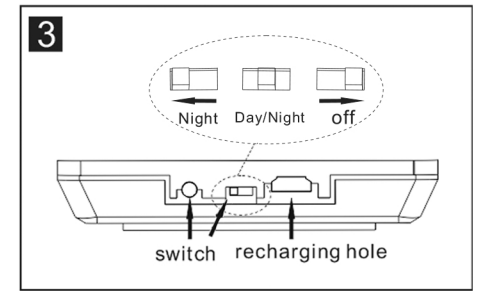
Installation



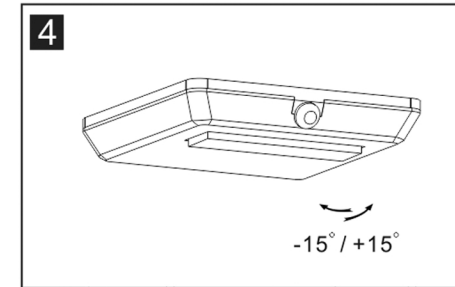
Install the bracket.



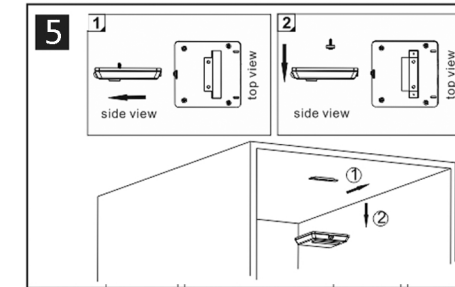
Slide the light onto bracket.



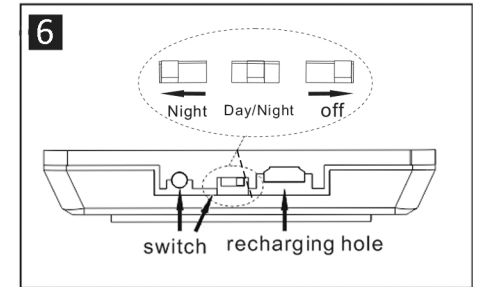
Turn on the switch.



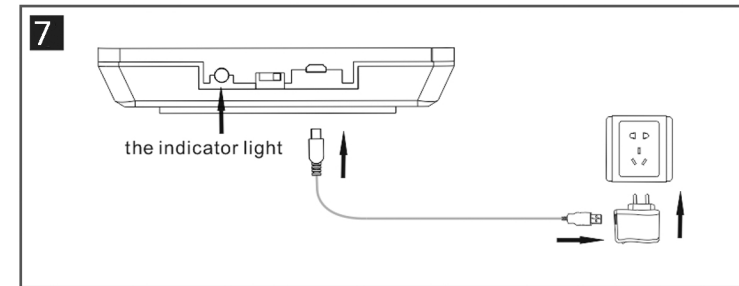
Alter the light to the desired positioning by carefully tilting the LED housing.



Recharging chart: Take down the light.



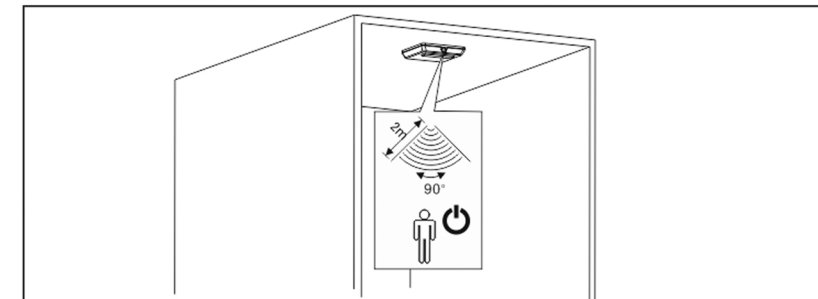
Turn off the switch.



Connect the USB cable to the charger and light. When charging, the indicator light, will be red; when finished charging, it will be green. Charging time: 3 hours, continuous working time: 7.5 hours.

Switch to **Day/Night** - the PIR sensor will work whatever the surrounding light level is
Switch to **Night** - the PIR sensor will only work when the surrounding light is dark
Switch to **Off** - will turn off all the functions

Operation



The LED Tiltable wardrobe light has a built-in PIR sensor. When the wardrobe door is opened this switch will detect motion from a distance of 2m and the light will switch on. Recharge the unit using the SE2007000 pluggable USB charger.

Maintenance & Care

- Ensure that the power is disconnected prior to cleaning.
- To keep the finish of this product, wipe over with soft cloth periodically.
- Do not use harsh chemical solvents, this may dis-colour or damage the finish.

Sensio House, Unit 7, Speedwell Road, Whitwood, Castleford, West Yorkshire, WF10 5PY
www.sensio.co.uk

Technical drawings for illustration purposes only, Sensio had the right to change any information without prior notice. Make sure you check all hole cut outs before work commences.