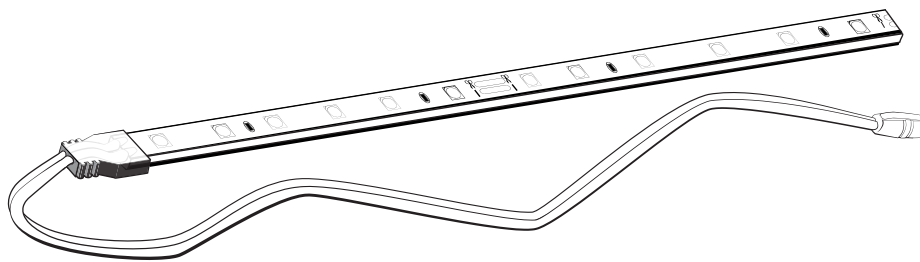


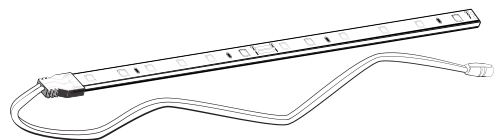
INSTALLATION INSTRUCTIONS



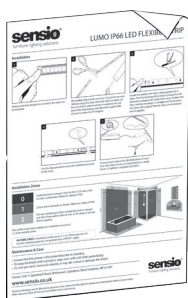
CODE: SE31015C0/W0, SE31025C0/W0

IMPORTANT: please read these instructions before commencing installation and retain for future reference.

Components

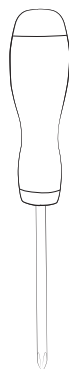


1x Flexible Strip



Fitting Instructions

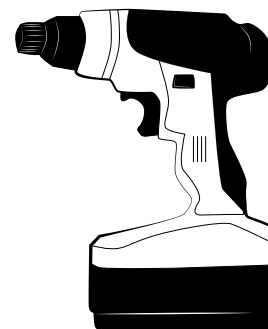
Tools Required



Screw Driver



9-11mm Drill Bit



Power Drill

Important safety information

Please read these instructions carefully before attempting to install this product. It is advisable to keep these instructions in a safe place for further reference.

We recommend that you consult a qualified electrician. All electrical installations must be carried out in accordance with current IEE wiring regulations (BS7671).

These products must not be modified, if any modifications are made it may invalidate the warranty and may render the product unsafe. These LED lights operate low voltage (24V).

Do not wire the individual LED light fittings directly to the mains.

- If in doubt installation must be carried out by a qualified electrician.
- Install on smooth flat surface(s) only.
- Do not exceed or stretch the cable attached to this fitting.
- This product is IP66 rated.
- The wattages are as follows:
1m = 2.5W
2m = 5W
- Use the SE40560 IP44 Driver with this product, sold separately. The maximum wattage of this driver is 15W. Do not exceed the maximum wattage.

Safety instructions

1. Before commencing installation or maintenance, isolate the main electrical supply for the appropriate circuit at the fuse board.
2. This product is only suitable for connecting to an appropriate driver.
3. Never Exceed the total output of the LED driver.
4. The lights should be mounted onto a secure surface.
5. Suitable for furniture lighting.
6. When the lamp expires the fitting must be replaced.

Waste Electrical & Electronic Equipment (WEEE)

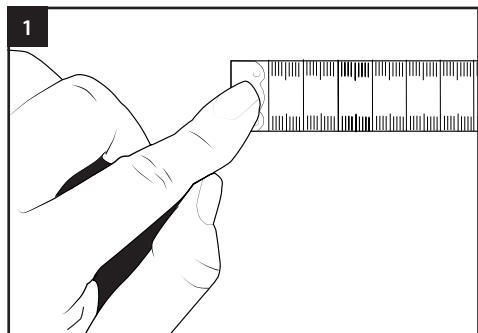
The symbol on the product, or on the document accompanying the product, the crossed out wheelie bin symbol, indicates that this product may not be treated as household waste. Instead it shall be handed over to the applicable collection point for the recycling of electrical and electronic waste.



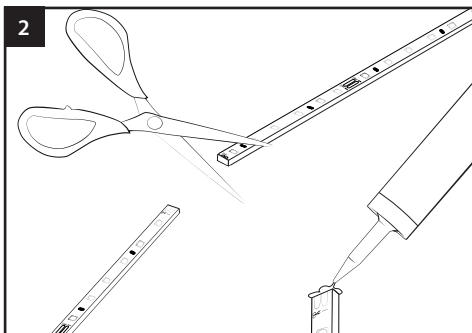
RoHS ✓
Compliant



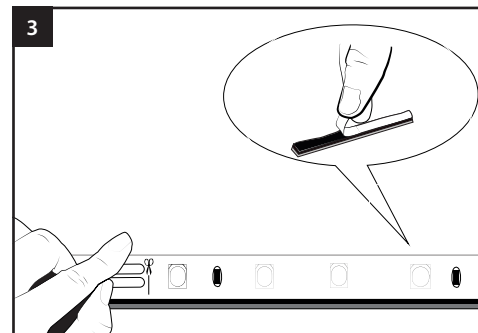
Installation



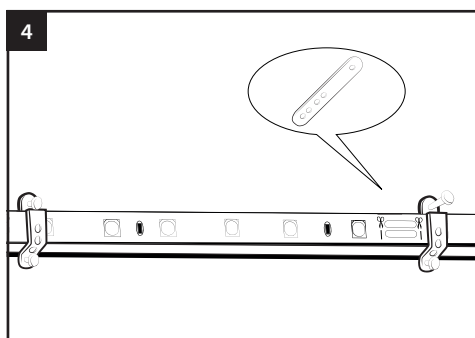
1 Measure the first straight run to which the strip is to be installed.



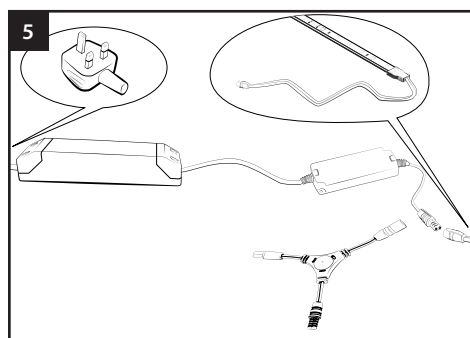
2 The flexible strip can be cut once. Cut points are very 100mm along the strip. Once the strip has been cut the cut section cannot be re-used and the cut end of the strip being used should be sealed with silicone to retain the IP integrity.



3 Ensure the surface the strip is being applied to is clean. Peel the backing off all strips to reveal the 3M adhesive coating on the back of the strip. Position the strip carefully ensuring it is straight and firmly press into place. We suggest that the strip is not removed and re-applied.

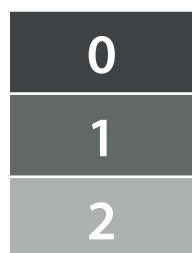


4 Use the clips provided to provide additional security to the strips.



5 Connect each strip to the SE40560 driver. If more than one strip is to be connected back to a single driver a Y-Splitter is required (SE10345).

Installation Zones



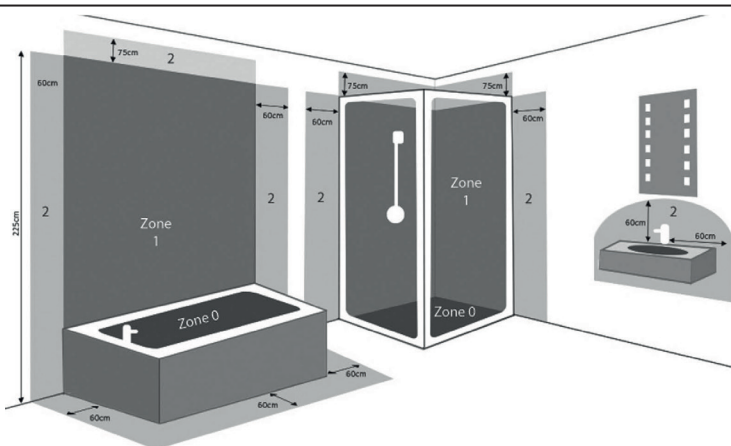
0 Inside the bath or shower. Must be SELV (12V max.) due to water submersion. Minimum rating of IP66.

1 225cm above the bath or shower. Minimum rating of IP44

2 The area stretching to 60cm outside the bath or shower and 60cm from water outlet of sink. An IP rating of at least IP44 is required.

This is IP66 rated and is suitable for installation in zones 0, 1, 2 & the outside zones.

OUTSIDE ZONES. Anywhere outside zones 0, 1 & 2. Where jets are not used for cleaning purposes, the general rules of BS7671 apply.



Maintenance & Care

- Ensure that the power is disconnected prior to cleaning.
- To keep the finish of this product, wipe over with soft cloth periodically.
- Do not use harsh chemical solvents, it may dis-colour or damage the finish.

Sensio, Unit 7, Speedwell Road, Whitwood, Castleford, West Yorkshire, WF10 5PY

www.sensio.co.uk