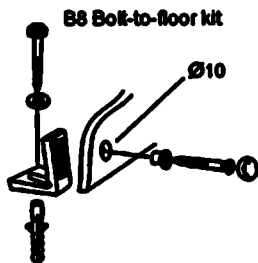
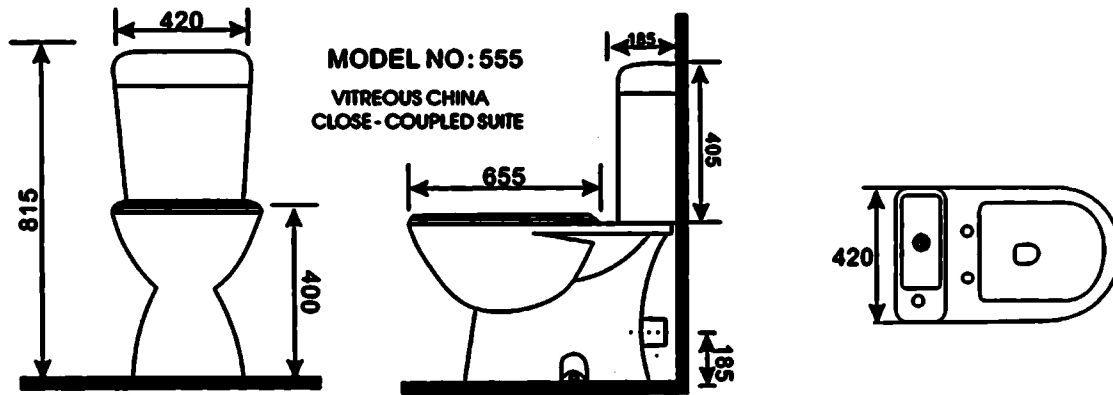


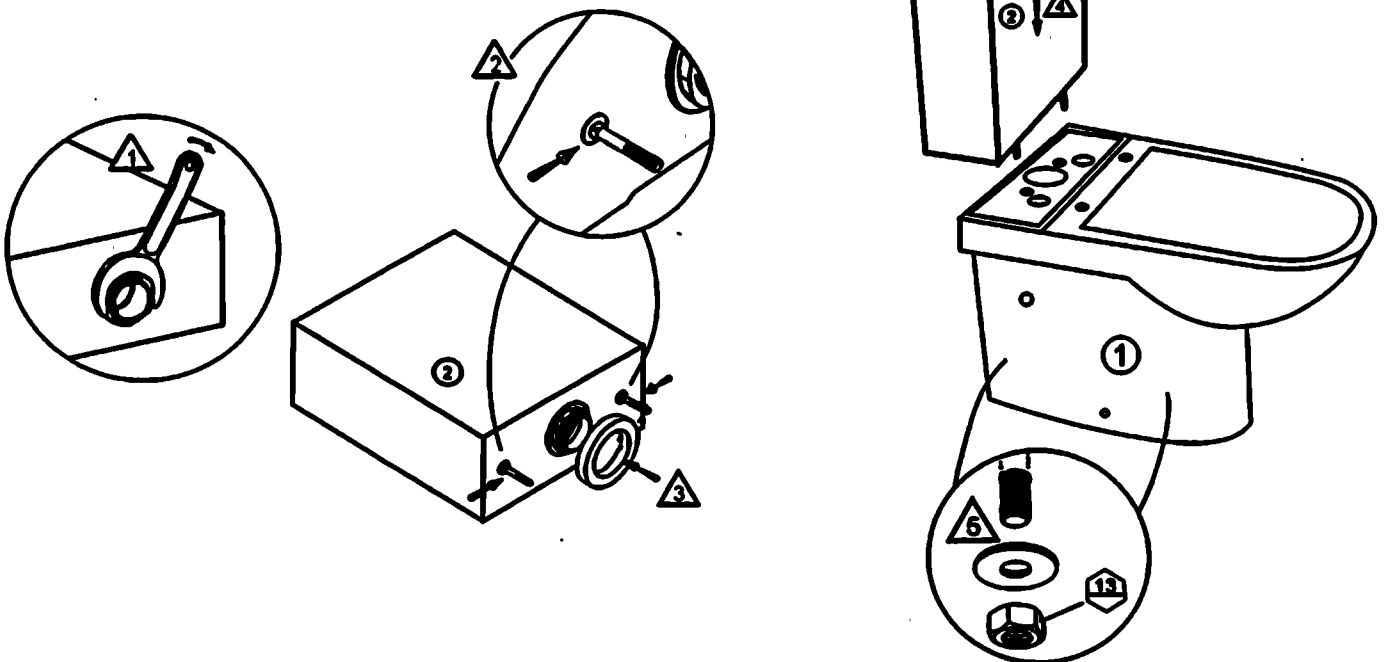
Wall-face Vitreous-china WC Suite 2555B



Notes:

Wall-outlet 180mm nominal height
Adjustable Set-out Uni-connector (150mm nominal set out off finished wall)
secondary horizontal off-set may be used if necessary

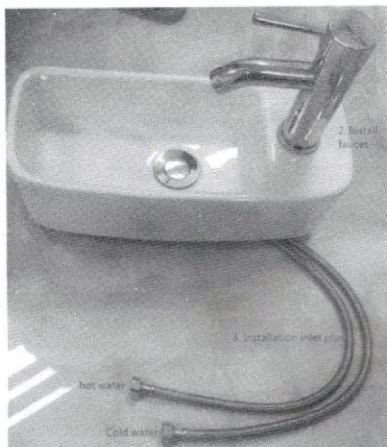
Attention: we do not recommend to install the toilet with concrete since it would make futur servicing more difficult.





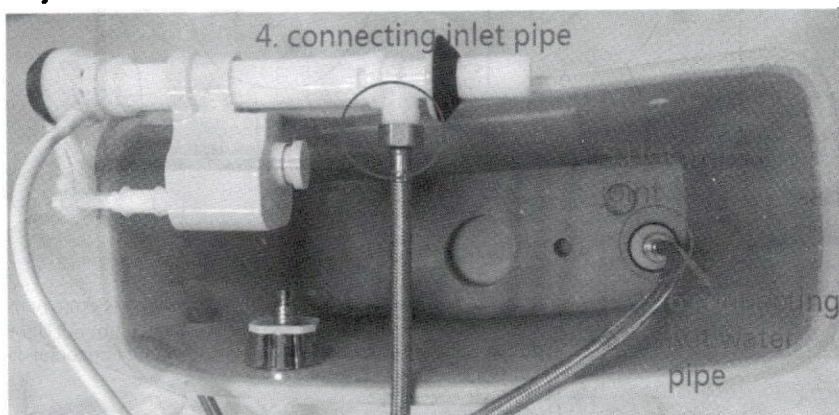
Inside like it

1. Installation Water tight rubber ring, hot water joint.



2. Installation the faucet

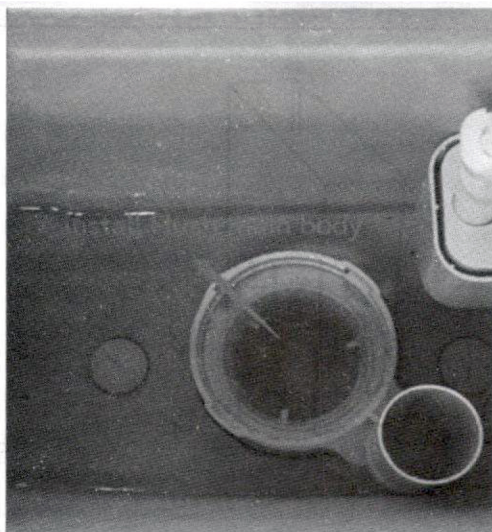
3. Installation inlet pipe.



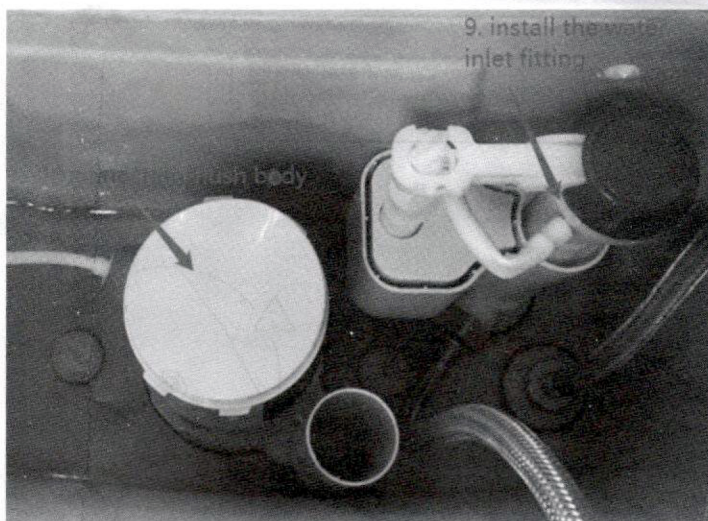
4. connecting inlet pipe

5. install hot water joint

6. connecting hot water pipe

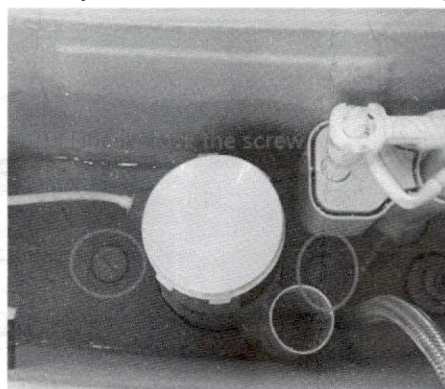


7. Install flush main body



8. Connecting flush body

9. install the water inlet fitting



10. Finally, lock the screws