

Solid Oak Top Fixing Toilet Seat Installation Instructions

Before you Begin:

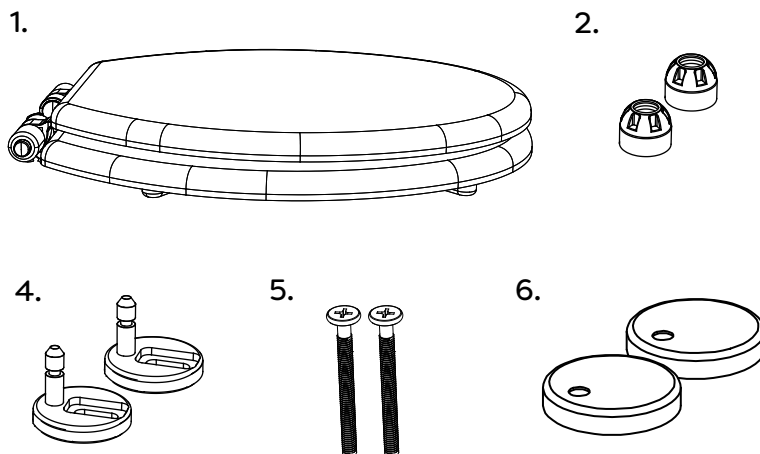
- This instruction shows how to fit the toilet seat. Ensure the toilet seat is the correct size in conjunction with your toilet pan.
- Unpack the product then read these instructions before proceeding. Inspect the product for damage. If any damage is found, contact our Customer Relations team.

①

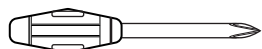
Make sure that all components are present prior to installation.

Fitting List:

1. Toilet Seat
2. Nuts (x2)
3. Toggle bolts (x2)
4. Hinge Plates (x2)
5. Screws (x2)
6. Cover Caps (x2)



Tools Required (Not Included):



Screw Driver

Note: Diagrams are for illustration purposes only. Your toilet seat may superficially differ from this drawing however the installation guide steps still apply.

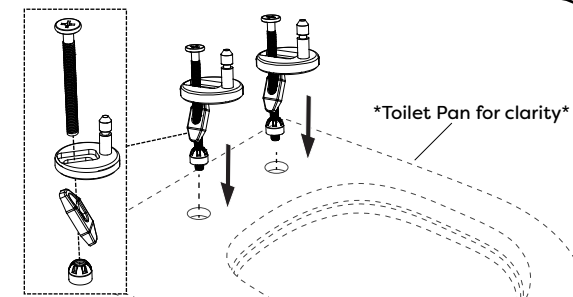
Cleaning and Aftercare:

- **Warning:** Do not use abrasives, scourers, bleach or any type of chemical cleaning solution containing bleach when cleaning the toilet seat. It is recommended to use warm soapy water and a clean damp cloth.
- If you use bleaches and strong cleaning solution in the pan. **DO NOT** leave the seat closed as the fumes from the bleachers and cleaners may damage the finish on the seat.
- **Tighten the bolts regularly:** Check the bolts that connect the seat to the toilet bowl every few months and tighten them if necessary.
- **Avoid Standing on the lid or toilet seat :** Standing on the seat can put unnecessary stress on the bolts and hinges and may damage the seat.

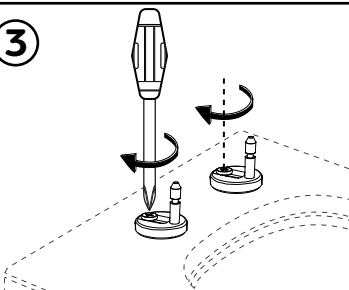
②

Insert the screws into the top holes of the hinge plates, then attach the toggle bolts and nuts to the bottom of the screw bolts on the underside of the hinge plates.

Apply a small amount of lubricant then insert the fittings into the mounting holes in the toilet bowl.



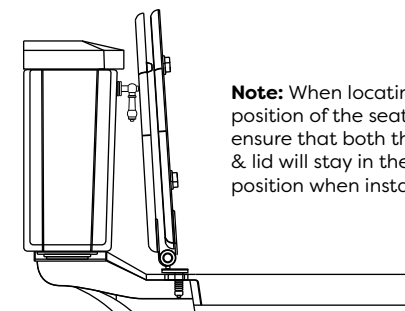
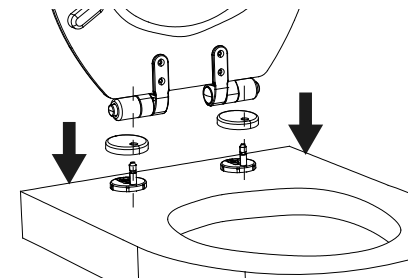
③



Using a screw driver, tighten the screws to secure the fittings to the toilet pan, be careful not to overtighten.

Note: Ensure the top pins of the hinge plates correctly line up with the hinge bar on the toilet seat.

Once the hinge plates is fixed into position; place the cover caps over the hinge pins, then mount the toilet seat. Adjust the toilet seat to fit the pan.

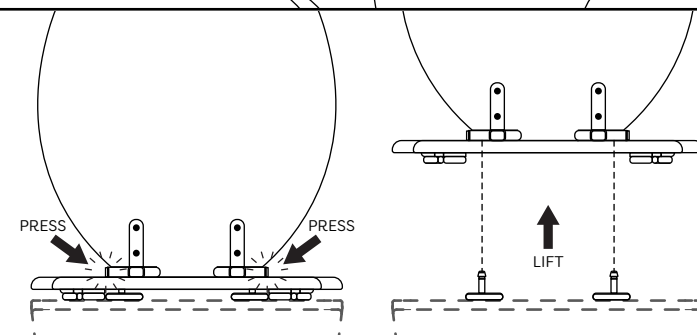


Note: When locating the position of the seat hinges, ensure that both the seat & lid will stay in the upright position when installed.

④

Without moving the hinge pins, remove the toilet seat by pressing the buttons and lifting the seat off the hinges. Tighten the screws fully to ensure a secure fit.

Remount the toilet seat to the hinge pins, ensuring the toilet seat fits the pan.



Recycling and Disposal:

- Please recycle the packaging in accordance with your local government regulations on waste handling and follow the same advice at the end of the products life.