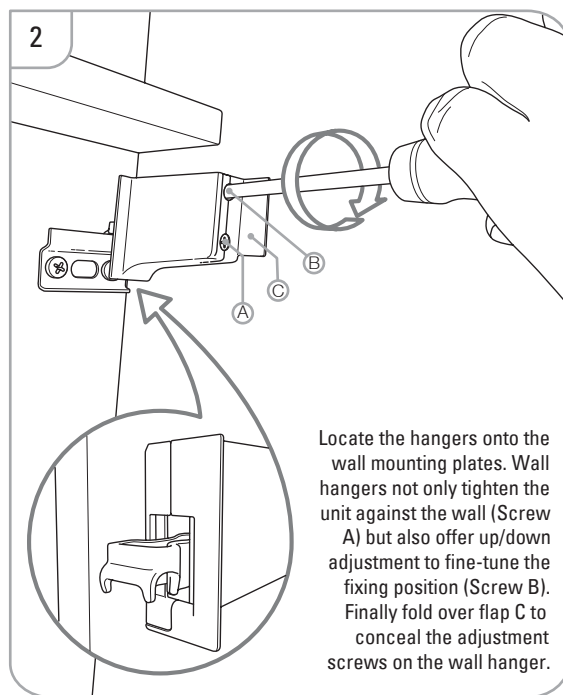
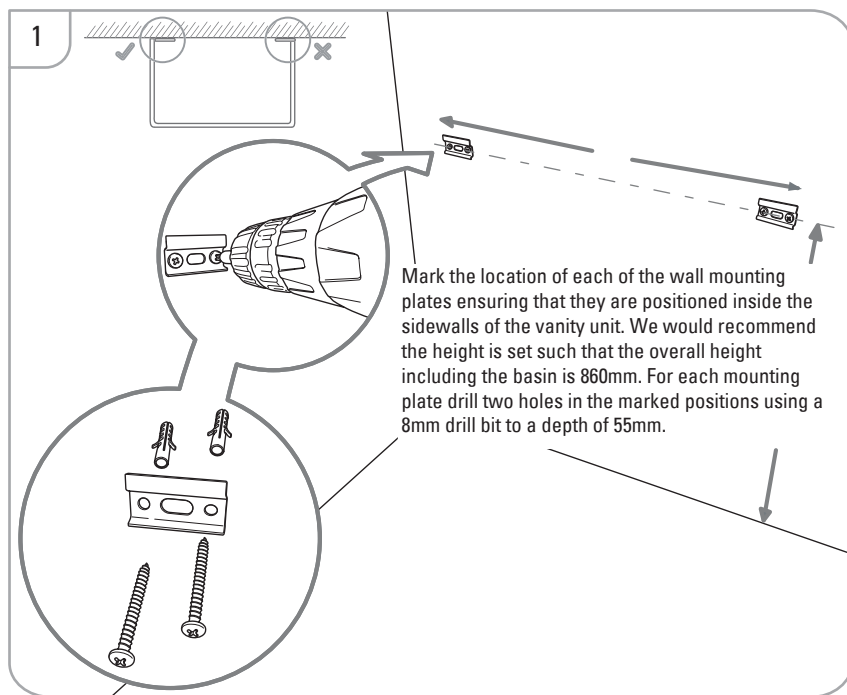


### Before You Start

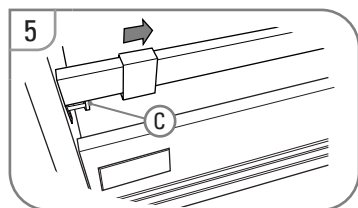
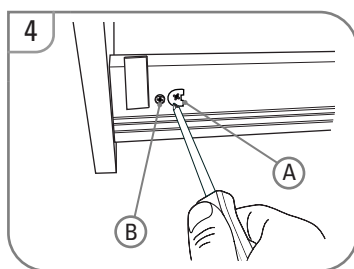
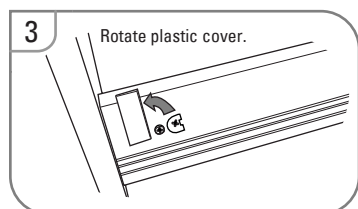
It is recommended that the unit and basin are secured to a suitably reinforced wall to ensure stability. The wall plugs supplied are only suitable for solid stone/brick walls. For plasterboard walls use specialist wall plugs along with supplementary wall strengthening as units can be very heavy. Seek advice from a specialist about the suitability of fixings to be used.

Wear suitable eye protection when drilling. Take care when using power tools near water - the use of a residual current device (RCD) is recommended. Beware of hidden pipes or cables. Take care when drilling tiled surfaces as the drill might slip. Use a piece of masking tape to prevent the drill from wandering.



### Fascia Adjustment

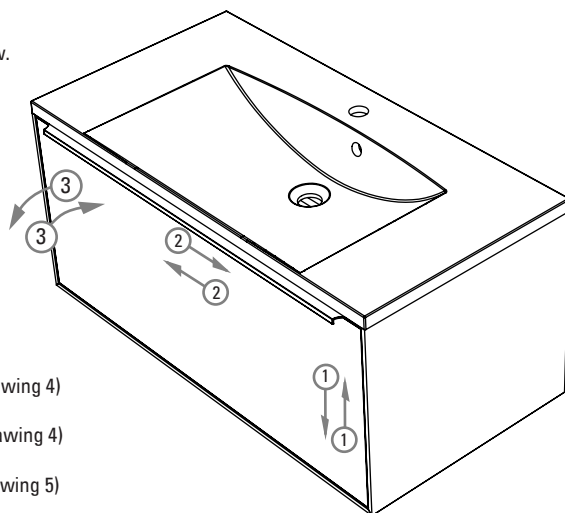
Fascias may require adjustment for correct alignment. If adjustment is required follow instructions below.



To make adjustment 1 (Up and Down) turn screw A (see drawing 4)

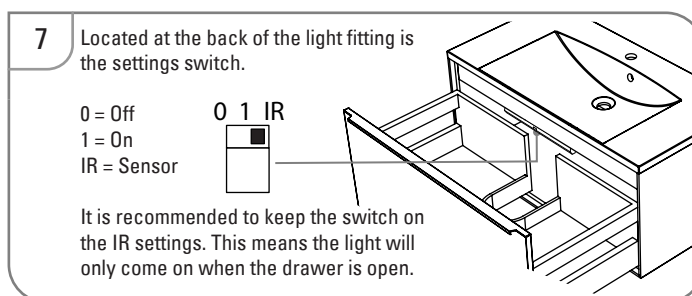
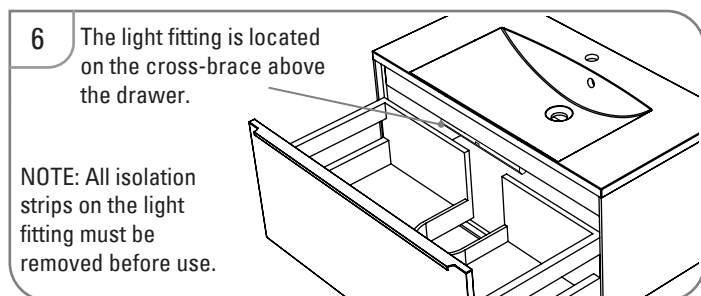
To make adjustment 2 (Left and Right) turn screw B (see drawing 4)

To make adjustment 3 (Tilt in and out) turn screw C (see drawing 5)



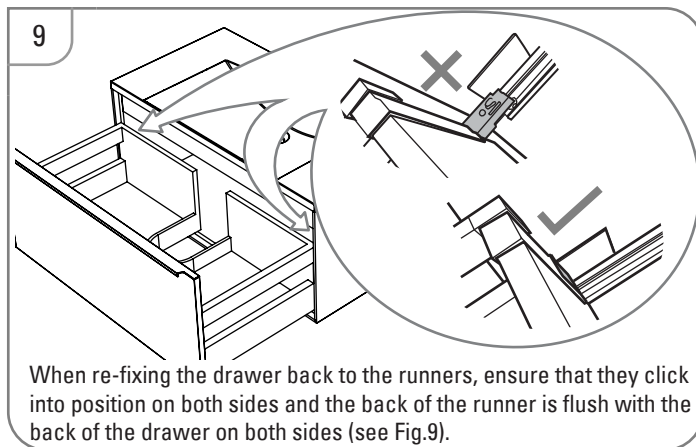
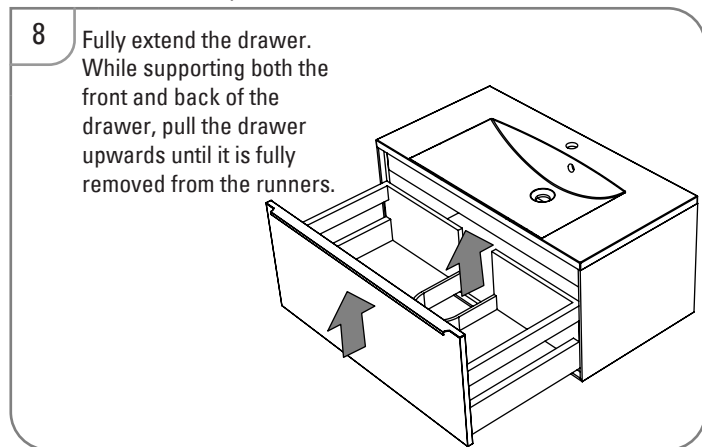
### Light Settings

This unit is fitted with lights within the drawer. To change the settings of the lights, please follow the instructions below:



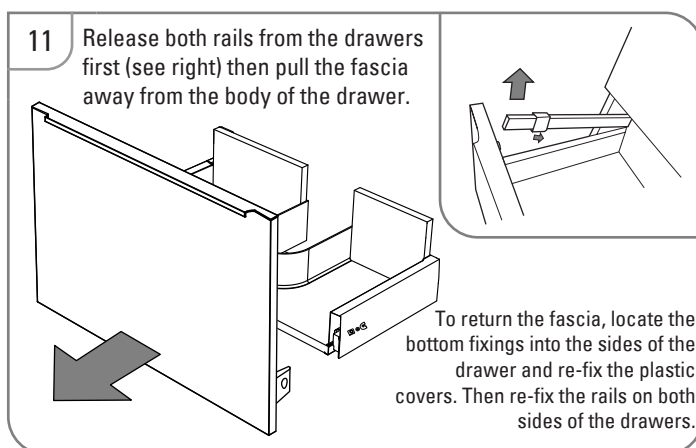
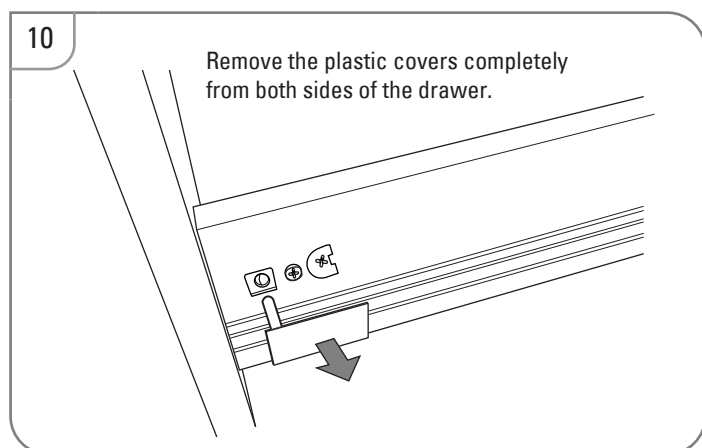
### Removing the Drawer

To remove the drawer, please follow the instructions below:



### Removing the Fascia

If it is faulty or damaged, the fascia can be removed and replaced. To remove the fascia please follow the instructions below:



### Furniture Aftercare Instructions

As with all wooden furniture, this product should be treated with care.

#### We recommend...

- Wipe away any water splashes or condensation after use. Excessive exposure to water will deteriorate the furniture.
- All bathrooms should be well ventilated with a suitable extractor fan.
- Clean with a soft damp cloth only.
- Use a wax free polish if one must be used.
- For removal of lime scale deposits use a suitable proprietary cleaner. If necessary test on an inconspicuous area first.

#### Please DO NOT...

- Do not scrub or scour
- Do not use abrasive cleaning agents

### Replacement Components

Should you require any replacement components for this product please contact Roper Rhodes using the contact details below.