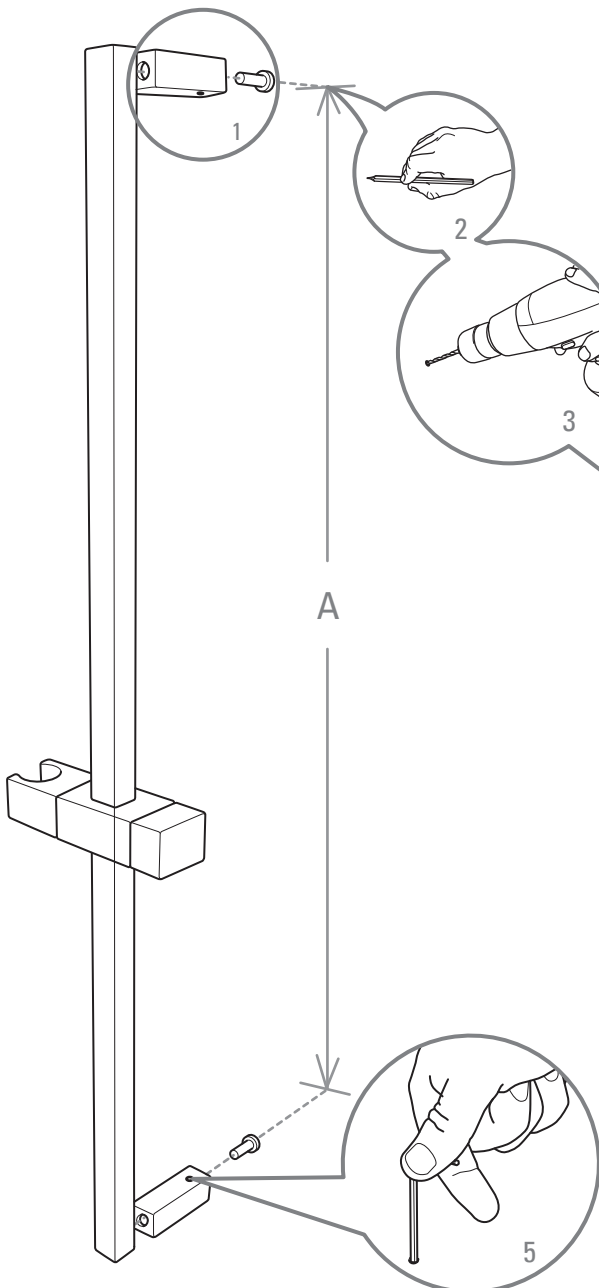


RISER RAIL (SVRAIL03)

Installation & aftercare instructions

Please retain for future reference



REMEMBER

Wear suitable eye protection when drilling. Take care when using power tools near water - the use of a residual current device (RCD) is advised.

Beware of hidden cables or pipes. When drilling tiled surfaces, a piece of masking tape applied to the wall before marking out the fixing holes will stop the drill wandering.

SPARE CODE: SP12561

1. Connect the Riser Rail Fixing Arms to the Rail using the bolts provided
2. Select the desired location for the Riser Rail, then measure & mark distance (A) on the wall where appropriate.
3. Drill the holes with a masonry drill bit of the appropriate diameter.
4. Secure the brass fixing bracket in place as shown above using the fixings supplied. Wall plugs provided are suitable for stone or brick walls. For other wall types use appropriate wall plugs. If in doubt consult an expert.
5. Attach the Riser Rail & tighten the two corresponding grub screws once fully in place as shown left.

SPARES: (Spare fixing Kit available)
CODE: SP12561