

HALO | Double Width Bottle Basket

This product should be fitted in accordance with the manufacturer's fitting instructions. Please read the following instructions carefully.

Care and Safety

Take care using power tools - The use of a residual current device (RCD) is recommended. Beware of hidden cables or pipes when drilling. Take care when drilling on glazed tile surfaces in case the drill slips.

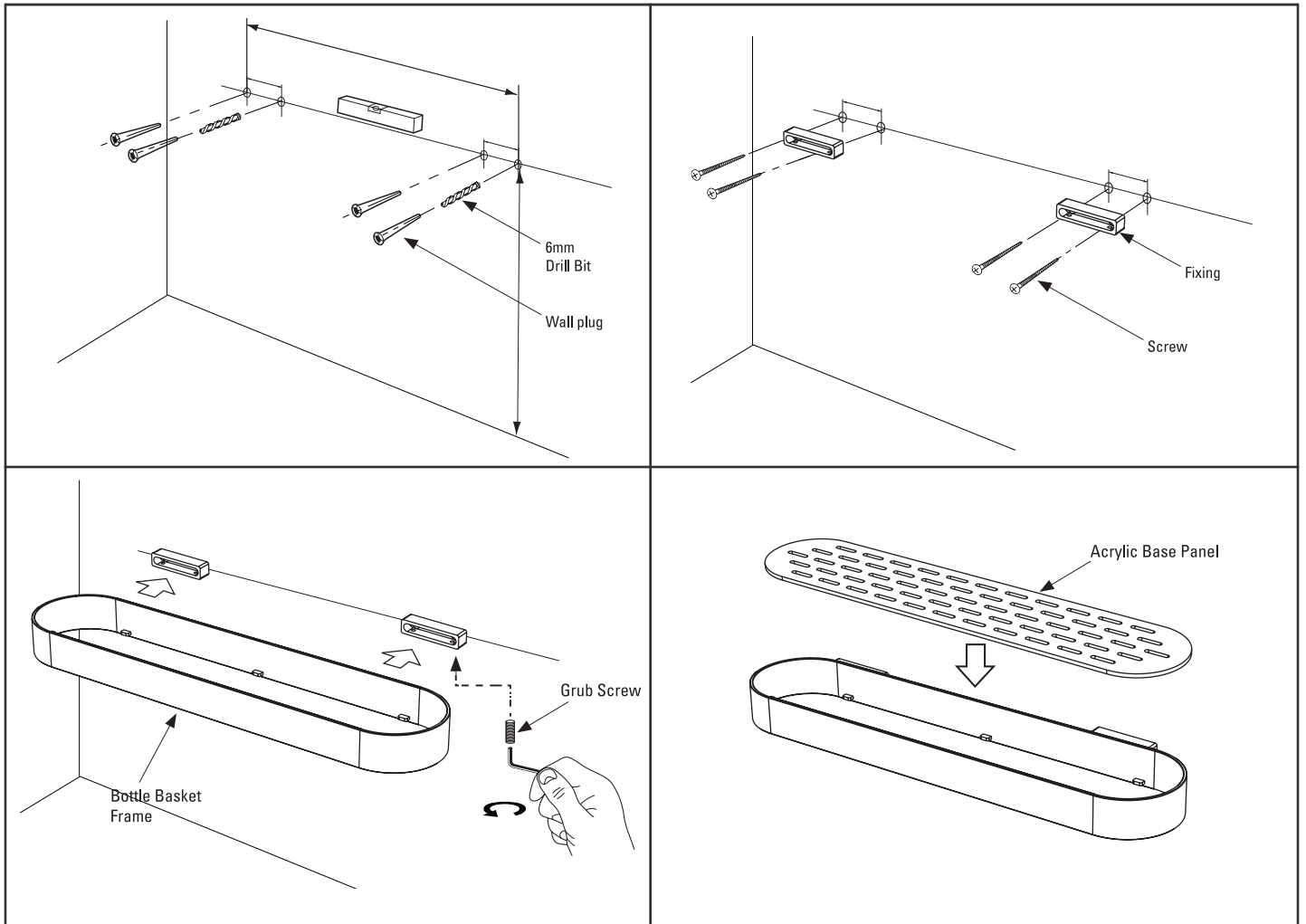
Fitting Instructions (See diagram and refer to description below)

- Note: Wall plugs supplied are only suitable for solid stone / brick walls. For plasterboard walls use specialist wall plugs
- Assemble the fixing brackets onto the basket frame (loosen grub screws on fixing brackets if necessary).
- Offer product up to the wall in the desired location. Then cover the area of the wall where the fixing brackets contact with masking tape. TIP - masking tape applied to the wall will help stop the drill wandering, particularly on tiled surfaces.
- Mark the outline of the fixing brackets onto the masking tape and then draw a centre line through each of the bracket positions using a spirit level.
- Remove the fixing brackets from the basket frame and offer them up to the wall lining up with the markings on the masking tape then mark the screw hole positions onto the level centre line.
- Drill each screw hole using a 6mm drill bit to a depth of 35mm and install suitable wall plugs.
- Screw the fixing brackets to the wall.
- Slot the basket into the fixing brackets and tighten the 4 grub screws on the underside of the fixing brackets.
- Slot the acrylic base panel in position (see diagram below). Ensure basket is secure and stable.

Cleaning

We recommend cleaning using a soft damp cloth only. Do not use metal cleaners or other abrasive cleaning agents.

Please retain this information leaflet for future reference.



Contents

- 1 x Double Width Bottle Basket Frame
- 1 x Acrylic Base Panel
- 2 x Fixing Bracket
- 4 x Wall Plugs (Suitable for Solid Stone / Brick Walls)
- 4 x Screws
- 1 x Allen Key



WARNING

Do Not lean or place excessive weight on the basket