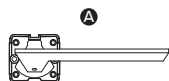


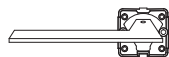
## Door Handle Installation Instructions

### Pack Contents:



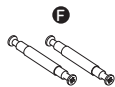
A. Inner Rosette With Lever Handle x 2

B. Rose Cover x 2



C. Spindle (100 x 8 x 8mm)

D. Hex Key



E. Self-tap Screw x 8

F. Long Connecting Screw X 2

Please keep these instructions for further reference

### Tools Required:

Screwdriver with driver bit type PH2



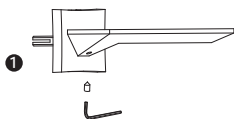
⊕ PH2

### Health And Safety:

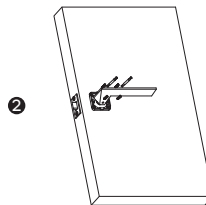
When using the product, basic safety precautions should always be followed to reduce the risk of injury including the following:

- This product must be installed by a competent adult.
- The provided screws are designed for mounting the product on wooden doors.
- Ensure children and pets are kept at a safe distance during installation.

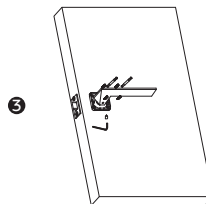
### Assembly And Use:



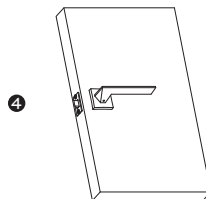
Insert the spindle into one of the levers and tighten the grub screw firmly. Make sure that there is enough of the spindle protruding to pass through the door and be secured in the other lever.



Insert the spindle through the center hole of the door. Tighten the long connecting screws, self-tap screws with a screwdriver.



Place the opposing lever on the opposite side of the door and tighten the long connecting screws, self-tap screws and grub screws.



Firmly press the rose covers onto the inner plates to fasten them together.

### Care And Cleaning:

To ensure a longer-lasting finish for your handles, please adhere to the following requirements:

- Avoid using cleaners or acidic chemicals to polish or clean the product to prevent oxidation.
- Refrain from scrubbing handles with heavy or sharp-edged objects.
- Regularly check the components to ensure all screws are tightened securely.

For more information visit: [www.victorianplumbing.co.uk](http://www.victorianplumbing.co.uk)