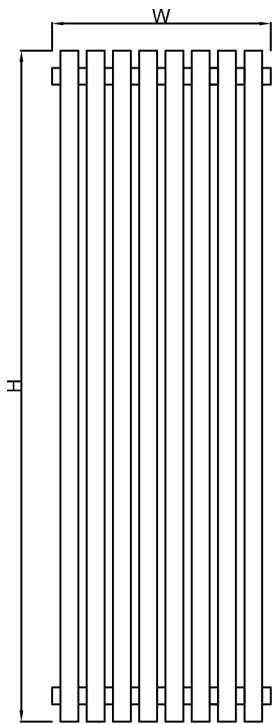
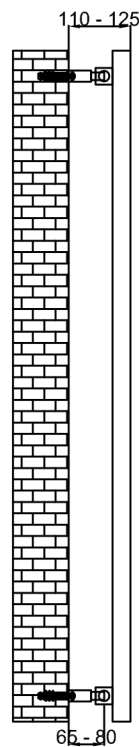


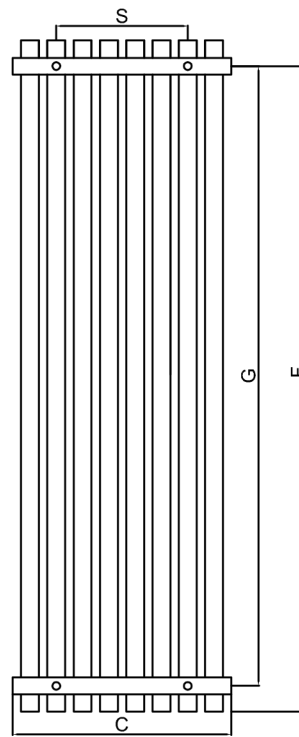
ORTHIA - 1800



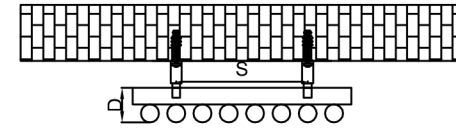
Front View



Side View



Back View



Top View

SUPPLIED INSTALLATION ACCESSORIES



SCREW 4 PCS



WALL PLUG 4 PCS



BRACKET 4 PCS



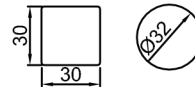
GRAB SCREW 4 PCS



ALIEN KEY 1 PCS

-Vertical Mounting
-Optional 304 QUALITY STAINLESS STEEL TOWEL RADIATOR: (RNS-ORT3918 : ORTHIA RADIATORS)
-POLISHED / BRUSHED
-Max Operational Pressure: 10 Bar
-Inlet/Outlet: 1/2" Female Pipe Thread
-All Dimensions are in mm

MATERIAL DETAILS



Product Name	Product Code	Height	Width	Thickness	Plumbing Axes Center to Center	Hanger Axes Horizontal	Hanger to Bottom of the Product	Hanger Axes Vertical	Water Volume	Empty Weight	Thermal Output
		H	W	D	C	S	F	G	-	-	Watt - BTU/hr (Δ50°)
		mm	mm	mm	mm	mm	mm	mm	L	kg	
ORTHIA 1800 X 297	RNS-ORT2918	1800	297	62	297	141	1754	1708	8.07	9.23	945 - 3224
ORTHIA 1800 X 391	RNS-ORT3918	1800	391	62	391	235	1754	1708	10.75	12.28	1261 - 4299

REINA