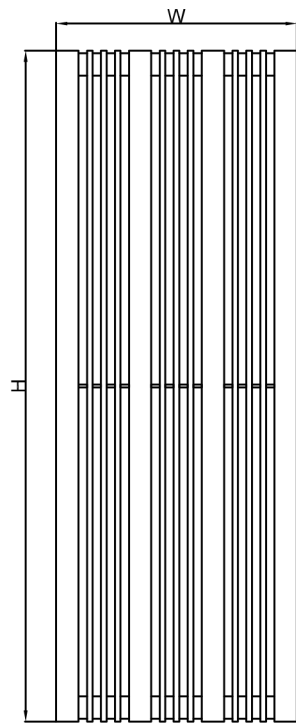
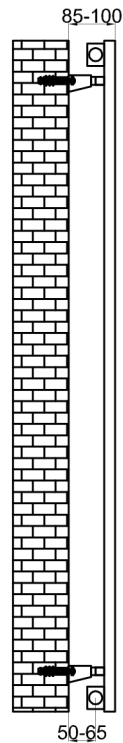


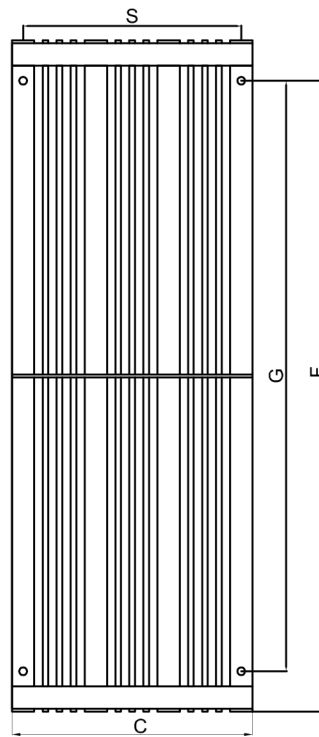
KARIA - 1800



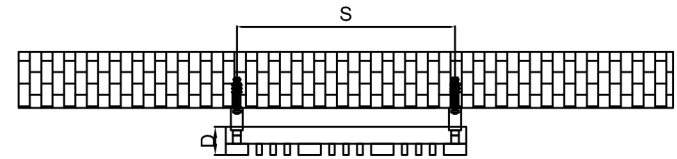
Front View



Side View



Back View



Top View

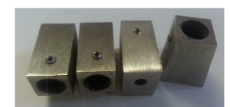
SUPPLIED INSTALLATION ACCESSORIES



SCREW 4 PCS



WALL PLUG 4 PCS



BRACKET 4 PCS



GRAB SCREW 4 PCS



ALIEN KEY 1 PCS



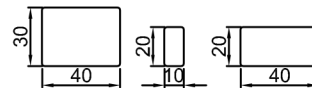
AIR VENT 1 PCS



BLANKING PLUG 1 PCS

-Vertical Mounting
-Optional 304 QUALITY STAINLESS STEEL RADIATOR: (RNS-KR4318 : KARIA RADIATORS)
-BRUSHED
-Max Operational Pressure: 10 Bar
-Inlet/Outlet: 1/2" Female Pipe Thread
-All Dimensions are in mm

MATERIAL DETAILS



Product Name	Product Code	Height	Width	Thickness	Plumbing Axes Center to Center	Hanger Axes Horizontal	Hanger to Bottom of the Product	Hanger Axes Vertical	Water Volume	Empty Weight	Thermal Output
		H	W	D	C	S	F	G	-	-	Watt - BTU/hr (Δ50°)
		mm	mm	mm	mm	mm	mm	mm	L	kg	
KARIA 1800 X 300	RNS-KR3018	1800	300	50	300	260	1728	1656	5.28	12.66	1106 - 3771
KARIA 1800 X 430	RNS-KR4318	1800	430	50	430	390	1728	1656	7.31	17.93	1387 - 4730

