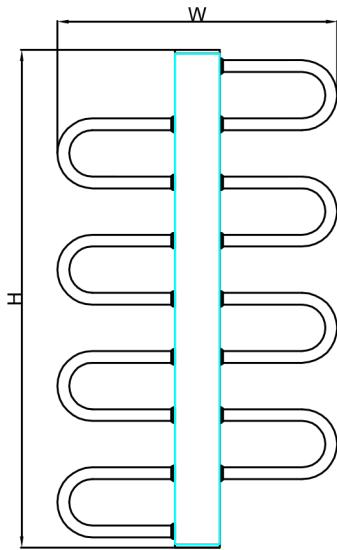
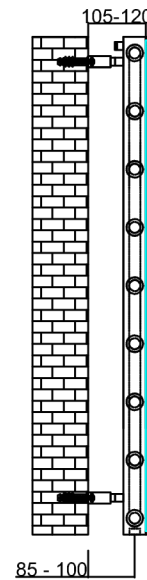


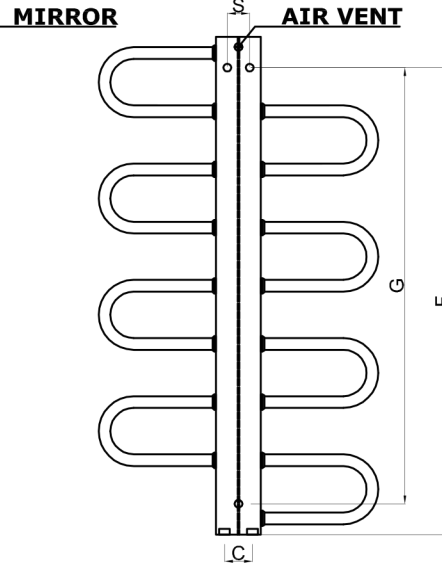
DYNAMIC 500



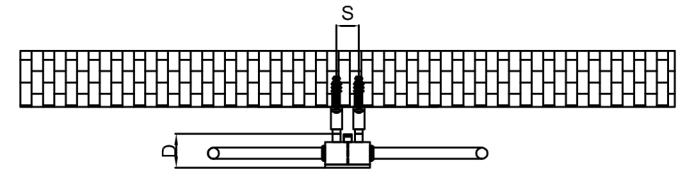
Front View



Side View



Back View



Top View

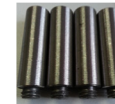
SUPPLIED INSTALLATION ACCESSORIES



SCREW 2 PCS FOR DYNAMIC 475X500
SCREW 3 PCS FOR DYNAMIC 890X500
SCREW 4 PCS FOR DYNAMIC 1306X500



WALL PLUG 2 PCS FOR DYNAMIC 475X500
WALL PLUG 3 PCS FOR DYNAMIC 890X500
WALL PLUG 4 PCS FOR DYNAMIC 1306X500

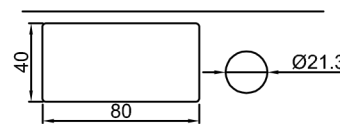


INSERT 2 PCS FOR DYNAMIC 475X500
INSERT 3 PCS FOR DYNAMIC 890X500
INSERT 4 PCS FOR DYNAMIC 1306X500



BRACKET 2 PCS FOR DYNAMIC 475X500
BRACKET 3 PCS FOR DYNAMIC 890X500
BRACKET 4 PCS FOR DYNAMIC 1306X500

MATERIAL DETAILS



GRAB SCREW 2 PCS FOR DYNAMIC 475X500
GRAB SCREW 3 PCS FOR DYNAMIC 890X500
GRAB SCREW 4 PCS FOR DYNAMIC 1306X500



ALIEN KEY 1 PCS

-Vertical Mounting
-Optional 304 QUALITY STAINLESS STEEL TOWEL RADIATOR: (RNS-DYN5089 : DYNAMIC RADIATORS)
-SATIN (BRUSHED)
-Max Operational Pressure: 10 Bar
-Inlet/Outlet: 1/2" Female Pipe Thread
-All Dimensions are in mm

Product Name	Product Code	Height	Width	Thickness	Plumbing Axes Center to Center	Hanger Axes Horizontal	Hanger to Bottom of the Product	Hanger Axes Vertical	Water Volume	Empty Weight	Thermal Output
		H	W	D	C	S	F	G	-	-	Watt - BTU/hr (Δ50°)
		mm	mm	mm	mm	mm	mm	mm	L	kg	
DYNAMIC 475 X 500	RNS-DYN5047	475	500	61	50	0	415	355	1.88	3.17	206 - 704
DYNAMIC 890 X 500	RNS-DYN5089	890	500	61	50	40	835	780	3.59	6.87	413 - 1408
DYNAMIC 1306 X 500	RNS-DYN5130	1306	500	61	50	40	1248	1190	5.30	9.10	619 - 2112

