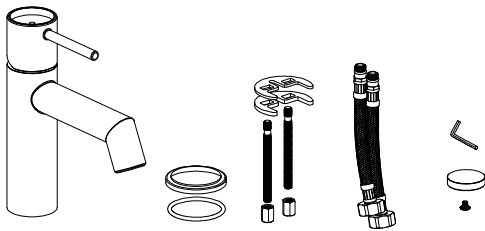
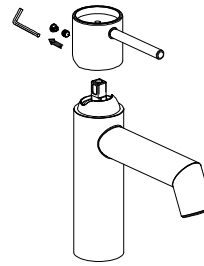


Installation Instruction

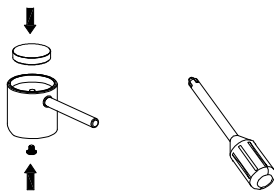
Step 1: Please read these instructions thoroughly and retain for future reference. Pressures to hot and cold supplies should be balanced for optimum performance. System must be flushed through prior to installation. Check all components.



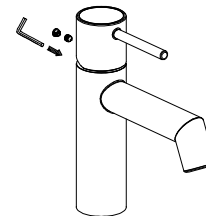
Step 2: Get out the indice behind the handle, and use allen key to remove the screw inside the handle, then take off the handle.



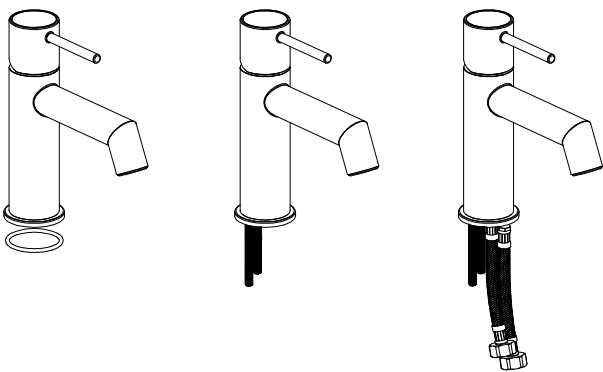
Step 3: Put the insert plate into the top of the handle, and use screw driver to fix the screw underneath the handle. PLEASE DON'T OVERTIGHTEN. PLEASE NOTE THAT THE INSERT PLATE IS MADE WITH GLASS SO TAKE CARE OF IT TO AVOID IT BEING BROKEN.



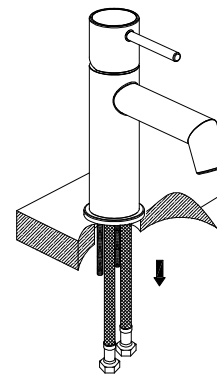
Step 4: After installing the insert plate, please put the handle back to the tap body, and fix it with screw, put back the indice behind the handle.



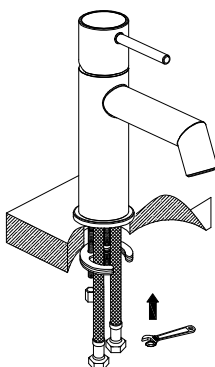
Step 5: Put the base plate under the tap body (make sure O-ring is put under the base plate), connect the fixing rods from the horseshoe fixing pack to the tap, and connect the flexible pipes to the tap.



Step 6: Put the tap on the basin, connect the flexible pipes to the water supply. Make sure hot supply is on the left, cold supply is on the right.



Step 7: Fix the horseshoe fixing and make sure the tap is fixed on the basin. Turn on the water supply to check if there is any leakage.



Step 8: Installation completed.

