

# SL2011-1

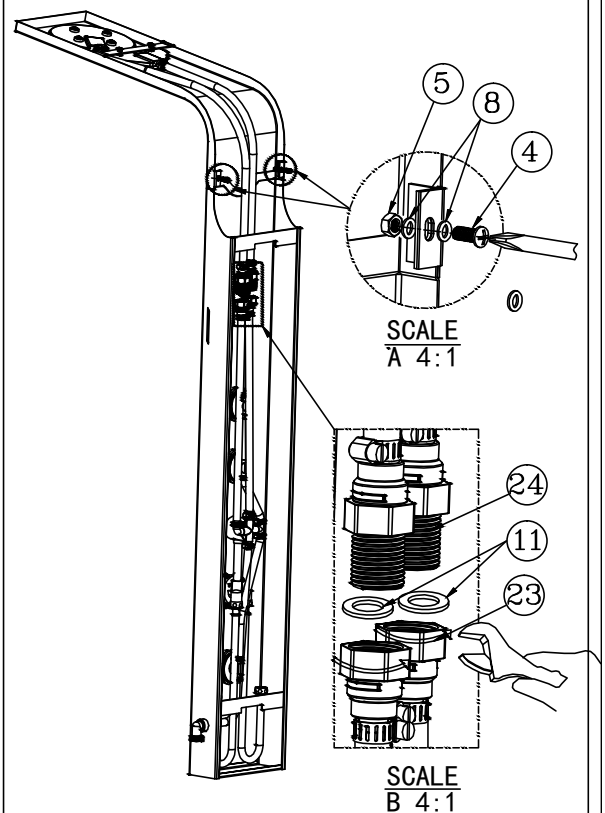
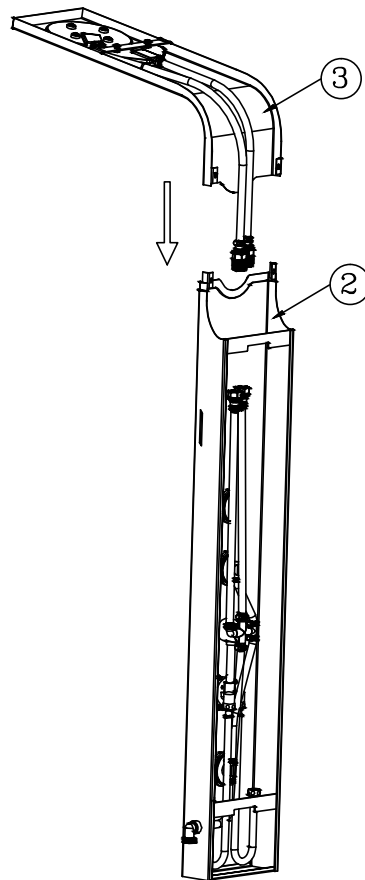
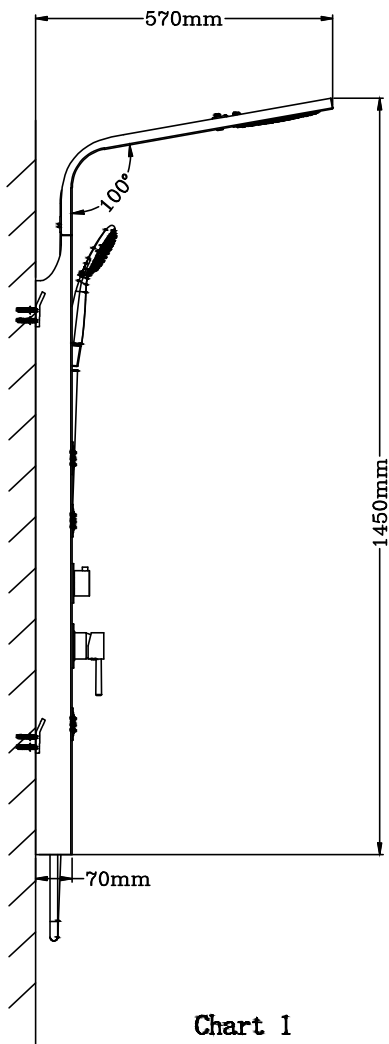
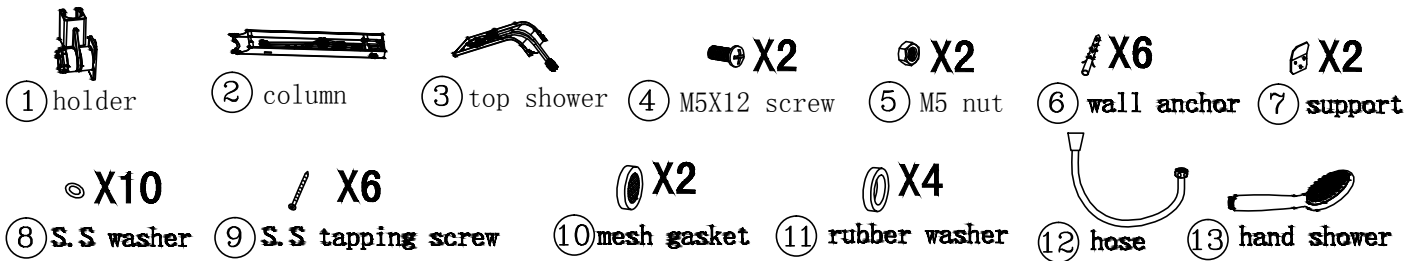


Chart 1: Dimensioned drawing

Chart 2: Insert the joint on the top art(3) into the column body (2)

Chart 3: Tighten two M5X12 screws (4) and two M5 nuts, four s.s washer(8) between top shower(3) and column (2) .Put rubber washer (11) to nut (23), then tighten G1/2 nut (23) to connector (24) by adjustable wrench

Chart 4: Connect parts in order of (19) (B) (20) (A) (21) (22) to the column(2)

Chart 5: 1) Choose the proper place for installation and mark the holes drill holes with  $\varnothing 7\text{mm}$ , 35mm deep .Insert wall anchors (6) inside the holes, tighten the s.s washer (8) and screws (9) to the wall for fixing the supports (7)

# SL2011-1

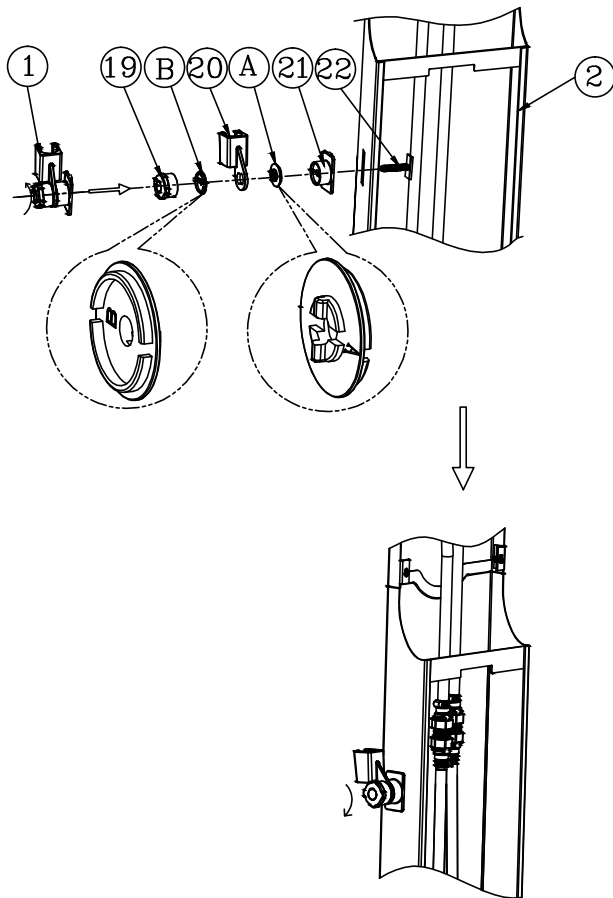
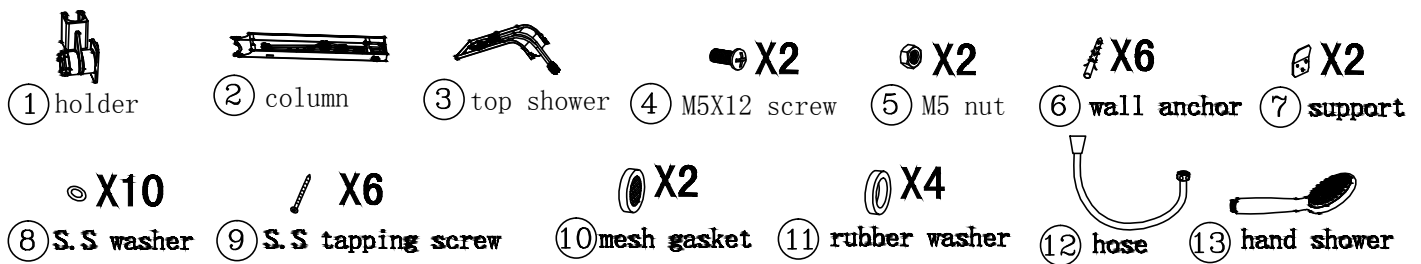


Chart 4

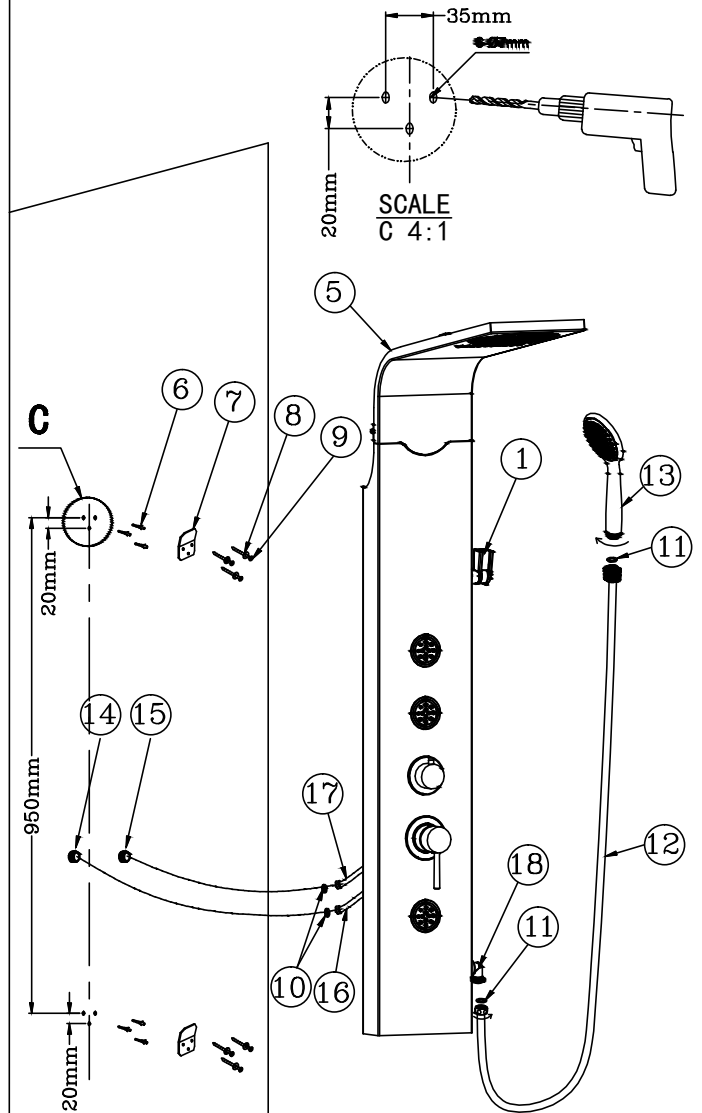


Chart 5

2) Place mesh gaskets (10) into the flexible hot (16) and cold (17) water supply pipe. And connect the two flexible pipes correspondingly to the hot (14) and cold (15) water outlets (supplied by your plumber). The hold up the column (2) to hang it on the supports (7).

3) Connect the hand shower (13) to the hose (12) when placing the rubber washer (11) in the fastening nut. Then put the hand shower into the holder (1). The other end of the hose should be connected to the end of the column (18) with a rubber washer (11) in the nut.

NOTE:

1) Do not forget to use the rubber washers to prevent leakage on the connection.

2) If you find that pressure or water volume is unusual, please clean the mesh gaskets (10) regular.