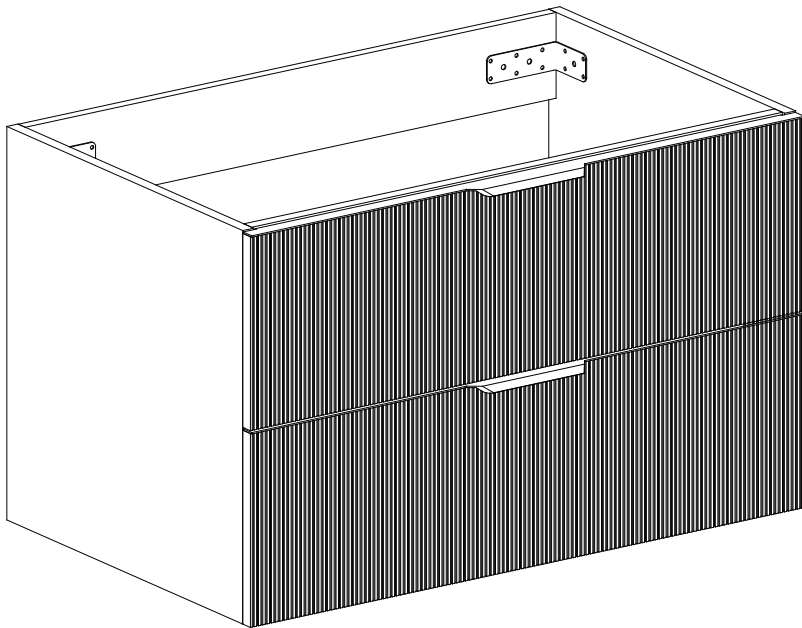




Opus Two Drawer Vanity Unit



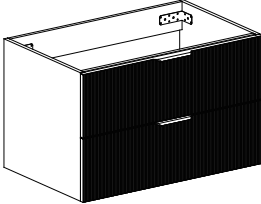
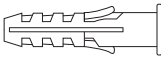

Fitting Instructions

Please follow them carefully and
leave this manual with end user




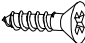
Before you begin:

1. **We recommend that this product is installed by a qualified tradesperson**, Victorian Plumbing Ltd. accept no liability for products incorrectly installed or any damage to the floor, walls, plumbing, vanity cabinet, sink, counter top, or personal injury during installation.
2. **Check the chosen wall space for any pipes/cables prior to drilling**
3. **We recommend that Vanity Units must be fastened to a load bearing wall. Check the type of wall you are fixing into and use suitable fixings.**
4. Observe all local plumbing and building codes & regulations.
5. Ensure the incoming mains water supply is switched off prior to commencing the installation.
6. For the following instructions, it is assumed that the in-wall/floor plumbing has already been prepared.
7. Unpack the product then read these instructions before proceeding. Inspect the product for damage. If any damage is found, contact our Customer Relations team.

Items Included:

No.	Description	Picture	Qty
A	Cabinet		1
B	Rawl Plug		4
C	Wall Screw		4

For optional legsets (See page 3 for installation)

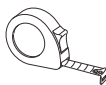
D	Leg Feet		2
E	Leg bar		2
F	Counter Sunk Bolts		8
G	Short Screw		4

Tools Required (Not Included):

Ensure the appropriate PPE is used during installation



Pencil



Tape Measure



Drill



Screw Driver



Spirit Level

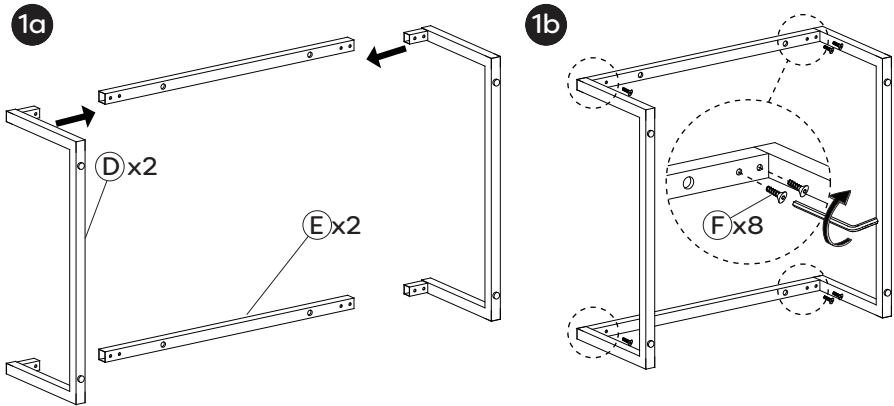
Installation

Diagrams are for illustration purposes only. Your Vanity Unit may superficially differ from these drawings however the installation guide steps still apply.

Note: For wall mounted installation of the Vanity Unit, skip to step 3.

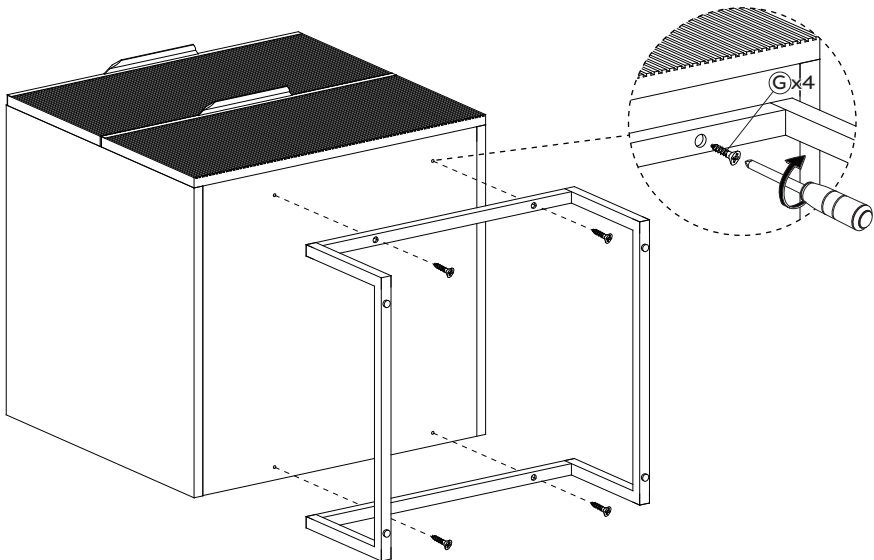
Step 1:

- Insert the two 'Leg Sets' (D) into the square holes of the two 'Leg Bars' (E), ensuring that the screw holes are all aligned. Secure the leg sets into place using the 'Counter Sunk Bolts' (F) provided, tighten with an Alan Key.



Step 2:

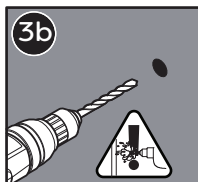
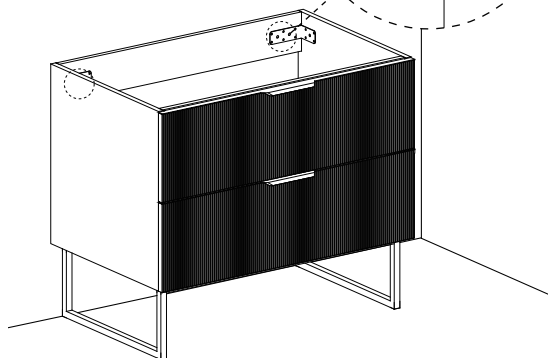
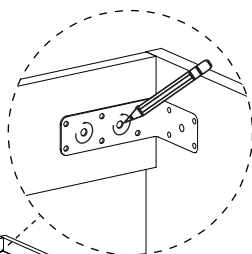
- Carefully place the 'Cabinet' (A) onto its side. On the underside of the unit, mount the 'Leg Sets' (B) to the unit using the 'Short Screws' (E) provided. (Take care not to damage the legs when lifting the cabinet back upright.)



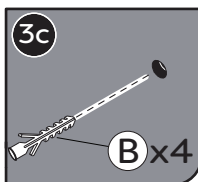
Step 3:

- Place the cabinet up against your chosen wall, then make a mark across the top of the cabinet to the wall. Using an appropriate sized drill bit, carefully drill the holes in wall then insert the 'Rawl Plugs' (B).

3a

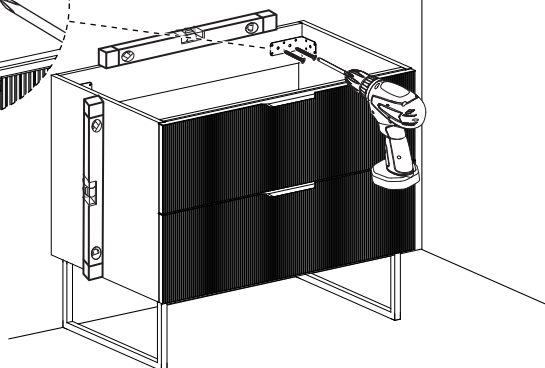
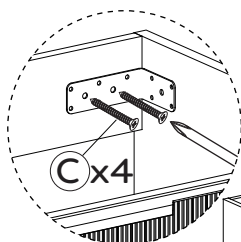


Warning:
Check the chosen wall space for
any pipes/cables prior to drilling!



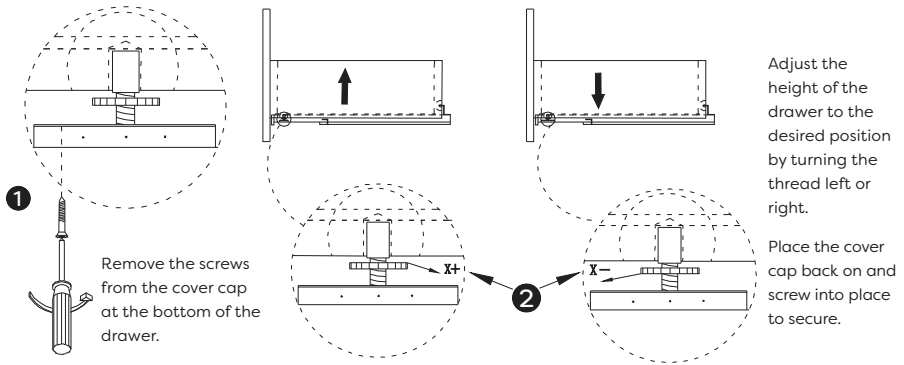
Step 4:

- Place the cabinet over the 'Rawl Plugs', secure the cabinet to the wall using the 'Wall Screws' (C) provided. Ensure the cabinet is level using a spirit level.



Furniture Installation

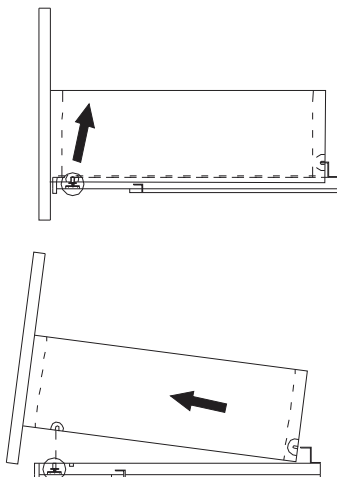
Drawer Box Adjustment:



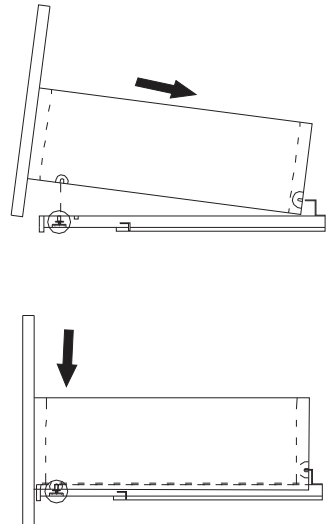
Remove and Re-fit Drawer

- Remove the drawer from the cabinet prior to fitting the unit to the wall. Pull out the drawer to its full extension and gently lift the drawer box upwards until it disengages from the runner.
- To re-fit the drawer, fully extend the drawer runners and locate drawer box onto runners. Push the drawer box fully in until you hear a 'click'. The drawer should now be correctly located onto the runners.

Remove Drawer

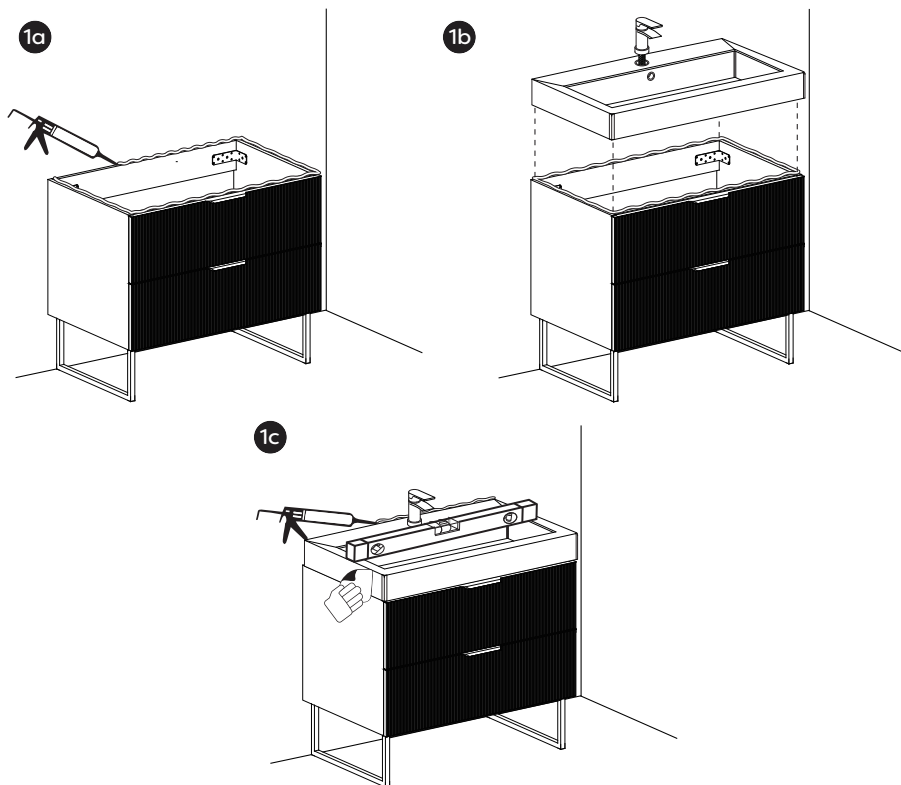


Re-Fit Drawer



Basin Installation (Not Included)

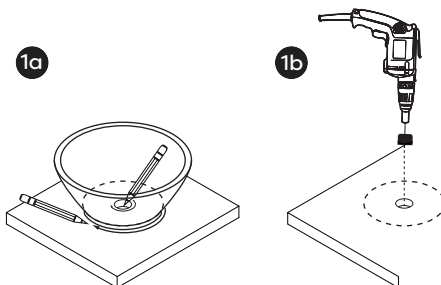
- Pipe a Bead of good quality silicone sealant around the top edge of the 'Cabinet' and place the 'Sink' over the 'Cabinet'.
- Pipe a bead of good quality silicone sealant at the back to the 'Sink' to prevent water ingress. Wipe away any excess silicone with a damp cloth and allow 24 hrs for the sealant to fully dry.

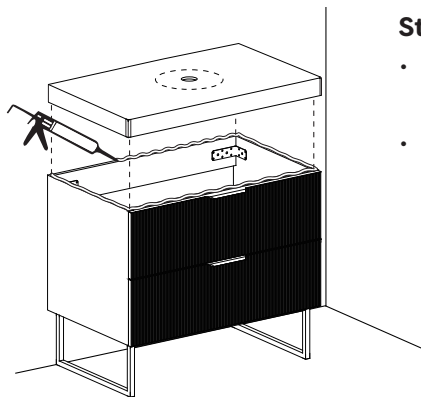


Basin & Worktop Installation (Not Included)

Step 1:

- Place your chosen 'Basin' over the 'Worktop' surface and mark the waste hole for the basin (and tap holes if applicable).
- Using an appropriately sized hole saw, carefully cut out the holes in the 'Worktop'.



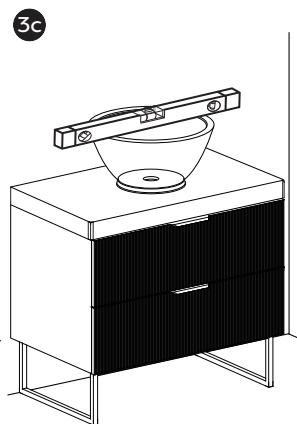
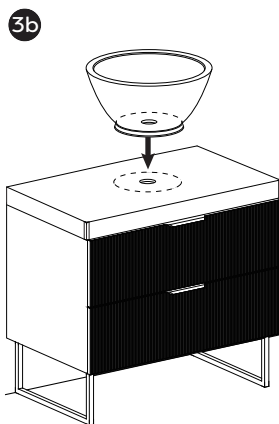
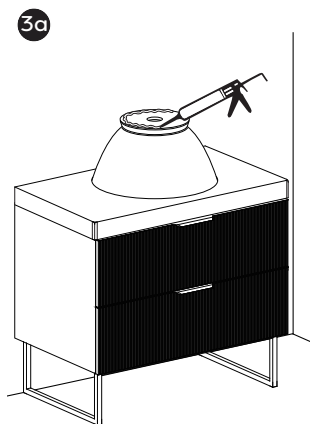


Step 2:

- Pipe a fine bead of good quality silicone sealant around the top edge of the unit.
- Place the 'Worktop' over the 'Cabinet' and slot it into place, ensuring the 'Worktop' is firmly into position when slotted. Wipe away the excess silicone with a damp cloth.

Step 3:

- Pipe a fine bead of good quality silicone sealant along the base of the 'Basin'. Place the 'Basin' onto the 'Worktop' and wipe away the excess silicone with a damp cloth and allow 24 hours for the sealant to fully dry. Ensure that all the parts are level using a spirit level.



Cleaning and Maintenance:

Drawers, and Runners:

These should be wiped out with a damp soapy cloth and wiped dry with a soft cloth as necessary. The roller runners and hinges are lubricated and should not be cleaned with a degreasing agent as this will affect the action of the moving parts. Never lean on partially or fully opened drawers in order to gain access to the units. The hinges are specified to adequately support the weight of the drawer, plus small additional weights such as wire accessories. It is advised that once the vanity unit has been installed you should check every six months that all screws on the hinges are tight.

Please Note: Unit is water resistant, but not waterproof. All spillages and splashes should be wiped dry, failure to do so may shorten the life expectancy of the product and invalidate any guarantees.

