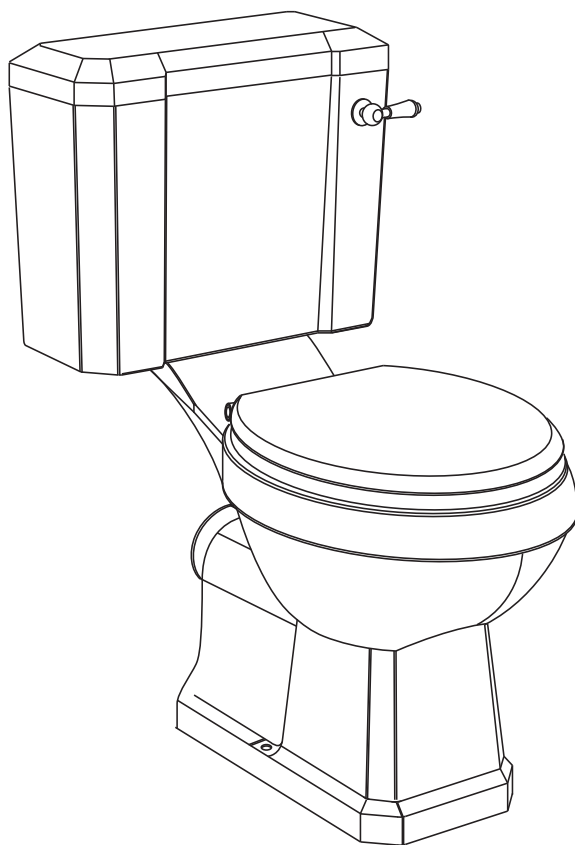




## **Traditional Close Coupled Toilet and Cistern**

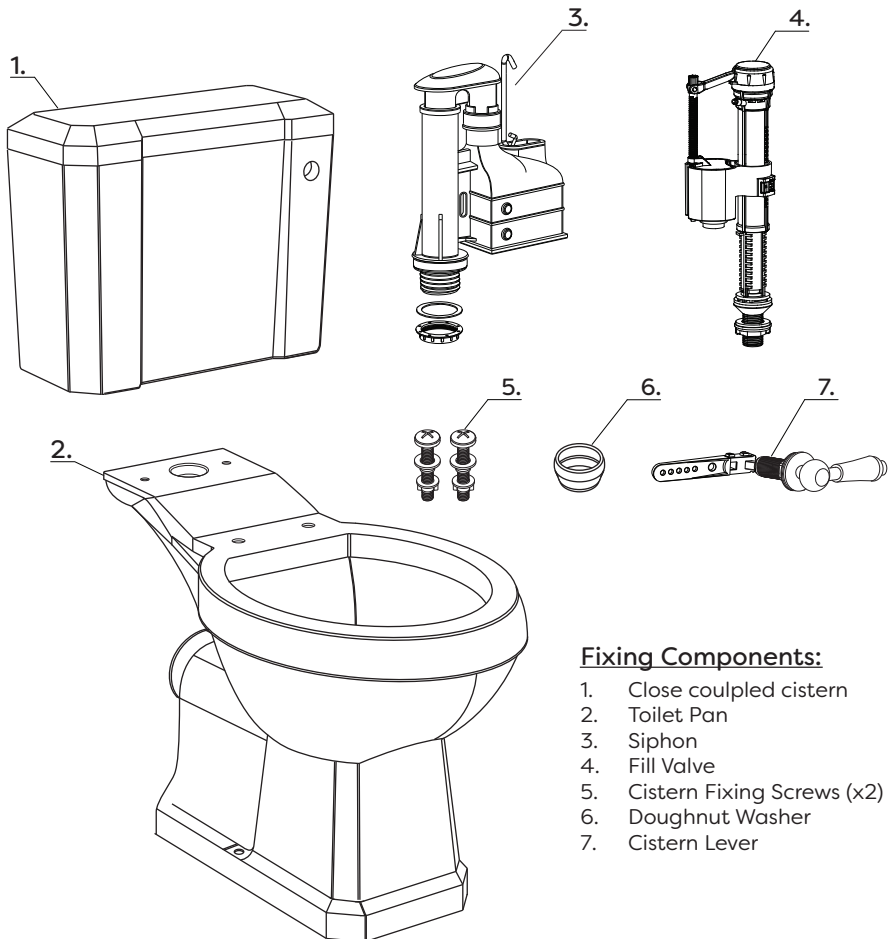


## **Fitting Instructions**

Please follow them carefully and  
leave this manual with end user

## Before you begin:

1. **We recommend that this product is installed by a qualified tradesperson**, Victorian Plumbing Ltd. accept no liability for products incorrectly installed or any damage to the floor, walls, plumbing, toilet pan, cistern, or personal injury during installation.
2. **Check the chosen wall space for any pipes/cables prior to drilling**
3. **We recommend that the cistern must be fastened to a load bearing wall. Check the type of wall you are fixing into and use suitable fixings.**
4. Observe all local plumbing and building codes & regulations.
5. Ensure the incoming mains water supply is switched off prior to commencing the installation.
6. For the following instructions, it is assumed that the in-wall/floor plumbing has already been prepared.
7. Unpack the product then read these instructions before proceeding. Inspect the product for damage. If any damage is found, contact our Customer Relations team.

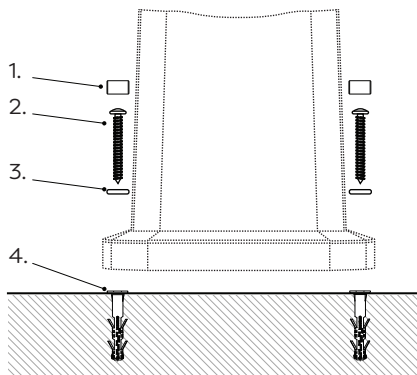
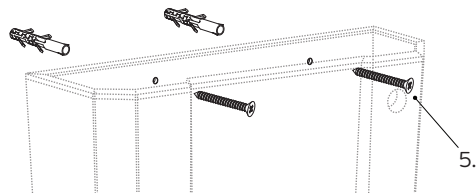


### Fixing Components:

1. Close coupled cistern
2. Toilet Pan
3. Siphon
4. Fill Valve
5. Cistern Fixing Screws (x2)
6. Doughnut Washer
7. Cistern Lever

## Recommended Fittings:

1. Screw Cap Cover (x2)
2. Pan Screw (x2)
3. Washer (x2)
4. Rawl Plug (x4)
5. Wall Screw (x2)

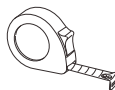


## Tools Required (Not Included):

\*Ensure the appropriate PPE is used during installation\*



Pencil



Tape Measure



Drill



Screw Driver



Spirit Level



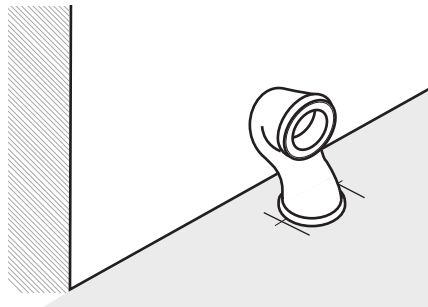
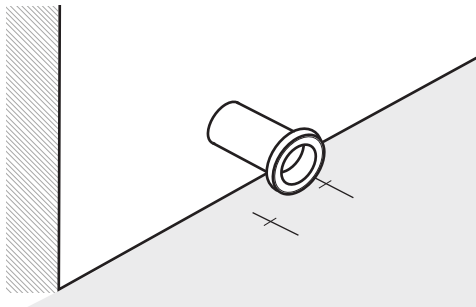
Adjustable Wrench



Silicone Sealant

## Pan connector:

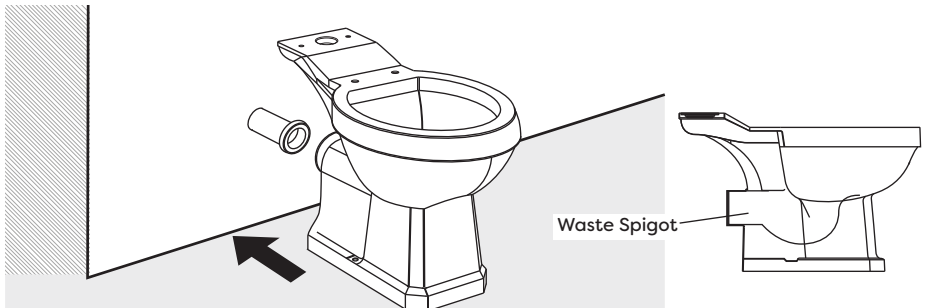
- **Please note:** The pan connector should be prepared for connection to the toilet being installed (Not Included). We recommend to purchase the pan connector (waste pipe) separately.
- Depending on your toilet, the pan connector could be installed through the wall or the floor.



## Installation

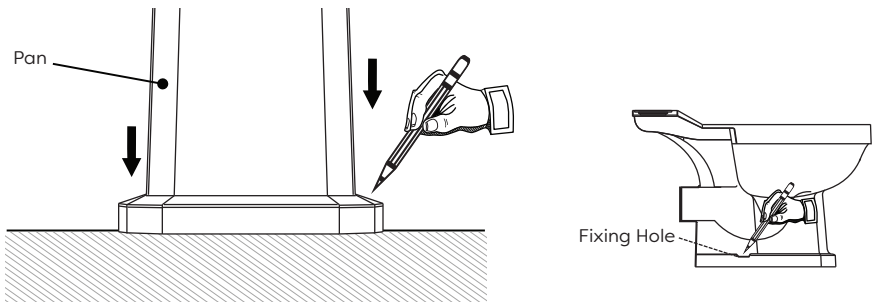
### Step 1:

- Once the pan connector pipe is prepared, add a small amount of lubricant to the seal, then push the toilet into the required position, with the pan connector fully connected to the soil pipe (spigot).



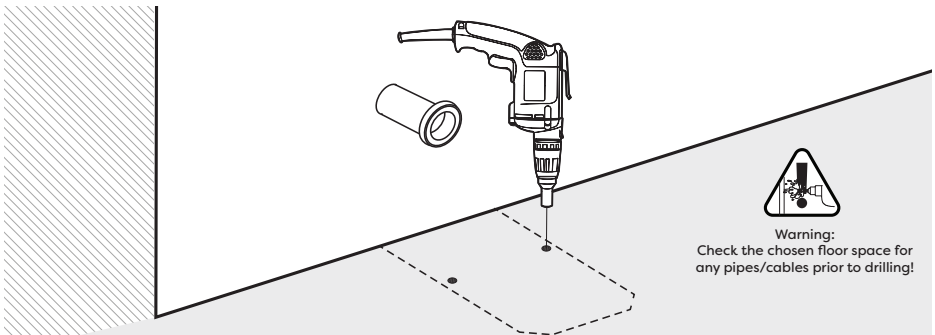
### Step 2:

- Ensure that the toilet pan is level and fully backed against the wall. Mark a line around the bottom edge of the toilet pan, then mark the fixing holes located on both sides of the pan.



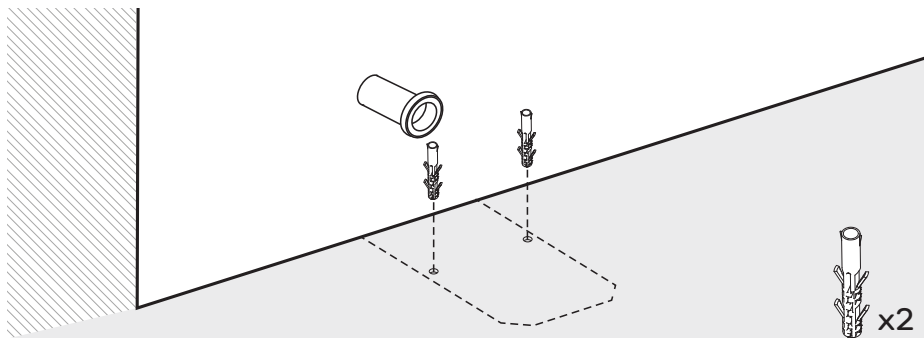
### Step 3:

- Remove the pan from location and carefully drill the holes in the floor, ensuring that no pipes or cables can be damaged.



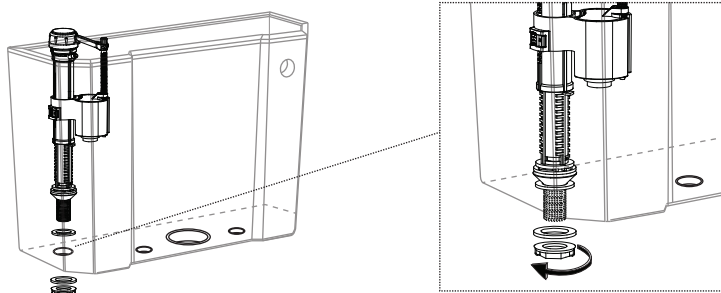
### Step 4:

- Insert the rawl plugs into the pre drilled holes if you are fitting into a solid floor.



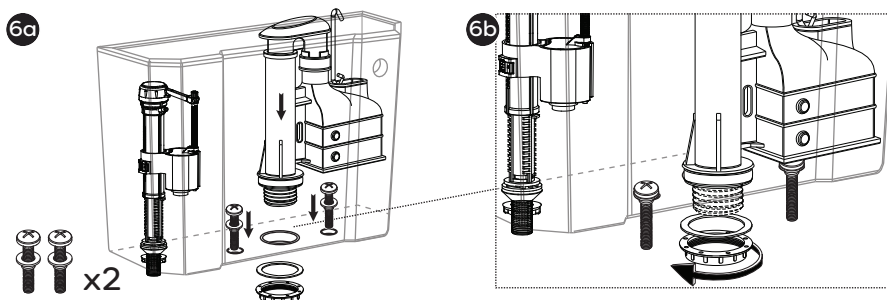
### Step 5:

- Prepare the cistern by inserting the fill valve within the cistern, then secure into place by screwing the back nuts to the underside of the cistern (as shown in the diagram below).



### Step 6:

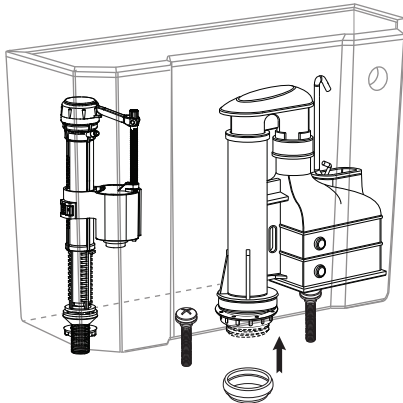
- Unscrew the back nuts off the cistern fixing screws, then insert the screws into the cistern. Unscrew the base nut and washer from the siphon. Insert the siphon into the central hole of the cistern, then secure into place by screwing the washer and base nut into the underside of the cistern (as shown in the diagram below).



## Step 7:

- Fit the thick doughnut washer to the tail of the siphon and ensure it is fully surrounding the nut. Fit the cistern onto the toilet pan, allowing the fittings to pass through the holes in the pan. Screw the back nuts onto the cistern fixing screws and tighten.

7a

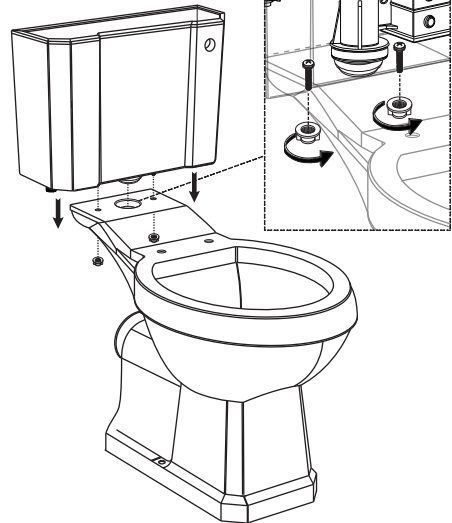


x1



x2

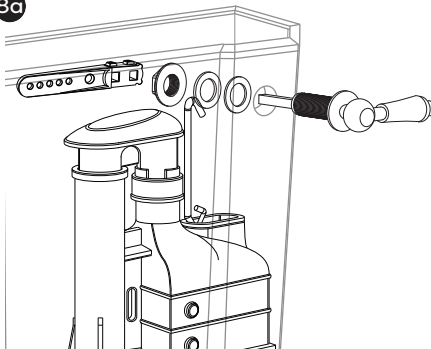
7b



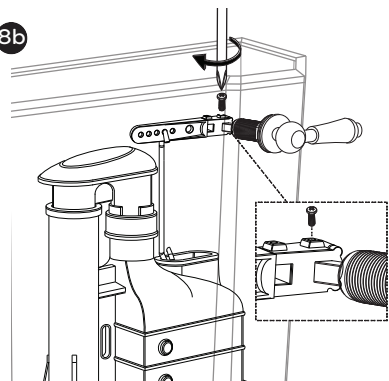
## Step 8:

- Remove the back nut and washer from cistern lever handle. Insert the handle into the flush hole on the cistern, then secure into place by screwing the washer and back nut onto the threaded tail of the handle (as shown in the diagram below).
- Place the adjustable lever onto the spindle then attach the hook from the siphon to the lever in a suitable hole. Secure the handle into place by screwing the set screw onto the spindle. Test the handle to ensure the flush mechanism is working as intended.

8a

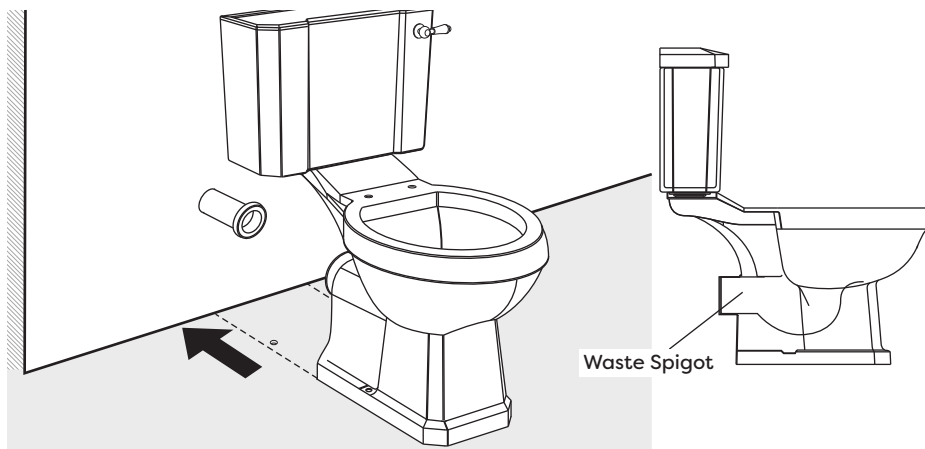


8b



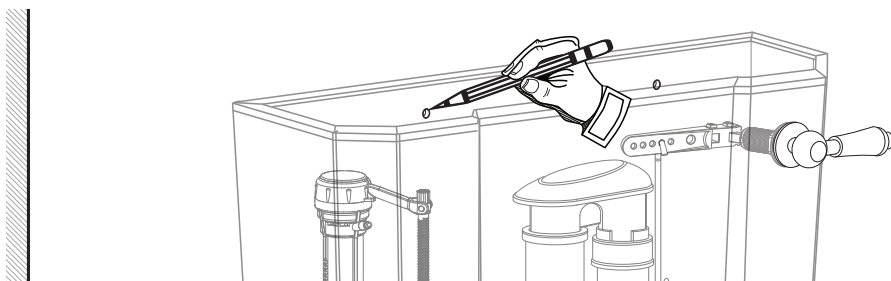
### Step 9:

- Re-fit the toilet pan and push the waste spigot onto the pan connector, add a small amount of lubricant to assist. Align the fixing holes on the pan with the floor brackets.



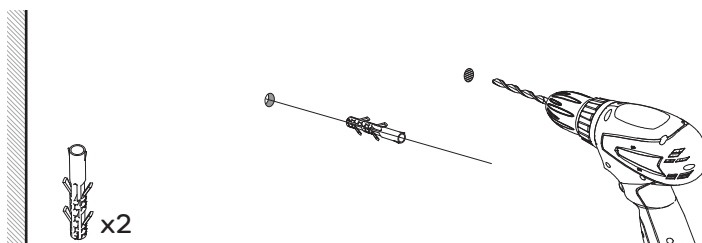
### Step 10:

- Once aligned, mark the fixing holes at the back of the cistern to the wall. Ensure that the markings are level using a spirit level.



### Step 11:

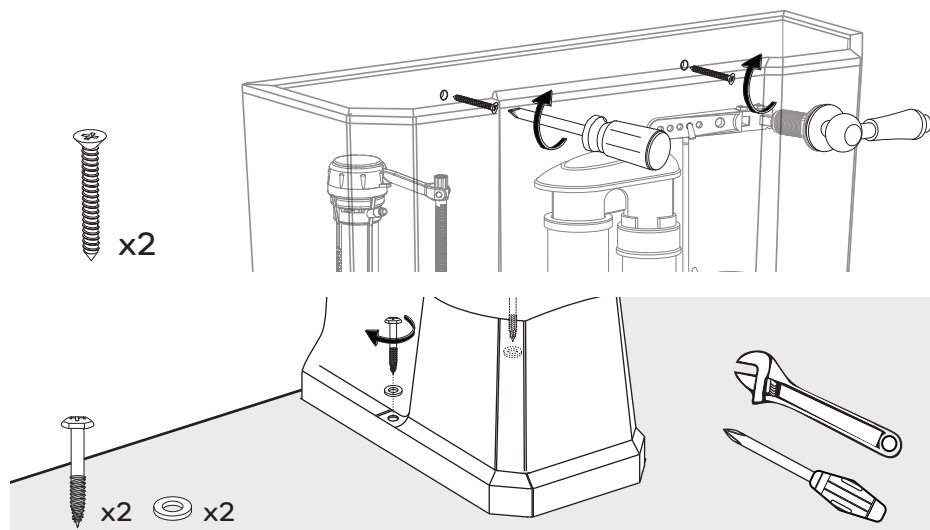
- Remove the pan from location and carefully drill the holes in the wall, ensuring that no pipes or cables can be damaged. Then insert rawl plugs into the drilled holes.



Warning:  
Check the chosen wall space for  
any pipes/cables prior to drilling!

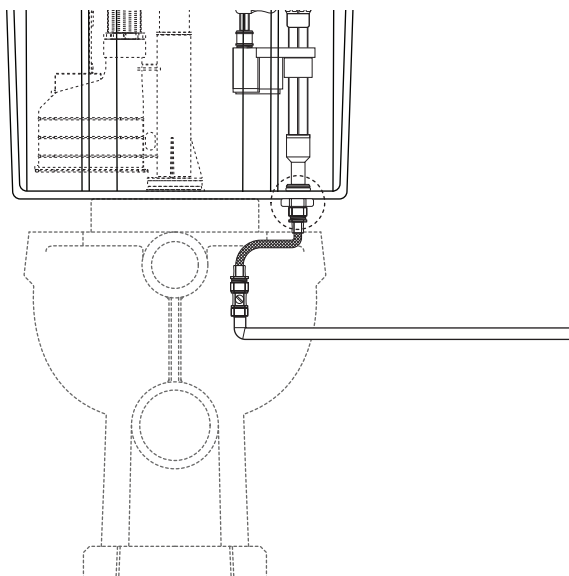
## Step 12:

- Re-fit the pan over the fixing holes. Once aligned, secure the toilet pan and cistern into position using the appropriate fixings.



## Step 13:

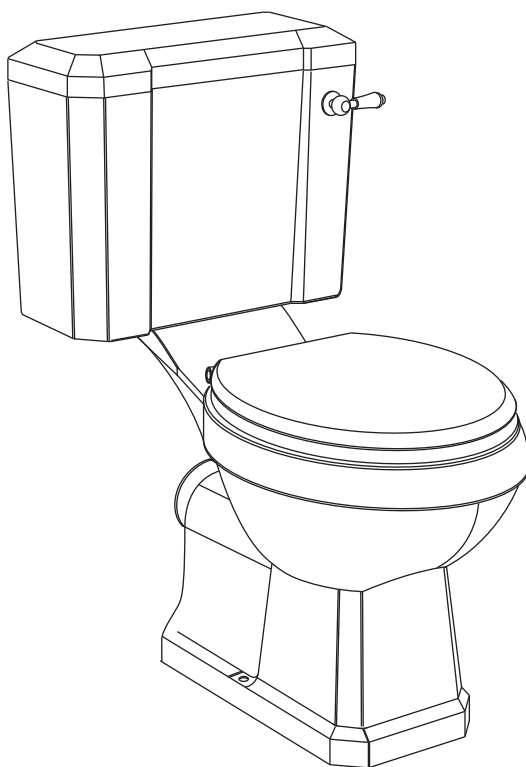
- From underneath the cistern, make the connection from the mains water supply to the threaded tail of the fill valve. Tighten all the connections with an adjustable wrench.





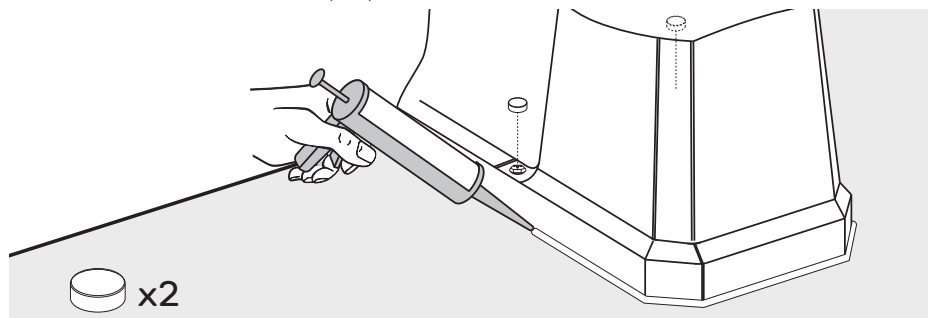
### Step 14:

- Once assembly is completed, turn on the water supply and test the flush operation. Check all joints and connections for any leaks.



### Step 15:

- Finish by pushing on the screw covers. Once installation is completed, apply a fine bead of good quality silicone around the bottom edge of the toilet pan. Allow 24 hours for the sealant to fully dry.

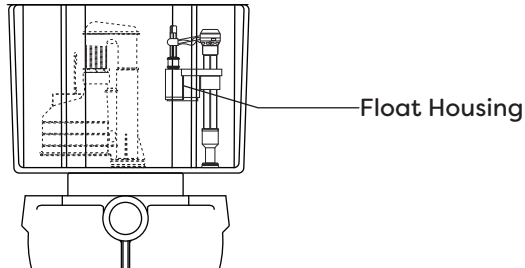


## Troubleshooting

**Please note:** It is recommended to turn off the water supply before carrying out any internal maintenance.

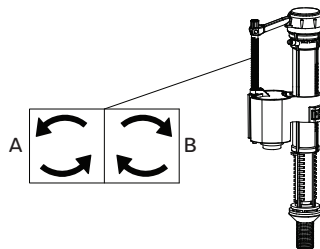
### **Water continues to run into the toilet pan:**

- Check the fill valve is closing when reaching the correct recommended water level. Ensure the float mechanism is not being obstructed and causing the cistern to continually fill thus causing an overflow into the toilet pan.



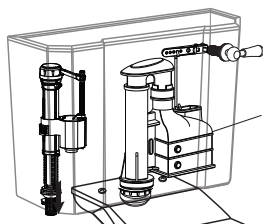
### **Insufficient or too much water entering the cistern tank:**

- Adjust the fill valve by turning the float screw, until the desired level is reached. Turning the float screw anti-clockwise (**A**) will lower the water level, and turning the float screw clockwise (**B**) will increase the water level.



### **No flush operation when the flush lever is pressed:**

- Carefully remove the basin lid and push the flush handle down. Check that the lever engages the siphon properly (that the hook on the siphon is properly connected to the lever). If the cistern flushes 'normal', ensure the flush handle and lever is fitted in the correct orientation.



If the siphon does not flush when engaged, replace the siphon.

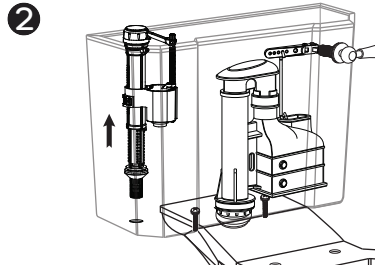
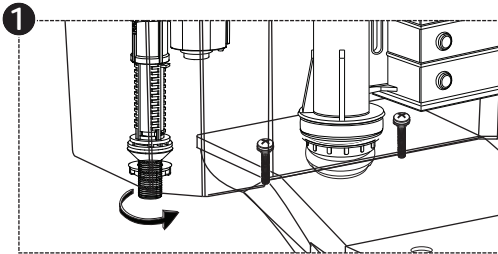
## Maintenance

**Please note:** Turn off the water supply and flush the toilet to drain away the water in the tank, it is also recommended to have a bucket under the tank to catch the draining water.

Depending on the toilet design you may need to remove the toilet pan from its location to access the inlet valve water supply and retaining nut.

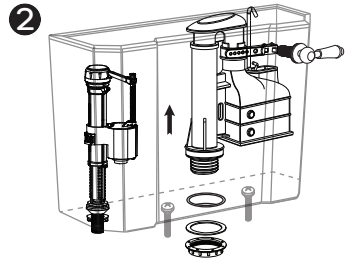
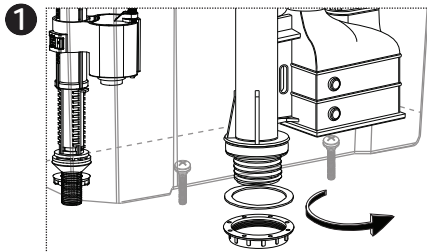
### To replace the Fill valve:

- Disconnect the inlet supply pipe. Unscrew the nut on threaded tail then remove the fill valve from the cistern tank. Once replaced, ensure all components are re-fitted.



### To replace the Flush Valve:

- Disconnect the inlet supply pipe, unscrew the wall screws and back-nuts from the cistern fixing screws to lift the cistern from the pan. Unhook adjustable lever on the handle. Remove the Siphon from the cistern by unscrewing the base nut. Upon replacing, ensure all components are re-fitted and the siphon is in the correct orientation.



## Recycling and Disposal:

Please recycle the packaging in accordance with your local government regulations on waste handling and follow the same advice at the end of the products life.

## Cleaning:

To maintain the surface finish of your product, wipe the toilet regularly using a clean damp cloth, a mild detergent mixture can be used. Do not use abrasive cleaning agents or materials which can strip and scratch the surface.

**[www.victorianplumbing.co.uk](http://www.victorianplumbing.co.uk)**