

MIRA FLIGHT SHOWER TRAY

Installation and User Guide

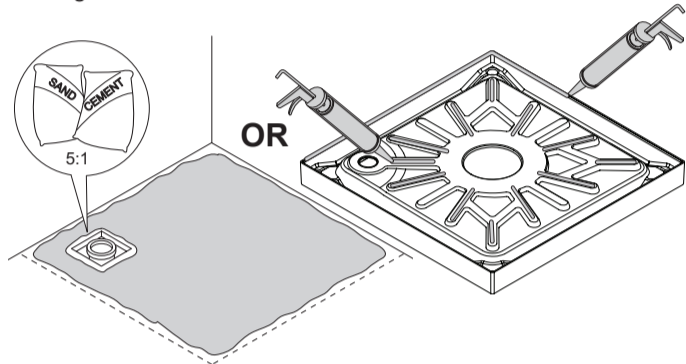
GUARANTEE

Your product has the benefit of our manufacturer's 10 year guarantee (5 years for any commercial installations) which starts from the date of purchase. **Note!** Wastes, upstand kits and riser kits are guaranteed for 1 year only. For terms and conditions refer to the back cover of this guide.

INSTALLATION

1 Non Upstand Trays

Note! Where the shower tray comes into contact with the wall, apply a liberal amount of silicone sealant before installation. This will help secure the shower tray in position and reduce any rubbing of the surfaces.



Carefully cover the waste to prevent any dirt and debris from entering while preparing a bed of sand and cement or silicon sealant for shower tray.

Ensure floor/substrate is level, solid and with no movement.

Ensure floor/substrate is dry, clean and dust/debris free.

Ensure floor/substrate is suitably primed.

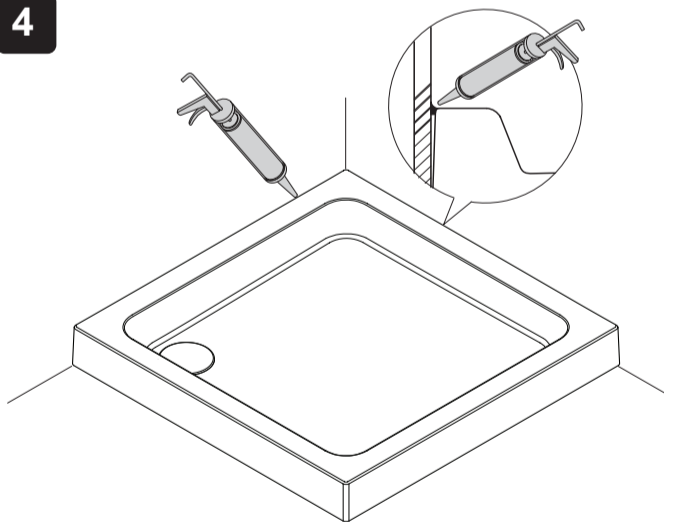
It is recommended to use a 5:1 ratio of sand and cement, ensuring adequate mortar distribution under the tray with a minimum 10mm thickness.

Alternatively, if this is not practical, a suitable construction adhesive may be used but this **MUST** be suitable for the substrate being adhered to (check construction adhesive label for suitability prior to use).

The construction adhesive should be applied to all contact points underneath the tray. The tray should then be pushed down onto the substrate until it is level in all planes.

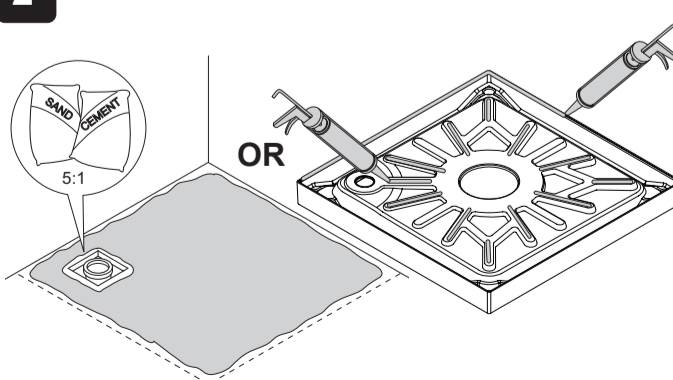
Important! Kohler Mira are not liable for the performance of 3rd party adhesives and materials.

4



Apply silicone sealant in accordance with the manufacturer's instructions to seal the shower tray to the wall.

2



RECOMMENDED USAGE

Domestic	✓	Heavy Commercial	✗
Light Commercial	✓	Healthcare	✓

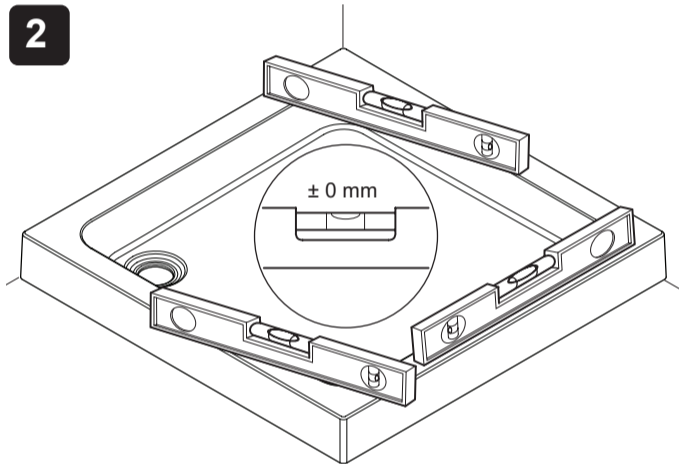
Notification to designers, installers and users:

The majority of all shower trays will show an increase in the potential for slipping, when the surface is wet. This is particularly the case when soap, shampoo, bath oil etc. are used. The Construction Products Directive (89/106/EEC)".

GENERAL INFORMATION

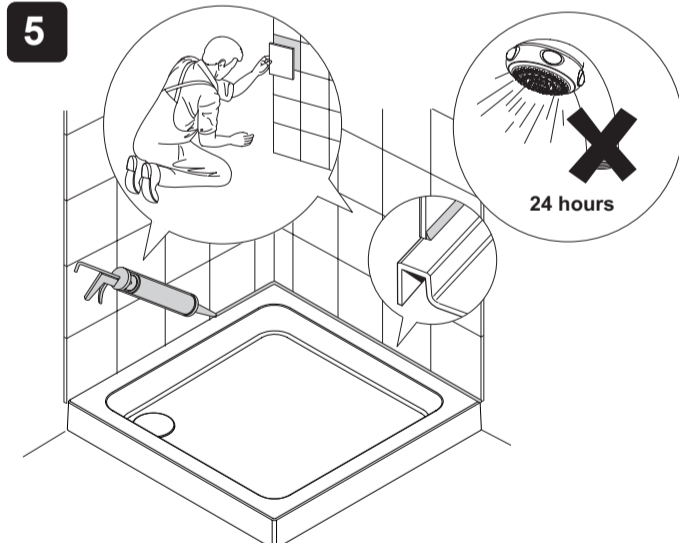
1. Read all of these instructions and retain this guide for later use.
2. Pass on this guide in the event of change of ownership of the installation site.
3. Follow all warnings, cautions and instructions contained in this guide.
4. **Warning!** Two-person lift.
5. Before installation, carefully remove all of the protective film from the tray for inspection.
6. Carefully unpack and check the tray for colour, size, flatness, general acceptability and compatibility with the shower enclosure and other bathroom furniture.
7. Check for transit damage.
8. Report any faults immediately to your supplier. No claims will be considered after installation.
9. Fitting this product is acceptance of quality.
10. **Caution!** Additional protective coverings such as a dust sheet should be used to protect the tray from damage from falling objects during installation.

2



Place the shower tray on a flat surface and using a spirit level check that it is straight and flat and that the shower cubicle will sit on its surface correctly when fitted.

5



Tile the walls down on top of shower tray.

Apply silicone sealant in accordance with the manufacturer's instructions to seal the shower tray to the tiled wall surface.

Carefully cover the waste to prevent any dirt and debris from entering while preparing a bed of sand and cement or silicon sealant for shower tray.

Ensure floor/substrate is level, solid and with no movement.

Ensure floor/substrate is dry, clean and dust/debris free.

Ensure floor/substrate is suitably primed.

It is recommended to use a 5:1 ratio of sand and cement, ensuring adequate mortar distribution under the tray with a minimum 10mm thickness.

Alternatively, if this is not practical, a suitable construction adhesive may be used but this **MUST** be suitable for the substrate being adhered to (check construction adhesive label for suitability prior to use).

The construction adhesive should be applied to all contact points underneath the tray. The tray should then be pushed down onto the substrate until it is level in all planes.

Important! Kohler Mira are not liable for the performance of 3rd party adhesives and materials.

11. We recommend this tray is fitted as part of a fully enclosed cubical.

If this tray is fitted as a walk-in installation, it is expected that an amount of water will spill onto the open area of the floor. We would therefore advise fixing a threshold strip to minimize this.

Note! Where the shower tray comes into contact with the wall or plaster board surface, apply a liberal amount of silicone sealant before installation. This will help secure the shower tray in position and reduce any rubbing of the surfaces.

12. Hand tighten the waste to ensure a correct seal. Excessive overtightening can lead to damage. **Caution! DO NOT** stand on waste outlet as damage may occur.

13. Once the waste pipe has been connected pour water into the tray to check the tray and pipe connection for correct drainage prior to final fix and tiling.

14. Excessive flow rates may lead to overflowing and leaking. Flow rate into the tray must not exceed more than 25 litres per minute. We recommend a drainage test is carried out to ensure the waste is adequate for the flow delivered.

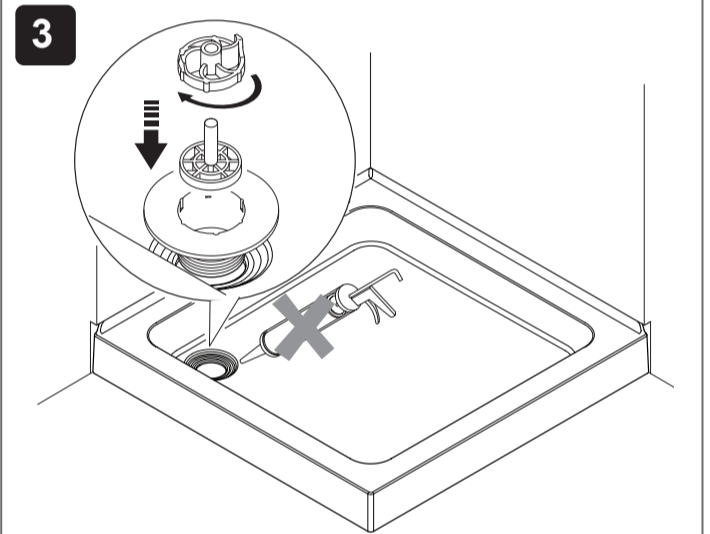
15. All legs supplied must be fitted. Make sure that all locking nuts are secured.

16. If you wish to raise the shower tray and not use the legs provided, please contact us for installation advice.

17. The shower tray should be positioned so that the waste is easily accessible for maintenance.

18. Water Spray may extend beyond the entrance of walk-in enclosures and we recommend tiling of the adjacent area.

3

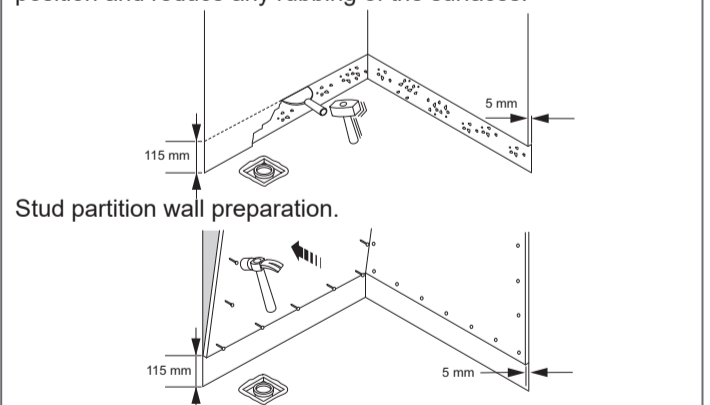


Fit the waste, as per the instructions supplied with the waste. **Note! Do Not** Use silicone sealant.

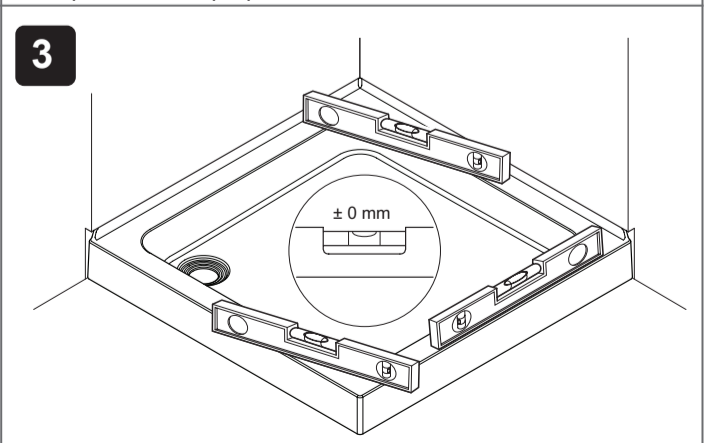
INSTALLATION

1 Upstand Trays

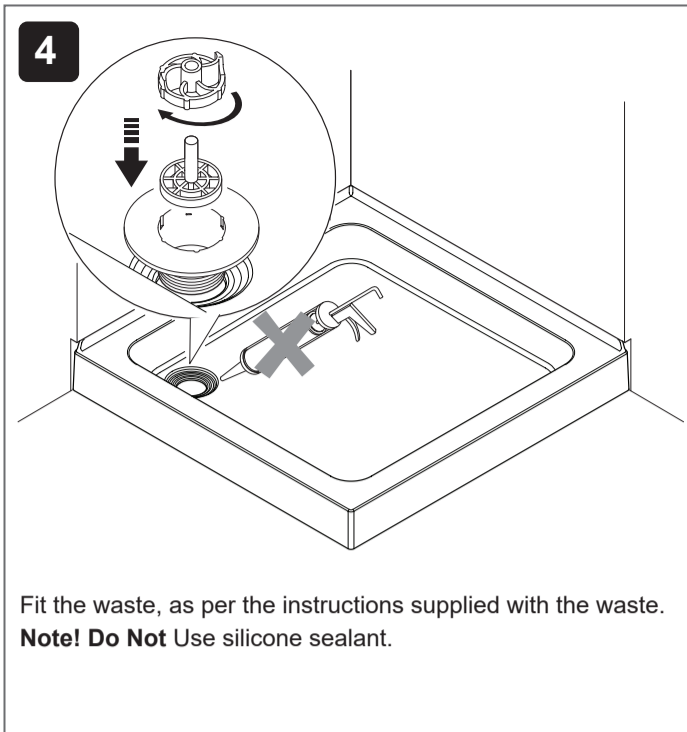
Note! Where the shower tray comes into contact with the wall or plaster board surface, apply a liberal amount of silicone sealant before installation. This will help secure the shower tray in position and reduce any rubbing of the surfaces.



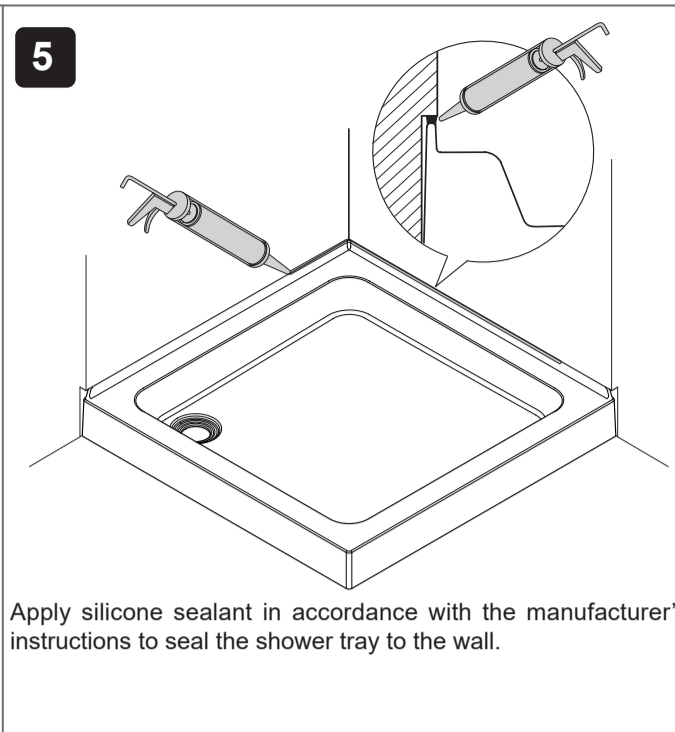
Stud partition wall preparation.



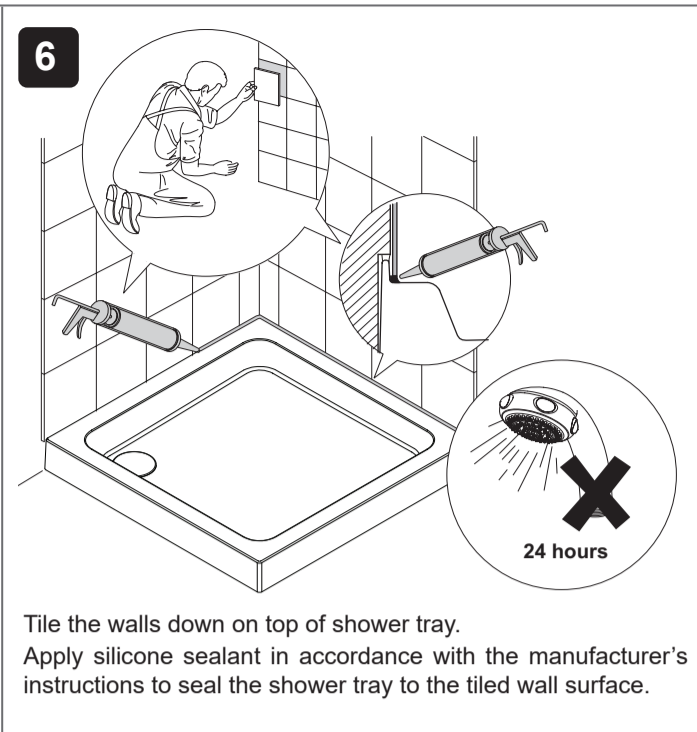
Place the shower tray on a flat surface and using a spirit level check that it is straight and flat and that the shower cubicle will sit on its surface correctly when fitted.



Fit the waste, as per the instructions supplied with the waste.
Note! Do Not Use silicone sealant.



Apply silicone sealant in accordance with the manufacturer's instructions to seal the shower tray to the wall.



Tile the walls down on top of shower tray.
Apply silicone sealant in accordance with the manufacturer's instructions to seal the shower tray to the tiled wall surface.

7 If you want to install your shower tray using a riser conversion kit, please refer to the Installation and User Guide packed with the riser kit.

CARE AND MAINTENANCE

Warning! The use of grout/tile cleaners, scale removers, abrasive scourers, drain unblockers and other powerful detergents may lead to damage of metallic, plated and plastic surfaces, including the tray and shower waste.

The acrylic ABS surface of this shower tray has good resistance properties to acids but should not come into contact with alkalis or organic solvents, such as caustic soda, dry cleaning agents and paint strippers and strong acids. Should the shower tray be subjected to any non-approved substance it must be cleaned immediately. Particular care must be taken not to damage the manufacturing logo.

Only clean this shower tray with hot soapy water, the tray should be wiped dry with a lint free cloth.

Cleaners of gritty or abrasive nature should **never** be used.

Care should be taken when cleaning anti-slip surface.

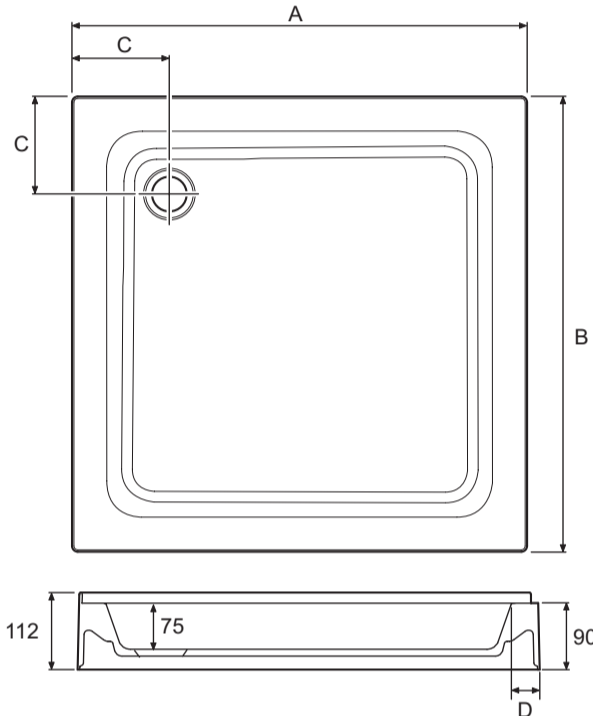
Regularly clean the waste to ensure correct operation.

Kohler Mira cannot be held responsible for damage or the effects e.g. discoloration, caused by third party substances and / or materials such bath or shower mats.

DIMENSIONS

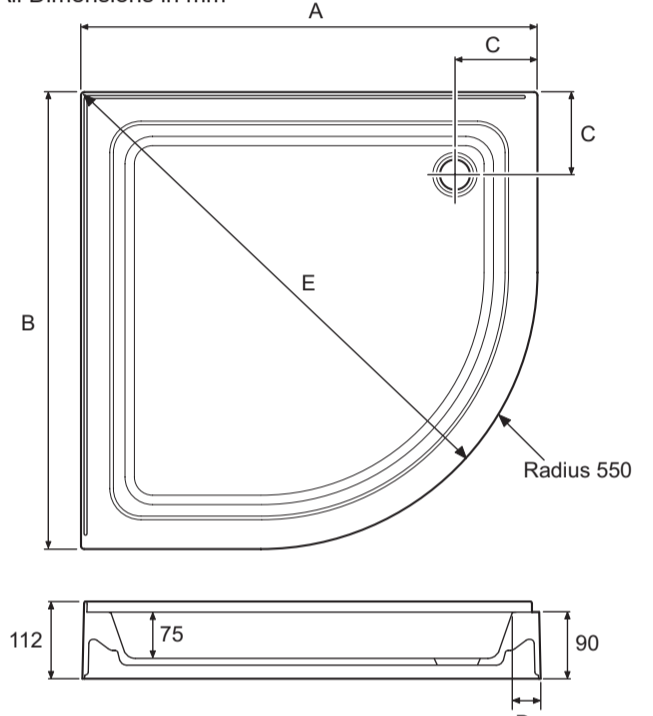
Square or Rectangular Shower Tray

All Dimensions in mm



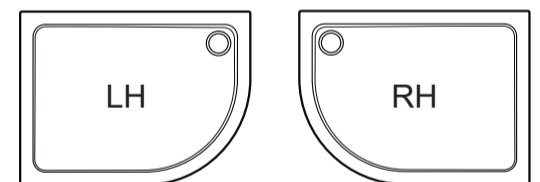
Quadrant Shower Tray

All Dimensions in mm

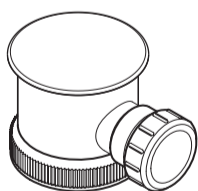


Flat Top				Legs	Upstand			
A	B	C	D		A	B	C	D
760	760	160	55	5	770	770	165	60
800	800	160	55	5	810	810	165	60
900	900	160	55	5	910	910	165	60
900	760	160	55	5	910	770	165	60
1000	760	160	55	7	1010	770	165	60
1000	800	160	55	7	1010	810	165	60
1200	760	160	55	7	1210	770	165	60
1200	800	160	55	7	1210	810	165	60
1200	900	160	55	7	1210	910	165	60
1400	800	160	55	7	1510	770	165	60

Flat Top				Legs	Upstand				E
A	B	C	D		A	B	C	D	
800	800	160	55	5	810	810	165	60	918
900	900	160	55	5	910	910	165	60	1047
1000	800	160	55	7					1054



SPARE PARTS



1783.230 Waste



1783.231 Cover, Flange, Rubber Seal, Tool and Hair Trap



If you need a copy of the Declaration of Performance, then please contact Customer Services

CUSTOMER SERVICE

Guarantee

Your product has the benefit of our manufacture's 10 year guarantee (5 years for any commercial installations) which starts from date of purchase. This guarantee only applies in the United Kingdom and Republic of Ireland. **Note!** wastes, upstand kits and riser kits are guaranteed for 1 year only. To activate this guarantee, please return your completed registration card, visit our website or free phone 0800 0731248 within 30 days of purchase (UK only).

Within the guarantee period we will resolve defects in materials or workmanship by either repairing the product, providing new goods and parts to you in replacement or refunding (up to but not in excess of) the original purchase price, as we may choose.

This guarantee is in addition to your statutory rights and is subject to the following conditions:

- The guarantee applies solely to the original installation under normal domestic use and to the original purchaser only. The product must be installed and maintained in accordance with the instructions given in this guide. The product must be inspected and issues reported before installation.
- Servicing must only be undertaken by us or our appointed representative. **Note!** If a service visit is required the product must be fully installed and connected to services.
- Repair under this guarantee does not extend the original expiry date. The guarantee on any replacement parts or product ends at the original expiry date.
- For trims or consumable items we reserve the right to supply replacement parts only.

The guarantee does not cover:

- Call out charges for damage or defects caused by incorrect installation, frost damage, mildew, limescale, corrosion, chemical attack, lack of maintenance, improper use, inappropriate cleaning (please refer to our Care and Maintenance Instructions) or where no fault has been found with the product.
- Compensation for loss of use of the product or consequential or indirect loss of any kind.
- Damage or defects caused if the product is repaired or modified by persons not authorised by us or our appointed representative.
- Wear and tear.
- Accidental or wilful damage.
- Products purchased ex-showroom display.
- Costs of removal of the product following installation and/or reinstallation of any replacement product (or part) including without limitation, tiling costs.

IMPORTANT: TRAYS MUST BE INSPECTED FOR DEFECTS AND/OR DISTORTION PRIOR TO INSTALLATION. THIS GUARANTEE DOES NOT COVER THE COSTS OF REMOVAL AND/OR REINSTALLATION WHERE A DEFECT WOULD HAVE BEEN DISCOVERED BY INSPECTION PRIOR TO INSTALLATION.

What to do if something goes wrong

If your product does not function correctly when you first use it, contact your installer to check that it is installed in accordance with the instructions in this manual. If this does not resolve the issue, contact us for help and advice.



Mira Showers Website (www.mirashowers.co.uk)

Visit our website to register your guarantee, download user guides, diagnose faults, purchase our full range of accessories and popular spares, or request a service visit.



Spares and Accessories - We hold the largest stocks of genuine Mira spares and accessories. Contact us for a price or visit our website to purchase items from our accessory range and popular spares. (Only available in the United Kingdom)

To Contact Us: UK

0800 001 4040



Email - Visit
askus@mirashowers.com



By Post: **Mira Customer Services Dept, Cromwell Road, Cheltenham, Gloucestershire GL52 5EP**



EU Importer address
K/E S.A.S.
3 rue de Brennus,
93631, La Plaine Saint-Denis,
France

To Contact Us: Eire Only

01 531 9337



E-mail: CustomerServiceEire@mirashowers.com

Mira is a registered trade mark of Kohler Mira Limited.

The company reserves the right to alter product specifications without notice.

