



# Shower Door Fitting Instructions

**HALF HEIGHT SHOWER DOORS WITH 360° HINGES ARE INSTALLED IN THE SAME MANNER AS OUR STANDARD HALF HEIGHT SHOWER DOORS.**

Please read before beginning your installation. These instructions have been prepared as a guide and also aim to assist in the installation of any special enclosures or door configurations.

These instructions are suitable for our standard & luxe range of shower enclosures, some bracketry will be grey to compliment the luxe range.

**In the case of any difficulties being encountered, please do not hesitate to contact our Technical Department: [info@victorianplumbing.co.uk](mailto:info@victorianplumbing.co.uk)**

**Shower enclosure should consist of:**

1	Half Height Shower Enclosure
2	Shower Curtain
3	Curtain Rail with Hooks, Gliders & Fixing Pack
4	Shower Enclosure Fixing Pack <small>(Your fixing pack may have parts over once your enclosure is assembled as this is a universal fixing pack)</small>



Secure the curtain rail into the wall brackets with the supplied nylon pins. Simply push the pin through the bracket into the holes pilot drilled into the curtain rail.

**! If you need to extract the pin use a small flat ended screwdriver!**



Mark position for the ceiling rose and fix to the ceiling using a suitable fixing (not supplied). Cut drop rod to length.



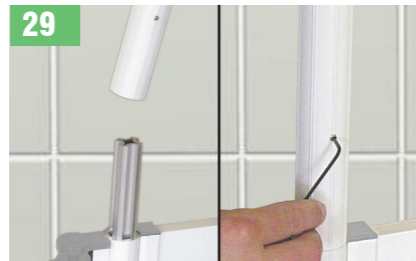
Secure drop rod into ceiling rose and rail connector into the top side of the curtain rail by tightening their respective fastening screws.



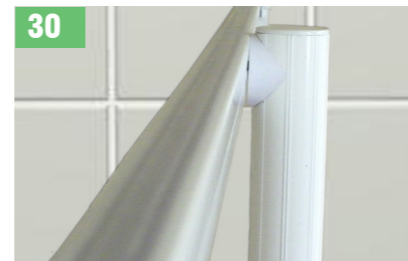
**Washers supplied to be used as spacers between panel & rail, see inset image below.**

**FULL HEIGHT FIXED PANEL:**  
Fix curtain rail to panel by placing rail against the top inside edge of the panel.

Drill a 3.5mm hole in panel top rail & post through curtain rail. Fix rail to panel with No8 x 25mm screws and caps and to post using No8 x 38mm screw, as in Step 31.



**WHERE VERTICAL SUPPORT POLE IS PRESENT:** With the curtain rail in position, guide the post extension over the post spigot and secure in position with the supplied grub screw.  
Depending on your enclosure type you will secure the post to the curtain rail or using a boomerang bracket.



It may be necessary to trim the top of the post extension so that it finishes flush with the top of your curtain rail.

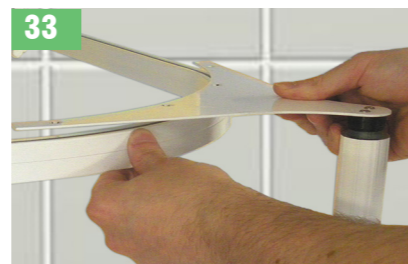
**! Any rough edges should be filed smooth!**



Ensuring the post is straight, pilot drill through both the curtain rail and post using a 3.0mm drill. Screw both together with a No8 x 38mm pan head screw and cap.



Make certain that the shaped plastic washer is fitted in between the post and the rail before fixing. Place the supplied post cap into the top of the post.



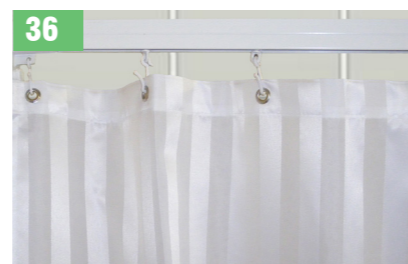
Place boomerang bracket in the top of the post, pilot drill holes in the rails top channel and fix to the post through the brackets pre-drilled holes.  
**REMOVE PLASTIC DUST COVER FIRST.**



Screw the boomerang bracket to the curtain rail using the No6 x 3/4" countersunk screws. **USE THE SCREWS PROVIDED.**



**IMPORTANT:** Seal all joints between compensators, walls, panels and shower tray or floor, on the inside and outside of the shower area using a waterproof, anti fungal silicone sealant.



Fit your shower curtain to the hooks and gliders on the curtain rail.

## DO



**READ** these instructions before starting your installation. These instructions will help with the fitting of your shower enclosure.



**POSITION** the complete enclosure roughly on the shower tray or showering area with the doors closed to judge where the enclosure is to be fitted.



It is **ESSENTIAL** all joints between compensators, walls, panels and shower tray, both sides, are silicone sealed and left to cure for 24 hours.

**24 HOURS**

## DON'T



We **DO NOT** approve the use of power showers with our shower trays.



**NO** responsibility will be accepted by the manufacturer for water leaks, or any other fault, if these instructions have not been followed.

**IMPORTANT:**  
The shower head should be positioned towards the users standing / sitting position and **NOT** towards the doors.

**IMPORTANT UPDATE:**

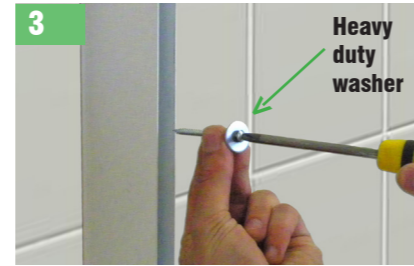
- **STEP 7 - 8**, Ensure the Hinge Locator is fitted to all rise & fall hinges.
- **STEP 16**, Ensure the top rise & fall hinge is glued into position when using a floor to ceiling pole.



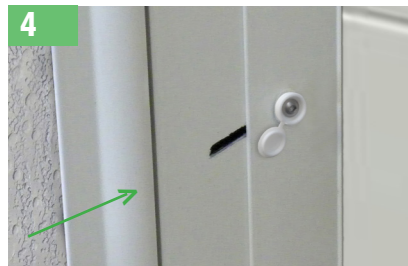
Place compensators against the wall ensuring that they rest on the flat area of the tray or floor at the position shown. Mark off fixing holes on the wall when level.



If fitting your enclosure on a wet floor, a corner block at the base of each compensator can be shaped at 10mm or 38mm radius to accept floor covering. Cut along the pre-formed indents.



Drill holes in the wall with a No10 masonry drill bit, insert wall plugs, and fix with the No8 x 50mm pan head wood screws and heavy duty washers provided.

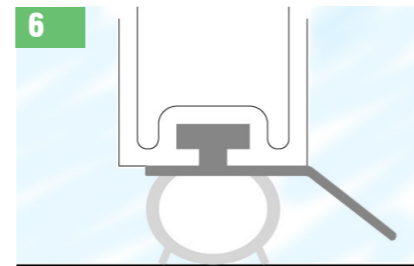


Offer door(s) / fixed panel into their respective compensator ensuring that the slots engage with the adjusting screws. Tighten adjusting screw with the supplied allen key. PLEASE NOTE, door options with a vertical support pole will have no compensator slots. **IF INSTALLING AN OPTION WITH A VERTICAL SUPPORT POLE PLEASE SEE STEPS 11 - 14.**



Fully close doors so that the magnetic profiles come together. Ensure they are parallel for the full height of the door(s).

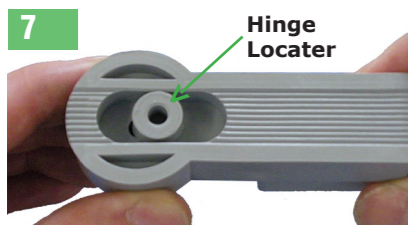
Adjust compensators for out of plumb walls and to obtain the correct position of doors relative to the tray or shower area.



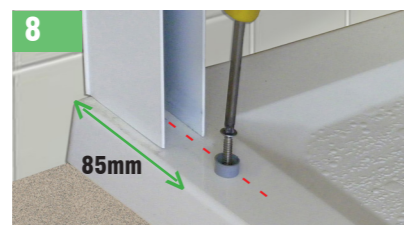
Ensure that the rubber seal on the bottom of the door(s) is slightly compressed against the tray surface or floor.

When you are happy, mark the door(s) position using a pencil.

**PLEASE ENSURE THE HINGE LOCATER IS FITTED,** see Points 7 & 8



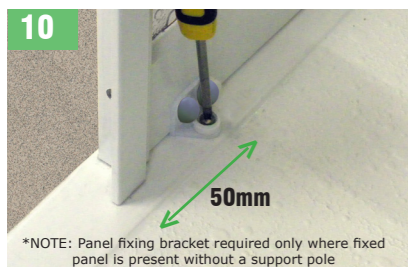
Our 2 part rise & fall hinge has been designed to make our doors more stable. The hinge locator screws to the tray or floor and will fit into the centre of the recess underneath the hinge, as demonstrated above.



Find the centre point between the compensator. Measure 85mm and pilot drill a 3mm hole. Fix hinge locator to the tray or floor with No8 x 25mm countersunk screw.



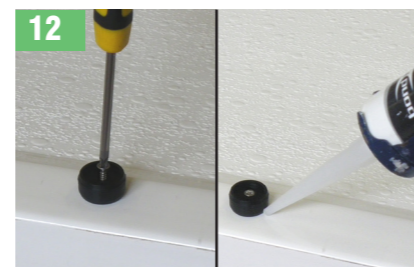
Offer the door(s) back into their respective compensators, re-align with the mark(s) you had previously made for the door position. **ENSURE** the compensator is fixed securely to the wall. Use the supplied hinge locator, FIG 7 & 8, if necessary for added rigidity.



Mark hole through the panel fixing bracket onto the tray or floor & bottom rail (when door and / or fixed panel are inline). Pilot drill and fix bracket in place using self tapping screws and grey caps provided.



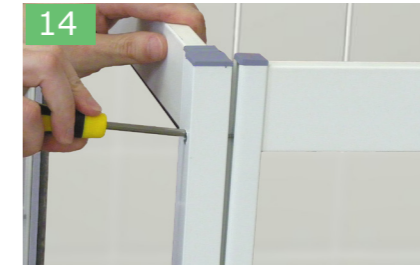
**OPTIONS WITH A VERTICAL SUPPORT POLE:** Insert the panel in the compensator as Step 4, mark around the post(s) to ascertain the location for the post block(s) when the panels are in the correct position.



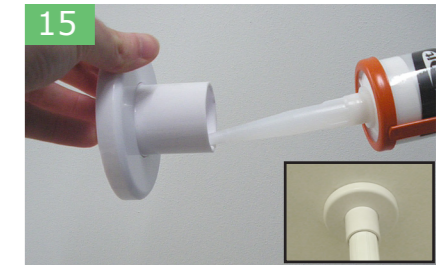
Find the centre point for the post block(s), pilot drill a 3mm hole. Fix block in position with a No8 x 25mm pan head screw. Use a small amount of silicone sealant around the post block(s) and re-fit panel assemblies in position. Fully tighten compensator adjusting screws to secure in position, as **Step 9.**



If fitting a post compensator, inline or off a return panel, place the compensator against the post and mark through the fixing slots. Find the centre of your mark and drill a 3.8mm dia hole. Fix in place with No8 x 25mm pan head self tapping screws. Offer door into post compensator as described in steps 4 to 8.



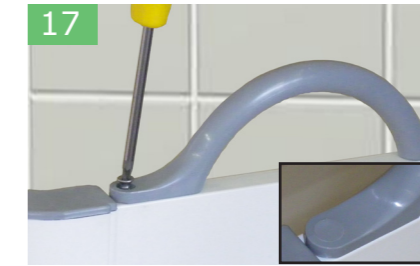
**OPTIONS WITH A SQUARE POST:** Carefully remove the screws from the side of fixed panel not attached to the square post. Now screw the fixed panel to the post through the pre-drilled holes in the square post. Push the supplied grey grommets into the posts holes to conceal the screws.



If fitting a floor to ceiling post, measure from the tray/floor to the ceiling. Deduct 30mm off your measurement and cut the post to this size. Apply a small amount of silicone sealant to the inside of the ceiling rose collar prior to fitting in place to reduce the amount of play once the post is secured. Ceiling rose has a push on cover to hide the screws.



**PLEASE ENSURE** when you have a door hinging from a floor to ceiling pole that the top hinge, found in the supplied screw pack, is secured into the door profile. Apply superglue down the hinges inside channel as shown above **before** fitting into the top of the door profile.

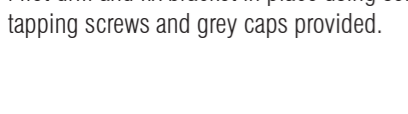


Place door handle(s) against the leading edge of the door(s) on the top rail. **Using a 3.0mm drill bit,** pilot drill the top rail and fix handle to the door with the countersunk self tapping screws. Fit blanking caps, see inset image.

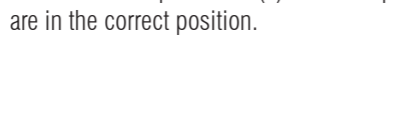
**PLEASE ENSURE** you use a 3.0mm drill bit when pilot drilling the doors top rail to accept the door handle.



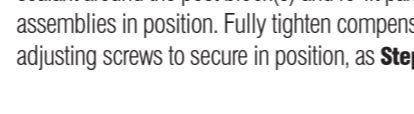
On completion of building the unit, fix the locking screws and caps into both sides of the compensators. Pilot drill two holes to the inside & two holes to the outside of the compensators & secure in position with the supplied pan head screws and grey cover caps, see inset.



Place panel support bracket against wall and just below the top edge of the top rail (Approx 5mm), on the inside of the enclosure. Mark & pilot drill holes on the rail & wall and fix the bracket in position with the supplied screws and cover caps.



Place compensator top caps on top of the compensator. It should 'click' positively in position.



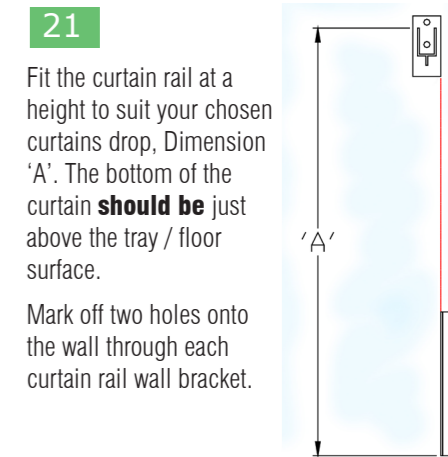
Fit the curtain rail at a height to suit your chosen curtains drop, Dimension 'A'. The bottom of the curtain **should be** just above the tray / floor surface. Mark off two holes onto the wall through each curtain rail wall bracket.



Place panel support bracket against wall and just below the top edge of the top rail (Approx 5mm), on the inside of the enclosure. Mark & pilot drill holes on the rail & wall and fix the bracket in position with the supplied screws and cover caps.



Fit the required amount of hooks and gliders to the underside of the curtain rail and the rail connector to the top side. **NOTE:** Rail connector used when rail is supported from the ceiling by a drop rod, see steps 26 to 27.



Place curtain rail into wall brackets. Mark holes onto curtain rail through wall bracket on both sides and pilot drill rail with a 4.5mm diameter drill.

**!** The bottom of the curtain should be just above the trays surface



Drill the wall with a No10 masonry drill, insert wall plugs and fix with 2" countersunk self tapping screws. Use the supplied blanking caps to cover the screw heads, see inset.

**!** Cut curtain rail to size, if required, with a hacksaw. Any rough edges should be filed smooth