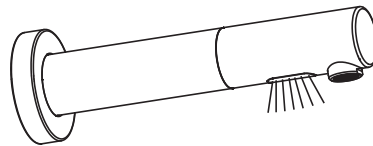


Product parameters:

Power	DC6V section No.5 alkaline battery
Power Consumption In Staic	≤ 0.5 mW
Indutive Distancae	10 ~ 14 cm
Suggest Water Pressure	0.5 ~ 5 Bar
Ambient Temperature	0.1 ~ 45°C
Water Temperatuer	0 ~ 70°C
Supply Pipe Size	G1/2"

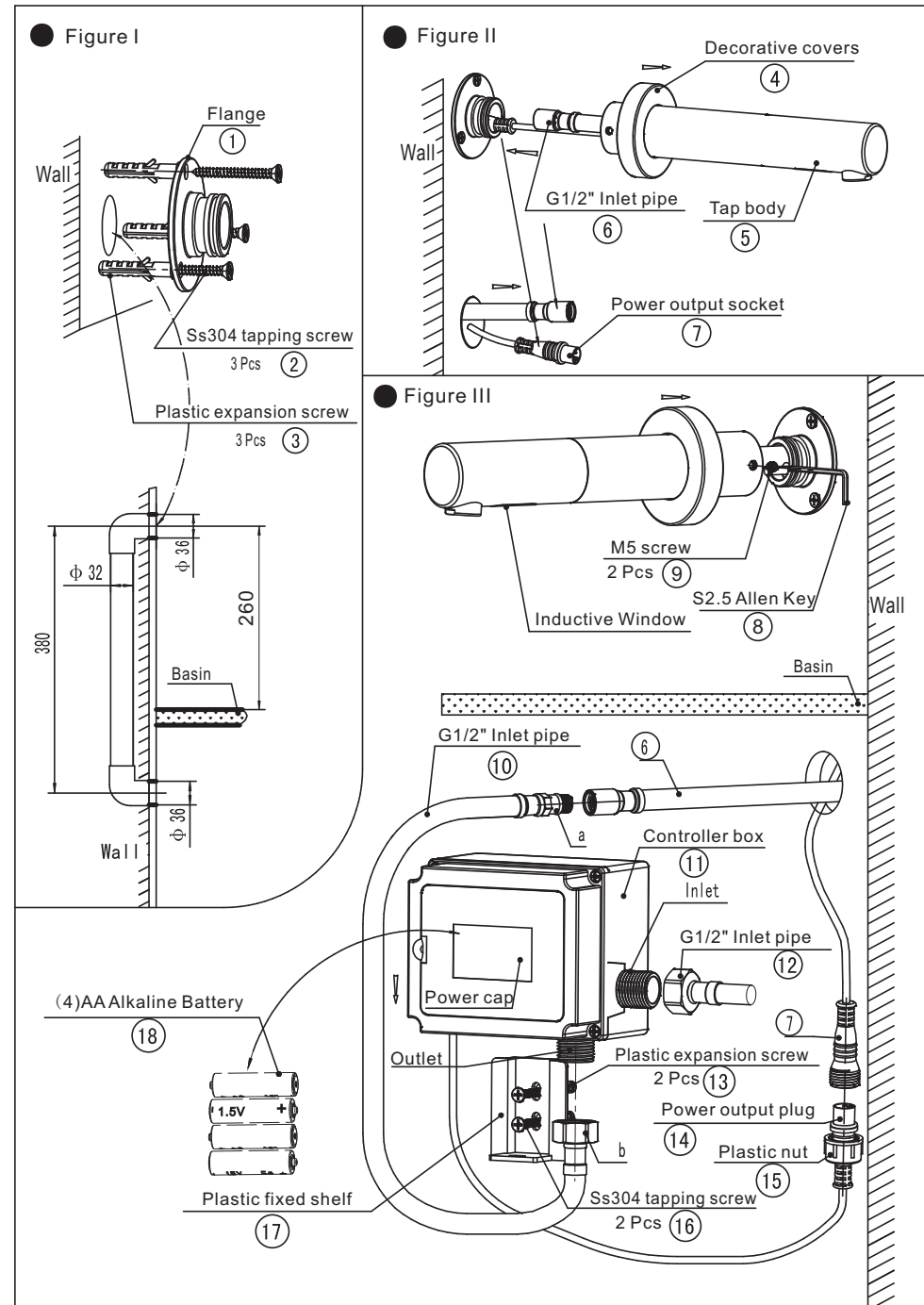


Operation Notice:

1. The following situation may occur filter impurities accumulation.
2. The product is used between water pressure 0.5-5Bar, water temperature 0-70°.
3. Regularly clean the surface of faucet in neutral wash solution.then dry it with a piece of soft cotton cloth to keep it bright.
4. Alkaline battery 1.5V No.5 used.

Installing steps(Figure I).

- 1, Embedded plastic elbow and straight pipe in the wall, then decorate the wall (note to leave 2- $\phi 36$ holes at the wall of plastic elbow) (Figure I).
- 2, Install the three plastic expansion screws into the wall, then fix the flange 1 on the wall by three SS304 tapping screws 2 (note the position).
- 3, Put the cover 4 on the tap body 5, then power output socket 7 & G1/2" Inlet pipe 6 pass through the flange hole, and pull out from the hole of wall. (Figure II).
- 4, Put the tap body 5 on the flange, and use S2.5 Allen Key 8 fix the tap body by two M5 screws 9, then the cover put on the flange. (Figure III).
- 5, Open the power box and load 4pcs Alkaline Batteries 18 (user prepare the battery).
- 6, The a side of G1/2" Inlet pipe 10 connect with inlet pipe 6, b side connect with the outlet joint of controller box 11. Then 7 connect with 14 (note the position of 4 holes), locked by plastic nut 15.
- 7, Two plastic expansion screw 13 installed into the wall, then firm the plastic fixed shelf 17 by two SS304 tapping screws 16 (note the position and height), Put controller box 11 into Plastic fixed shelf 17.
- 8, One side of G1/2" Inlet pipe 12 connect with the inlet joint of controller box 11, other side connect with inlet valve.
- 9, Turn on water to check, check all the joints to make sure there is no leaks.

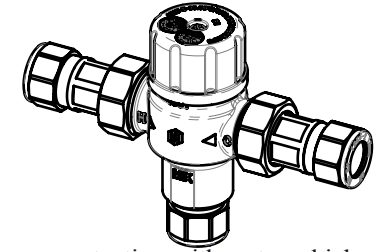
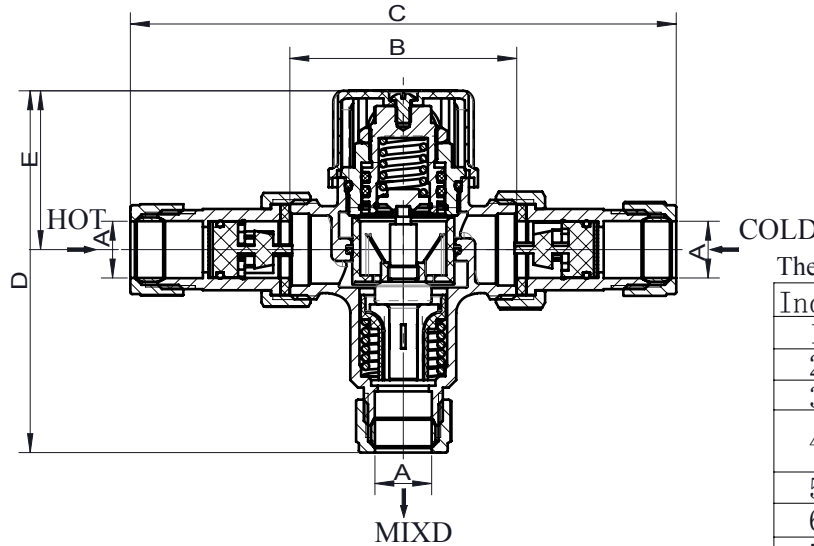
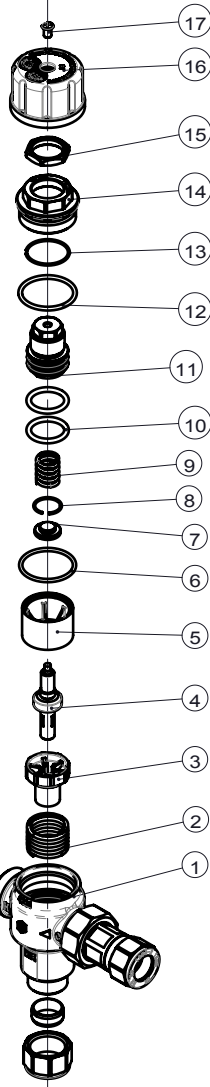
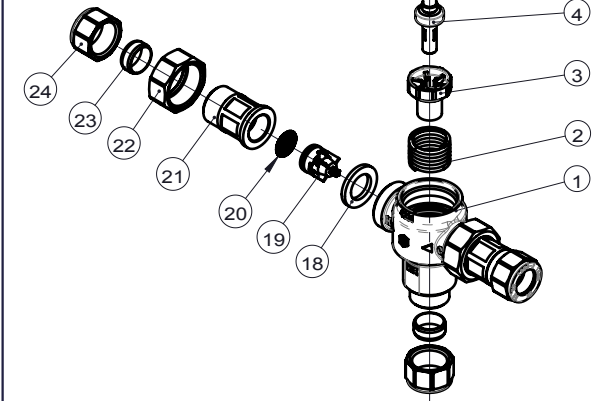


Victorian Plumbing

Diamond House.41, Stephenson Way. Formby Business Park Formby. England. L37 8EG

Tel: 0044 800 862 0878

Website: www.victorianplumbing.co.uk



The below parts are contacting with water which are noted by *

Index	Part name	Material	QTY
1	*valve body	CW602N	1
2	*spring	SUS304	1
3	*water flow directors	PSU	1
4	*thermostat	Subassembly	1
5	*piston	PSU	1
6	*O-ring	EP7118F	1
7	*block	CW602N	1
8	*circlip	SUS304	1
9	*spring	SUS304	1
10	*O-ring	EP7118F	2
11	*stem	CW602N	1
12	*o-ring	EP7118F	1
13	*circlip	SUS304	1
14	*bonnet	CW602N	1
15	Lock nut	CW617N	1
16	cap	ABS	1
17	screw	SUS201	1
18	*gasket	EP7118F	2
19	*check valve	acetal	2
20	*strainer	SUS304	2
21	*connect pipe	CW602N	2
22	union nut	CW617N	2
23	*compression olive	T2	3
24	union nut	CW602N	3

Performance

1. Cold water supply temperature: 5°C ~ 20°C
2. Hot water supply temperature: 56°C ~ 65°C
3. Temperature adjustment range: 30°C ~ 46°C
4. The thermostatic controller is supplied factory pre set at 42°C.
5. Accuracy of outlet temperature: ±2°C
6. Minimum temperature differential: 12°C (between hot supply and outlet temperature)
7. Supply pressure, static: 10bar
8. Supply pressure, dynamic: 5bar
9. Supply pressure imbalance dynamic: 2:1
10. Flow rate minimum: 4litres/min
11. Valve Specifications: ø15mm&ø22mm

Model	DN Size	A	B	C	D	E
24001158000	ø15	ø15	60	144.5	97	43
24001228000	ø22	ø22	63	157.5	99	43


4001

DWG.NO :	24001158003	EDITION	
	24001228003		A

TOLERANCE UNLESS DIMENSION GB/T 1804-m	(mm)	[d\X] [d\Q]	R^JRT] ca\XR\ch
≤6	±0.1		Φ0.3
> 6~30	±0.2		
> 30~120	±0.3		
> 120~400	±0.5		

Mark	Times	Mod.No.	Signature	Date
DRAWN		Radman		2014. 11. 05
CHECKED		XGW		2014. 11. 05
PROCESSOR		LWF		2014. 11. 05
STANDARDIZATION		YSY		2014. 11. 05
APPROVED		YSY		2014. 11. 05

TITLE :	Thetmostatic Mixing Valve
MATERIAL:	

PROJECTION MEANS	PRIMO ANGLE	<input checked="" type="checkbox"/>	DRAWING UNIT	mm
DESIGN SIGN	G.W.	N.W.	SCALE	
S A B	PAGE			OF
 YORHE 永和股份 Yorhe Fluid Intelligent Control Co.,LTD				

注:1、本图纸盖有样品章的只用于样品开发,不应用于正式生产。2、本图纸盖有受控章的,应用于正式生产。3、本图纸没有盖章为无效图纸。