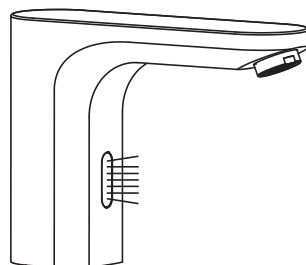


Product parameters:

Power	DC6V section No.5 alkaline battery
Power Consumption In Static	≤ 0.5 mW
Inductive Distance	10 ~ 14 cm
Suggest Water Pressure	0.5 ~ 5 Bar
Ambient Temperature	0.1 ~ 45°C
Water Temperature	0 ~ 70°C
Supply Pipe Size	G1/2"



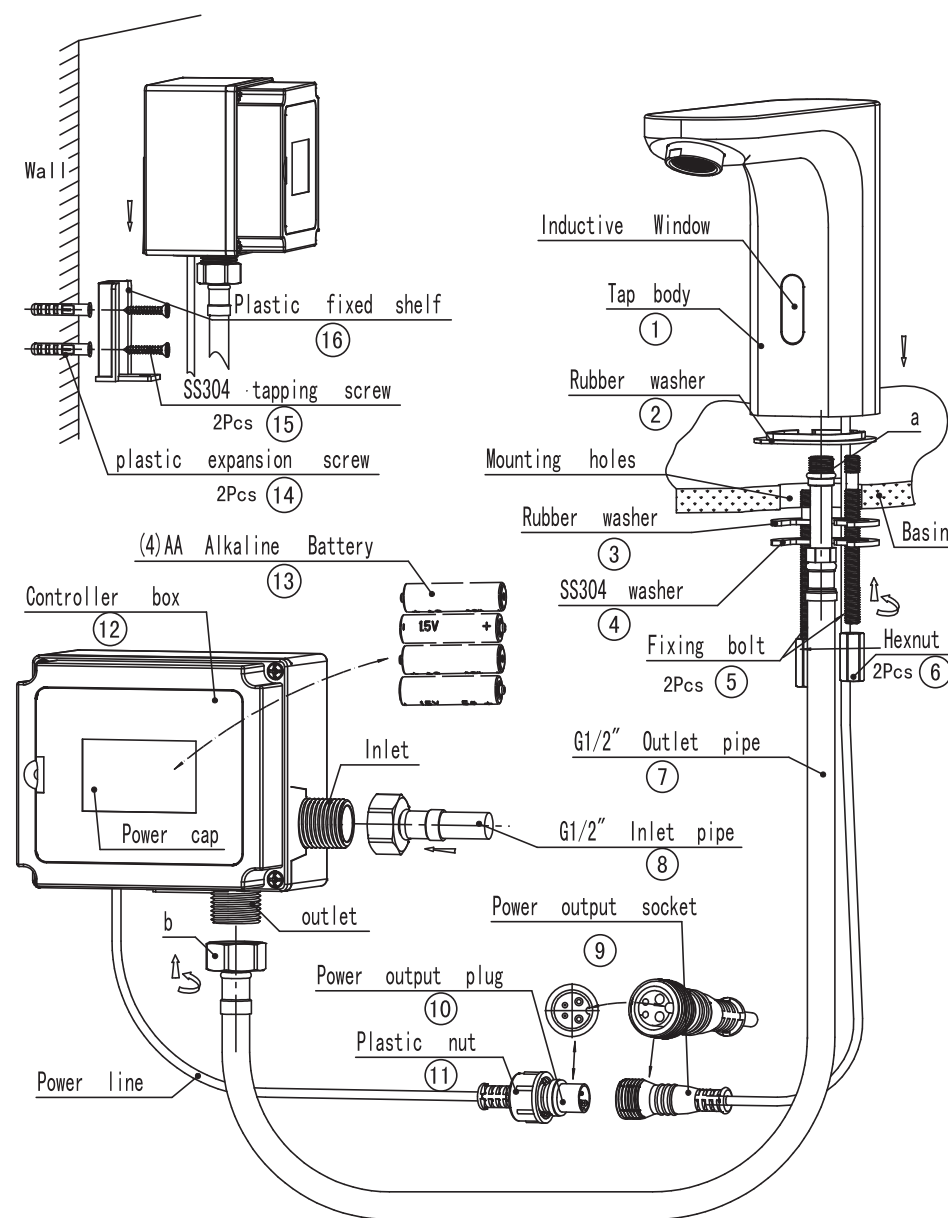
Operation Notice:

1. The following situation may occur filter impurities accumulation.
2. The product is used between water pressure 0.5-5Bar, water temperature 0-70°.
3. Regularly clean the surface of faucet in neutral wash solution. then dry it with a piece of soft cotton cloth to keep it bright.
4. Alkaline battery 1.5V No.5 used.

Installing steps(Figure I).

- 1, The a side of inlet pipe 7 install into the inlet hole of tap body 1.
- 2, The two fixing bolts install into the M6 screw hole of tap body.
- 3, The inlet pipe 7 & Power output socket 9 pass through the rubber washer 2 and mounting hole of basin, then put the tap body over the basin mounting hole.
- 4, The parts 3 , 4 pass through the two fixing bolts 5 , then the tap body locked by the two copper nuts. (note the direction and position of the tap body).
- 5, Open the power box and load 4pcs Alkaline Batteries 13 (user prepare the battery).
- 6, The b side of G1/2" outlet pipe 7 connect with the outlet joint of controller box 12, Power output socket 9 connect with power outlet plug 10 (note the position of four holes). Then lock these two parts by plastic nut 11.
- 7, Two plastic expansion screw 14 installed into the wall, then firm the plastic fixed shelf 16 by two SS304 tapping screws 15. (not the position and height). Put the controller box 12 into plastic fixed shelf 16.
- 8, One side of G1/2" inlet pipe 8 connect with the inter joint of controller box 12, and other side connect with inter valve.
- 9, Turn on water to check, check all the joints to make sure there is no leaks.

● Figure I

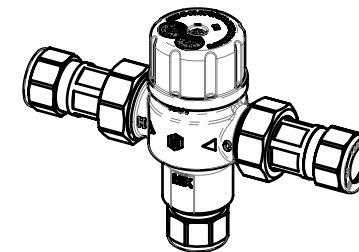
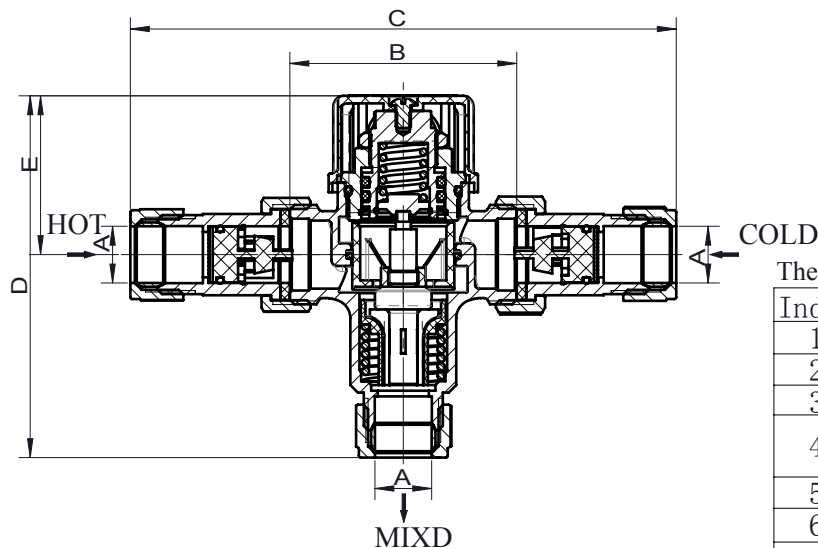


Victorian Plumbing

Diamond House.41, Stephenson Way. Formby Business Park Formby. England. L37 8EG

Tel: 0044 800 862 0878

Website: www.victorianplumbing.co.uk



The below parts are contacting with water which are noted by *

Index	Part name	Material	QTY
1	*valve body	CW602N	1
2	*spring	SUS304	1
3	*water flow directors	PSU	1
4	*thermostat	Subassembly	1
5	*piston	PSU	1
6	*O-ring	EP7118F	1
7	*block	CW602N	1
8	*circlip	SUS304	1
9	*spring	SUS304	1
10	*O-ring	EP7118F	2
11	*stem	CW602N	1
12	*o-ring	EP7118F	1
13	*circlip	SUS304	1
14	*bonnet	CW602N	1
15	Lock nut	CW617N	1
16	cap	ABS	1
17	screw	SUS201	1
18	*gasket	EP7118F	2
19	*check valve	acetal	2
20	*strainer	SUS304	2
21	*connect pipe	CW602N	2
22	union nut	CW617N	2
23	*compression olive	T2	3
24	union nut	CW602N	3

Performance

- 1.Cold water supply temperature: 5°C ~ 20°C
- 2.Hot water supply temperature: 56°C ~ 65°C
- 3.Temperature adjustment range: 30°C ~ 46°C
- 4.The thermostatic controller is supplied factory pre set at 42°C.
- 5.Accuracy of outlet temperature: $\pm 2^{\circ}\text{C}$
- 6.Minimum temperature differential: 12°C
(between hot supply and outlet temperature)
- 7.Supply pressure,static: 10bar
- 8.Supply pressure,dynamic: 5bar
- 9.Supply pressure imbalance dynamic: 2:1
- 10.Flow rate minimum: 4litres/min
- 11.Valve Specifications: $\phi 15\text{mm}\&\phi 22\text{mm}$

Model	DN Size	A	B	C	D	E
24001158000	$\phi 15$	$\phi 15$	60	144.5	97	43
24001228000	$\phi 22$	$\phi 22$	63	157.5	99	43

4001

DWG.NO : 24001158003
24001228003

EDITION

A

TITLE :

Thetmostatic Mixing Valve

MATERIAL:

See above table

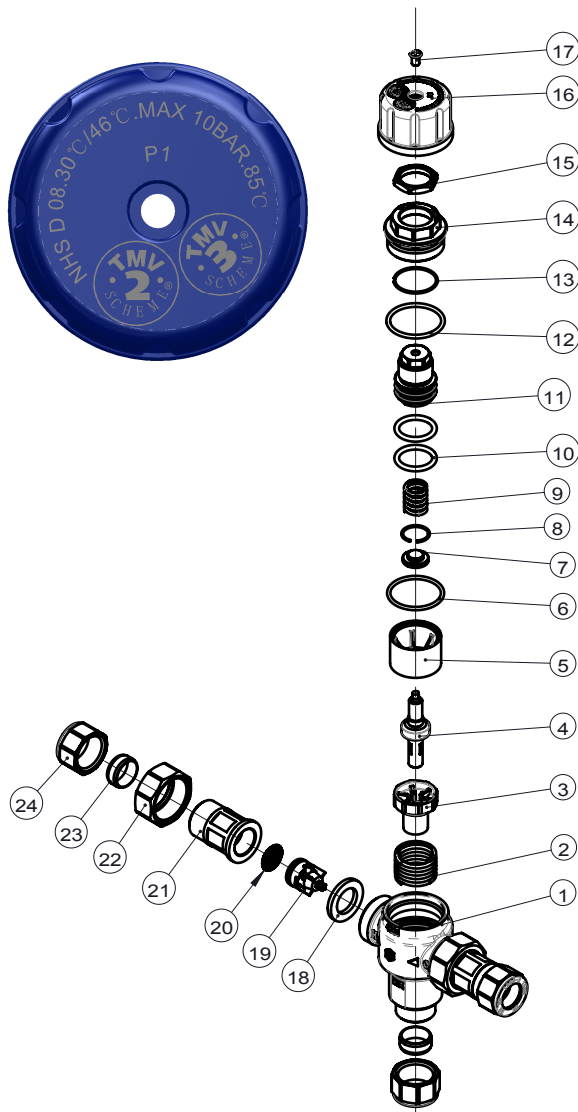
PROJECTION MEANS PRIMO ANGLE DRAWING UNIT mm

DESIGN SIGN G.W. N.W. SCALE

S A B PAGE OF

YORHE 永和股份

Yorhe Fluid Intelligent Control Co.,LTD



TOLERANCE UNLESS DIMENSION GB/T 1804-m	(mm)	R^JRTJ caXRXch	Mark	Times	Mod.No.	Signature	Date
≤ 6	± 0.1	± 0.1	DRAWN	Radman	2014. 11. 05		
$> 6 \sim 30$	± 0.2		CHECKED	XGW	2014. 11. 05		
$> 30 \sim 120$	± 0.3		PROCESSOR	LWF	2014. 11. 05		
$> 120 \sim 400$	± 0.5		STANDARDIZATION	YSY	2014. 11. 05		
			APPROVED	YSY	2014. 11. 05		

注:1、本图纸盖有样品章的只用于样品开发,不应用于正式生产。2、本图纸盖有受控章的,应用于正式生产。3、本图纸没有盖章为无效图纸。