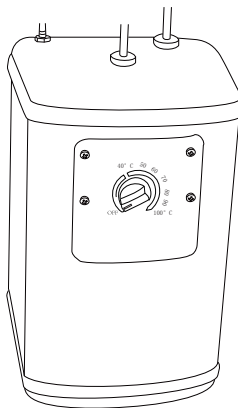
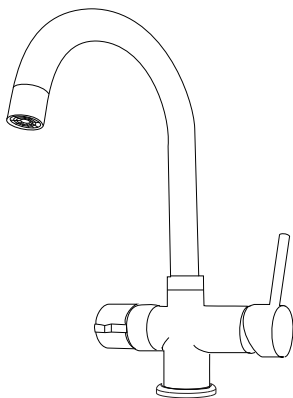
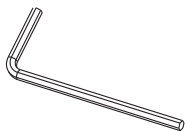


# Installation Instruction

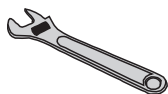
## Instant Boiling Water System



### Tools required



Allen wrench (2.5mm)



Monkey wrench



Pipe tape



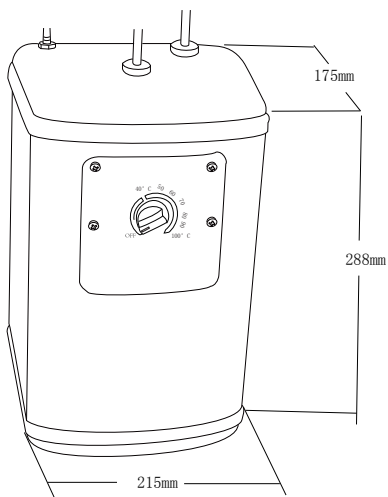
Scissors

### Caution

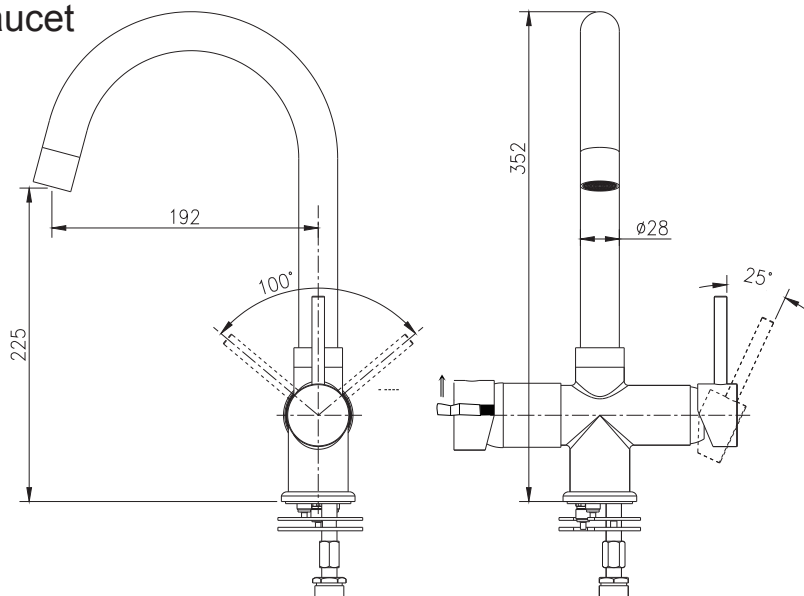
Before connecting to the power source, the dispenser must be filled with water and the thermostat turned to be the OFF position.

# Product Dimension Drawing

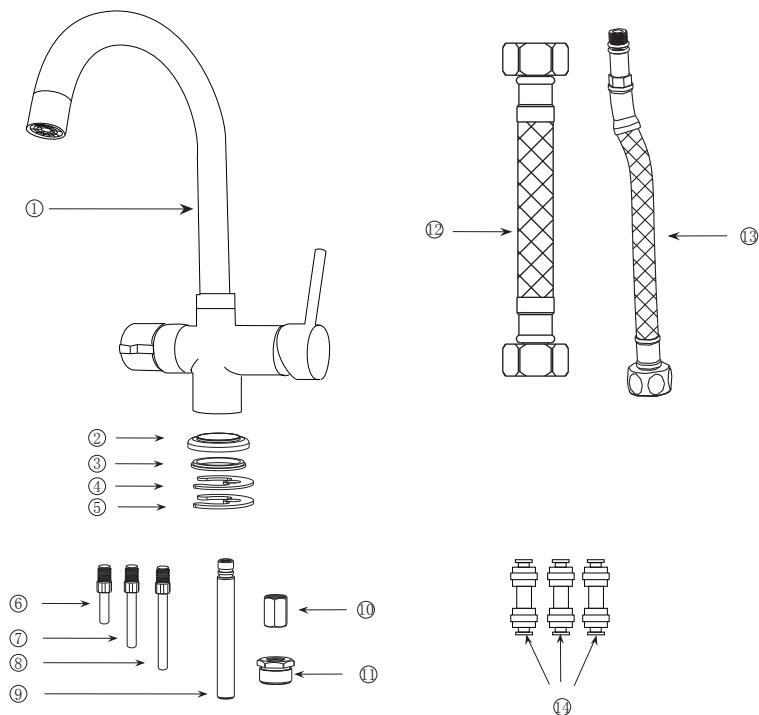
Tank



Faucet



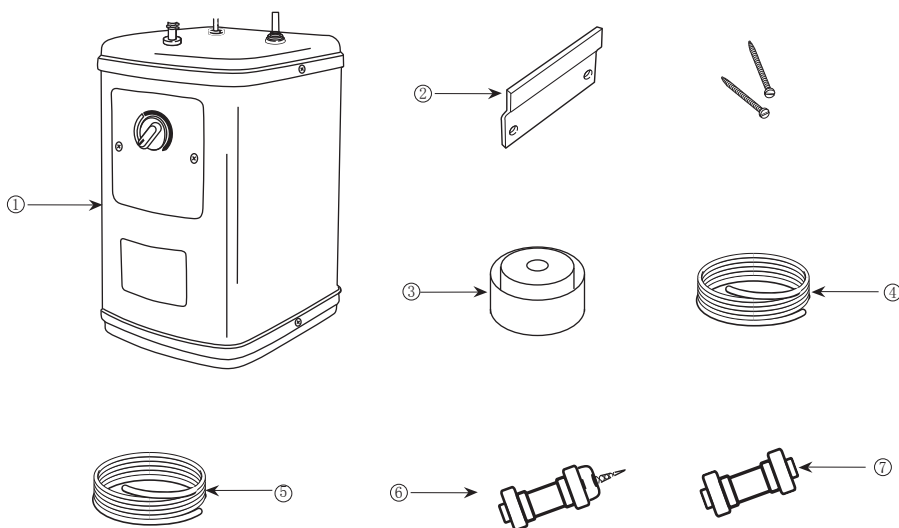
# Accessories Description (Faucet)



- ①:Tap      ②:Plinth      ③:Seal      ④:Metal Gasket      ⑤:Metal Gasket
- ⑥:Stainless steel quick pipe(Filtered water in )
- ⑦:Stainless steel quick pipe(Filtered water out)
- ⑧:Stainless steel quick pipe(Boiling water from tank)
- ⑨:Water inlet pipe(Cold water in)      ⑩:Nut      ⑪:Connector
- ⑫:1/2 Hose (for cold water)
- ⑬:1/2 Hose (for hot water)
- ⑭:Adaptor (connect with ⑥ ⑦ ⑧ )

# Accessories Description

## (Water Heater Tank)



### Components

When you purchase the instant hot water tank, contents include:

- ① :Instant Hot Water Tank
- ② :Tank mounting bracket, 2 mounting bracket screws(and 2 plastic anchors if attaching to drywall),(optional)
- ③ :Black drain plug(connect to drain pipe with silicon steam pipe)
- ④ :1/4(6.4mm) Push fit tube(white)
- ⑤ :1/4(6.4mm) Clear silicon hose(According to the actual situation, cut into 2 sections, one for boiling water, and the other for steam)
- ⑥ :Quick-connect fitting with filter and cap
- ⑦ :Quick-connect fitting

# INSTALLATION

## Step 1 - Mounting Tank

- 1: Tank mounting bracket is fixed on the wall, as shown in Figure 1.  
(The tank can also rest on the floor if there is enough space)
- 2: Hang tank on bracket ,as shown in Figure 2.(optional)

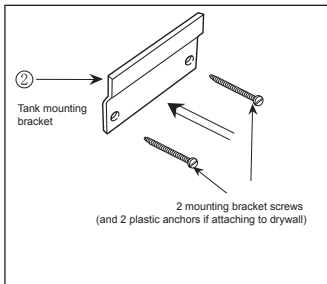


Figure 1

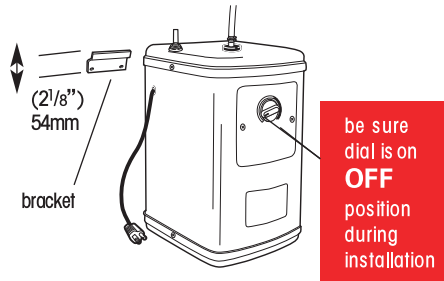


Figure 2

- 3: Cut the clear silicon hose(parts ⑤ ) into 2 sections ,one for boiling water, and the other for steam.
- 4: Cut the Push fit tube hose(parts④ ) into 2 sections ,one for filtered water , and the other connect with filter .
- 5: Black drain plug(connect with drainpipe), as shown in Figure 3.

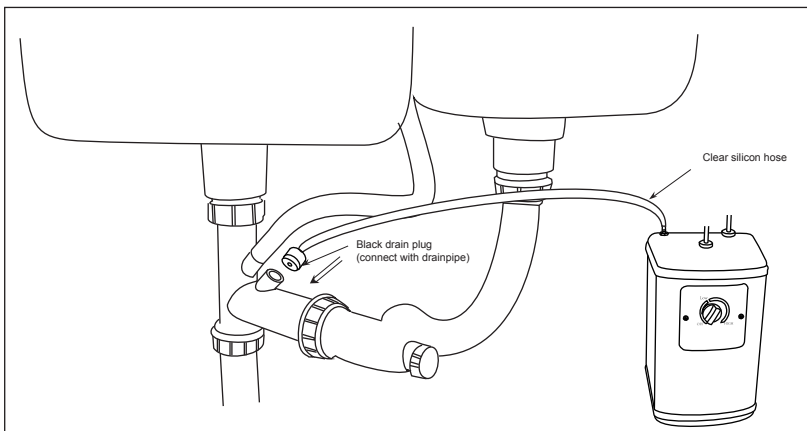
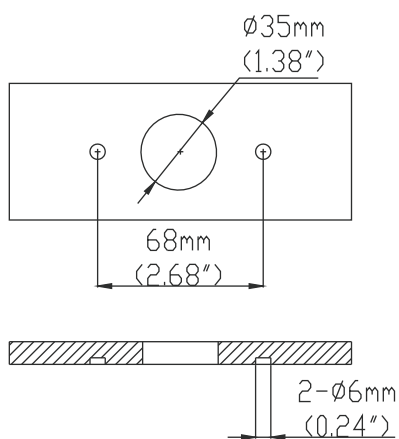
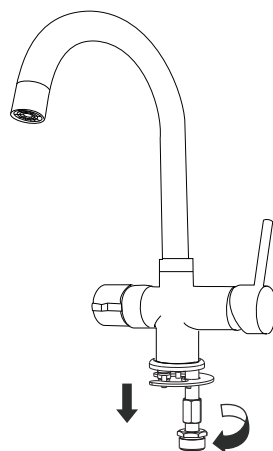


Figure 3

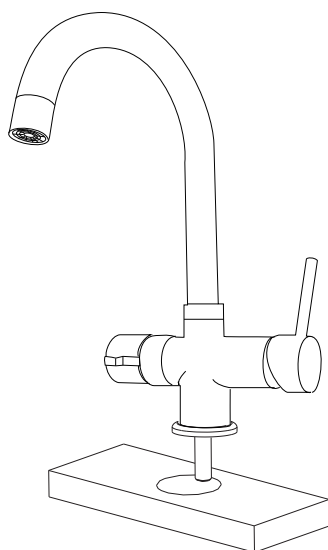
## Step 2 - Install Boiling Water Faucet



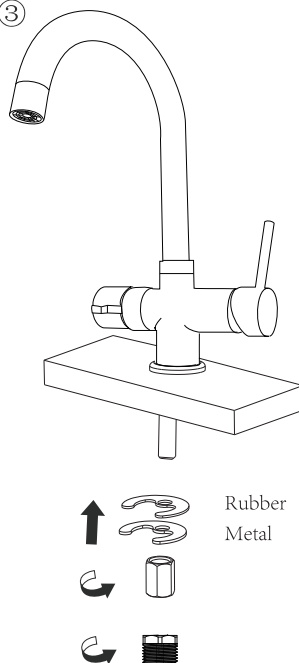
### Step ①



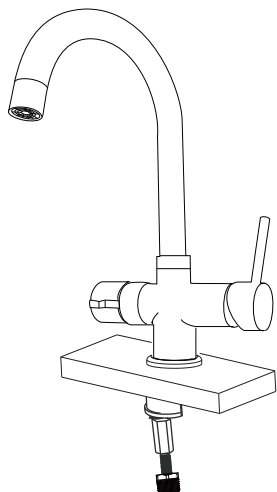
### Step ②



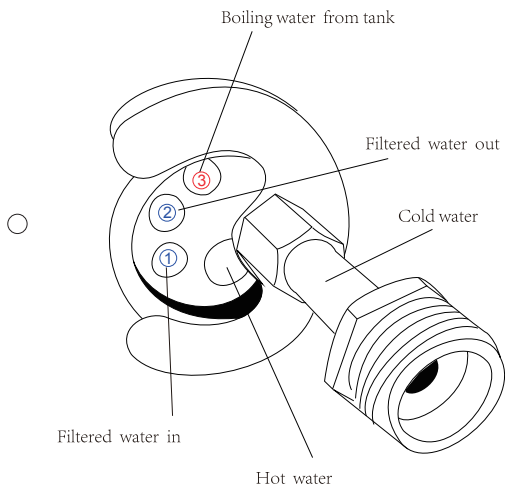
### Step ③



## Step ④



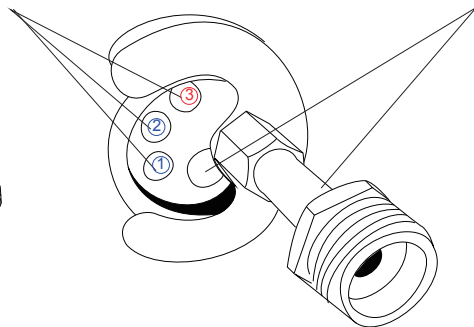
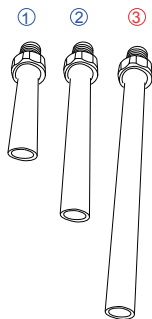
## Step ⑤



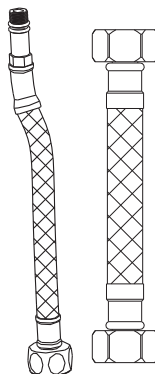
## Faucet Bottom

## Step ⑥

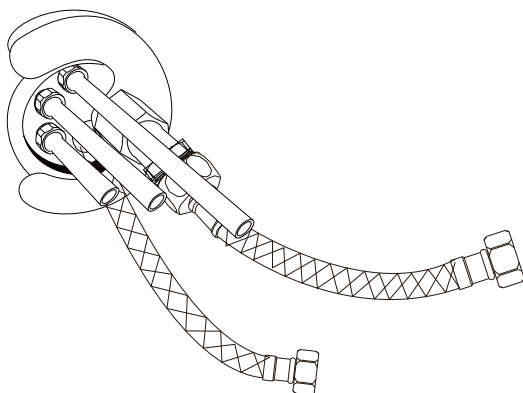
connect with  
stainless steel quick pipe  
following the numbers



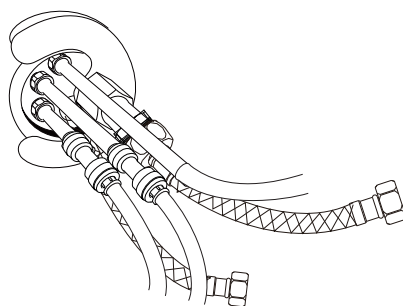
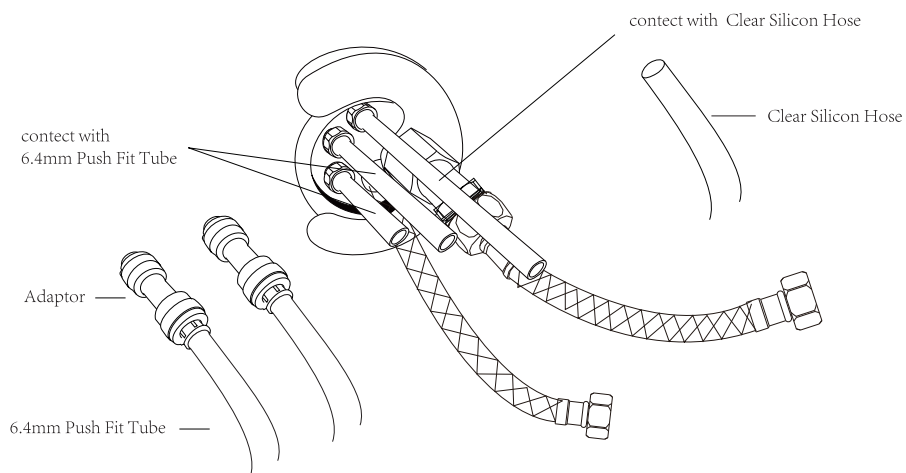
connect with 1/2 tube



## Step ⑦



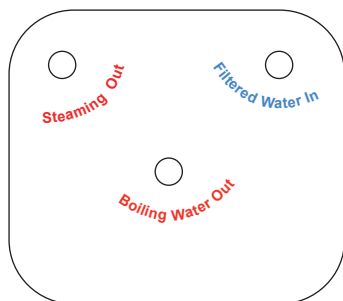
## Step ⑧



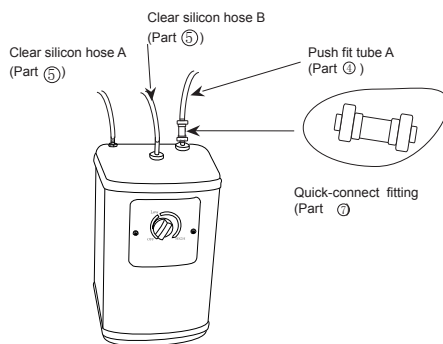


## Step 3 - Connect Faucet to Tank

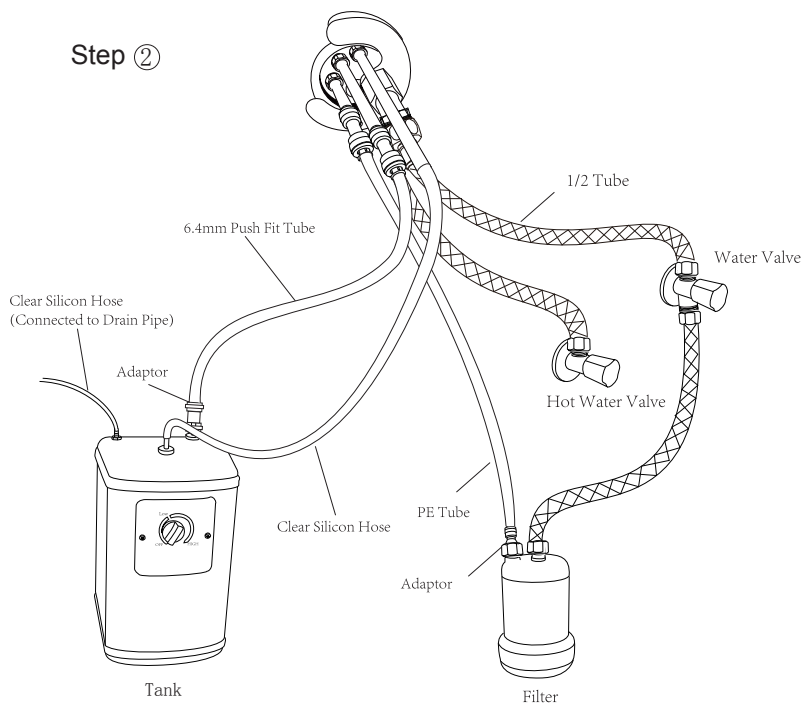
### Step ①



Tap of tank



### Step ②



## Step 4 - Check For Leaks

- 1: Open valve in water line.
- 2: Turn faucet on (hold if necessary) to fill tank (about 1 minute). When tank is full, water will flow from faucet, as shown in Figure 4.
- 3: Turn faucet off. Check for leaks.

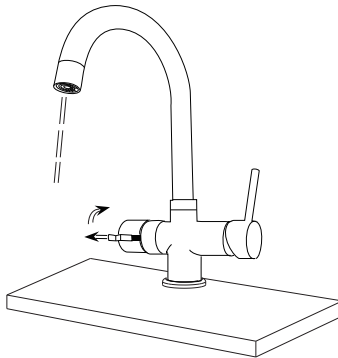


Figure 4

## Step 5 - Prepare For Test

- 1: Plug electrical cord into a grounded 3-prong outlet.
- 2: Turn thermostat dial clockwise to the 100 °C, 100°C will be reached in about 10 minutes, as shown in Figure 5.

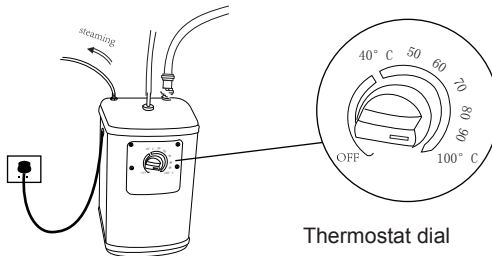


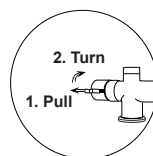
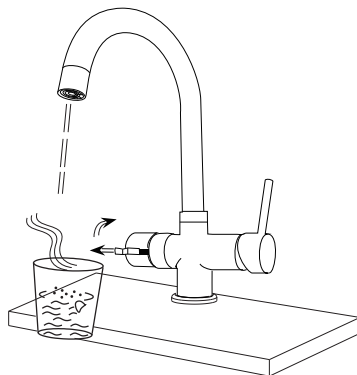
Figure 5

## Step 6 - Test Installation



### Caution:

The temperature of the water is 98°C therefore care should be taken to avoid scalding!



### Child safety

The tap is fitted with a childproof control knob which requires a pull and turn action to operate it.

