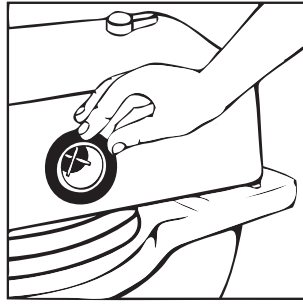
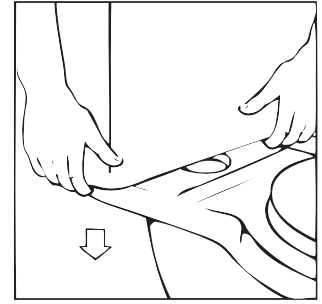


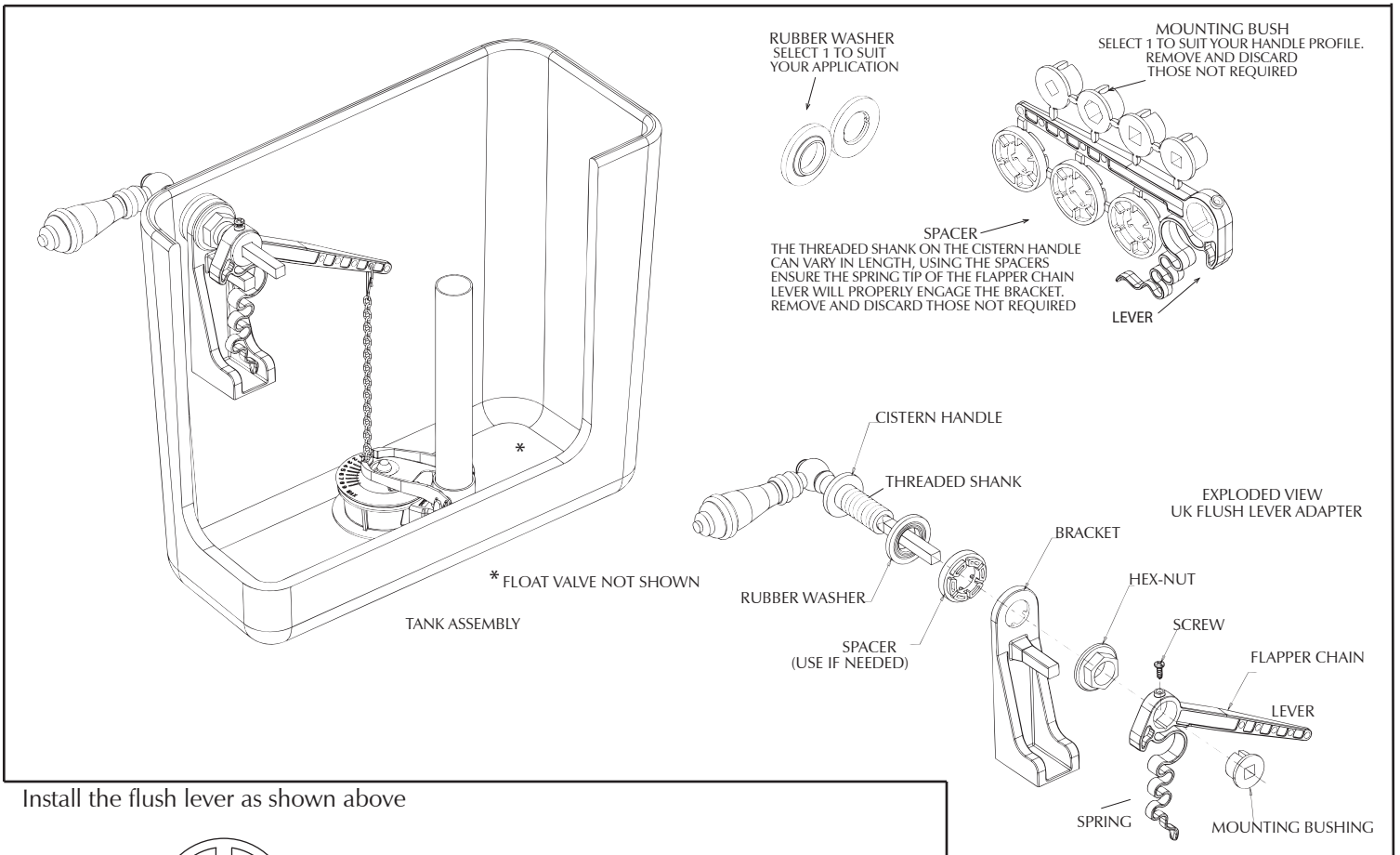
Install the flap valve into the cistern, slide on coupling plate and tighten the back nut.



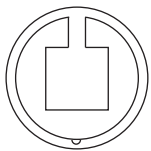
Place the Donut washer over the tail of the valve.



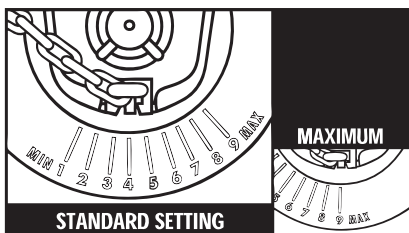
Locate the cistern onto the WC and tighten bolts to secure the cistern in place. Ensure that nuts are not overtightened as this could crack the ceramic.



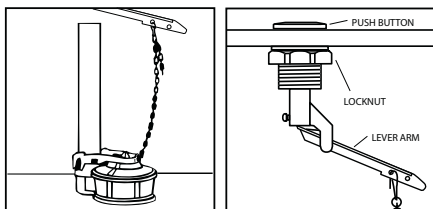
Install the flush lever as shown above



When installing the Radcliffe CC WC the correct mounting bush is the 90 degree component as shown left. No spacer is required.



Imperial recommend that the valve setting should be turned to maximum. This will ensure that the WC pan performs at its best by delivering the correct amount of water into the pan.



When attaching the chain ensure to the lever arm ensure that it is positioned directly above the flapper. The chain should have a slight slack when the flapper is closed.

NOTE: If the chain is too tight the flapper will stay open slightly and leak. If chain is too slack, it will not lift properly for a complete flush.