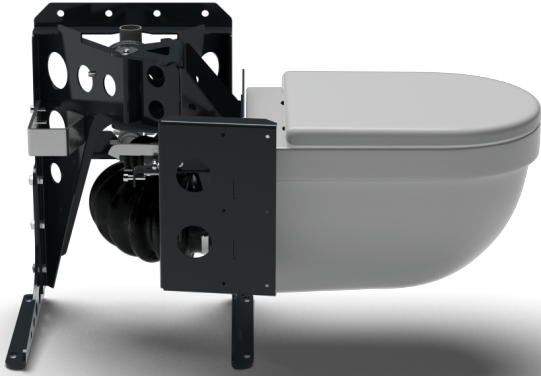


# SPECIFICATION DETAILS

---



## HIDEALOO

---

- A folding mechanism to which any standard wall hung toilet pan and cistern can be attached.

## COMPONENTS

---

- Main frame made in steel with a powder coated grey 7016 finish.
- Lock made in heavy duty steel and zinc plated.
- Flexible water inlet and waste outlet pipes are developed from an industrial marine grade PVC which is designed for harsh environment applications.

## DIMENSIONS

---

- 500mm wide, 420mm deep and 580mm high

## WEIGHT

---

- 23kg

## LOAD BEARING

---

- Maximum 400kg, normal operation recommended at 250kg.

## SWIVEL ACTION

---

- Opening and closing controlled by the cabinet door or a handle (depending on model).
- Hidealoo moves around a swivel bearing design.
- The mechanism has been through years of testing including continuous cyclic swivel testing of the full movement of over 250,000 times.

**The Hidealoo mechanism folds a wall hung toilet pan into a cabinet or cavity space to create the best and most flexible use of small spaces.**

## PIPEWORK

---

- Pipework meets all relevant standards, including:
- Pressure tested to 500mm of water head. This is equivalent to the loo pan flooded twice as high as its own top rim - a practical impossibility, but a standard requirement.
- Cyclic movement when full of water.
- Waste matter flow rate.
- Age stress testing of 78oC for 168 hours.

## CABINET

---

- Not supplied.
- Hidealoo designed to fit in off the shelf kitchen or bathroom cabinets to match customer décor choice or to fit in a bespoke cabinet to fit a specific installation space.
- Standard minimum cabinet design 1100mm wide, 450mm deep and 900mm high.
- A smaller compact version is available but requires a bespoke cabinet. Minimum size being 930mm wide, 450mm deep and 900mm high.

## SWIVEL ORIENTATION

---

- Hidealoo can be set to open and close in either orientation.
- Units are supplied right swinging, so open from left to right when looking at the unit.
- Simple instructions are supplied to change the open/close orientation which takes 20 minutes.

## PLUMBING CONSIDERATIONS

---

- The mains waste pipe can be set to exit the unit from the rear, the floor, or the side as per the following illustrations.
- The mains waste pipe doesn't need to be precisely set but the final position must ensure the flexible Hidealoo waste pipe only moves in a single plane.
- The Hidealoo waste pipe must not be forced to twist as this could shorten its life span.
- The flush water cistern can rest on top of the Hidealoo frame as per the illustrations, or it can be remote mounted to suit the installation.

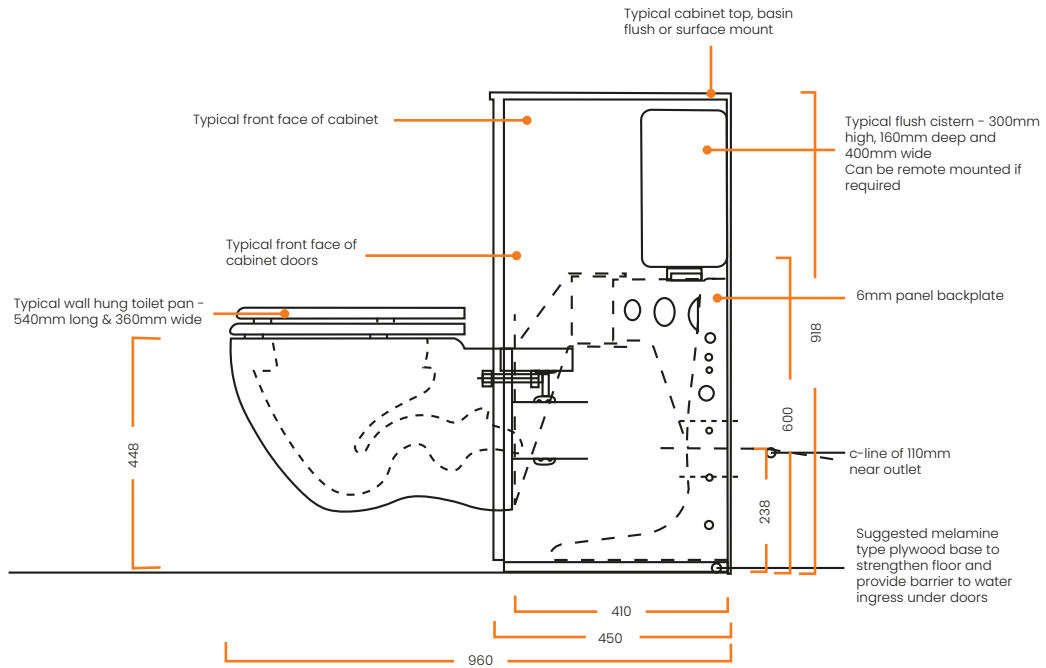
## MANUFACTURE

---

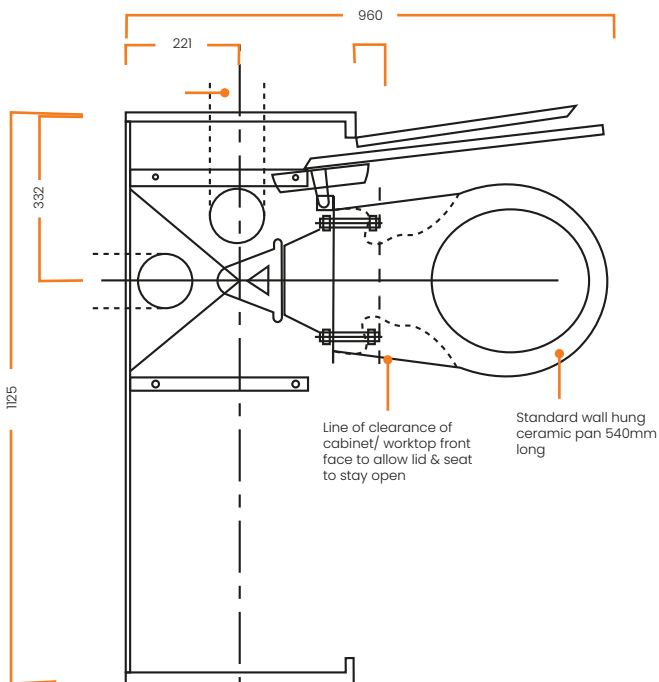
- Designed and manufactured in Great Britain.

# SPECIFICATION DETAILS

## SIDE VIEW – PAN DEPLOYED



## DEPLOYED



## RETRACTED

