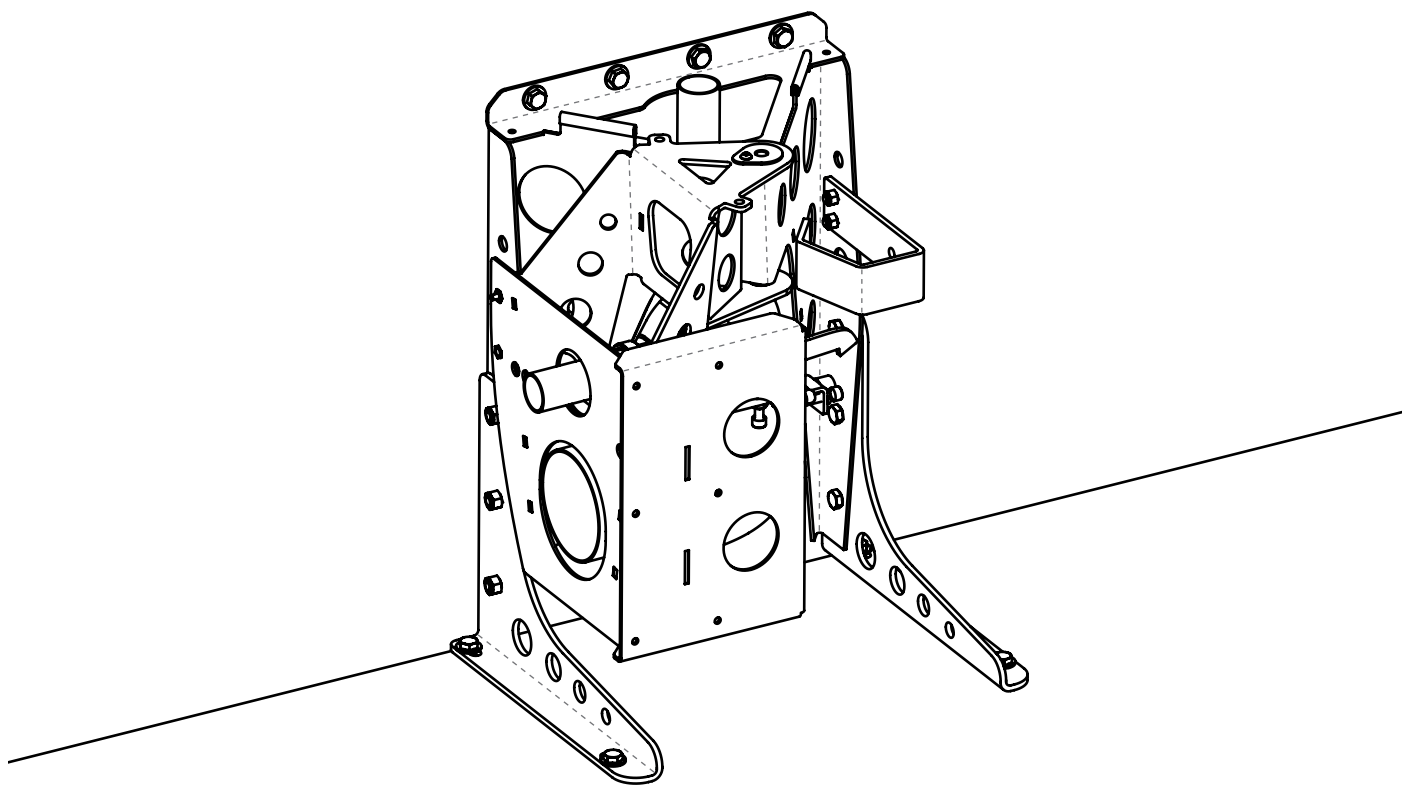


INSTALLATION MANUAL



INDEX

Pages 2-8.....	Hidealoo Unit Installation
Page 9.....	Wall Anchoring with Standard built-in Frame
Page 10.....	Conversion to Floor Exit Waste
Page 11.....	Conversion to Side Exit Waste

Hidealoo PARTS

- Hidealoo Unit
- Plastic Pan Support Packer
- MDF Template

SELF-SOURCED PARTS

- Toilet pan and fixing studs/washers/ bushes/nuts
- Pan connector adapter pipe
- Concealed Flush Cistern - Low height (290mm) side entry - 50mm output pipe size and standard 44mm pan connecting grommet
- Surrounding cabinet and doors
- 5x T25 Torx Screws

For masonry floor and walls

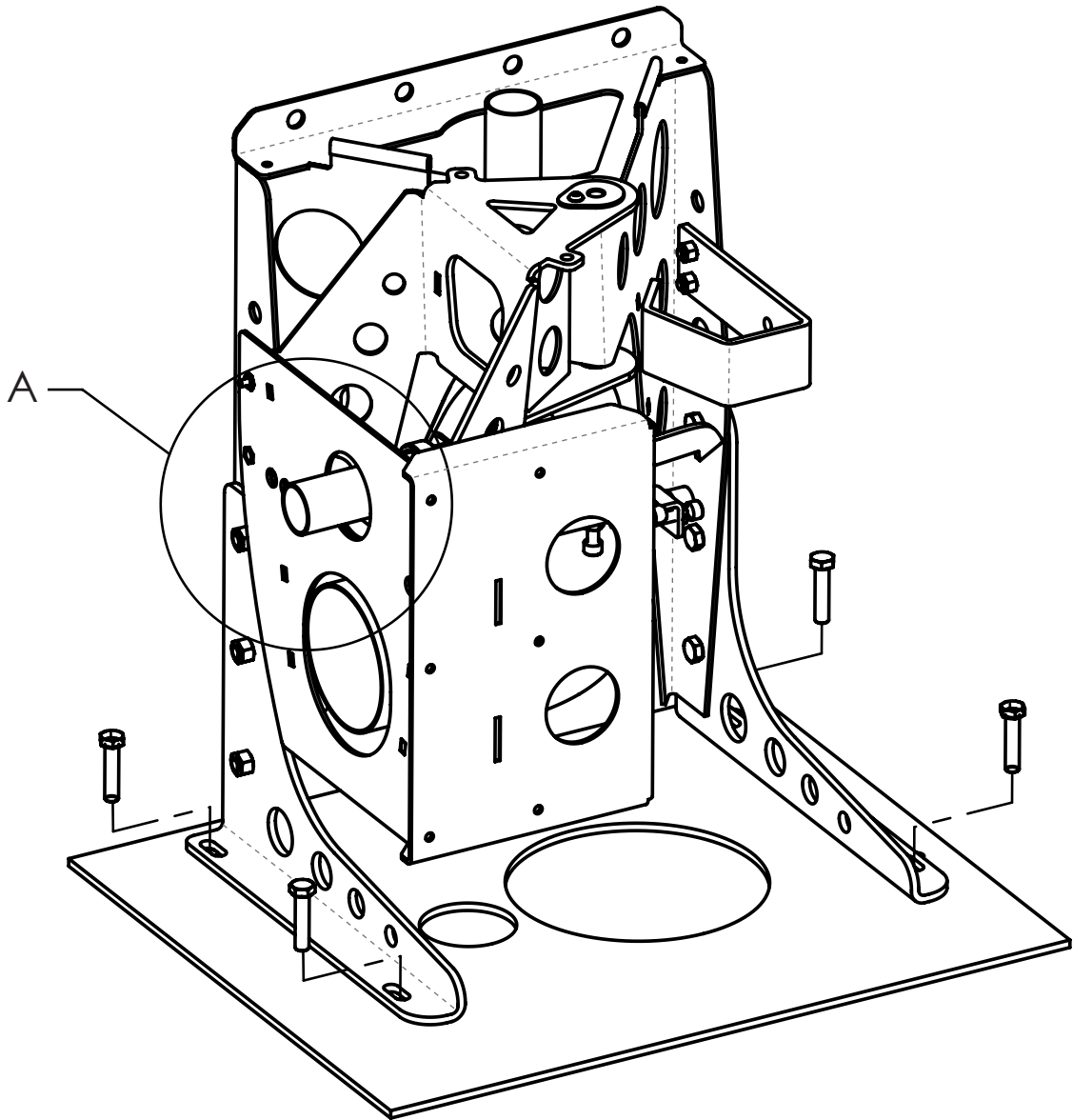
- 8x M8 resin fixing anchors and penny washers

For timber floor and walls

- 8x 6mmx60mm coach screws and penny washers

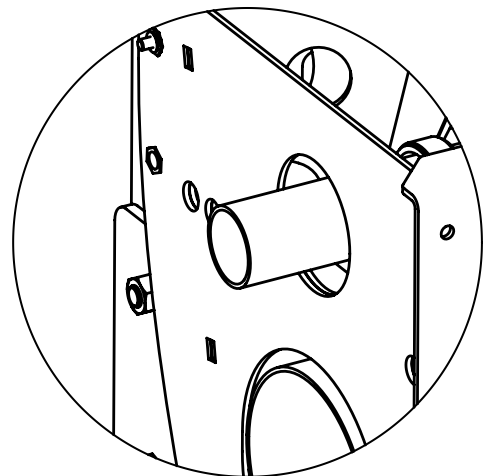
TOOLS

- Masonry Drill and bits
- Socket set with 17 & 19mm sizes
- Spanners, to include 17 & 19mm sizes
- Adjustable spanner
- Flat & 'cross head' screwdrivers
- Hacksaw
- Measuring tape
- Pencil/pens
- Silicone grease (vaseline will suffice)
- 2x Sash clamps
- T25 Torx Bit
- Ratchet Spanner to fit torx bits from the side



This Template board has been designed to make the installation as easy as possible. It is marked up to show you where to fix hidealoo to the floor and wall.

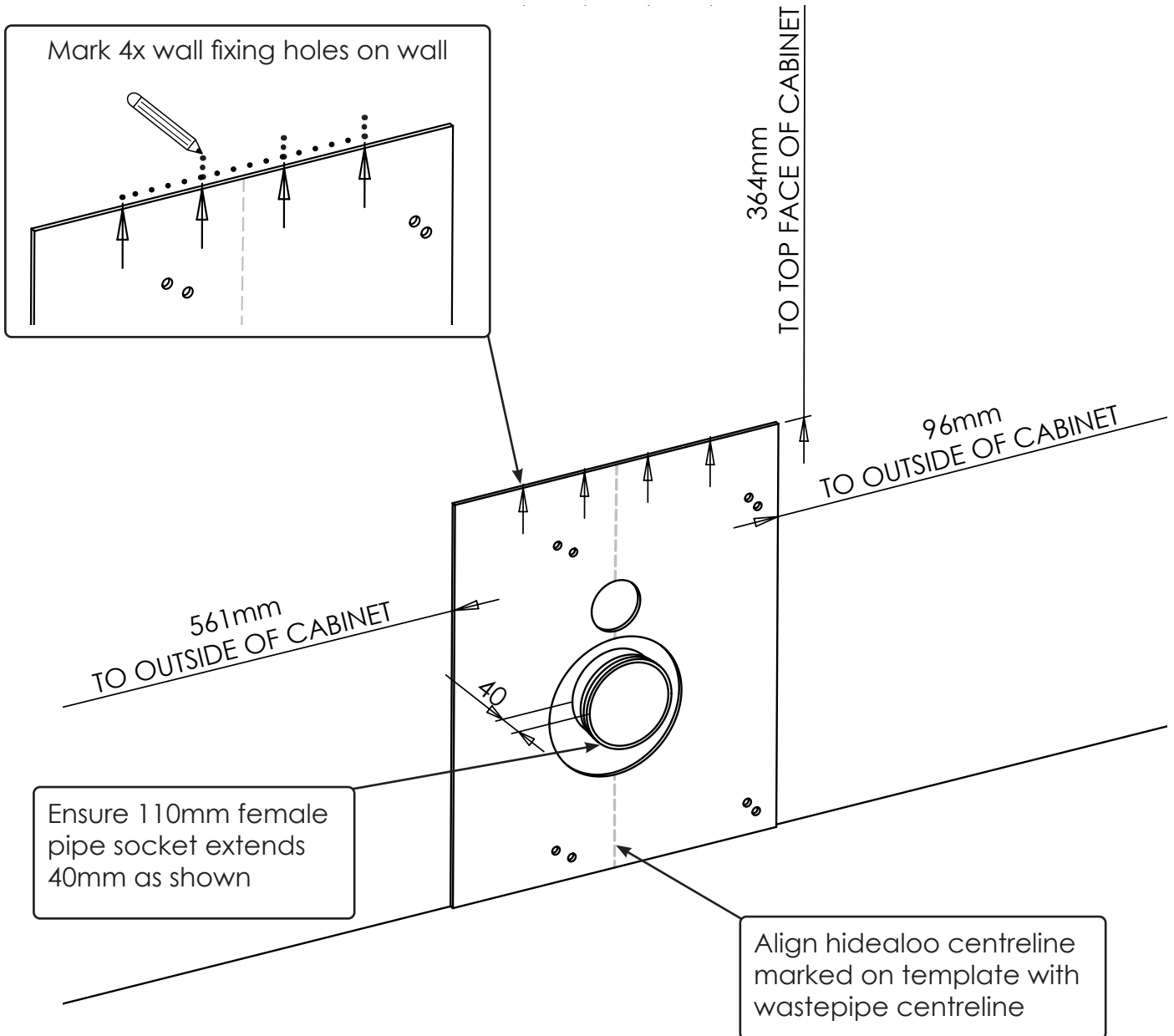
Unbolt the 4x feet anchor bolts and remove the template board from the feet.



DETAIL A

Check the flush pipe protrudes by an amount to match your pan socket (approx 60mm), adjust with the pipe clamp slackened if required.

3 TEMPLATE - WALL

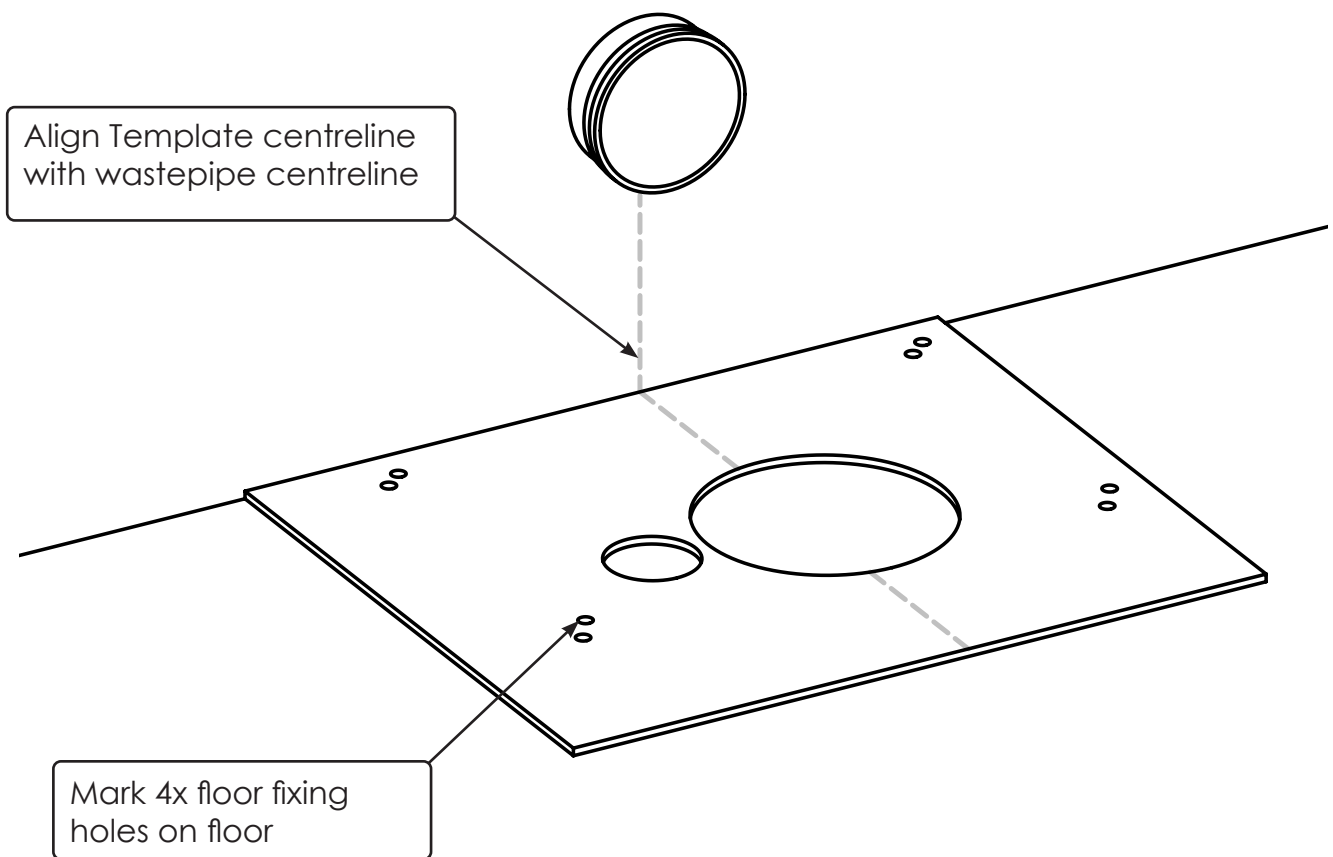


Using the template in the vertical orientation, mark on the wall the 4x holes to drill out for fixing in the hidealoo.

Also confirm the waste/flush pipe lengths and confirm adequate room space around the template for your likely cabinet size as per the suggested dimensions.

N.B These suggested dimensions are likely to be the minimum required to house the Hidealoo if you are using a pan with a length of 540mm. If you want to make a cabinet similar in size & style to those shown on the website, please visit the Hidealoo website to download the cabinet installation manual.

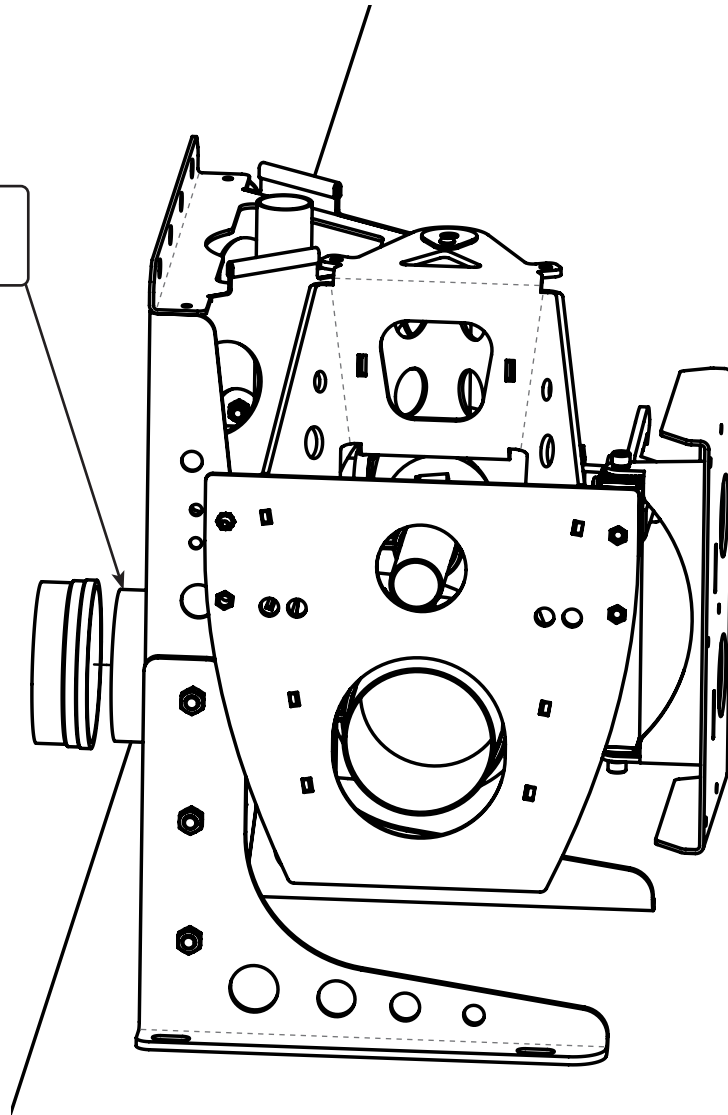
4 TEMPLATE - FLOOR



Using the template in the horizontal orientation, mark on the floor the 4x holes to drill out for fixing in the hidealoo.

Ensure not to use the holes marked "Transit Hole Only".

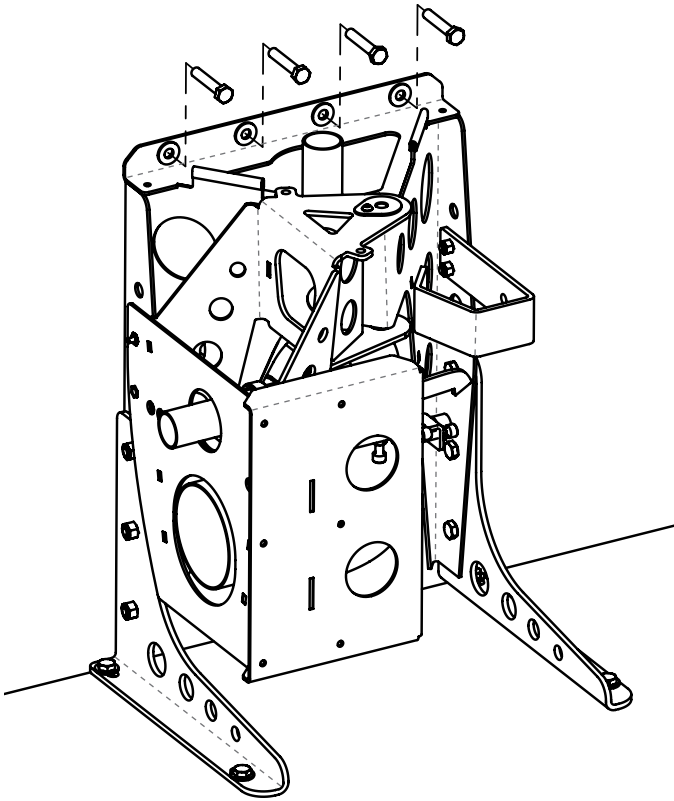
Apply silicone grease to mating surfaces



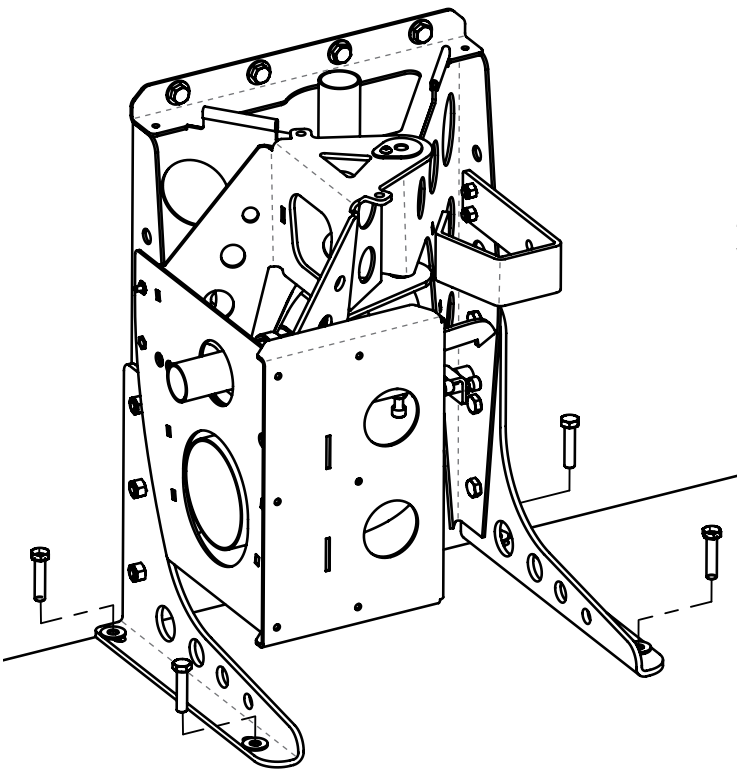
Use silicone grease (or similar) to lubricate the mating surfaces of the waste pipe, and slide the Hidealoo into position to align with the holes drilled in the floor and the wall.

Hidealoo Unit	x1
---------------	----

User-sourced	
Silicone Grease	x1



1. Fix the Hidealoo to the wall using the washers and correct fixing hardware required for your wall.



2. Fix the Hidealoo to the floor using the washers and correct fixing hardware required for your floor.

Hidealoo Unit	x1
---------------	----

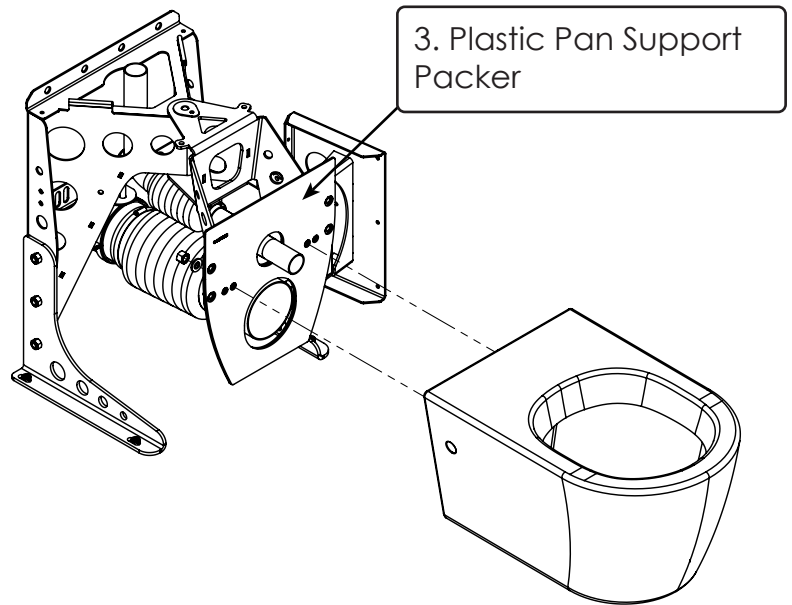
User-sourced	
M8 Resin Fixing Anchors	x8
M8 Penny Washers	x8
OR	
6mmx60mm Coach Screws	x8
M8 Penny Washers	x8

7 TOILET PAN

1. Use silicone grease (or similar) to lubricate all the flush and waste pipe connections to make sure all lip seals can fully settle in, and be removed for final adjustments if needs.

2. Then push on the pan connector pipe (bought with your pan) to seat firmly on the ceramic output.

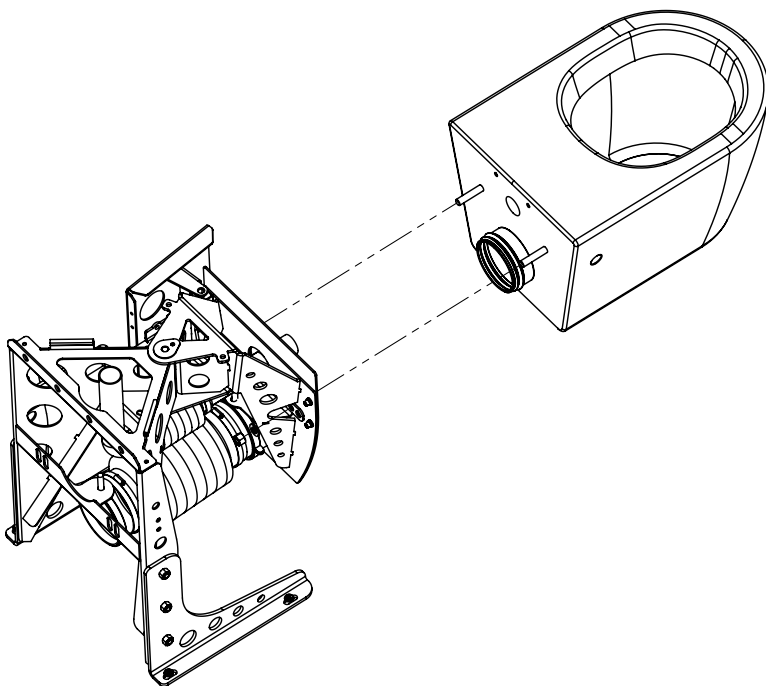
3. Place the Plastic Pan Support Packer on the Hidealoo frame as shown. Hold in place with tape until pan installed.



4. Push the flush pipe seal onto the protruding 40mm pipe and lubricate outside.

5. Place pan on suitable spacers on the floor so you can easily slide it into connection with the pan connector going into the 110mm waste pipe, and the 40mm flush pipe and seal going into the flush water socket.

6. Insert the pan connecting bolts/studs (bought with pan) into place with washers and ensure the load spreading bushes are on the ceramic side.

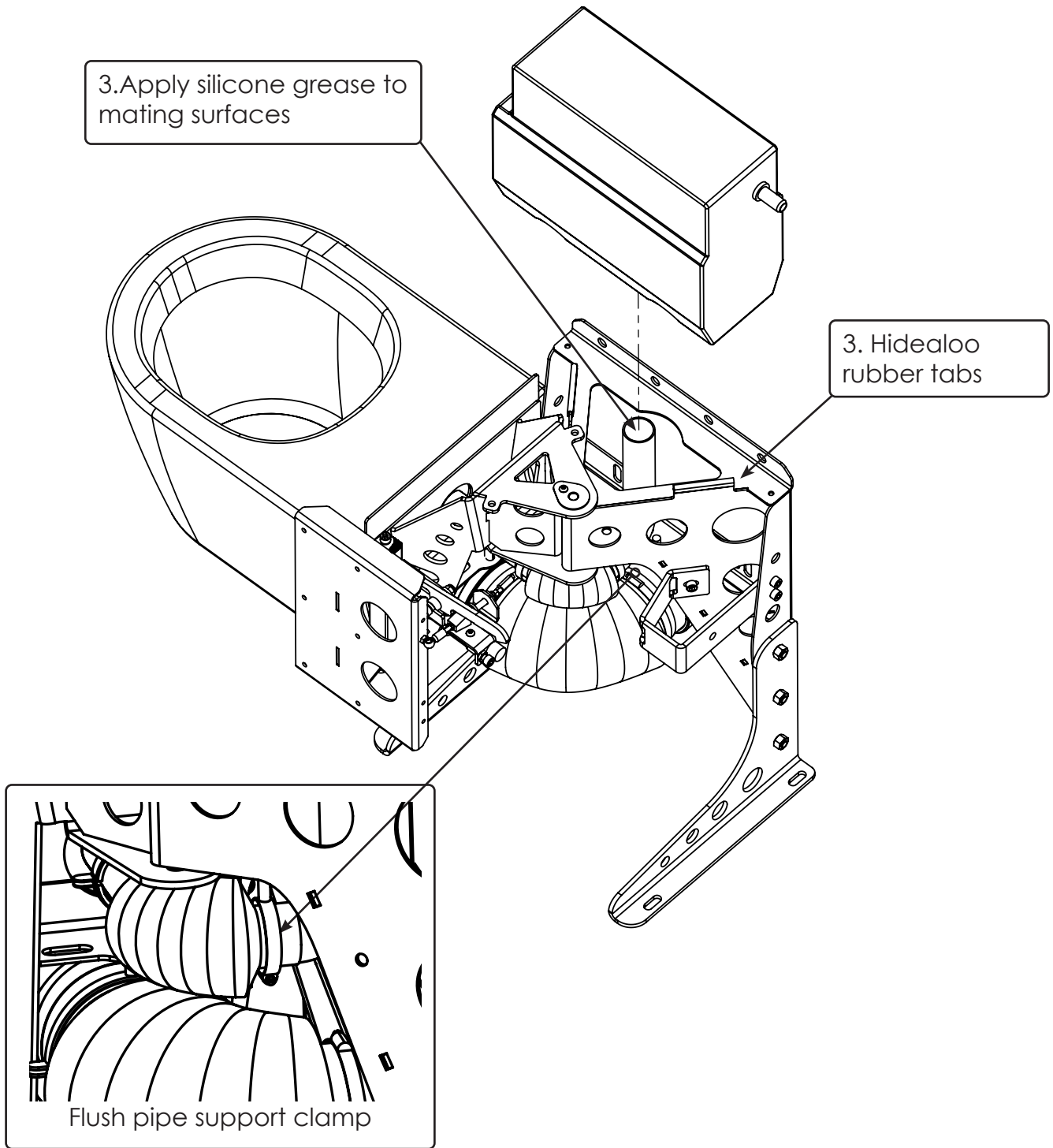


Ensure pan nuts are at least 15mm threaded onto the studs for maximum strength.

Over tightening may damage the pan. Check fitting instructions supplied with your pan.

Plastic Pan Support Packer	x1
----------------------------	----

User-sourced	
Toilet Pan	x1
Pan mounting Studs	x2
Pan connector	x1
Flush pipe seal connector	x1
Washers	x2
Nuts	x2
Load Spreading Bushes	x2
Silicone Grease	x1



1. Check the Hidealoo flush pipe is correct height for your cistern and trim/adjust as needs.
2. If required, slacken the Flush pipe support clamp and adjust pipe position. Do not over-stretch, or over-compress the corrugated rubber pipes.
3. Lubricate all seals and lower the cistern to rest on the Hidealoo rubber tabs. Tighten the output fitting from the cistern to the Hidealoo flush pipe. Secure cistern to the wall as required.

User-sourced	
Concealed Flush Cistern	x1
Silicone Grease	x1

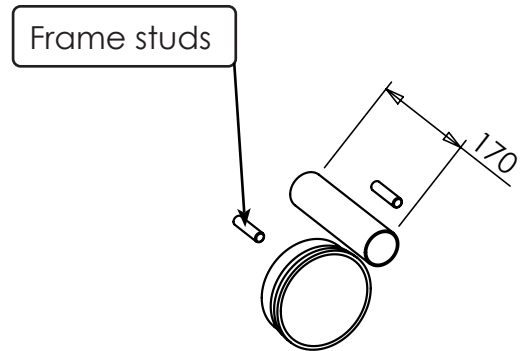
9 ALTERNATIVE INSTALL - WITH BUILT IN WALL MOUNT BRACKET & CISTERN

When using a standard concealed support frame for wall hung pans, the flush pipe will need to protrude approx 170mm to connect to the Hidealoo flexible rubber bellows.

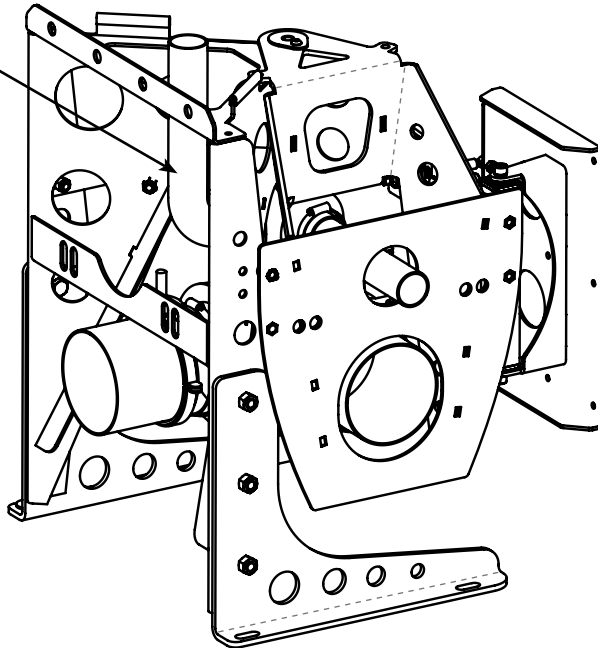
You will need to remove the Hidealoo 90° rigid flush pipe and re-insert the horizontal flush version from the concealed cistern to the Hidealoo pipe clamp & bellows.

Avoid over-tightening the clamp and jubilee clip.

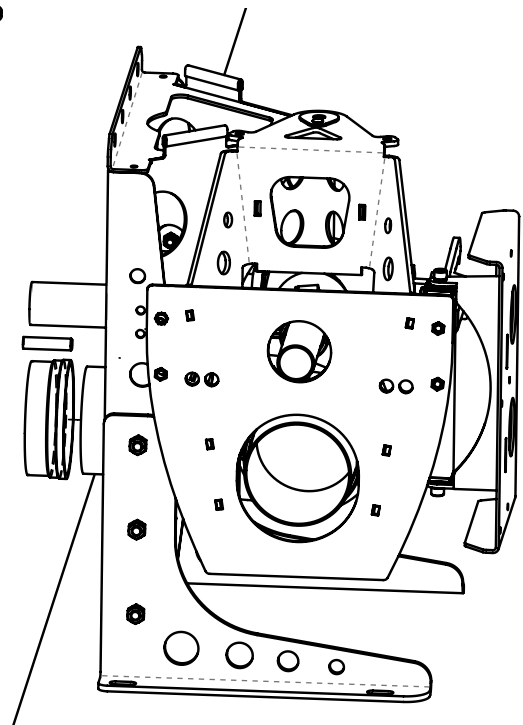
The 2x pan mounting studs can be used to secure the Hidealoo Unit against the wall.



Hidealoo 90° rigid flush pipe



Install the Hidealoo as from Page 5 onwards, but without the addition of the exposed cistern.

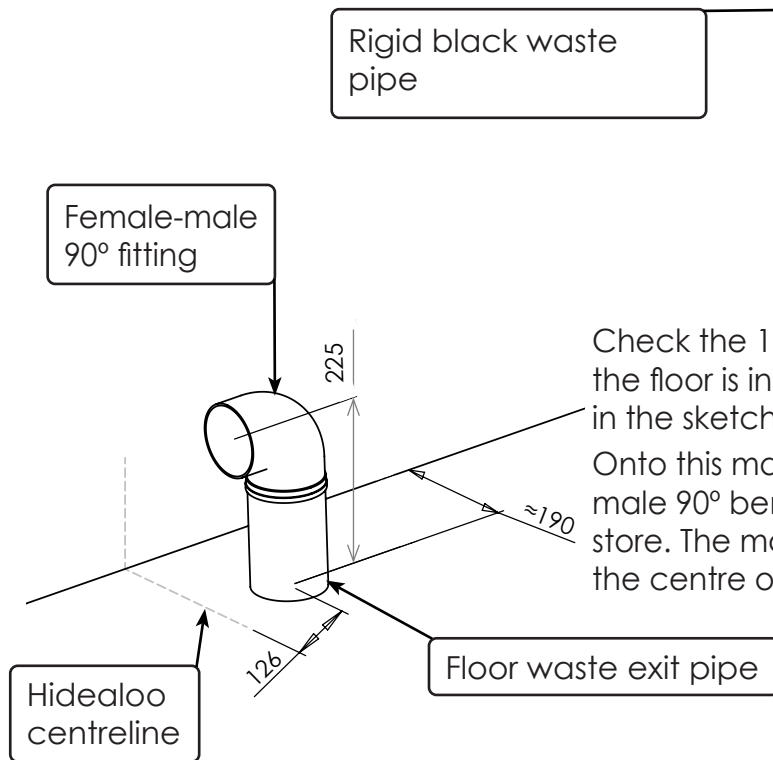
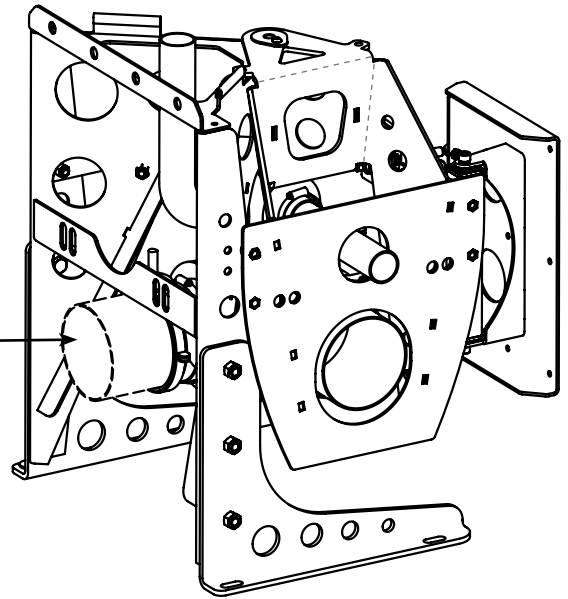


10 FLOOR WASTE EXIT ADAPTION

To make the Hidealoo function with a floor exit instead of the rear version, you will need to slacken the output waste pipe clamp and jubilee clip holding the Hidealoo flexible bellows.

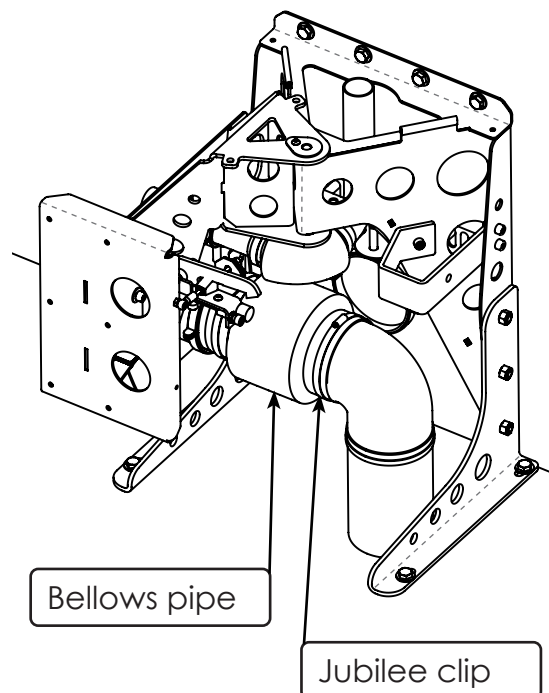
Then remove the rigid black waste pipe and support clamp.

Leave the bellows in place, and retain the jubilee clip for re-use.



Check the 110mm waste pipe protruding up through the floor is in position as per the dimensions indicated in the sketch diagram.

Onto this male pipe you will need to add a female-male 90° bend purchased from a plumbing supply store. The male horizontal bend should point towards the centre of the Hidealoo swivel axis.



Lift the Hidealoo Unit into place. Fit as per the instructions from Page 5 onwards.

With the Hidealoo system retracted, slip the jubilee clip over the floor waste pipe, lubricate the male spigot and then push on the bellows pipe approx. 40mm. Make sure the bellows pipe is not twisted between the two sides, and the floor waste end is slightly lower than the pan end.

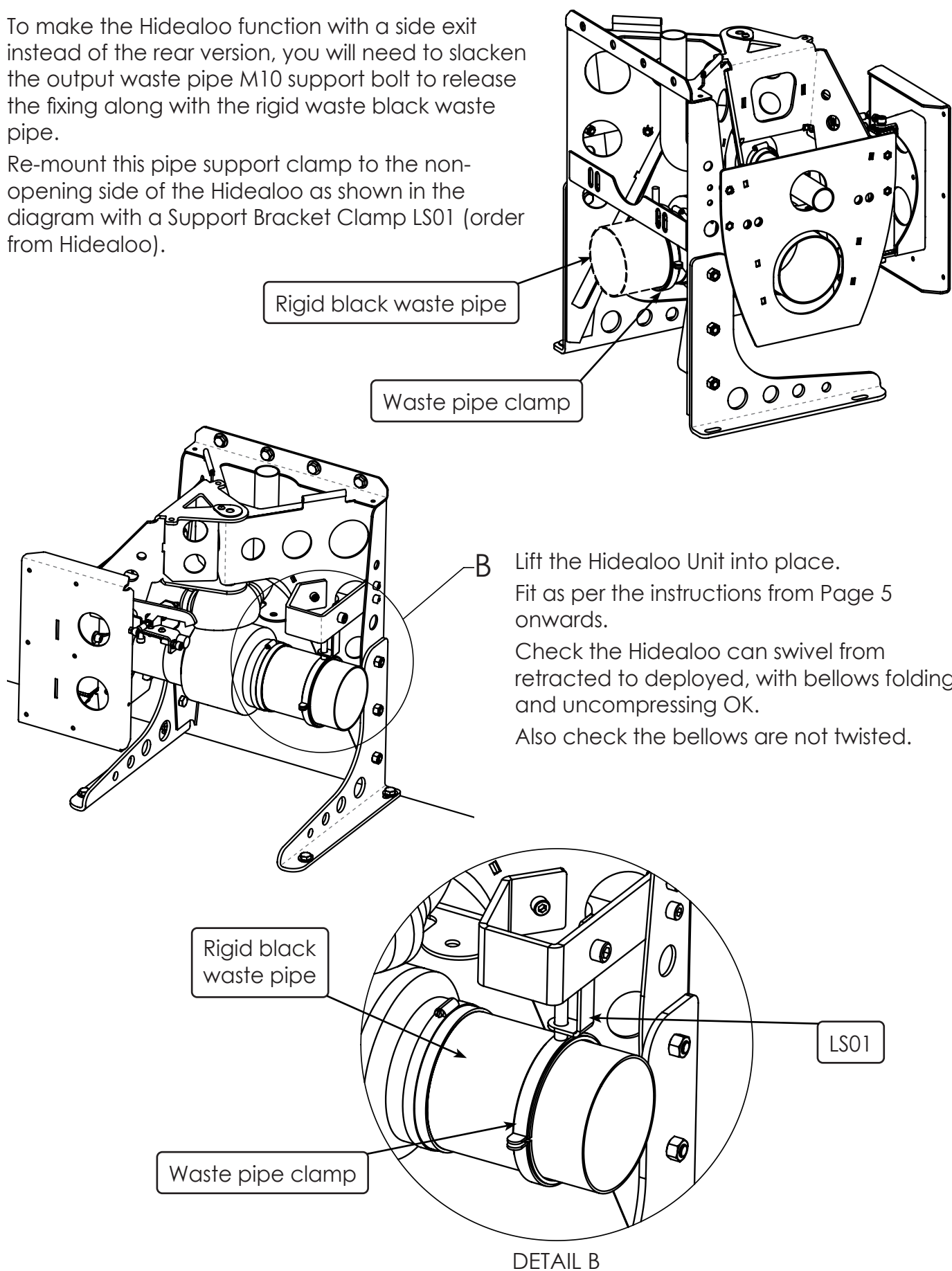
Check the Hidealoo can swivel from retracted to deployed, with bellows folding and uncompressing OK. Then secure with jubilee clip, do not over-tighten.

User-sourced	
Female-male 90° fitting	x1
Silicone Grease	x1

11 SIDE WASTE EXIT ADAPTION

To make the Hidealoo function with a side exit instead of the rear version, you will need to slacken the output waste pipe M10 support bolt to release the fixing along with the rigid waste black waste pipe.

Re-mount this pipe support clamp to the non-opening side of the Hidealoo as shown in the diagram with a Support Bracket Clamp LS01 (order from Hidealoo).



Support Bracket Clamp LS01	x1
----------------------------	----

User-sourced	
L-Bracket No.1	x1
Silicone Grease	x1