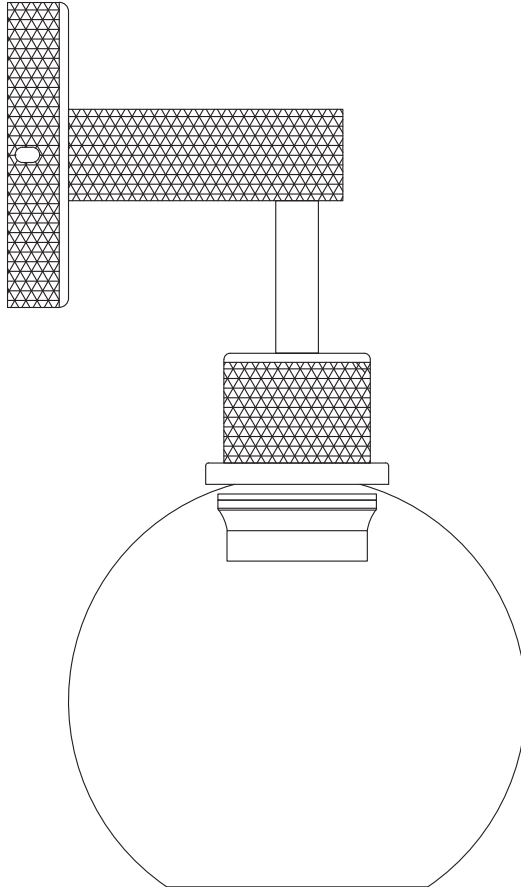




Foundry Wall Light



Fitting Instructions

Please follow them carefully and
leave this manual with end user

Important Information

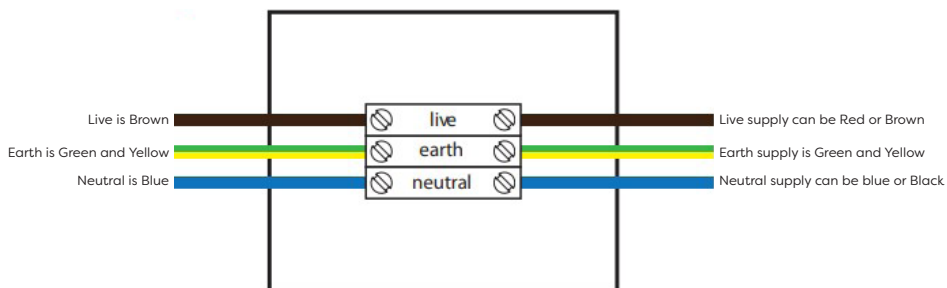
Before installation, please read this guide carefully.

1. **We recommend that this product is installed by a qualified tradesperson**, Victorian Plumbing Ltd. accept no liability for products incorrectly installed, or where the correct testing procedures have not been adhered to, thus resulting in consequential damage.
2. Unpack the product then read these instructions before proceeding. Inspect the product for damage. If any damage is found, contact our Customer Relations team.

ENSURE THE DOMESTIC ELECTRICAL MAINS SUPPLY TO WHICH THE CEILING LIGHT IS BEING CONNECTED IS TURNED OFF!

1. Position the wall light in a suitable location (according to the zonal diagram), ensuring that the domestic electrical mains supply is within reach of the electrical entry point of the product.
2. Carefully mark the position of the wall light mounting points using a soft pencil. Please ensure that all marked mounting points accurately match up with the fixing points on the wall light.
3. Before drilling, ensure there are no hidden cables or pipes behind the mounting points. Using a suitable drill bit, drill holes in the marked positions to a suitable depth.
4. Insert wall plugs level within the surface of the wall. For plasterboard walls, specialist fixings should be purchased.
5. Line up the wall light with marked fixing points, connect the domestic mains supply to the terminal block according to the wiring diagram.
6. Secure the light base to the wall using the screws provided. Screw the light shade to the base arm, then insert the appropriate light bulb into the wall light.
7. Switch the domestic electrical mains supply back on.

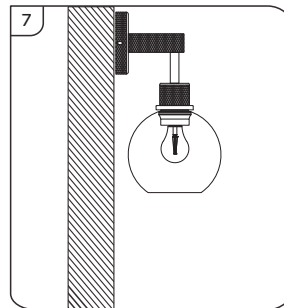
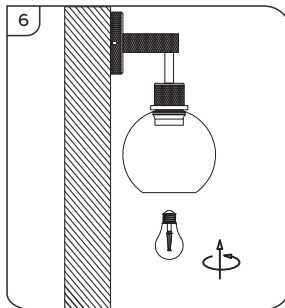
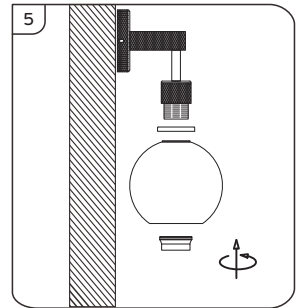
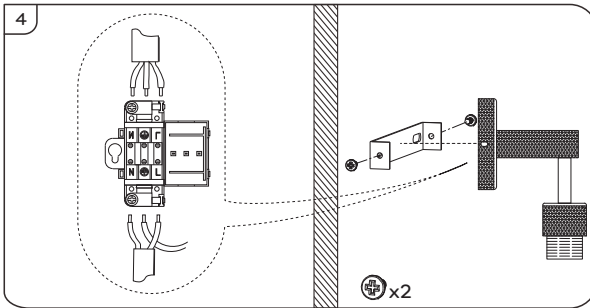
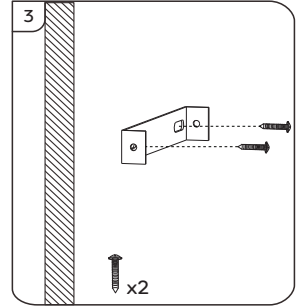
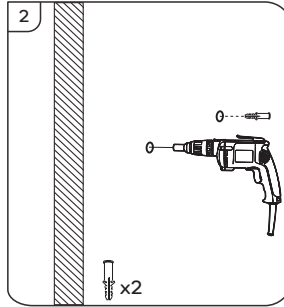
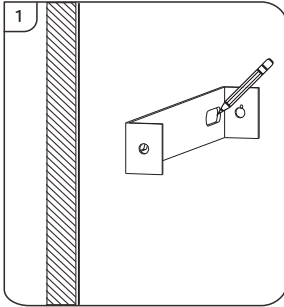
Electrical connection:



LUMINAIRE

MAINS SUPPLY

Diagram:



Diagrams are for illustration purposes only. Your wall light may superficially differ from this drawing however the installation guide steps still apply.

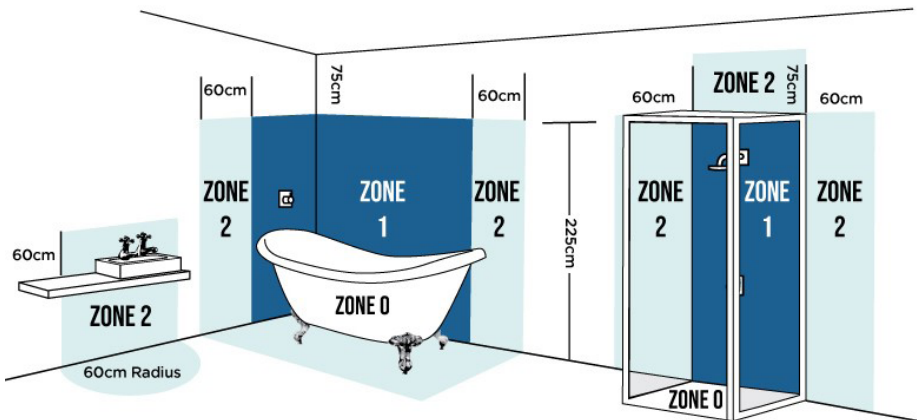
Maintenance & Cleaning

- **Caution** - Always disconnect the power supply when servicing or cleaning.
- Use a clean dry soft cloth.
- Do not use abrasive cloths or polishes as this may cause damage to the product.
- Glass shades should only be washed with in lukewarm water and dried thoroughly before refitting

Safety Information

- We always recommend installation by a qualified electrician.
- This product is produced in conformity with all relevant safety regulations.
- To reduce the risk of fire, electrical shock, or personal injury, always turn off and unplug lamp and allow it to cool prior to replacing light bulb.
- Ensure the power is switched off from the mains before cleaning or carrying out maintenance.
- Do not attach your new light fixture wiring to any existing wiring that shows signs of wear and tear,
- When changing the bulb ensure that the power supply has been disconnected and the bulb has cooled down before replacing.

Zonal Diagram:



Recycling and Disposal:

Please recycle the packaging in accordance with your local government regulations on waste handling and follow the same advice at the end of the products life.

www.victorianplumbing.co.uk