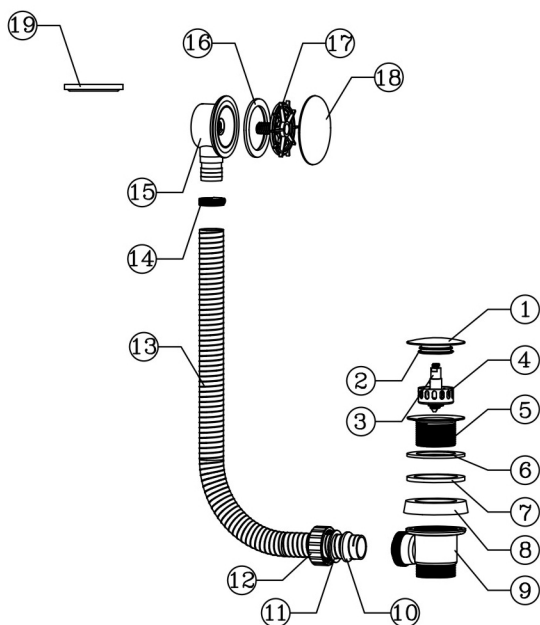


## PARTS INCLUDED



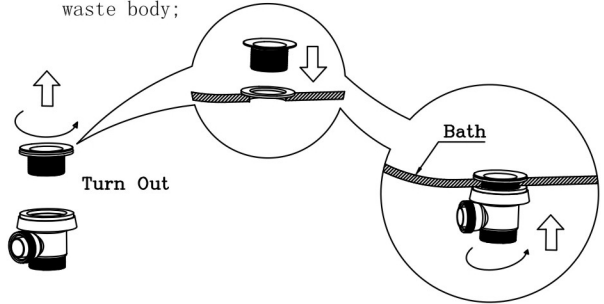
1. Cover	x	1
2. Seal washer	x	1
3. Click clack mechanism	x	1
4. Filter screen	x	1
5. Waste flange	x	1
6. Silicone washer	x	1
7. Rubber washer	x	1
8. Thickness gasket	x	1
9. Waste body	x	1
10. Rubber seal washer	x	1
11. Plastic ring	x	1
12. Plastic screw	x	1
13. PVC hose	x	1
14. Clamp	x	1
15. Overflow elbow	x	1
16. Rubber washer	x	1
17. Overflow plug	x	1
18. Overflow cover	x	1
19. Spare thick washer	x	1

# Installation Steps

1. Take out cover and place side;



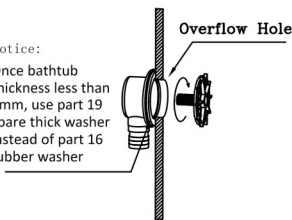
2. Turn out waste flange, put silicone washer in the bathtub. Then let flange pass through hole of bathtub, put on rubber washer, then screw tighten waste body;



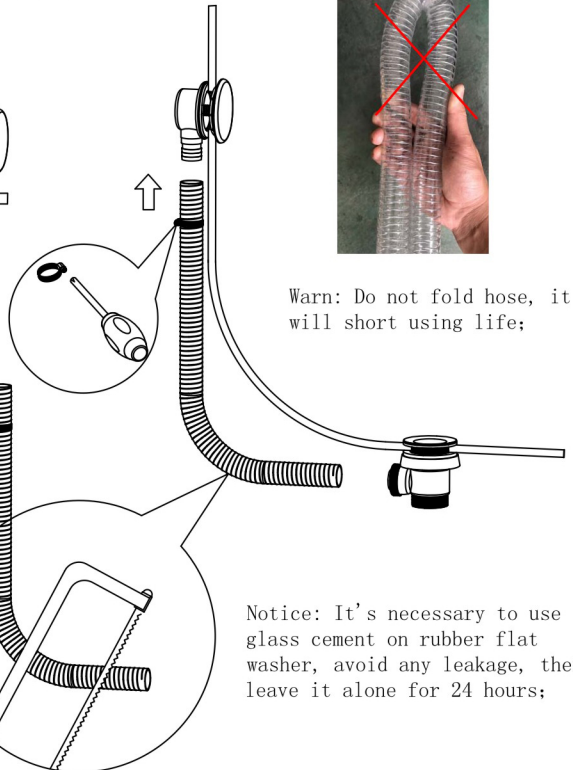
3. Put overflow elbow and rubber washer on the back of bathtub, screw lock plug on overflow elbow, then push overflow on it;

Notice:

Once bathtub thickness less than 5mm, use part 19 spare thick washer instead of part 16 rubber washer



4. Connect hose to overflow elbow, tighten screw with Phillips screwdriver. Do not tighten too much, as long as not fall down, otherwise the elbow will be broken;

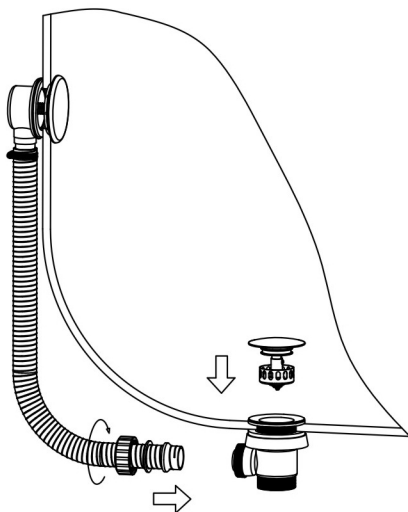


Warn: Do not fold hose, it will short using life;

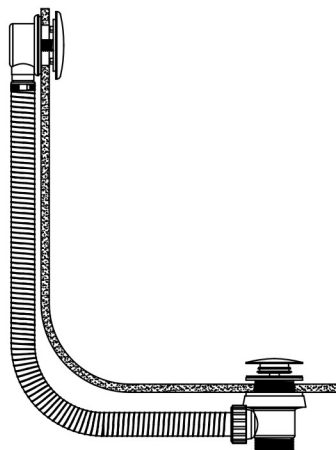
Notice: It's necessary to use glass cement on rubber flat washer, avoid any leakage, then leave it alone for 24 hours;

Tips:

1. After completing the installation, ensure hose not folded and twisted, otherwise it will short using life;
2. Cut hose according to the actual required length, do not let hose distort;



5. Tighten screw plastic nut to the waste body, and put back cover;



6. Ensure all accessories are installed in place;

Once assembled, filled the bathtub with water, check for leaks 8 hours.

