

Please follow the fixing and care instructions to ensure your curtain rod is fitted safely and retains its high quality finish.

This instruction leaflet applies to the following products:

AD179441 Space Saver Rod Maximum gap width = 1921mm (with brackets fully extended)

Fixing Pack Contents

- | | |
|-----------------------|-------------------------|
| (A) Fixing screws x 4 | (D) Alignment guide x 1 |
| (B) Wall plugs x 4 | (E) O-ring x 2 |
| (C) Hex head key x 1 | (F) Cutting guide x 1 |

Tools Required

Drill; 6mm masonry drill bit (6mm ceramic drill bit optional); Cross-head screwdriver; Pencil; Spirit level; Fine Tooth Hacksaw; Hex Head Key (Supplied)

KEEP DIY TOOLS OUT OF THE REACH OF CHILDREN

Home Safety Advice

Always take care when using an electric drill, particularly in the bathroom. Always check for hidden cables and pipework before drilling and take extreme care if there is any water in the working area. It is advisable to use a residual current circuit breaker (RCCB).

Always wear suitable eye protection when drilling.

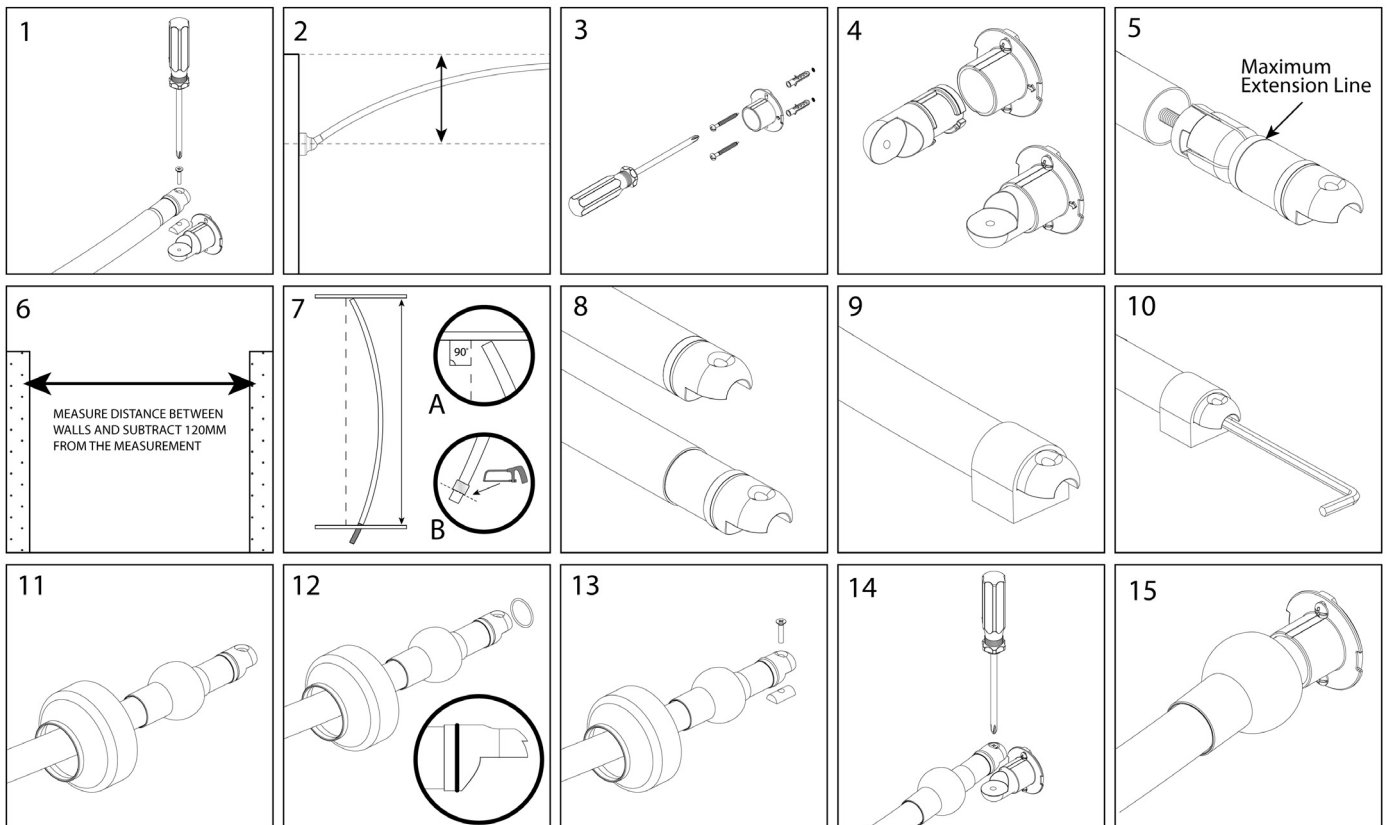
If the product is to be fitted on a ceramic tiled wall, a ceramic drill bit should be used. Always ensure that the drill hole passes through the central tiled area rather than through the grouted area. To prevent damage to the tile, mask the area around the hole with tape before drilling.

Note: The wall plugs supplied are for use on solid walls only. For cavity walls or plasterboard, use specialist fixings that are available from all good DIY stores.

Fixing Instructions

1. Firstly, separate the swivel joint components by removing the cross head pivot screws. (See Fig.1)
2. Select a suitable position for the Space Saver Rod and mark its fixing positions on the wall by using the holes in the wall brackets as a template. The brackets have been designed to be fitted with the fixing holes in a vertical position and the 'Arrow' pointing into the bath or shower tray (See fig 3). Remember to allow for sufficient curtain overlap in the bath/shower tray, and also, ensure there is sufficient height above the rod to be able to rotate it (See Fig.2).
3. Check that the hole positions are level, then use a 6mm masonry drill to drill the holes to a depth of 30mm. If drilling through tiles, please pre-drill using a ceramic drill bit.
4. Insert the wall plugs to the surface of the wall. If fitting to a tiled surface, the wall plugs should be inserted below the surface of the tile to avoid cracking. Fix the wall brackets in position using the screws provided and rotate the swivel inserts so that the flat surface faces upwards (See Fig.3 & 4).
5. The rod is supplied at a defined length which will fit into a maximum recess of 192cm, when the joint inserts are fully extended. It can be cut to size using a fine toothed hacksaw, with the adjustable joint inserts allowing finer rod length adjustment if required. To obtain the correct rod length, firstly, remove the joint inserts from the ends of the rod (See Fig.5). Measure the gap between the fixing surfaces and subtract a further 120mm from this measurement to allow for the swivel joint components (See fig 6).
6. Mark this distance accurately onto the floor or a suitable flat surface using the wall as a datum edge (See Fig.7A). Lay the rod onto the floor and copy the measurement onto the outside edge of the rod. Slide the cutting guide onto the rod and up to the cutting mark and tape it firmly in position (See Fig.7B).
7. Cut the rod to length, ensuring the end is cut square and the cut edge is deburred. Take time and care when cutting because stainless steel is a hard material.

8. Replace the joint inserts by inserting them fully into the ends of the rod (See Fig.5), and, with the outside arc of the rod closest to you, rotate them, so that the flat surfaces are facing downwards (See Fig. 8)
9. Check the length is correct by firstly ensuring the wall bracket swivel joints are fully inserted into the wall brackets (See Fig.4) and then placing the rod in position on the wall brackets. Align the flexible joint pivot screw holes by either extending or inserting the joints into the tube (See Fig.8), but do not extend the joint further than the line shown in Fig.5.
10. Mark the positions of the joint inserts if adjustment has been made and place the rod back onto the flat surface. Position the alignment guide onto the end of the joint with the flat face of the alignment guide facing downwards. (See Fig.9) Rotate the joint until it is aligned with the rod and tighten the expansion joint using the hex head key provided. (See Fig.10) Repeat for the opposite end.
11. Replace the rod to check the alignment of the flexible joint pivot holes. If adjustment is required, undo the expansion joint screw by 2 or 3 turns and hit the end of the hex head key with a hammer. This will release the cone insert allowing correct adjustment to be made. DO NOT FULLY UNWIND THE HEX HEAD SCREW.
12. Slide the wall bracket covers and the ball covers onto the rod, noting their orientation (See Fig.11) Place the O-ring over the end of the joint and locate it into the annular recess. (See Fig.12)
13. Assemble the rod to the wall bracket swivel inserts ensuring the curve of the rod is pointing into the room. Place the plastic bush between the two halves of the flexible joint and screw tightly together. (See Fig.13 & 14)
14. Once the rod is in position carefully slide the ball cover over the flexible joint assembly until it engages with the O-ring. Slide the wall bracket cover over the wall bracket, aligning the two tabs at the back of the cover with the two recesses in the wall bracket. (See Fig.16 & 17) Twist the cover clockwise to secure in position. (See Fig.16)
15. Hook the Rod Reacher onto the rod and rotate the rod to check the assembly is working correctly.



Product Care Advice

To retain the best quality finish, clean product regularly with a soft damp cloth. Do not use abrasive or chemical cleaners, as these will damage the product.

Please retain this leaflet for future reference.

Croydex Ltd, Central Way, Andover, Hants, SP105AW, UK
 Tel: +44 (0) 1264 365881 ~ Fax: +44 (0) 1264 356437
 website: www.croydex.com ~ Email: info@croydex.co.uk

