

# Riser Rail Hook Over Caddy

Thank you for purchasing this Croydex product. Please follow the fixing and care instructions to ensure your Riser Rail Hook Over Caddy is fitted safely and retains its high quality finish. Please retain this leaflet for future reference.

This installation guide applies to the following product:

## **QM260441 Riser Rail Hook Over Caddy with Rust Free Chrome**

### **Home Safety Advice**

- Do not strike the product with hard or sharp objects.
- Do not use the product as a grab rail.
- The adhesive pad is suitable for use on most flat, finished surfaces, such as gloss paint, tiles, polished stone, laminates and mildly textured surfaces.
- The adhesive pad is not suitable for use on unfinished material, such as brick, blockwork and loose, flaky surfaces.
- Do not use the adhesive pad on decorative wall paper finishes as these will be damaged on removal.
- Do not overload the caddy - maximum weight 2kg (4.5lbs) evenly distributed.
- Do not position pad over uneven grout lines.

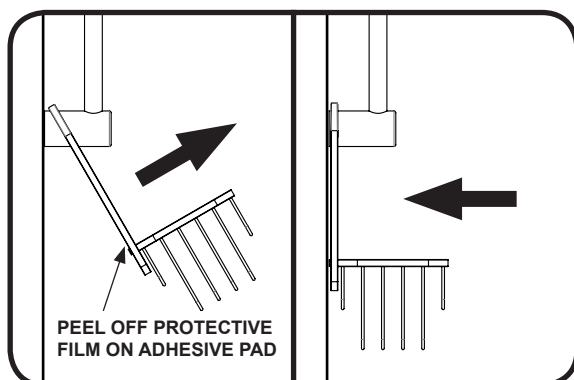
### **Product Care**

- To retain the best quality finish, clean product regularly with a soft cloth and mild detergents.
- Do not use abrasive or chemical cleaners as these may damage the product.
- Spray cleaning liquids onto the cloth and not directly onto the product.

### **Installation using the adhesive pad**

1. Hook the caddy onto the lower riser rail bracket.
2. Align the caddy in the desired hanging position and tilt outwards to remove the protective film from the adhesive pad - See Fig.1.
3. Rotate the caddy back towards the wall surface, ensuring the hook remains in contact with the riser rail bracket while doing this, then stick the adhesive pad to the wall surface to secure the storage caddy in position.

**FIG.1**



#### **5-year Anti-corrosion Guarantee**

This product is guaranteed against corrosion for 5 years. Please retain a copy of your receipt which must be presented should a guarantee claim be necessary. This guarantee covers corrosion under normal usage, when the product is installed, used and cleaned in accordance with these instructions. This guarantee does not cover corrosion resulting from damage to the protective coating due to the use of abrasive sponges or pads, abrasive cleaners, strong chemical cleaners or metal polish. In the unlikely event that corrosion should occur during the guarantee period we will replace the product.

For details of the other items in the Croydex range please visit our website: [www.croydex.com](http://www.croydex.com)

Croydex, Central Way, Andover, Hampshire, SP10 5AW, UK

Tel: +44 (0) 1264 365881 Fax: +44 (0) 1264 356437

E-mail: [info@croydex.co.uk](mailto:info@croydex.co.uk)