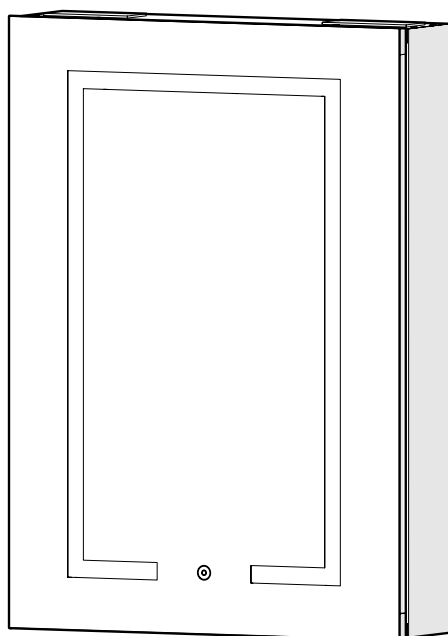


WC720069E

CARLTON ONE DOOR ILLUMINATED CABINET WITH WIRELESS SPEAKERS



ALL ILLUSTRATIONS OF THE PRODUCT ARE FOR REFERENCE ONLY. COMPONENTS SUPPLIED WITH INDIVIDUAL PRODUCTS MAY DIFFER.

ALL PRODUCT DIMENSIONS DETAILED IN THIS INSTALLATION AND MAINTENANCE MANUAL ARE APPROXIMATE.

CONTACT DETAILS (UK)

Croydex
Central Way
Andover
Hampshire
SP10 5AW
UK

Tel: +44 (0)1264 365881
Email: info@croydex.co.uk

Web: www.croydex.com

CONTACT DETAILS (EU)

MIL
Unit 8 Purcellsinch Ind Est
Dublin Road
Kilkenny
R95 HP71
Ireland



ALWAYS READ THROUGH AND FULLY UNDERSTAND THE INSTRUCTION LEAFLET BEFORE STARTING THE INSTALLATION OF THIS PRODUCT.

ALWAYS CHECK THE PACKAGING AND ENSURE YOU HAVE ALL FIXINGS AND COMPONENT PARTS DETAILED IN THIS INSTRUCTION LEAFLET BEFORE RECYCLING OR DISPOSAL OF THE PACKAGING.

ALWAYS ENSURE YOU HAVE ALL THE FIXINGS AND COMPONENT PARTS BEFORE ATTEMPTING TO ASSEMBLE OR FIT THIS PRODUCT.

Thank you for purchasing this Croydex product. Follow the fixing and care instructions in this manual to ensure that your product is fitted safely and that it retains its high quality finish.

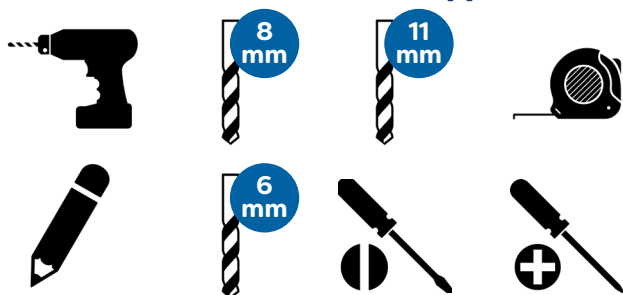
RETAIN THIS MANUAL FOR FUTURE REFERENCE.

SECTION 1 - INTRODUCTION

SAFETY & PRODUCT CARE

1. **ALWAYS** make sure all parts are present. If any part is damaged or missing, do not attempt to assemble.
2. **ALWAYS** keep all tools out of reach of children.
3. **ALWAYS** take care when using power tools, particularly if there is any water in the working area.
4. **ALWAYS** wear eye protection when using power tools.
5. **ALWAYS** check for pipes and cables before drilling into walls.
6. **ALWAYS** use a Residual Current Circuit Breaker (RCCB).
7. **ALWAYS** use a drill bit that is suitable for the surface that is being drilled.
8. **ALWAYS** use a ceramic drill bit when drilling into tiled surfaces and use masking tape on tiled surfaces to prevent the drill slipping.
9. **DO NOT** use a hammer drill when drilling through tiles.
10. **ALWAYS** ensure the drill hole passes through the central tiled area, **DO NOT** drill on the grout line of tiles.
11. The wall plugs supplied are for use on solid walls only. For cavity walls or plasterboard walls, use the toggle bolts supplied or alternative specialist fixings that are suitable for the type of wall construction.
12. **ALWAYS** insert the wall plugs flush to the surface of the wall. If fitting to a tiled surface, the wall plugs should be inserted below the surface of the tile to avoid cracking.
13. **DO NOT** use power tools for assembling the product including power drills and power screwdrivers.
14. **DO NOT** strike the glass surfaces with hard or sharp objects.
15. **DO NOT** position glass components in close contact with a heat source.
16. **DO NOT** use abrasive or chemical cleaners as these may damage the product. To retain the best quality finish, clean the product regularly with a soft damp cloth.

TOOLS REQUIRED (not supplied)



IMPORTANT INSTALLATION INFORMATION

This is a class 1 appliance and **MUST** be connected to earth.

Hazardous voltages inside - **DO NOT** remove any covers.

This product **MUST ONLY** be installed in accordance with the installation instructions.

Connection of the electrical supply **MUST ONLY** be carried out by a competent person in accordance with the Building Regulations 2010 and connection to the fixed wiring of the mains electrical supply must comply with the current revision of the IET Wiring Regulations BS 7671.

Keep DIY tools out of the reach of children.

Electrical Supply: 220-240Vac 50Hz

Shaver Socket: 220-240Vac 20VA Max

Demister Pad: 220-240Vac 10W

Lamp Type: LED 12Vdc 22W 3000K-6500k (+/- 300K)

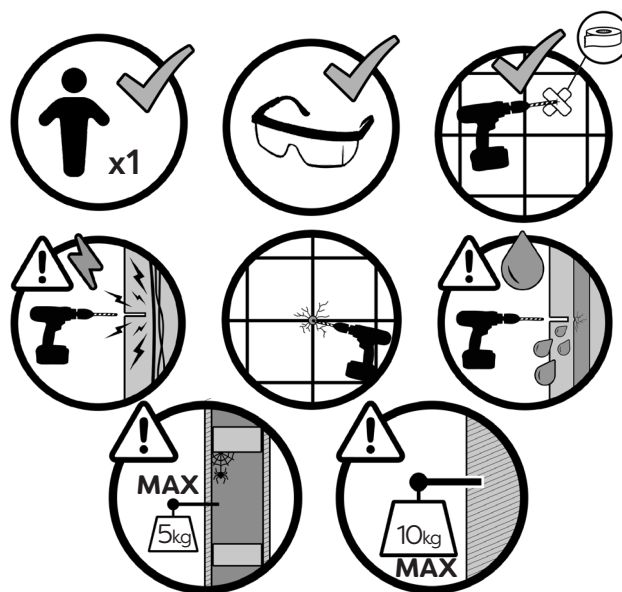
USB Charger: 5Vdc 10W (2A MAX)

Wireless Speakers: 12Vdc 15W

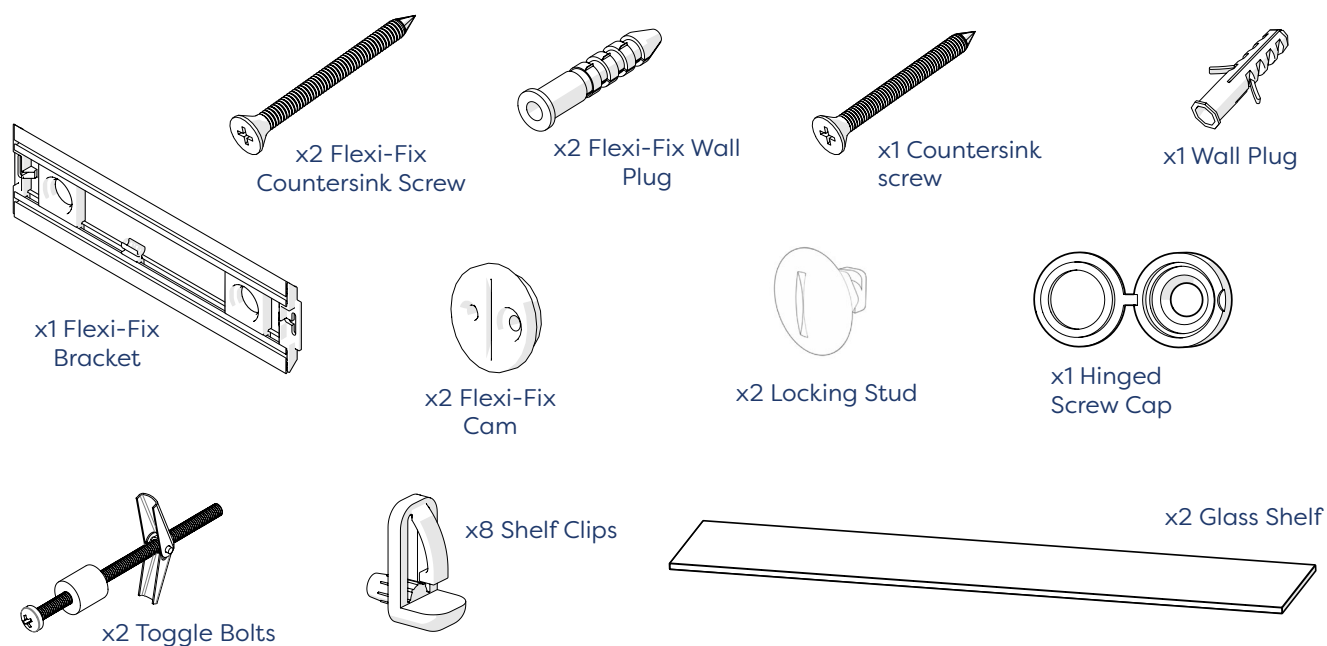
Ingress Protection: IP44

PRODUCT FITTING

IMPORTANT! : Before attempting to install or use this product, check that it will fit and function in the desired location.



WALL FIXING PACK



IMPORTANT WARRANTY INFORMATION

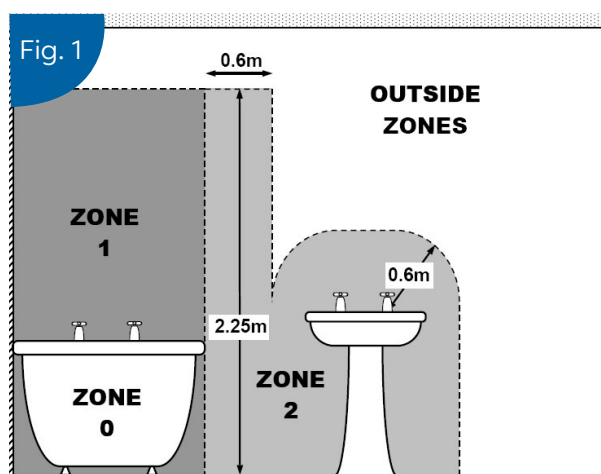
In some circumstances the Building Regulations 2010 require the installer to give the occupier of the premises in which this product has been installed a certificate to confirm that the requirements of regulations 4 and 7 have been satisfied, or the installation of this product must be inspected and tested by the Local Authority Building Control Department who will issue a compliance certificate.

A copy of this certificate may be required for certain warranty claims. Failure to provide a copy of the certificate may invalidate the warranty. This does not affect your statutory rights.

We recommend that you make yourself aware of the Regulations before you undertake any work and if you require clarification you should contact your Local Authority Building Control Department.

POSITIONING THE CABINET

1. The cabinet is rated IP44 and must only be installed with the connection to the domestic mains electrical supply in the Outside Zones, as shown in **Fig. 1**.
2. Ensure that the access to the domestic mains electrical supply is located behind the intended mounting position for the cabinet and unobstructed by the mounting brackets.

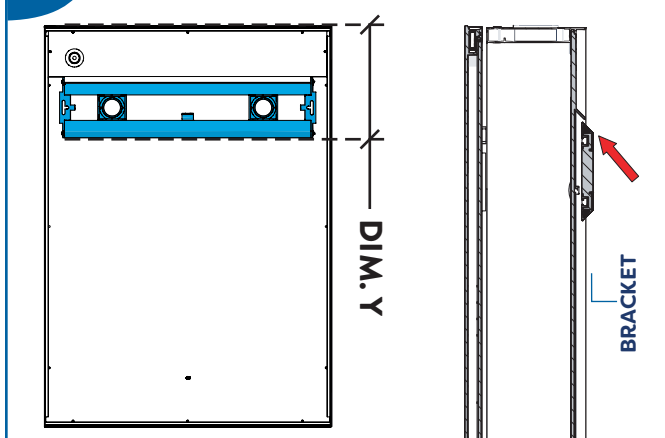


SECTION 2 - MOUNTING USING FLEXI-FIX

BEFORE INSTALLING THE WALL BRACKET, ENSURE THAT THE SAFETY WARNINGS ARE FOLLOWED.

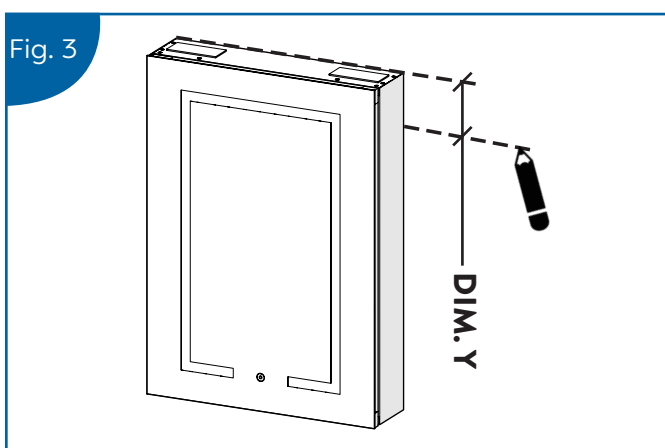
1. Place the Flexi-Fix bracket onto the support slot on the back of the cabinet. Make a note of the distance (DIM. Y) from the bottom edge of the bracket to the top edge of the cabinet - this will help you when mounting your cabinet. (See Fig. 2)

Fig. 2



2. Carefully hold your cabinet in the desired location against the wall. Using a pencil, draw a reference line along the top edge of the cabinet. Use the bracket distance you measured earlier to draw a reference line where the bottom of your Flexi-Fix bracket will be. (See Fig. 3)

Fig. 3



3. Place the bottom edge of the Flexi-Fix bracket onto the lower reference line. Identify the type of wall you are mounting to.

If fitting to a **STUD WALL**: Adjust the sliding brackets in line with studs. Mark the hole centres with a pencil.

(See Fig. 4A) Continue to **Step 5**.

If fitting to a **SOLID WALL**: Move the sliding brackets roughly 25mm from the ends of the Flexi-Fix bracket. Mark the hole centres with a pencil. (See Fig. 4B) Continue to **Step 4**.

For **CAVITY** or **PLASTERBOARD WALLS**: Move the sliding brackets roughly 25mm from the ends of the Flexi-Fix bracket. Mark the hole centres with a pencil. Follow the "Toggle Bolt Installation" section on **Page 7**. (See Fig. 4B)

Fig. 4A

STUD WALL

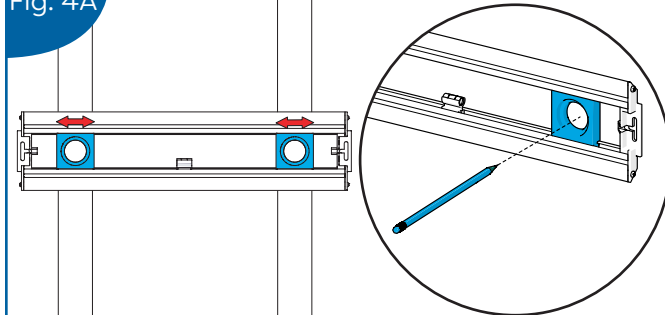
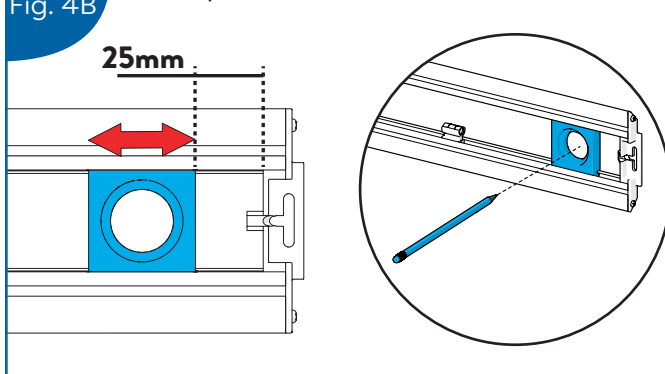
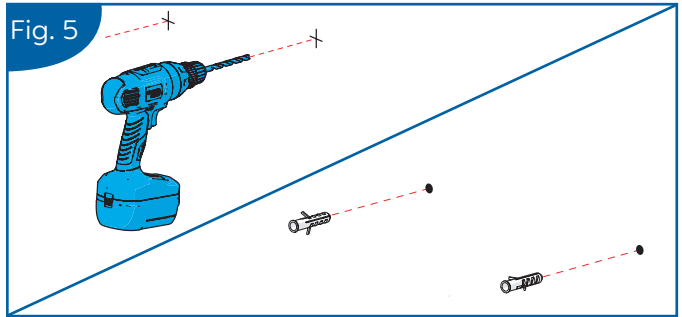


Fig. 4B

CAVITY, PLASTERBOARD AND SOLID WALLS



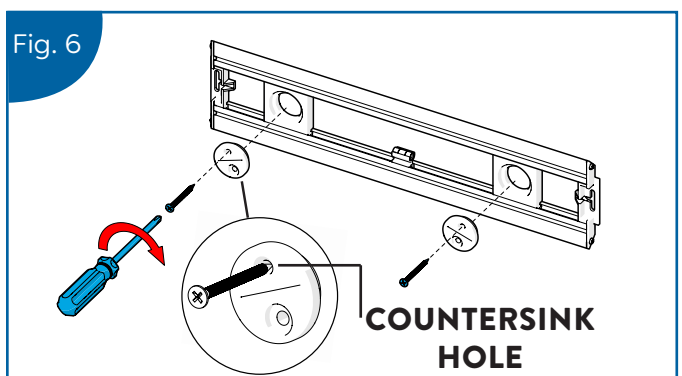
4. Drill the marked hole centres with an 8mm drill bit to a depth of 40mm. Insert the Flexi-Fix wall plugs level with the surface of the wall. If you are fitting to a tiled surface, insert the Flexi-Fix wall plugs below the surface of the tile to avoid cracking the tiles. (See Fig. 5)



5. Insert the countersink screws through the two Flexi-Fix cams and loosely secure the Flexi-Fix bracket to the wall.

(See Fig. 6)

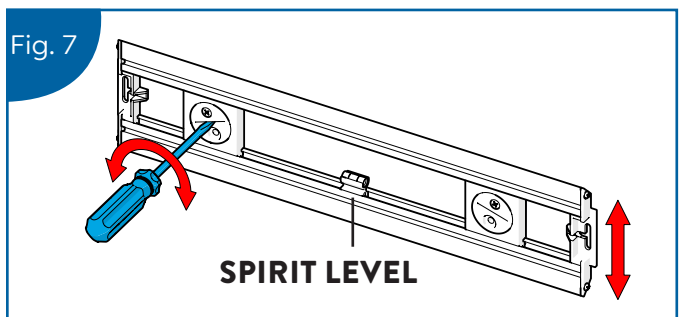
Note: Use the countersink holes in the cam.



6. With the Flexi-Fix bracket loosely attached to the wall, adjust for height and level by rotating the two outer cams with a flat head screwdriver. Once complete, fully tighten the mounting screws to securely fasten the Flexi-Fix bracket into position. **DO NOT OVERTIGHTEN.**

(See Fig. 7)

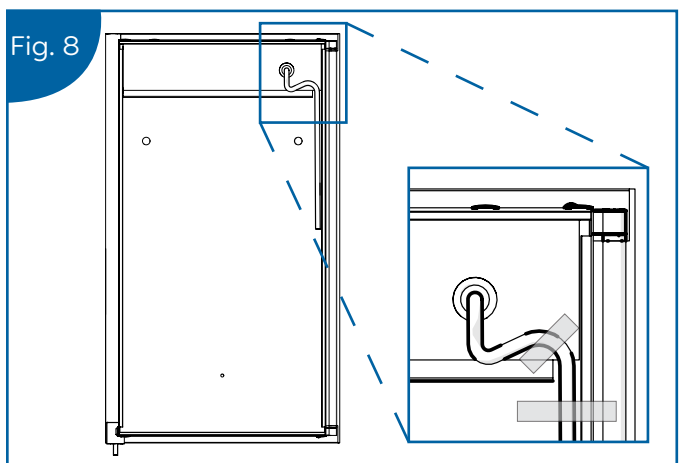
Note: Use the attached spirit level as a guide.



7. Pass the power cable through the gap of the hanging bracket and the side of the cabinet. Use tape to secure the cable in place and continue with the installation steps.

(See Fig. 8)

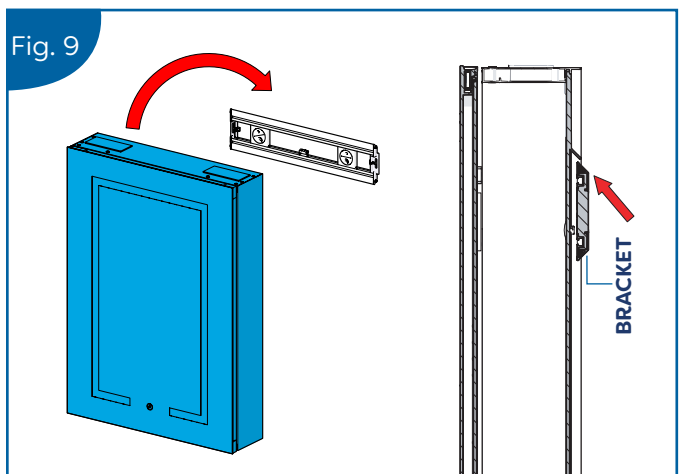
Note: The cable must stay flat against the back of the cabinet.



8. Hang the cabinet onto the Flexi-Fix bracket. Ensure the cabinet has securely located onto the bracket before letting go.

(See Fig. 9)

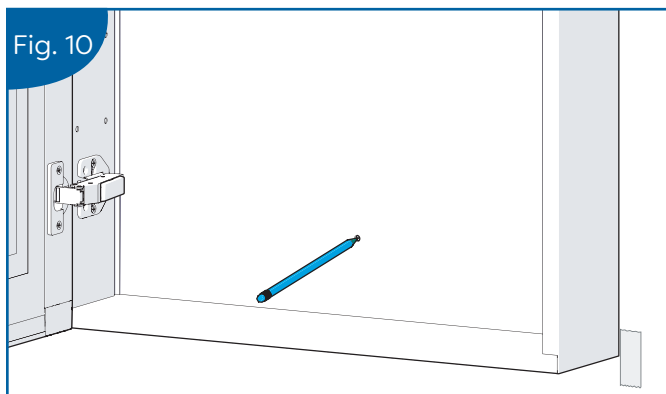
Note: If the cabinet is not level or in the wrong position slacken off the Flexi-Fix bracket screws and repeat step 6 to readjust.



9. Mark the centre of the screw hole position on the wall surface using a pencil.

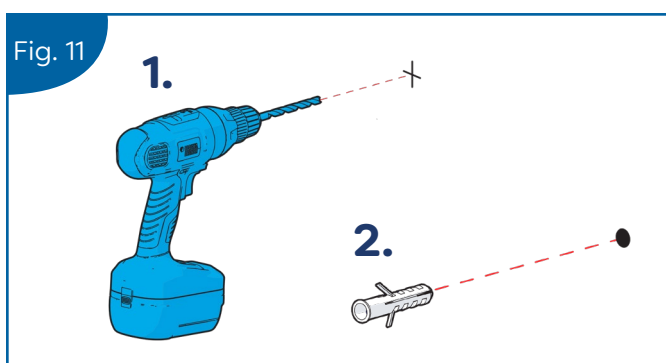
(See Fig. 10)

Note: Mark the corner of the cabinet with masking tape to help re-alignment of the screw holes when re-hanging the cabinet. (Check suitability of wall surface before applying the masking tape.)



10. Remove the cabinet from the wall. Drill the marked hole with a 6mm diameter drill bit to a depth of 40mm. Insert the wall plug level with the surface. If you are fitting to a tiled surface, insert the wall plug below the surface of the tile to avoid cracking the tiles.

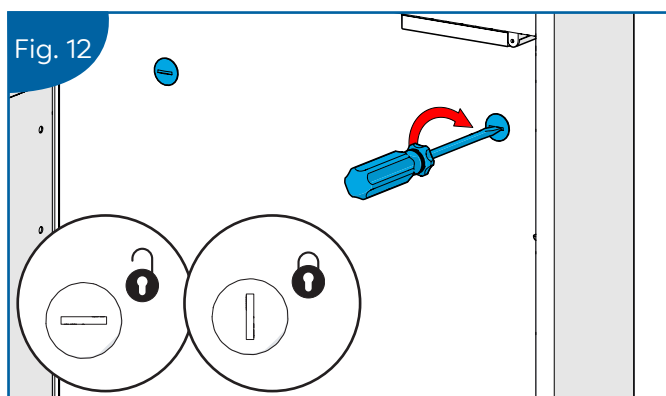
(See Fig. 11)



*** Refer to SECTION 5 - CONNECTING THE ELECTRICAL SUPPLY before proceeding to step 11 and securing the cabinet. ***

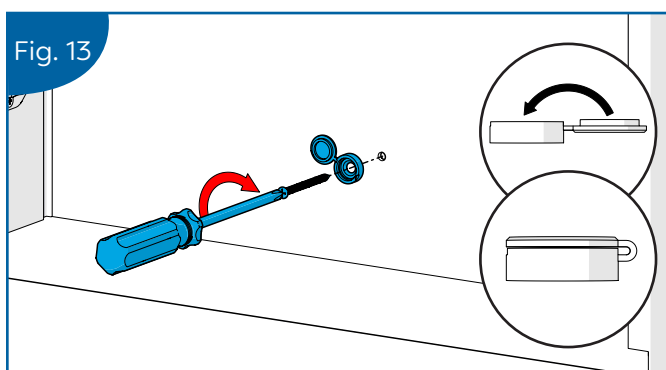
11. Re-hang the cabinet onto the Flexi-Fix bracket and align the lower screw fixing hole with the wall plug. Then secure the cabinet in position by inserting the two locking studs through the holes inside the top of the cabinet and rotate the studs 90° clockwise to lock in position. (See Fig. 12)

Note: Use the corner tape marks as a guide when re-hanging the cabinet.



12. Insert the countersink screw through the hinged screw cap. Secure the screw in place using a cross head screwdriver. **DO NOT OVERTIGHTEN.** Fold over and clip into place the cover cap over the screw and press in, to secure in place.

(See Fig. 13)



FOR HINGE ADJUSTMENT CONTINUE TO PAGE 8, SECTION 4.

SECTION 3 - TOGGLE BOLT INSTALLATION

Follow these steps when using toggle bolts for cavity walls or plasterboard. This process replaces **Step 4 & 5** in **Section 2**. Once complete continue with **Step 6**.

i) Drill marked holes with an 11mm drill bit.

Note: If you are fitting the product to a tiled surface, a ceramic drill bit should be used.

ii) Dismantle the toggle bolts by unwinding the spring loaded wall braces and plugs from each threaded bolt. (See Fig. 14)

iii) Insert the threaded bolts through the Flexi-Fix cams using the counterbored holes and reattach the plugs and spring loaded braces onto the bolts from the back of the cams. Insert the cams and toggle bolts into the Flexi-Fix bracket. (See Fig. 15)

(See Fig. 15)

iv) Push the spring loaded wall braces on the toggle bolts through the drilled holes.

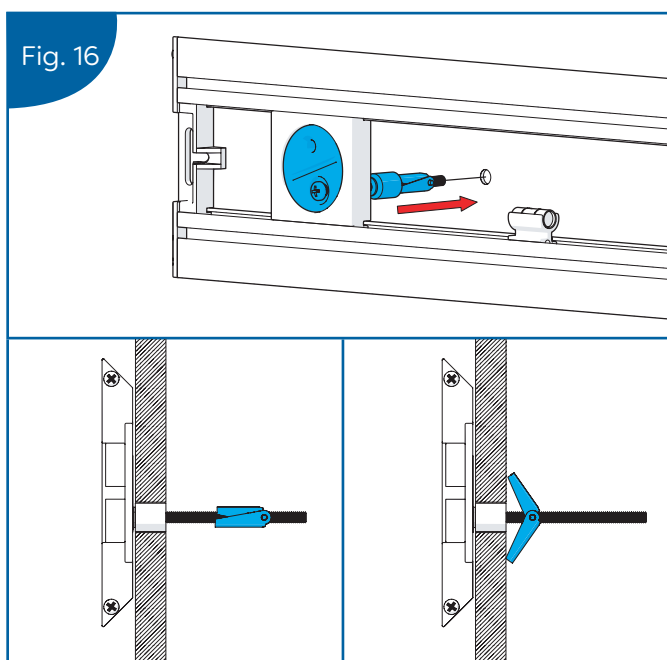
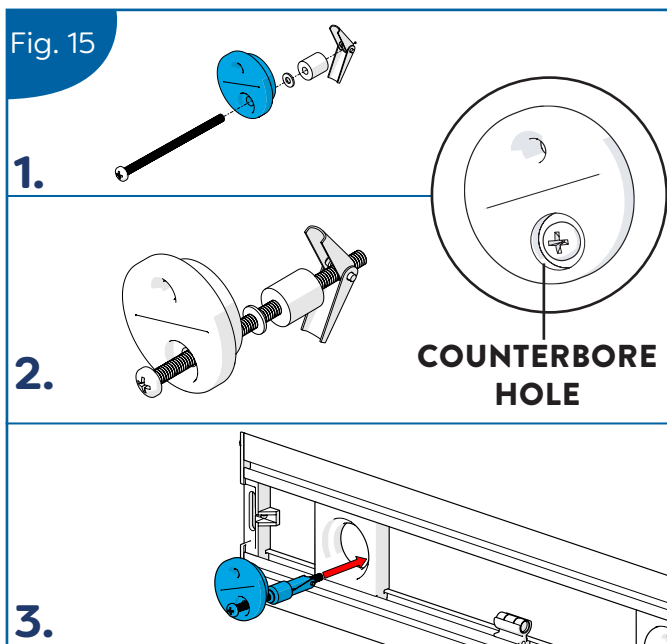
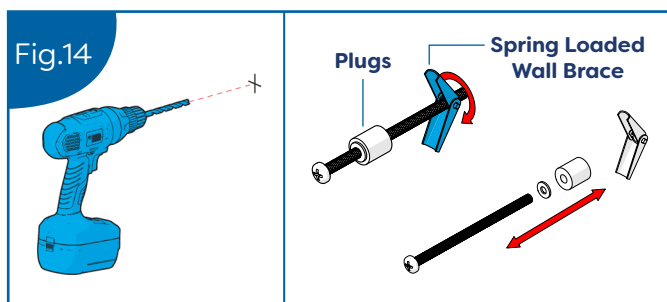
Note: Please ensure there is sufficient distance for the wall braces to pass through the drilled hole in order for them to spring open and support the weight of the cabinet when hung in position.

Loosely secure the Flexi-Fix bracket to the wall surface using a cross-head screwdriver. Ensure the plugs are pushed into the drilled hole to fill the void between the drilled holes and the toggle bolts.

The toggle bolt can be tightened by gently pulling the Flexi-Fix bracket forward as the bolt is rotated. This applies pressure to the spring loaded clips against the inside of the wall surface holding them in position as the bolt tightens.

(See Fig. 16)

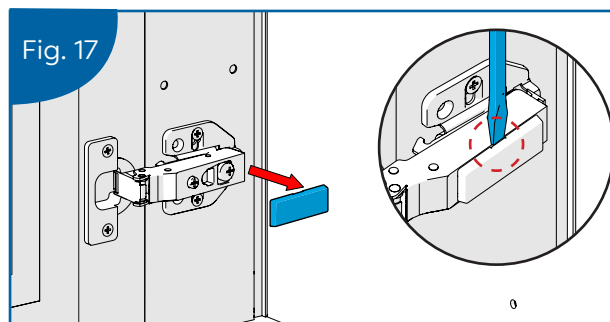
Continue from STEP 6 on the main instruction leaflet



SECTION 4 - HINGE ADJUSTMENT AND FINAL ASSEMBLY

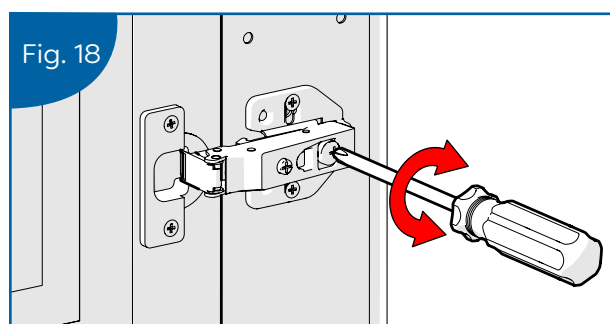
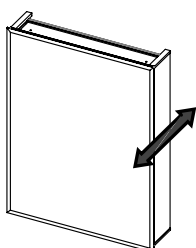
i) Remove the screw cap by pulling it outwards.

(See Fig. 17)



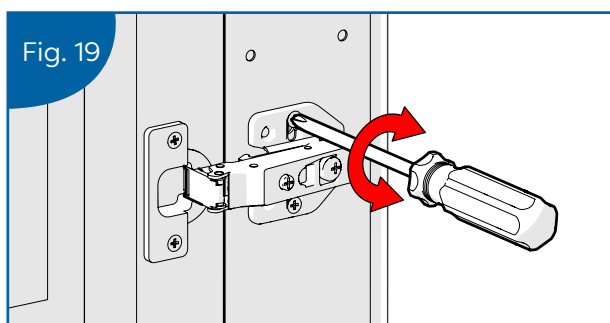
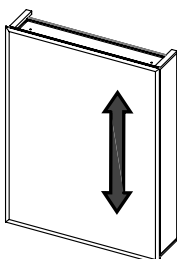
ii) To move the door position forwards adjust as shown.

(See Fig. 18)



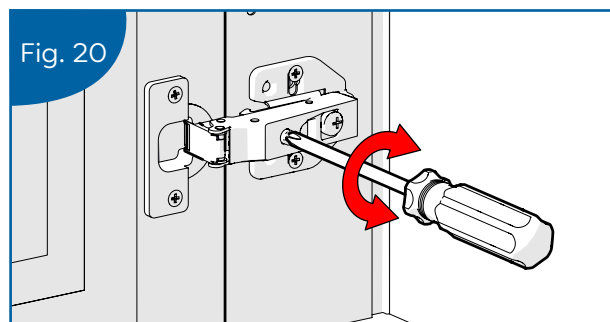
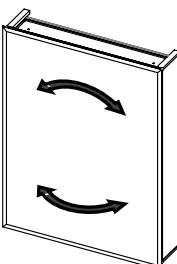
iii) To move the door position up or down adjust as shown.

(See Fig. 19)



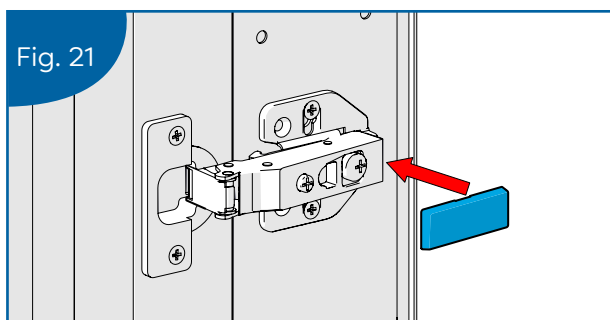
iv) To move the door position left or right adjust as shown.

(See Fig. 20)



v) Clip the screw cap back into place by pushing it into the slot around the screws.

(See Fig. 21)

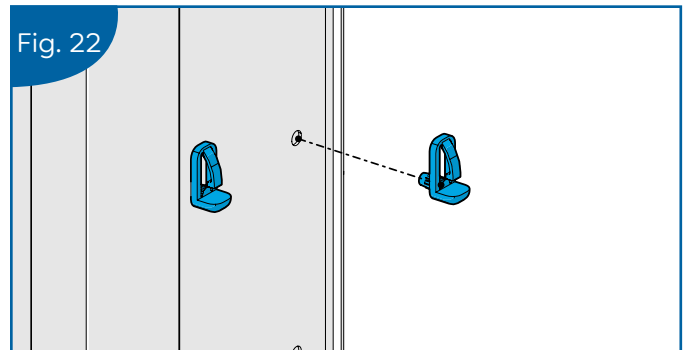


SECTION 4 (CONTINUED) - HINGE ADJUSTMENT AND FINAL ASSEMBLY

1. Insert shelf clips into the mounting holes of the cabinet. A number of shelf positions can be used.

(See Fig. 22)

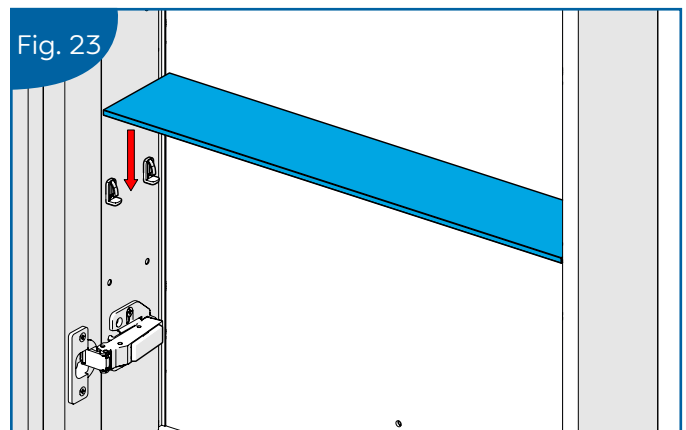
Note: Ensure the shelf clip is orientated correctly.



2. Place the glass shelf onto the shelf clips and push down to clip into place.

(See Fig. 23)

Note: Ensure the glass shelf is fully engaged with the shelf clip and securely held in place.



SECTION 5 - CONNECTING THE ELECTRICAL SUPPLY

REMOVE THE CABINET FROM THE WALL.

ENSURE THAT THE DOMESTIC ELECTRICAL MAINS SUPPLY TO WHICH THE CABINET IS TO BE CONNECTED IS TURNED OFF.

Connect the flexible mains supply cable on the cabinet to the domestic electrical mains supply ensuring that:

- The Live (Brown) conductor is connected to the Live on the domestic electrical mains supply.
- The Neutral (Blue) conductor is connected to the Neutral on the domestic electrical mains supply.
- The Earth (Green/Yellow) conductor is connected to the Earth/Ground on the domestic electrical mains supply.

Note: Connection of the electrical supply **MUST ONLY** be carried out by a competent person in accordance with the Building Regulations 2010 and connection to the fixed wiring of the mains electrical supply must comply with the current revision of the IET Wiring Regulations BS 7671.

Hang the cabinet using **Step 8** in **SECTION 2** and turn the electrical mains supply back on. Once the cabinet is securely hung and the power is turned on, proceed to **Step 11**.

SECTION 6 - OPERATING THE CABINET

FOLLOW THESE INSTRUCTIONS TO OPERATE THE CABINET FROM OFF:

1. Single **TOUCH** to turn **ON** the light and activate the heated demister pad.
2. Single **TOUCH** to select the LED temperature (Warm white 3000K or cool white 6500K)
3. Single touch to turn **OFF**

FOLLOW THESE INSTRUCTIONS TO CHANGE THE LIGHT INTENSITY FROM ON:

1. Hold button to begin the dimming function, release when the desired setting is achieved.

Note: When the LED gets to the maximum brightness setting, it will stop. Release, then press and hold the button to go in the opposite direction, where it will stop at the maximum or minimum brightness setting.

FOLLOW THESE INSTRUCTIONS TO OPERATE THE WIRELESS SPEAKERS.

FROM ON:

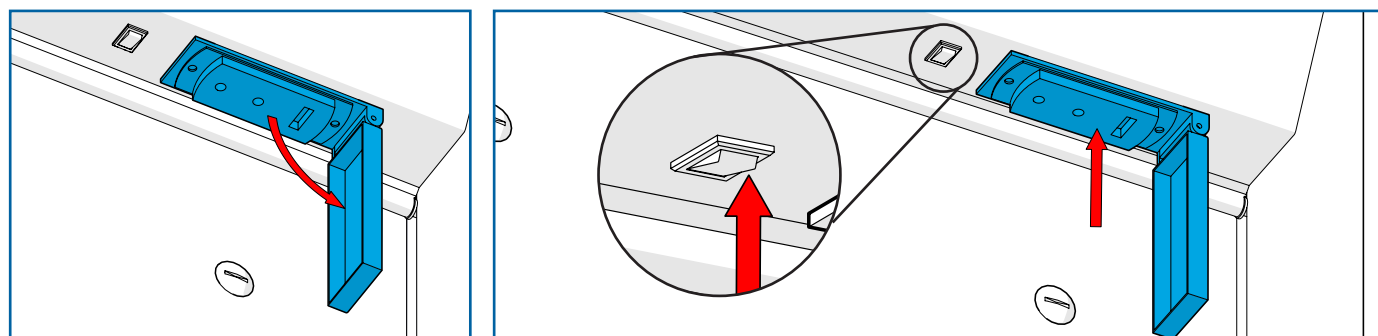
To pair your device for the first time, turn on the device's pairing signal and look for the cabinet, which will be labelled **CABINET BT** and connect to it. The cabinet will chime to indicate to that it has successfully paired to the device.

Once paired, play music from your device and the audio will play through the cabinet's dual speakers. Speakers can be muted and unmuted by tapping the device and the volume can also be controlled by using the device.

SECTION 7 - USB AND SHAVER SUPPLY UNIT

NOTE: The supply unit is found inside the cabinet and is suitable for use with electric razors, toothbrushes, USB devices and similar low power appliances only.

Operation: Flip open socket cover and plug in desired device. The socket can be turned on and off using the rocker switch.



SECTION 8 - TECHNICAL INFORMATION

PRODUCT REPAIR

In the unlikely event that your shaver unit or LED lighting becomes faulty, they can be replaced by a qualified electrician. Detailed repair instructions (REPO0015.pdf) can be downloaded from www.croydex.com or requested from info@croydex.co.uk

PRODUCT RECYCLING

This product has been designed so that electrical components can be easily removed by the consumer for recycling at end of life. A detailed Electronic and Electrical Waste Recycling Guide (WEEE00015.pdf) can be downloaded from www.croydex.com



THIS PRODUCT COMPLIES WITH THE REQUIREMENTS OF:

The UK Electrical Equipment (Safety) Regulations 2016

The UK Electromagnetic Compatibility Regulations 2016

The UK Restriction of the Use of Certain Hazardous Substances in Electrical and Electronic Equipment Regulations 2012

The EU Low Voltage Directive (LVD) 2014/35/EU

The EU Electromagnetic Compatibility (EMC) Directive 2014/30/EU

The EU Restriction of Hazardous Substances (RoHS) Directive 2011/65/EU

The following UKCA and CE Declarations of Conformity can be downloaded from www.croydex.com or requested from info@croydex.co.uk:

UKCA electrical safety and EMC (UKCA-DoC-00017-Safety-RED-EMC.pdf)

UKCA RoHS (UKCA-DoC-00017-RoHS.pdf)

EU CE LVD and EMC (CE-DoC-00017-LVD-RED-EMC.pdf)

EU CE RoHS (CE-DoC-00017-RoHS.pdf)

UK: Croydex, Central Way, Andover, Hampshire, SP10 5AW, UK.

EU: MIL, Unit 8 Purcellsinch Ind Est, Dublin Road, Kilkenny, R95 HP71, Ireland

Web: www.croydex.com