

CARAGH RAISED TOILET SEAT

WL4100##H
WL4110##H

CONTACT DETAILS

UK: Croydex, Central Way, Andover,
Hampshire, SP10 5AW, UK

EU: MIL, Unit 8 Purcellsinch Ind Est,
Dublin Road, Kilkenny, R95 HP71, Ireland

Tel: +44 (0)1264 365881
Email: info@croydex.co.uk
www.croydex.com



**ALL PRODUCT DIMENSIONS DETAILED IN THIS
INSTALLATION AND MAINTENANCE MANUAL ARE
APPROXIMATE**

**ALL ILLUSTRATIONS OF THE PRODUCT ARE FOR
REFERENCE ONLY. COMPONENTS SUPPLIED WITH
INDIVIDUAL PRODUCTS MAY DIFFER**

Always follow the instructions provided to ensure that your product is assembled and fitted safely, and retains its high quality finish.

ALWAYS RETAIN THIS MANUAL FOR FUTURE REFERENCE



**ALWAYS CHECK THE PACKAGING FOR FIXINGS AND PARTS BEFORE
THROWING AWAY AND RECYCLING.**

**ENSURE YOU HAVE ALL THE FIXINGS AND PARTS BEFORE ATTEMPTING TO
ASSEMBLE OR FIT THIS PRODUCT.**

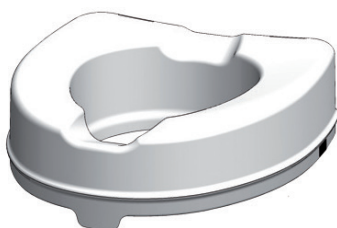
SAFETY & PRODUCT CARE

1. **ALWAYS** ensure the toilet seat is correctly assembled in a stable position before use.
2. **DO NOT** use the toilet seat for a different purpose from the intended use.
3. **DO NOT** use the toilet seat if damaged or altered in any way.
4. **DO NOT** modify the toilet seat in any way.
5. **ALWAYS** sit centrally on the toilet seat, **DO NOT** apply load to just one side as this may cause the toilet seat to lose grip.
6. **DO NOT** stand on the seat.
7. Ensure the underside of the seat is fully supported by the toilet pan.
8. Ensure the seat is still locked in place after cleaning.
9. To retain the best quality finish, clean product with a soft cloth and a mild soap solution applied directly to the cloth.
10. **DO NOT** use abrasive or chemical cleaners as they may damage the surface of the toilet seat or fixing brackets.

CONTENTS

WL4100##H

A x1
RAISED TOILET
SEAT

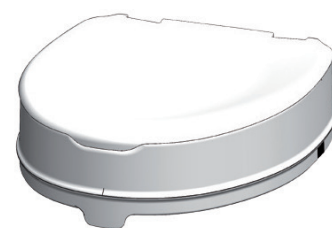


B x2
LOCKING CLAMP



WL4110##H

A x1
RAISED TOILET
SEAT

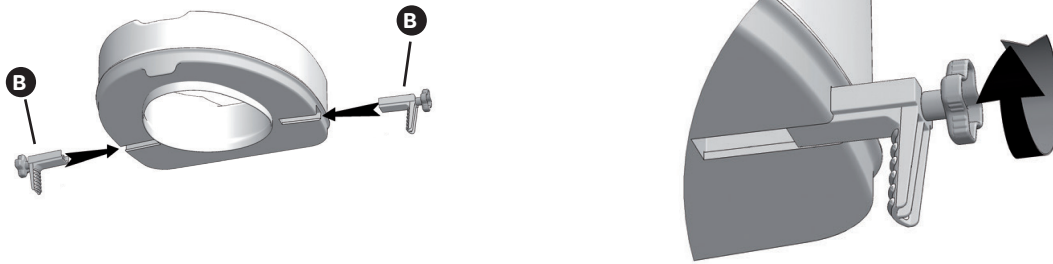


B x2
LOCKING CLAMP



- 1.** Locate the locking clamps (B) into the recesses found on both sides of the raised toilet seat (A). Twist the screws on the locking clamps (B) a small amount clockwise to engage them into the raised seat. **(See Fig. 1)**
IMPORTANT! Do not tighten the locking clamps (B) all the way as this will mean the raised toilet seat (A) will not fit on the toilet pan.

fig. 1



- 2.** Loosely align the locking clamps (B) with the sides of your toilet pan. Rest the raised toilet seat (A) onto the toilet pan. **(See Fig. 2)**

Note: Ensure the locking clamps (B) are located on the outside edge of your toilet pan and do not interfere with the pan.

fig. 2



- 3.** Push the raised toilet seat (A) back until the front tab contacts the front of the pan. Turn both the locking clamp (B) screws clockwise to grip the seat onto the edge of the pan. **(See Fig. 3)**

Note: You may need to adjust the left and right locking clamps to make the seat central.

IMPORTANT! You must ensure the seat is securely fastened with the locking clamps (B) before use.

fig. 2

