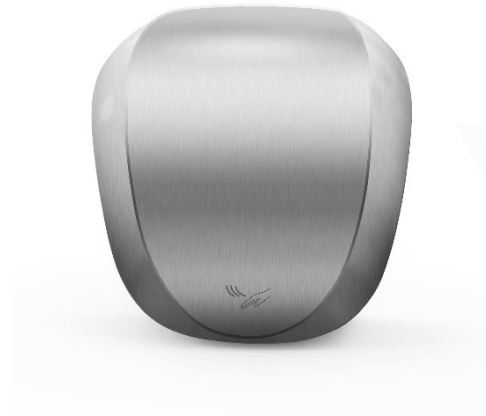


Models – 475451 (White) & 475452 (Satin)



Product Description

A robust, energy saving dryer suitable for many applications such as factories, shops, hotels, restaurants, airports and railway stations. Generally these dryers can be used in high usage areas where durability and energy efficiency is important.

Key Features

- 10-12 seconds drying time
- Blue LED for hand drying range
- Powerful Operation
- Intelligent Heating Element.
Automatically turns off if ambient temperature is above 25°C.
- Touch Free
- Includes an antibacterial HEPA Filter. Kills 99.9% of germs
- Brushed motor- 20000rpm

Product Range Details

Rated at 1.20kW- 1.45kW at 220- 240V.
 Supply Voltage - 220-240V 50Hz
 Heating Element - 650-750 W
 Motor - 550W-650W

Technical Specification

Insulation Earthed Class I

Third Party Approved, RoSH
 Compliant CE marked in accordance
 with all the relevant EEC
 Harmonised Documents

IPX1 Rated

Warm Air Speed Output 70m/s

Sound Level 68.5dBa @ 1 metre

Dimensions

Height	-	312mm
Width	-	225mm
Depth	-	172mm