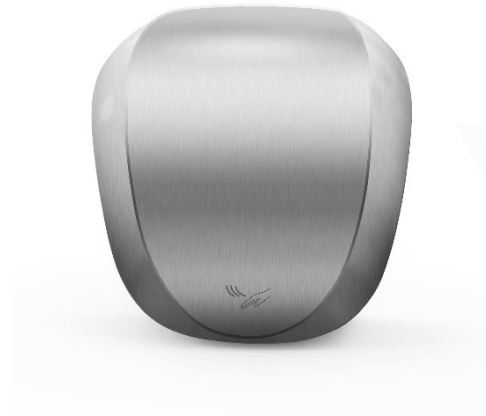


## Models – 475451 (White) & 475452 (Satin)



### Product Description

A robust, energy saving dryer suitable for many applications such as factories, shops, hotels, restaurants, airports and railway stations. Generally these dryers can be used in high usage areas where durability and energy efficiency is important.

### Key Features

- 10-12 seconds drying time
- Blue LED for hand drying range
- Powerful Operation
- Intelligent Heating Element.  
Automatically turns off if ambient temperature is above 25°C.
- Touch Free
- Includes an antibacterial HEPA Filter. Kills 99.9% of germs
- Brushed motor- 20000rpm

### Product Range Details

Rated at 1.20kW- 1.45kW at 220- 240V.

Supply Voltage - 220-240V 50Hz

Heating Element - 650-750 W

Motor - 550W-650W

### Technical Specification

Insulation Earthed Class I

Third Party Approved, RoSH  
Compliant CE marked in accordance  
with all the relevant EEC  
Harmonised Documents

IPX1 Rated

Warm Air Speed Output 70m/s

Sound Level 68.5dBa @ 1 metre

### Dimensions

Height	-	312mm
Width	-	225mm
Depth	-	172mm