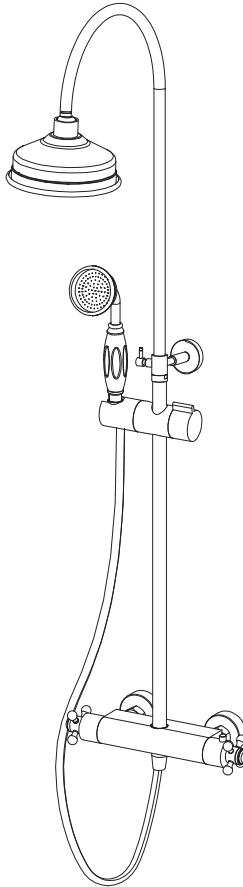


CHATSWORTH

Traditional Thermostatic Shower



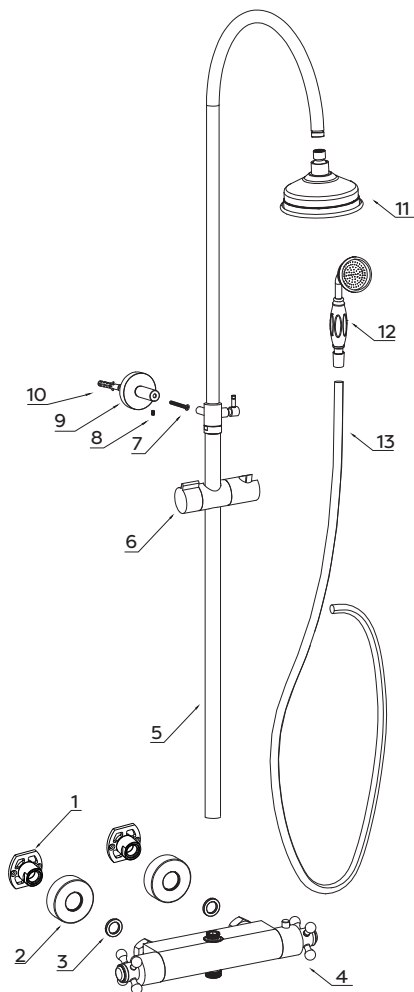
Fitting Instructions

Please follow them carefully and
leave this manual with end user

Before you begin:

1. **We recommend that this product is installed by a qualified tradesperson.** Victorian Plumbing Ltd. accept no liability for products incorrectly installed, or where the correct testing procedures have not been adhered to, thus resulting in the escape of water and consequential damage.
2. Ensure the incoming mains water supply is switched off prior to commencing the installation.
3. Observe all local plumbing and building codes & regulations.
4. **Check the chosen wall space for any pipes/cables prior to drilling.**
5. Unpack the product then read these instructions before proceeding. Inspect the product for damage. If any damage is found, contact our Customer Relations team.

Component Listing:



1. Fixing Bracket (X2)
2. Cover Plate (X2)
3. Seal Washers (X2)
4. Valve Body (X1)
5. Slider rail (X1)
6. Shower Bracket (X1)
7. Wall screw (X1)
8. Grub Screw (X1)
9. Fixing Plate (X1)
10. Rawl Plug (X1)
11. Shower Head (X1)
12. Shower Handset (X1)
13. Hose (X1)

Tools Required

Ensure the appropriate PPE is used during installation



Power Drill



Spirit Level



Wrench



Screwdriver



PTFE Tape



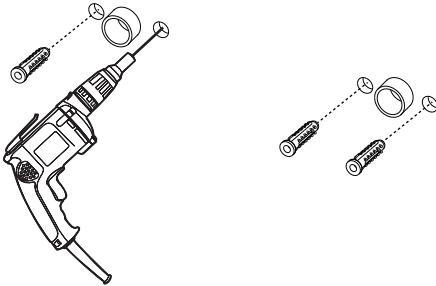
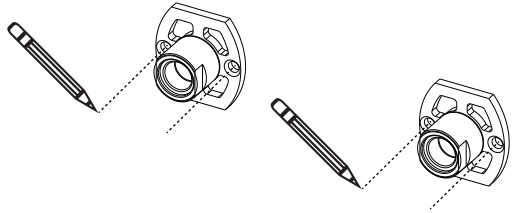
Silicone Sealant

Installation Steps:

- **Note!** When installing the pipework, ensure it is set at the correct distance apart (150mm) and securely fixed in place.
- Diagrams are for illustration purposes only. Your shower may superficially differ from this drawing however the installation guide steps still apply.

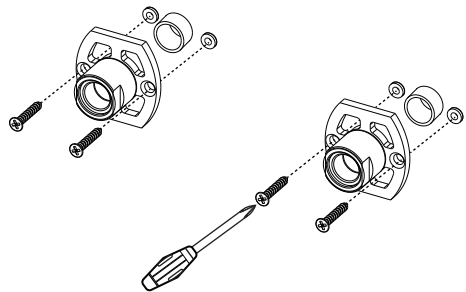
Step 1:

- Place the 'Fixing Brackets' over the hot & cold outlets then using a pencil, mark the fixing points to the wall ready for drilling. Ensure the markings are level.



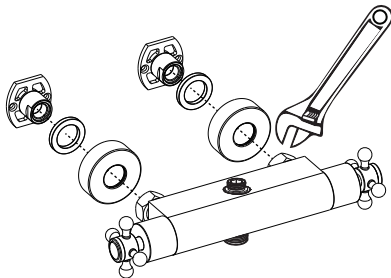
Step 2:

- Place the 'Fixing Brackets' to one side. Using an appropriate sized drill bit, carefully drill the holes in the wall. Ensure that there are no hidden pipes/cables behind the wall markings. Insert the 'Rawl Plugs' provided into the drilled holes.



Step 3:

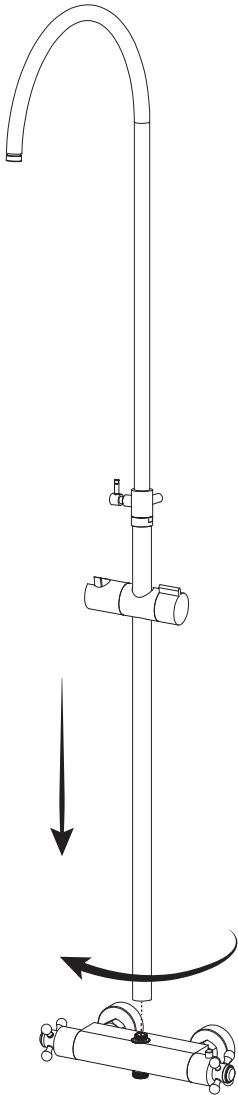
- Place the 'Fixing Brackets' over the outlets. Using the 'Screws' provided, fix the brackets to the wall by screwing into the 'Rawl Plugs'. Check that the brackets are level using a spirit level.



Step 4:

- Slide the 'Washers' and 'Cover Caps' over the 'Fixing Plates'. Connect the 'Bar Valve' to the brackets, tighten the 'Bar Valve' with a wrench.

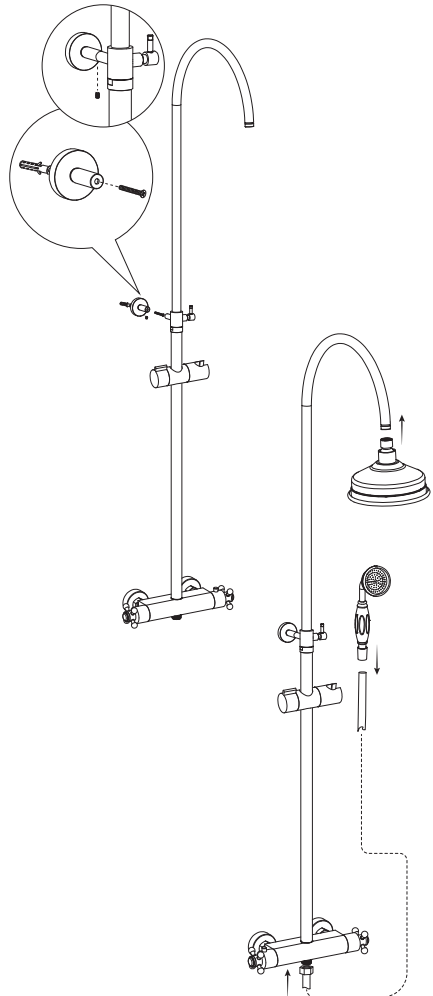
Step 5:



- Install the 'Slider rail' to the 'Valve Body'.
- When installing the Shower Unit please ensure that there is a minimum of 118cm height clearance above the shower valve to allow for the riser pipe and overhead shower head to be fitted.

Step 6:

- Confirm the position of the 'Fixing Plate', drill a hole in the wall for the fixing plate. Ensure that there are no hidden pipes/ cables behind the wall marking. Use the 'Wall Screw' provided to fix the fixing plate onto the wall.
- Connect the 'Slider Rail' to the 'Fixing Plate' using the 'Grub Screw' provided and tighten with an allen key.
- Install the 'Shower Head' and 'Handset'. Turn on the water supply, check all joints and connections for any leaks.



Changing Thermostatic Cartridge

If you need to change the thermostatic cartridge, Please follow these steps:

1. Turn off the mains water supply, make sure the flow handle is turned off.
2. Take off the handle cap and remove the screw (Fig. 1).
3. Remove the temperature location ring (Fig.2), loosen the grub screw with an allen key and take out the cartridge (Fig.3).
4. Put the temperature location ring on the new cartridge (Fig. 4), make sure the temperature location ring is on the same line with the mark on the cartridge. Adjust the cartridge screw hole to line up with the valve screw hole (Fig. 5), then place the cartridge inside the valve. Tighten the cartridge with a grub screw (Fig. 6).
5. Turn on mains water supply, check the water flow and temperature control.

Fig. 1

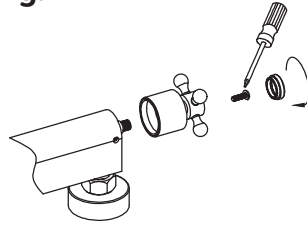


Fig. 2



Fig. 3

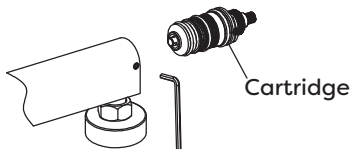


Fig. 4

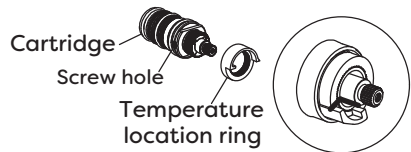


Fig. 5

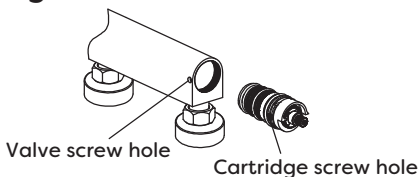
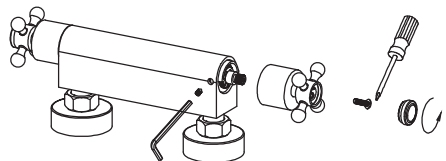


Fig. 6



Notice:

Make sure the cartridge is at the original state and isn't turned, if the cartridge has been turned during assembling you can turn it back to its original state. Turn the mark on the cartridge back to the same line.

Check the 38°C mark on the handle and align the 38°C with the line mark on the cartridge. Assemble the handle with screw (Fig. 6).

Changing Flow Control Valve

If you need to change the thermostatic cartridge, Please follow these steps:

1. Turn off the mains water supply.
2. Take off the handle cap and remove the screw (Fig. 1).
3. Loosen the nut with a wrench and take out the flow control valve (Fig. 2)
4. Place the new flow control valve into the valve body and tighten the nut with a wrench (Fig. 3).
5. Turn on the mains water supply and adjust the valve to the off state using the handle (Fig. 4).

Fig. 1

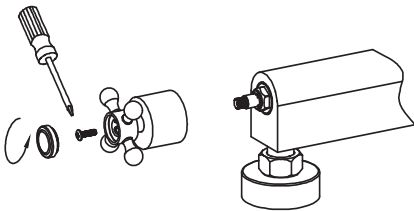


Fig. 2

Flow control valve

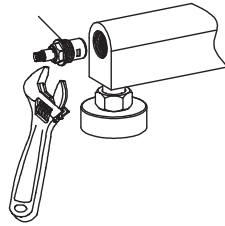


Fig. 3

Flow control valve

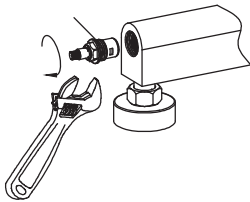


Fig. 4

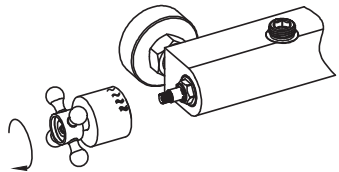


Fig. 5

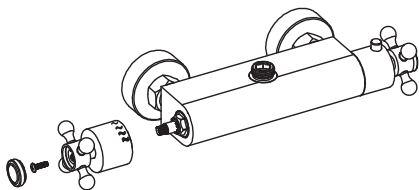
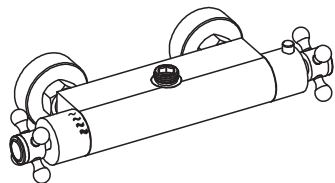
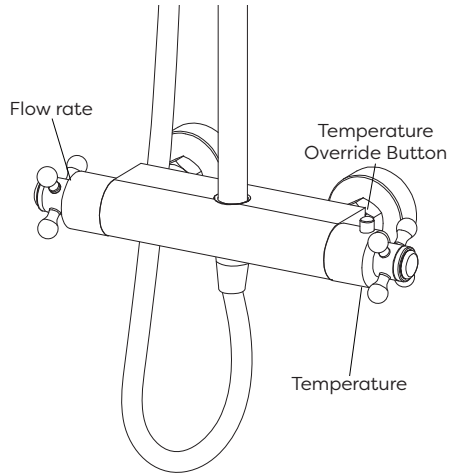


Fig. 6



Opertation:

- Turning the right handle controls the water temperature. To prevent scalding, a safety feature of the shower includes a temperature stop at 38 degrees. To override this function the button on the handle will need to be pressed. If overriding the temperature, when finished please return the handle to below 38 degrees as to ensure the next person using the shower does not risk being exposed to high-temperature water.
- Turning the left handle of the shower, controls the flow rate and turning the handle clockwise will increase the flow to the main shower head. Turning the handle anticlockwise will increase the water flow rate to the shower handset.



Aftercare:

Always clean the surface of shower to keep it bright. **Attention:** please do not use inappropriate tools such as sharp brushes, rough sponges, scouring pads or corrosive detergent to clean the shower. Please clean the shower by wet cloth and soapy water after each time of usage. Then rinse the soap out with clean water and dry with a soft cotton cloth.

Troubleshooting

| FAULT | POSSIBLE CAUSE |
|---|--|
| Shower only runs hot or cold after installation | <ul style="list-style-type: none"> • Hot and cold supplies have been plumbed the wrong direction. • Faulty thermostat. • Insufficient water pressure. |
| Shower does not run hot enough | <ul style="list-style-type: none"> • Check the hot water supply temperature. • Maximum temperature needs adjusting, see temperature adjustment. • Blockage in the hot supply. |
| Hot water in cold supply or vice versa | <ul style="list-style-type: none"> • Check and clean non-return valves. • Check Hot and Cold supplies have not been reversed during installation. |
| Low or no flow | <ul style="list-style-type: none"> • Possible blockage/debris in the system. • Operating conditions are incorrect. • Valve shut off has been activated due to a pressure drop in either the cold or hot supplies. |
| Leaking when in the off position | <ul style="list-style-type: none"> • Debris in the flow control cartridge. • Faulty control cartridge. |
| Fluctuating flow | <ul style="list-style-type: none"> • Dynamic inlet pressure are not balanced. |

Recycling and Disposal:

Please recycle the packaging in accordance with your local government regulations on waste handling and follow the same advice at the end of the products life.

www.victorianplumbing.co.uk