

# Installation instructions



Thank you for purchasing this Victorian Plumbing product. Please follow these care instructions to ensure your product retains its high quality finish  
- and retain this leaflet for future reference.

## Please read the below specification carefully before installation

Note: Please identify all components are present prior to installation.

### Please let the people who has experience and senior to install it

1. Flush the inlet's sediment and other stains
2. The faucet and cold-hot water hose should be connect right, left is hot water, right is cold water
3. When installed with equal strength, avoid overexertion and force to install damage the parts
4. After installation, check each of connector if leaking water, make sure no any water dropping then use normally.

**Notice: The surface of faucet can't be collided or rubbed, don't leave cement and glue and other sundries on the surface of faucet**

### Installation Environment

1. Please make sure the location of electric drill entrance the wall if hiding wire, cable or supply water tube before installation, please ware blinder if used electric tools
2. Inlet water pressure range: 0.1Mpa-0.5Mpa
3. Bathtub faucet pre-embedded install size is 180mm

### Daily Maintain

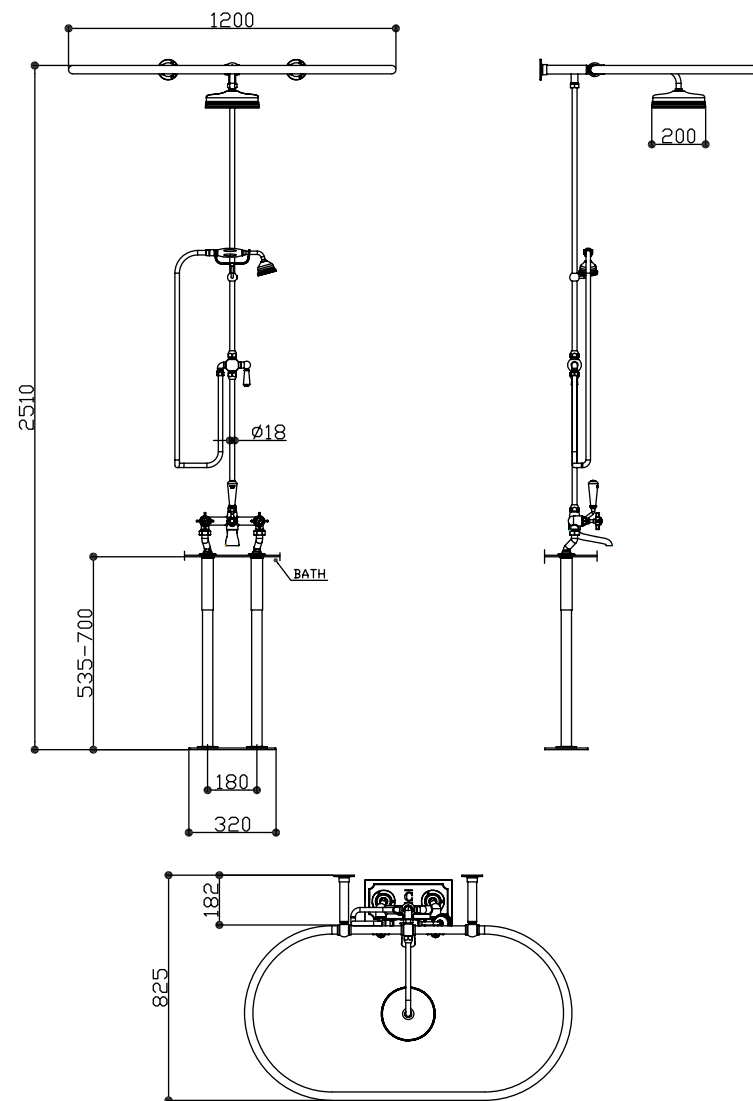
1. Use soft cloth or car wax to scrub frequently
2. Don't use decontamination with acid detergent to scrub so that avoid to damage products

Please Note: Never drill into a wall without checking first for hidden pipes and cables

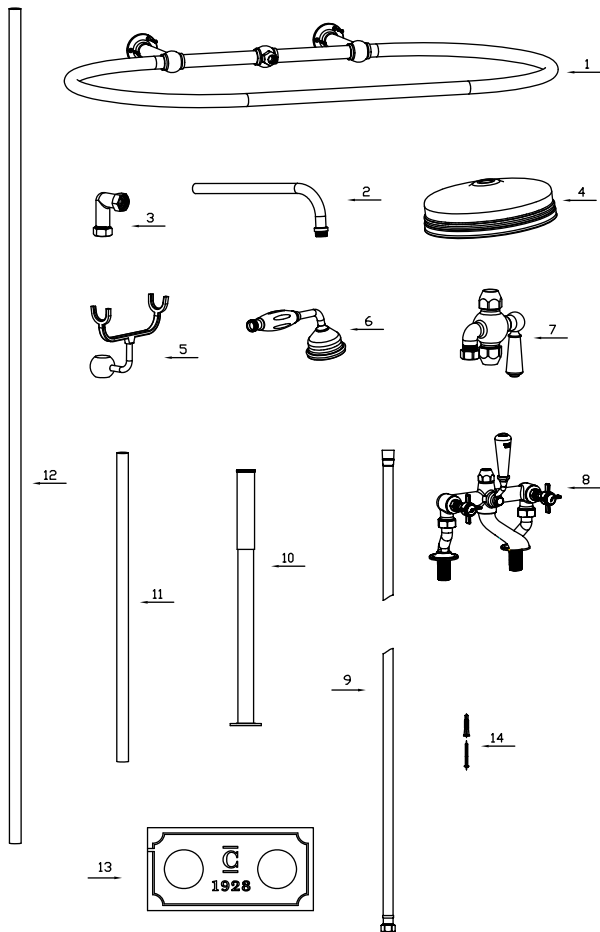
Victorian Plumbing

Diamond House. 41, Stephenson Way. Formby Business Park Formby. England. L37 8EG  
Tel: 0044 800 862 0878

Website: [www.victorianplumbing.co.uk](http://www.victorianplumbing.co.uk)

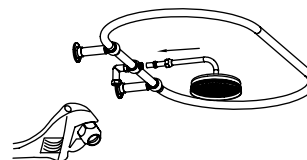


Dimensional Drawing



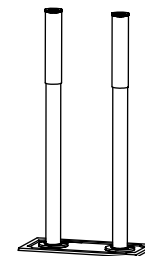
No.	Description	Qty
1	Shower curtain rail kit	1
2	Outlet pipe	1
3	Inlet elbow	1
4	200mm shower head	1
5	Shower bracket	1
6	Shower hand	1
7	Reflux valve	1
8	Bathtub faucet	1
9	1.5m double-lock hose	1
10	Extend pipe	2
11	φ18x0.5m outlet pipe	1
12	φ18x1m outlet pipe	1
13	Square panel	1
14	Screws	12

3



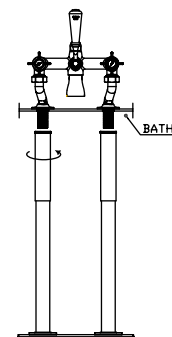
6. Installed into the outlet tube(2) and lock tight, screw nut by wrench and then install top shower head(4)

4



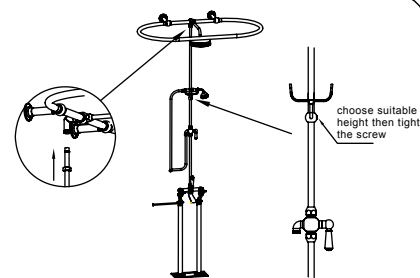
7. Place square panel(13)on the pre-embedded inlet position, place two extend pipe(10) on round hole of panel,set the position and make a mark. use electric drill to drill on the tag hole, put plastic tube(14) into the hole.

5



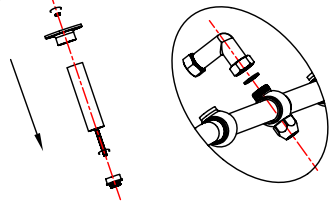
8. Put extend pipe(10) through the hole of bathtub, then lock tight the screw

6



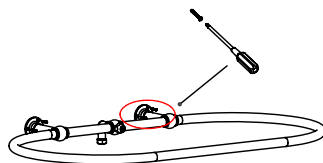
9. Put 0.5mm outlet pipe(11) onto bathtub faucet outlet position(8)lock tight screw, install reflux valve (7)and 1M outlet pipe(12),measure the height, cut it if need and choose right height,put shower bracket(5) through 1M pipe(12),lock tight side screw,then put 1M outlet pipe(12) onto reflux valve (7)and curtain rail outlet(1) lock tight screw nut install 1.5m double-lock hose(14)and hand shower(6)

1

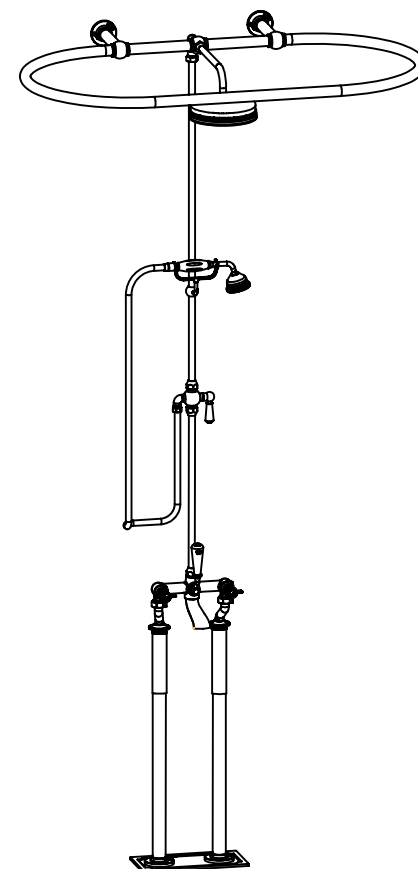


1.Screw passed tube and flange hole and lock tight screw nut.  
2.Right angle inlet elbow(3) thread connect rail inlet mouth, lock tight screw nut and adjust right direction.

2



3.Curtain rail (1) place on pre-hang location and make a mark on the screw hole  
4.Drill on the tag hole by electric drills,then put the plastic tube(14) into the hole  
5.Place curtain rail(1) on the marked location and installed, lock tight screw nut.



Check if all connection parts are connected well after finishing the installation, then open the water to check if any leakage exists.