

## **AFTERCARE INSTRUCTIONS**

Your fitting has a high quality finish and should be treated with care to preserve the visible surfaces.

All surface finishes will wear if not cleaned correctly, the only safe way to clean your mixer is to wipe with a soft damp cloth. Stains can be removed using washing up liquid. All bath cleaning powders and liquids will damage the surface of your fitting, even the non-scratch cleaners. **NOTE: Never use abrasive detergents or disinfectants or those containing alcohol, hydrochloric acid or phosphoric acid.**

Bristan recommend E-Cloth for cleaning all of our bathroom & kitchen products. Using just water, E-cloth gives a smear free, deep clean by breaking up and holding dirt, which normal cloths leave behind. Order through your Bristan stockist. (ORDER CODE: ECLOTH)



## **GUARANTEE**

All products are manufactured to the highest standards and a 5 year guarantee covers any defect in manufacture.

**NOTE: The 5-year guarantee on the cartridge is invalidated if damaged by any waterborne debris.**

**All products must have access for servicing or replacement during the life of the product.**

In the interests of continuous product development we reserve the right to alter specification as necessary

**TELEPHONE HELPLINE: 0844 701 6273**

Bristan Group Limited  
Birch Coppice Business Park  
Dordon  
Tamworth  
Staffordshire  
B78 1SG  
UK  
A Masco Company  
Website: [www.bristan.com](http://www.bristan.com)  
Telephone: 0844 701 6274  
Facsimile: 0844 701 6275  
Email: [enquire@bristan.com](mailto:enquire@bristan.com)

# BRISTAN

## Wall Mounted Bridge Sink Mixer

## Fitting Instructions & Contents List



Before starting any installation project, consider 'safety' first. Look for the 'safety note' and read the safety advice.

**Please keep these instructions for future reference and request of replacement part**

## WATER PRESSURE

This mixer is suitable for use at all supply pressures. However for optimum use both the hot and cold supplies should be reasonably balanced.

**Operating Pressures: Min 0.2 bar, Max 8.0 bar.**

If the fitting is installed at low pressure (tank fed), then the minimum distance from the highest installed position of the shower head to the underside of the cold tank should be 2 metres to ensure adequate shower performance.

This mixer should be installed in compliance with the Water Regulations. Where the supplies are unbalanced, i.e. hot water from cylinder tank / cold from the mains, approved check valves must be fitted in the supply pipes.

For further details contact your Local Water Authority.

## **IMPORTANT - PLEASE READ**

**This fitting needs to be installed in accordance with the following Installation Requirements and Notes (IRN) to ensure they meet the requirements of the Water Supply (Water Fittings) Regulations 1999 and the Scottish Byelaws 2004.**

### **IRN R001**

See text of entry for Installation Requirements or Notes.

### **IRN R040 Schedule 2-15 (1)**

The fitting shall be installed so that its outlet discharges above the spill-over level of any fixed appliance as indicated below:-

**For backflow protection in domestic or installations up to, and including, Fluid Category 3.**

1. Size of tap or combination fitting.	2. Vertical distance of outlet above spill-over level.
1. Not exceeding 1/2in	20mm
2. Exceeding 1/2in but not exceeding 3/4in	25mm
3. Exceeding 3/4in	70mm

If the fitting cannot be installed as indicated in the table it shall be installed:

- with an approved double check valve assembly or some other no less effective backflow prevention device immediately upstream of the inlet; or
- so that it draws water by gravity only from a cistern, or cylinder having a permanently open vent pipe, and the distributing pipe supplies no other fittings (other than a draining tap) at a lower level.

**For backflow protection in premises or installations up to, and including Fluid Category 5.**

The vertical distance of the outlet above the spill-over level shall be not less than 20mm or twice the diameter of the inlet pipe to the fitting, whichever is the greater. If the fitting cannot be installed as indicated it shall be installed with a backflow prevention arrangement suitable for the Fluid Category.

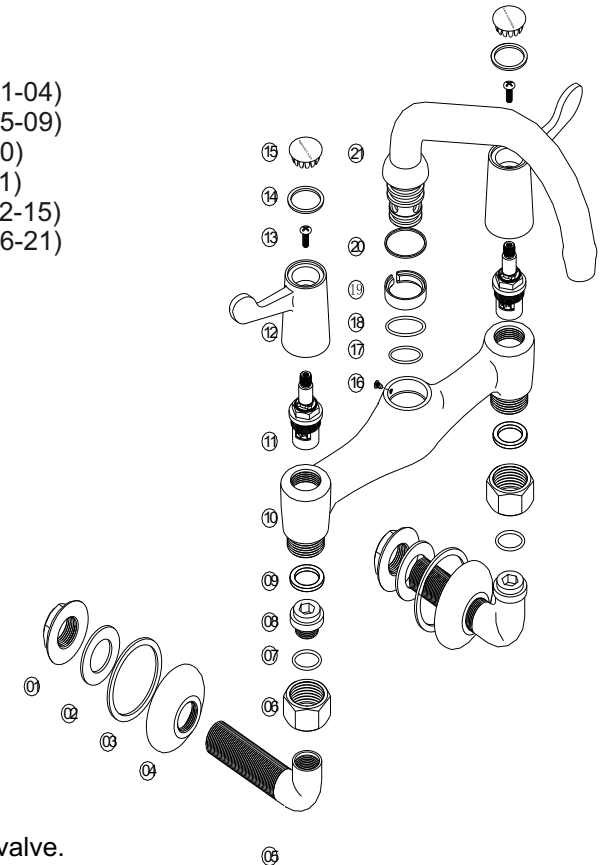
## INSTALLATION

1. Identify all components and check for completeness, particularly before arranging installation.
2. Fit the nozzle to the body, using the plastic 'C' washer in the groove above the 'O' rings.
3. Fit the elbows to the body using the plastic sealing washers.
4. Fit elbows to the wall in required position using backnuts and washers provided.
5. Connect the elbows to the water supplies using 15mm tap connectors (not supplied).
6. Connect the hot and cold water supplies.
7. Turn on the water supplies. Open both valves letting the water flow for a few minutes to flush the system.
8. Check all joints and connections for leaks.
9. See over the page for aftercare instructions.

## CONTENTS

BACK NUT KIT	(01-04)
INLET TAIL KIT	(05-09)
VALVE BODY	(10)
CARTRIDGE	(11)
HANDLE & INDICE KIT	(12-15)
SPOUT KIT	(16-21)

**VAL WMBRSM C 6 CD**  
**VAL WMBRSM C CD**  
**VAL WMSNK C CD**



## MAINTENANCE

If the fitting begins to drip:

1. Turn off the water supply.
2. Remove fitting head and valve.
3. Carefully clean seating and rubber washer.
4. Replace valve and turn on the water supply.
5. Contact our helpline if problem persists.