

## Prism Diverter (Two Outlets / Three Outlets)

### Fitting Instructions & Contents List



Before starting any installation project, consider "Safety" first. Look for the "safety note" sign and read the safety advice.

Prior to drilling into walls, check there are no hidden electrical wires, cables or water supply pipes with the aid of an electronic detector. If you use power tools do not forget:

- Wear eye protection
- Unplug equipment after use

**Please Keep These Instructions for Future Reference and Request of Replacement Parts.**

This diverter is intended to be used in conjunction with other products, such as the Shower valves and/or stopcocks and spray outlets from the Bristan Prism range in order to create a system to suit your requirements.

## WATER PRESSURE

This valve is suitable for use at all supply pressures up to 8.0 bar. However, the minimum work pressure will depend upon what the diverter will be connected to. Installation should be in compliance with Water Regulations. For further details contact your Local Water Authority.

## CONTENTS

- |   |   |
|---|---|
| 1. Diverter body                                  | 2. Diverter cartridge                   |
| 3. Retaining nut                                  | 4. Concealing plate gasket              |
| 5. Concealing plate                               | 6. Shroud                               |
| 7. Spline adaptor washer                          | 8. Spline adaptor                       |
| 9. Handle   | 10. Grub screw                          |
| 11. Cap   | 12. Screw (x2)                          |
| 13. Wall Plug (x2)                                | 14. Olive (x3, 2 outlet)/(x4, 3 outlet) |
| 15. Compression nut (x3, 2 outlet)/(x4, 3 outlet) |   |

## INSTALLATION

The diverter is designed to be arranged in your system to alternate a supply of pre-mixed water between three outlets e.g. a fixed head, adjustable riser kit, bath spout or body jets.

*The 2 outlet divert has 3 15mm compression connections 1 inlet and 2 outlets.*

*The 3 outlet divert has 4 15mm compression connections 1 inlet and 3 outlets*

**Note:- The inlet to the diverter is marked with an arrow on the underside of the diverter and the outlets are marked with the letters V and D.**

1. Identify all components and check for completeness, particularly before arranging fitting.

**Note - any new pipe work should be thoroughly flushed before any connections are made.**

2. It is important to measure up the application of the valve so that positioning will allow the concealing plate (5) to be fitted behind, and held in place against the finished wall by the shroud (6).

3. Place the diverter into the wall cavity and connect the inlet to the mixed water supply using nut (15) and olive (14) to the diverter body.

4. Connect outlets to installed fittings using the nuts (15) and olives (14) to the diverter body. The fixing screws (12), wall plugs (13) can be used where necessary.

5. Fully open water supplies and run for a few minutes to check both correct diverter function and for leaking from joints / connections by turning the spindle and alternating between the outlets.

6. Complete wall finish ensuring depth is correct to allow for fitting of concealing plate (5) and handle (9).

**Note - It is important to leave a gap around the retaining nut (3) to allow removal for servicing.**

7. Once dry, fit concealing plate (5) against wall with gaskets (4) in place.

8. Fit handle (9), secure using grub screw (10) and finish with cap (11).

9. See over the page for aftercare instructions.

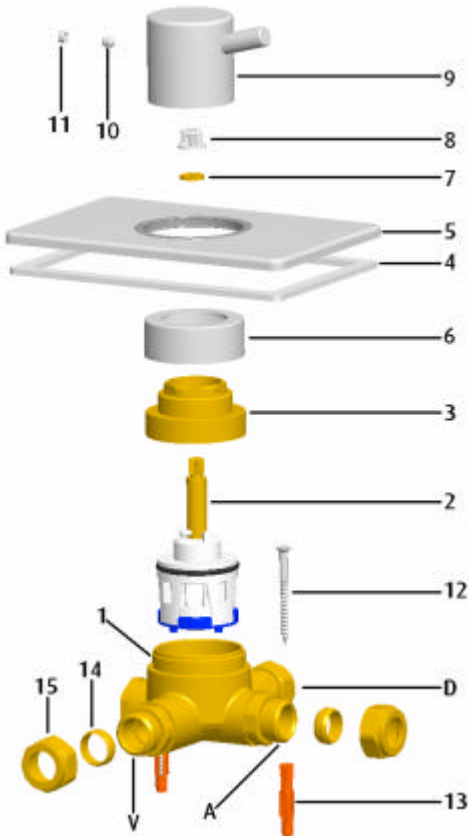
## OPERATION

### 2 Outlet Diverter

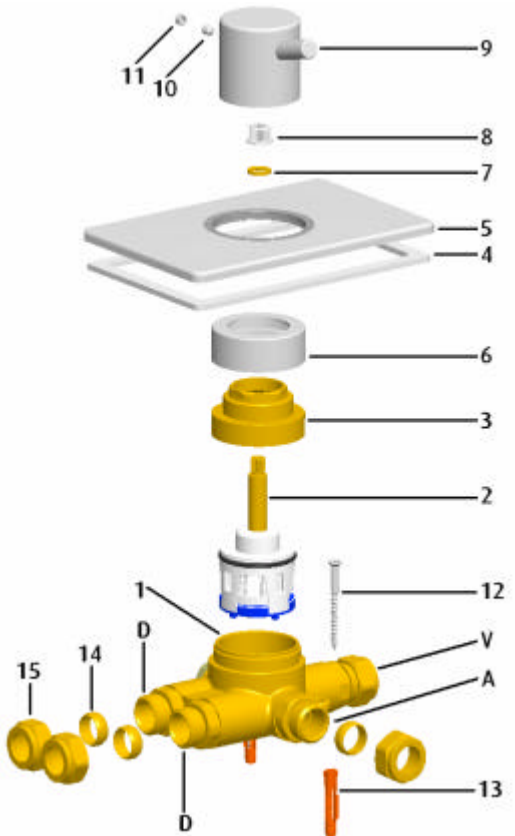
This has 2 main positions, Outlet V open, and D open There is a 3rd outlet combining outlet V and D but at a reduced flow.

### 3 Outlet Diverter

This has 3 main positions, Outlet V open, Top Outlet D Open and Bottom Outlet D Open. There is also a 4th outlet option, which is outlet V with a reduced flow.



**2 Outlet Diverter**



**3 Outlet Diverter**

## MAINTENANCE

### If the fitting begins to drip:

1. Remove handle (9) by prising out the cap (11) and loosening grub screw (10). Remove the concealing plate (5) and the shroud (6).
2. Unscrew the retaining nut (3) and carefully pull the cartridge (2) out of the diverter body.
3. Check cartridge seals and ceramic discs for damage and debris.
4. Re-assemble and replace the concealing, shroud (6), plate (5) and handle (9) and test.
5. Contact our help line if problem persists.

## **AFTERCARE INSTRUCTIONS**

Your fitting has a high quality finish and should be treated with care to preserve the visible surfaces.

All surface finishes will wear if not cleaned correctly, the only safe way to clean your fitting is to wipe with a soft damp cloth. Stains can be removed using washing up liquid. All bath cleaning powders and liquids will damage the surface of your fitting even the non-scratch cleaners.

## **GUARANTEE**

All products are manufactured to the highest standards and a 5 year guarantee covers any defect in manufacture.

**NOTE: - the 5 year guarantee on the valve is invalidated if damaged by any waterborne debris.**

In the interests of continuous product development we reserve the right to alter specification as necessary

**PRODUCT CODE: PM 3WDIV C / PM 5WDIV C**

**TELEPHONE HELP LINE! 0844 701 6273**

Bristan Group Ltd.  
Birch Coppice Business Park  
Dordon  
Tamworth  
Staffordshire  
B78 1SG  
UK

A Masco Company

Web Site: [www.bristan.com](http://www.bristan.com)  
Telephone: 0844 701 6274  
Facsimile: 0844 701 6275  
Email: [enquire@bristan.com](mailto:enquire@bristan.com)  
(FI PM DIV) (REV.D5)

(MZ)