

AFTERCARE INSTRUCTIONS

Your fitting has a high quality finish and should be treated with care to preserve the visible surfaces. All surface finishes will wear if not cleaned correctly, the only safe way to clean your mixer is to wipe with a soft damp cloth. Stains can be removed using washing up liquid. All bath cleaning powders and liquids will damage the surface of your fitting even the non-scratch cleaners.

GUARANTEE

All products are manufactured to the highest standards and a 5 year guarantee covers any defect in manufacture.

NOTE: The 5 year guarantee on the valves is invalidated if damaged by any waterborne debris.

In the interests of continuous product development we reserve the right to alter specification as necessary.

PRODUCT CODE: PM 3HWMBF C
TELEPHONE HELP LINE: 0844 701 6273

Bristan Group Ltd
Birch Coppice Business Park
Dordon
Tamworth
Staffordshire
B78 1SG
UK
A Masco Company

Web Site: www.bristan.com
Telephone: 0844 701 6273
Facsimile: 0844 701 6275
Email: enquire@bristan.com

(FI PM 3HWMBF)

(D3)

(ST)

BRISTAN

Prism Three Hole Wall Mounted Bath Filler



Before starting any installation project, consider “safety” first. Look for the “safety note” sign and read the safety advice.

Fitting Instructions & Contents List

Please keep these instructions for future reference and for the ordering of spare parts.

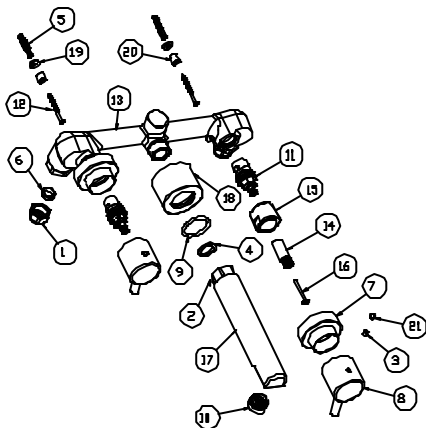
WATER PRESSURE

This mixer is suitable for use at all supply pressures. However for optimum use, both the hot and cold supplies should be reasonably balanced. If the fitting is installed at low pressure (tank fed), then the minimum distance from the outlet of the nozzle to the underside of the cold tank should be approximately 2 metres to ensure adequate performance. This mixer should be installed in compliance with Water Regulations. Where the supplies are unbalanced, i.e. hot water from the cylinder tank / cold from the mains, approved check valves must be fitted in the supply pipes.

For further details contact your Local Water Authority.

CONTENTS

1. Fixing Nut	(x2)
2. Nut for Spout	(x1)
3. Grub Screw	(x2)
4. Washer for Spout	(x1)
5. Rawl Plug	(x2)
6. Olive	(x2)
7. Handle Shroud	(x2)
8. Handle	(x2)
9. O ring for Spout	(x1)
10. Flow Straightener	(x1)
11. Valve-Hot & Cold	(x2)
12. Screw	(x2)
13. Mixer Body	(x1)
14. Handle Spline	(x2)
15. Valve Shroud	(x2)
16. Spline Screw	(x2)
17. Spout	(x1)
18. Spout Shroud	(x1)
19. Washer	(x2)
20. Screw Spacer	(x2)
21. Handle Cap	(x2)



Please Note: In the unlikely event you find a part missing please contact our Customer Service Help line on 0844 701 6273 or email enquire@bristan.com for immediate dispatch of part.

INSTALLATION

Prior to drilling into walls, check there are no hidden electrical wires, cables or water supply pipes with the aid of an electronic detector. If you use power tools do not forget to:

- Wear eye protection
- Unplug equipment after use



1. Identify all components and check for completeness, particularly before arranging fitting.
2. Decide on the final position of the bath filler body (13).
3. Plumb up the hot and cold supply pipes to the required position.
4. Attach pipework to the hot and cold inlets using the nuts (1) and olives (6).
5. Secure mixer body (13) using the screws (12), spacers (20), washers (19) and rawl plugs (5).

NOTE: - Before finishing wall turn on water supplies to check both correct mixer function and for leaking from connections.

6. Set fitting into wall and complete wall finish. Note! It is important that the spout (17) is not damaged and that sufficient thread is left exposed to allow the spout (17) and the valve shrouds (15) to fit.
7. Fit spout (17) and the spout washer (4), then screw on valve shrouds (15). **NOTE:** - Use suitable sealant on the shrouds.
8. Slide on spout shroud (18) and attach handles (8) with grub screws (3) and handle caps (21).
9. See over the page for aftercare instruction

MAINTENANCE

If the fitting begins to drip:

1. Turn off the water supply.
2. Remove cap (21) and grub screw (3), then remove handle (8) by pulling from spline (14). Unscrew both shroud (7) and valve shroud (15). The handle spline (14) may then be removed.
3. Remove valve clip and then unscrew valve (11). Once removed, carefully clean seating and all exposed parts.
4. Replace all of the above then turn on the water supply.
5. If problem persists contact our helpline quoting the product code.