

## **AFTERCARE INSTRUCTIONS**

Your fitting has a high quality finish and should be treated with care to preserve the visible surfaces.

All surface finishes will wear if not cleaned correctly, the only safe way to clean your mixer is to wipe with a soft damp cloth. Stains can be removed using washing up liquid. All bath cleaning powders and liquids will damage the surface of your fitting, even the non-scratch cleaners. **NOTE: Never use abrasive detergents or disinfectants or those containing alcohol, hydrochloric acid or phosphoric acid.**

Bristan recommend E-Cloth for cleaning all of our bathroom & kitchen products. Using just water, E-cloth gives a smear free, deep clean by breaking up and holding dirt, which normal cloths leave behind. Order through your Bristan stockist. (ORDER CODE: ECLOTH)



## **GUARANTEE**

All products are manufactured to the highest standards and a 5 year guarantee covers any defect in manufacture.

**NOTE: The 5-year guarantee on the cartridge is invalidated if damaged by any waterborne debris.**

In the interests of continuous product development we reserve the right to alter specification as necessary

## **PRODUCT CODE: J SFSNK C**

**PRODUCT IDENTIFICATION CODE LASER ETCHED ON PRODUCT**

Installer please fill in code here \_\_\_\_\_.

## **TELEPHONE HELPLINE: 0844 701 6273**

Bristan Group Limited  
Birch Coppice Business Park  
Dordon  
Tamworth  
Staffordshire  
B78 1SG  
UK  
A Masco Company  
Website: [www.bristan.com](http://www.bristan.com)  
Telephone: 0844 701 6274  
Facsimile: 0844 701 6275  
Email: [enquire@bristan.com](mailto:enquire@bristan.com)

(FI J SFSNK)

(Rev.D7)

# BRISTAN

## **Java Single Flow Monobloc Sink Mixer**

## **Fitting Instructions & Contents List**

Before starting any installation project please consider:

Prior to drilling into walls, check there are no hidden electrical wires, cables or water supply pipes with the aid of an electronic detector. If you use power tools do not forget:

- Wear eye protection
- Unplug equipment after use



**Please keep these instructions for future reference and request of replacement part**

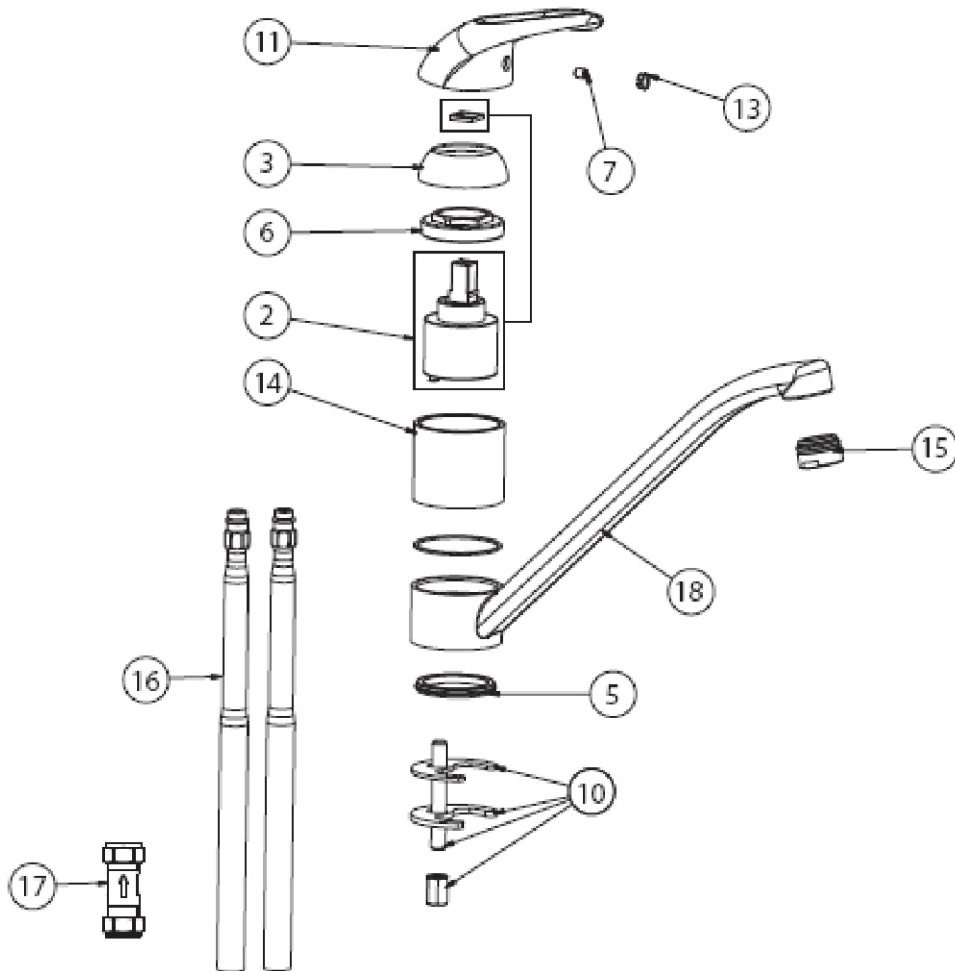
## WATER PRESSURE

This mixer is suitable for use at all supply pressures. However for optimum use both the hot and cold supplies should be reasonably balanced.

If the fitting is installed at low pressure (tank fed), then the minimum distance from the highest installed position of the water outlet to the underside of the cold tank should be at least 2.0 metres to ensure adequate performance.

### Operating Pressures: Min 0.2 bar, Max 8.0 bar.

This mixer should be installed in compliance with the Water Regulations. Where the supplies are unbalanced, i.e. hot water from cylinder tank / cold from the mains, the check valve (supplied) must be fitted to the hot supply. For further details contact your Local Water Authority.



## INSTALLATION

1. Identify all components and check for completeness, particularly before arranging fitting.
2. Fit the mixer body (18) to the sink using the 'C' plate fixing kit (10). The full rubber washer goes between the fitting and the sink, and the 'C' shaped washers on the underside of the sink.
3. Fit the tail pipes (16) to the fitting **(BY HAND ONLY) - (DO NOT OVERTIGHTEN)**. Fit the check valve (17) on the hot water supplies.
4. Connect the hot and cold supplies. Fully open both valves, letting them run for a few minutes to flush out the system.
5. Check all joints and connections for leaks.
6. See over the page for aftercare instructions.

## MAINTENANCE

If the fitting begins to drip

1. Turn off both water supplies.
2. Remove cap (13), grub screw (7) and pull off head (11).
3. Remove cover (3) and remove cartridge retaining nut (6) using a spanner.
4. Pull out cartridge (2) and clean seating and rubber seals.
5. Replace cartridge assembly and turn on the water supplies.
6. Contact our helpline if problem persists.