

## Installation Recommendations

The pipework must be thoroughly flushed to remove any debris before installation. Ensure water flow corresponds with flow direction on valve. Install in a position with access for maintenance. Isolating valves should be fitted (if applicable) for maintenance purposes. Do not use jointing compounds on the valve. Ensure that the installation complies with Local and National Water Regulations.

Concealed valve - The concealed valve is manufactured with side bosses to allow for side fixing of the concealing plate. After pipework has been fitted, Slide sleeve Grommet onto valve body, fit sub plate onto grommet and Secure with screws into tapped holes in body. Clip the concealing plate into Position.

## Operating Instructions

Minimum Pressure Drop Through Fitting For Correct Mixing : 0.1 bar  
Maximum Pressure Drop Through Fitting For Correct Mixing : 4 bar  
Maximum Static Pressure To Be Applied To Fitting : 10 bar

Depress push button, the timeflow valve will give a steady flow of water for between 50 - 70 seconds before shutting off completely.

## Economy

The valve is supplied with a flow limiter which Should be fitted at supply pressures above 0.5 bar, giving an economical shower in either Group or single applications.

## Service & Maintenance

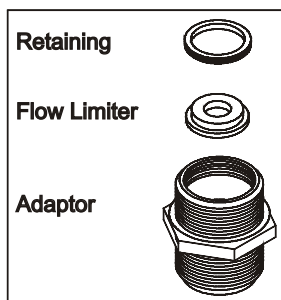
The valve should give continued performance Provided the valve is installed, operated and maintained with recommendations made. Periodic attention is given to keep product in functional order. Spare parts are available, subject to supply.

## Recommendations

Replace worn or damaged seals, Clean metal parts in de-scalent.

## Installation - MEFC2000DM

1. Remove Timeflow valve body from Extension tube by releasing both Grubscrews On the Control head and then unscrewing the Extension tube.
  2. Remove Backnut from the Extension tube and feed into a 25mm hole in wall
  3. Re-fit Backnut to Extension tube ensuring correct orientation.
- Note :- If cutting the Extension tube to size, ensure that it is square and that at least 20mm of thread is protruding from the Backnut.  
Dress the tube and push rod removing all sharp edges.
4. Fit the Timeflow body to the Extension tube ensuring that the Extension tube is Fully screwed into the Timeflow body.
  5. Tighten both Grubscrews in the Control head thus securing the Extension tube.
  6. Rotate Backnut until firmly secured at back of wall and tighten.



# BRISTAN

## MEFC2000ECP / MEFC2000CCP MEFC2000DM

Operating instructions for Exposed and  
Concealed installation models

Bristan Group Ltd  
Birch Coppice Business Park  
Dordon  
Tamworth  
Staffordshire  
B78 1SG  
T: 0844 7016274  
E: [customer care@bristan.com](mailto:customer care@bristan.com)

800451/D

## GUARANTEE - SERVICE POLICY (Available in UK and ROI only)

This product is guaranteed against faulty materials and workmanship for 12 months from date of purchase. For the guarantee to be valid, the unit must be installed by a competent person, in accordance with the instruction booklet. Any part found to be defective during the guarantee period, will (at our option) be repaired or replaced, free of charge, provided the unit has been installed, and properly used in accordance with the instruction booklet. This guarantee does not affect your statutory rights.

Please have the following handy: Model type, Date of purchase, Product number (if available).

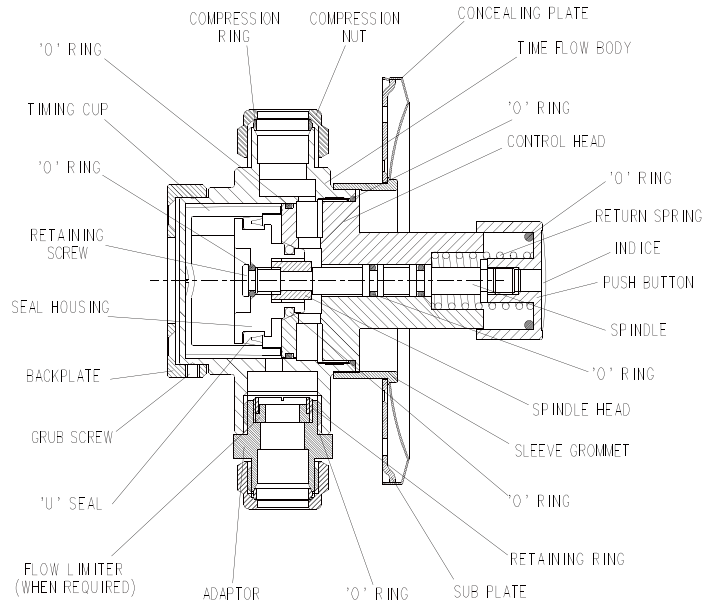
The Customer Service Department will attempt to diagnose the cause of the fault and advise the necessary action to resolve the problem over the phone. If the fault can not be resolved and a service call is required, a Site Visit Request form will be sent to you to complete and return.

Where applicable a fixed fee payment for parts and/or labour will be levied. The cost incurred and payment methods will be advised over the phone and on the Site Visit Request form. A completed form, along with payment (if applicable) must be received before the Service callout can be arranged. If the fault is not product related or is a component not of our manufacture, a fixed fee will be made to cover Site visit costs. Additional costs for parts used to rectify related problem may be imposed.

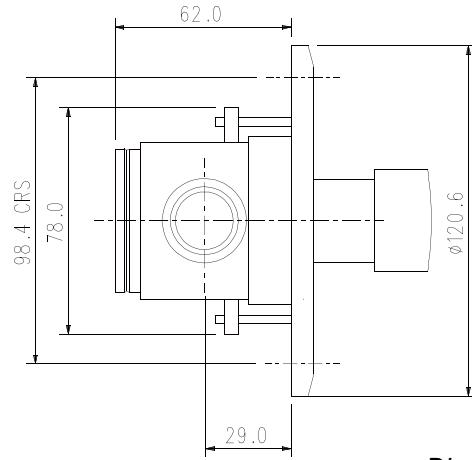
During the visit, yourself or a responsible person should be present at all times. Charges will be made if the Service Engineer or Agent can not gain site access at the prearranged time.

Ensure water and/or electricity supplies have adequate isolation to the unit. If the unit is concealed, serviceable access should be available. If servicing difficulties arise from not making the provisions detailed, additional time related costs or a recall charge will be imposed.

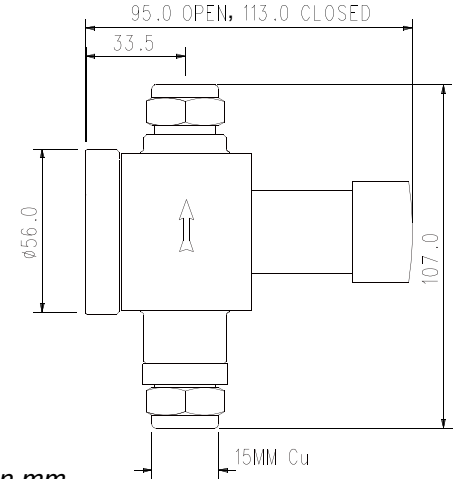
Customer Care  0844 7016273



**MEFC2000CCP**

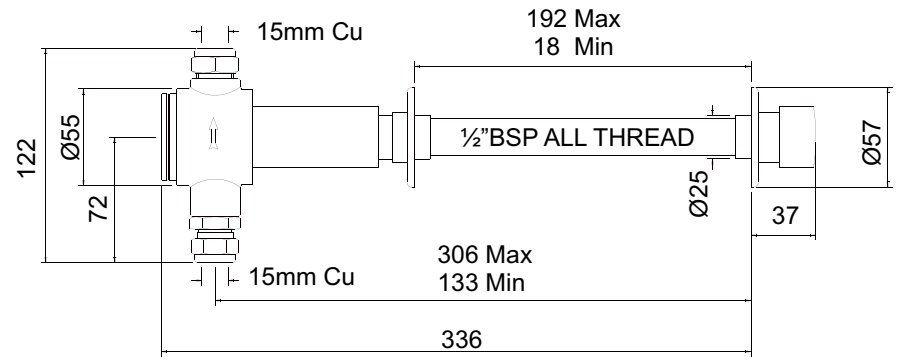


**MEFC2000ECP**



*Dimensions in mm.*

*Diagrams are for reference only.*



**MEFC2000DM**

