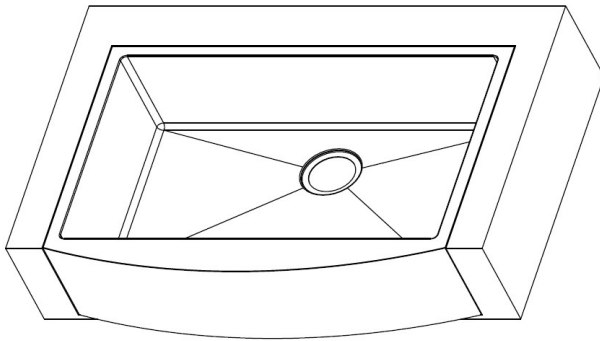




Belfast Sink



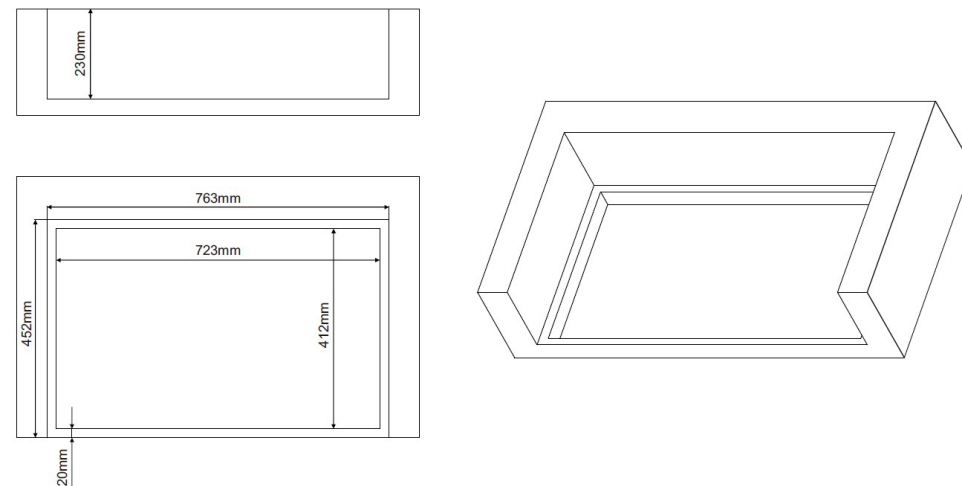
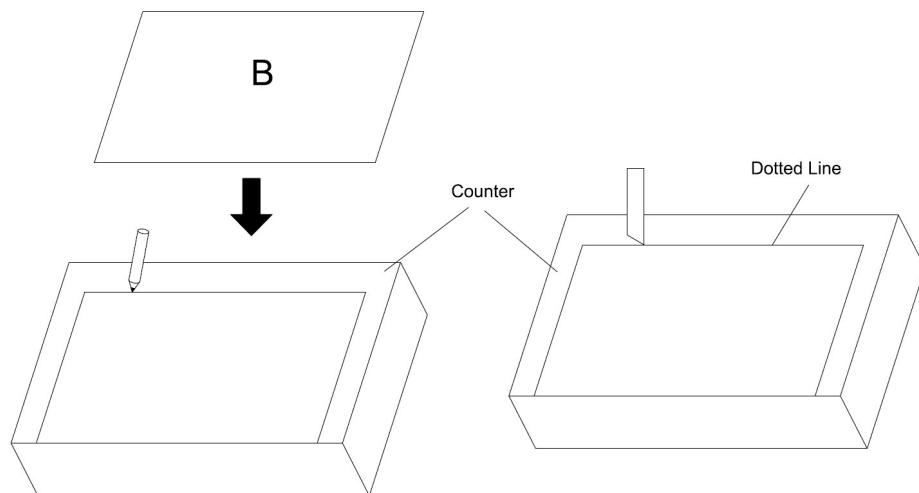
INSTALLATION INSTRUCTIONS

Please follow these care instructions to ensure your product retains it's high quality finish and please retain this leaflet for future reference.

No.	Description	Picture	Qty
A	Kitchen Sink		1
B	Cutout Template		1

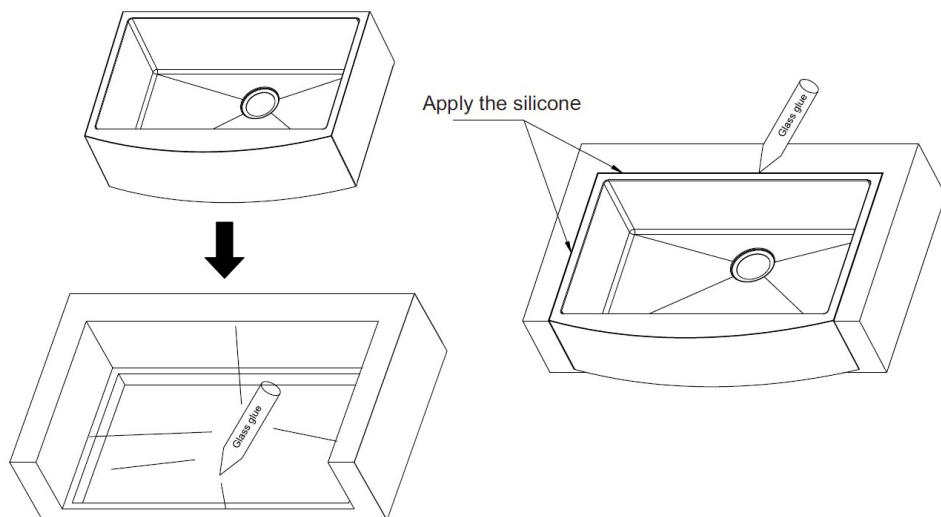
Step 1: Template & Preparation

- Using the template provided place onto the chosen work surface and using a suitable pencil mark the outer edge
- Cut out the work surface along the pencil lines using an appropriate saw/jigsaw



Step 2: Sink Installation

- Carefully apply a bead of good quality sealant along the edge of the cut work surface
- Place the basin into position and press down gently to ensure a secure fit
- Finally, pipe a fine bead around the outer edge of the sink edge using a good quality silicone sealant in either a colour match or clear finish.



WARNING!

We recommend that this product is installed by a qualified tradesperson and we accept no liability for products fitted incorrectly.