

NEW

Quiet Fan X5 Conceal Domestic Range

QF100 X5 CONCEAL

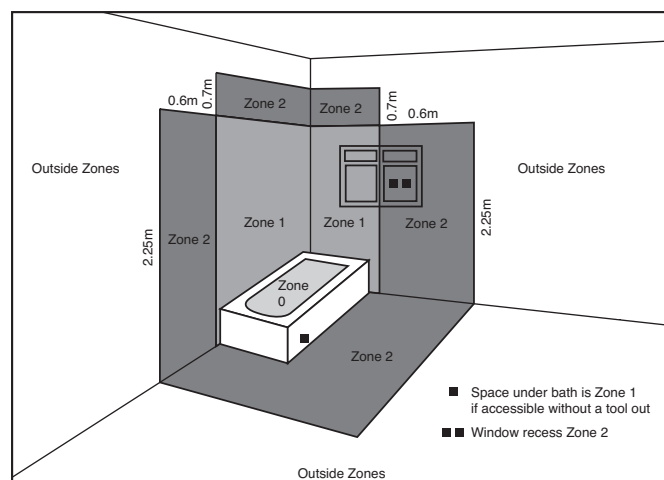


The Manrose Quiet Fan X5 Conceal is the latest in domestic ventilation to incorporate a high extraction rate whilst producing an incredibly quiet running volume all with the additional flexibility of being IPX5 compliant. IEE Regulations (U.K.) allow for IPX5 fans to be installed into zone 1 without the need for low voltage transformer making this comprehensive range ideal for bathrooms and toilets.

The unit also comes complete with a performance enhancing turning vane system located in the spigot to improve performance by maintaining a high output.

- IPX5 rated for compliant zone 1 installation
- High quality, long life motors continuously rated and warranted for a minimum of 30,000 hours or 3 years
- Decibel Level of ONLY 28dB(A) at 3m.
- Manufactured using high gloss ABS thermoplastics for strength and durability
- An impressive extraction rate of 75m³/hr, 21 litres per second
- Low energy motor with a maximum consumption of 6 Watts
- Low SFP of just 0.29W/l/s
- Complete with integral backdraught shutters
- Complies with both Part F & L
- Suitable for ceiling or wall mounting
- Made in the UK

Bathroom Zone Diagram



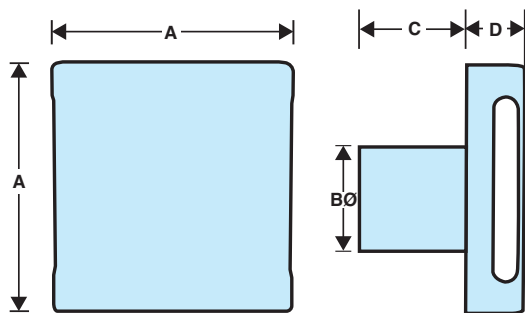
Technical Details

Cat. No. Product type

- QF100SX5CON** Standard model suitable for zone 1 installation
- QF100TX5CON** Timer model incorporating an adjustable run on timer (5-30mins)
- QF100HTX5CON** Humidity control model with adjustable run on timer (5-30mins). Humidity adjustable between 40%-90% rH

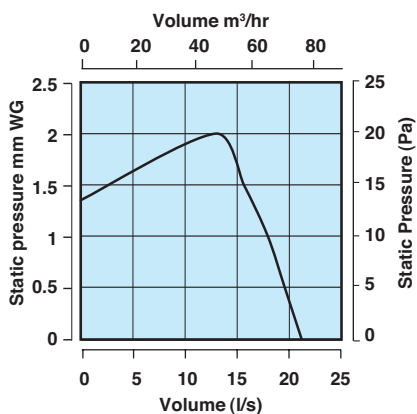
Dimensions (mm)

A	BØ	C	D
160	99	80	40



Performance Graph

QF100 X5 Conceal 75m³/hr, 21 litres per second



Packaging

Quiet fan IPX5 range packed in outers of 10. Contact our technical department for packaging dimensions.

Electrical

220-240V~50Hz AC Single Phase consuming 6 Watts. These fans are double insulated and do not require an earth. All wiring must comply with current IEE regulations. A double pole isolating switch, having a contact separation of at least 3mm in all poles, must be used with a 3 amp fuse fitted.

Additional Data

- Flow Rate: 21l/s, 75m³/hr
- Sound Volume: 28 dB(A)
- Maximum Operating Temperature: 40°C
- Operating wattage: 6W
- Warranty: 3 years
- IP Rating: IPX5, Zone 1 Compliant