

AREZZO

Modern Cistern Lever

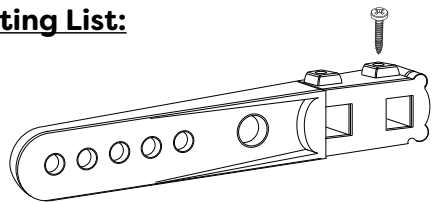
Before you Begin:

- This instruction shows how to fit the cistern lever for close coupled/low level cisterns. Ensure the cistern lever is the correct size and position with your chosen cistern.
- **We recommend that this product is installed by a qualified tradesperson.** Victorian Plumbing Ltd. accept no liability for products incorrectly installed, or where the correct testing procedures have not been adhered to, thus resulting in the escape of water and consequential damage.
- Ensure the incoming mains water supply is switched off prior to commencing the installation.
- Observe all local plumbing and building codes & regulations.
- Unpack the product then read these instructions before proceeding. Inspect the product for damage. If any damage is found, contact our Customer Relations team.

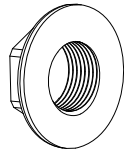
1

Make sure that all components are present prior to installation.

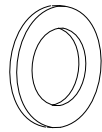
Fitting List:



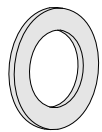
Lever Arm



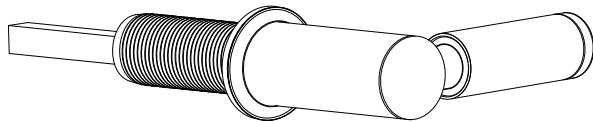
Back Nut



Plastic Washer



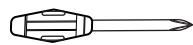
Silicone Washer



Cistern Handle

Note: Diagrams are for illustration purposes only. Your cistern lever may superficially differ from this drawing however the installation guide steps still apply.

Tool Required:



Screw Driver



Adjustable Wrench

Recycling and Disposal:

- Please recycle the packaging in accordance with your local government regulations on waste handling and follow the same advice at the end of the products life.

Cleaning and Aftercare:

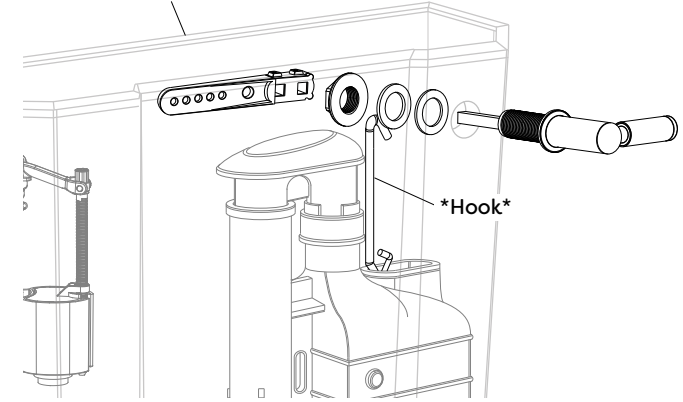
- **Warning:** Do not use abrasives, scourers, bleach or any type of chemical cleaning solution when cleaning the cistern lever. It is recommended to use warm soapy water and a clean damp cloth.

2

Remove the back nut and washers from cistern lever handle. Insert the handle into the flush hole on the cistern.

Secure into place by screwing the silicone washer, plastic washer and back nut onto the threaded tail of the handle. Place the lever arm onto the spindle

Cistern and Siphon for clarity

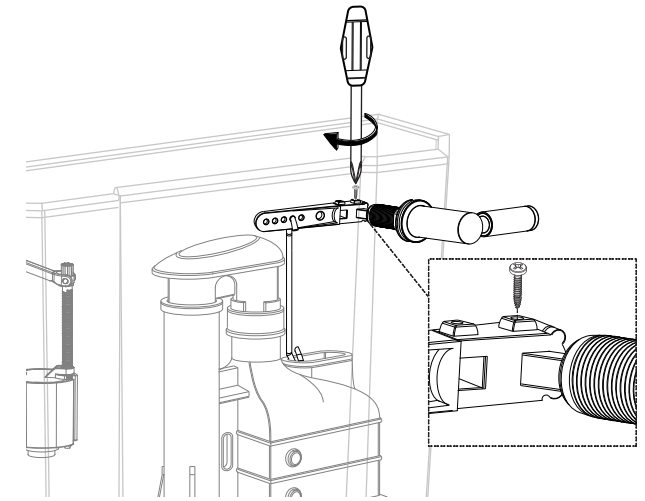


3

Attach the hook from the siphon to the lever arm in a suitable hole. Secure the handle into place by screwing the set screw onto the spindle. Test the handle to ensure the flush mechanism is working as intended.

(Note: When attaching the hook from the siphon to the lever arm, ensure the hook is aligned in the vertical position when attached.)

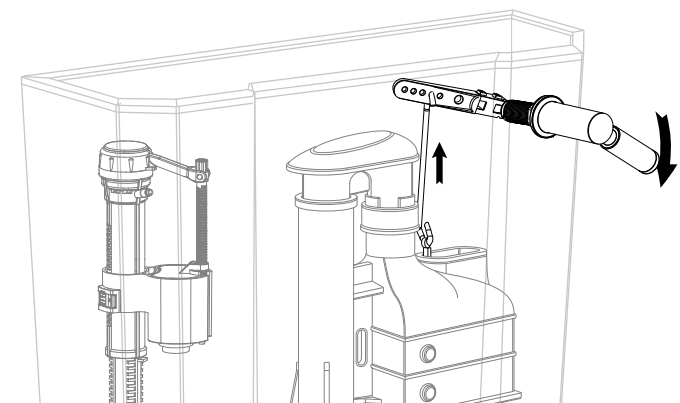
Ensure the handle and lever arm is fitted in the correct orientation.)



4

Once assembly is completed, turn on the water supply and test the flush operation.

Check that the lever engages the syphon properly (that the hook on the siphon is properly connected to the lever arm).



For more information visit: www.victorianplumbing.co.uk