

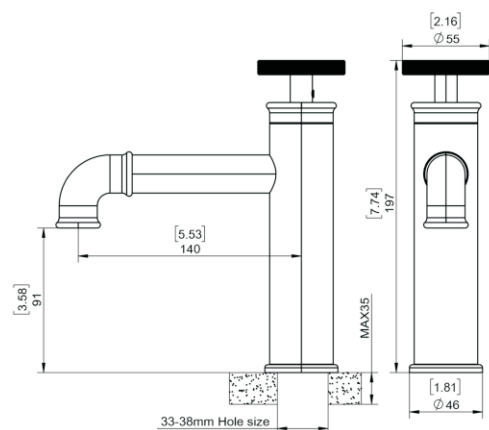
SINGLE HANDLE BASIN FAUCET

For easy installation of your dooa faucet you will need :

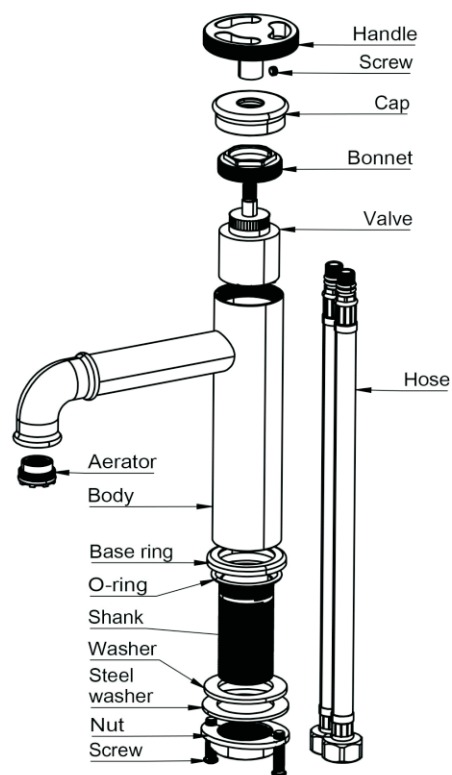
To **read all** the instruction completely before beginning.
To **read all** warnings, care, and maintenance information

All the information is based on the latest published product information. Dooa reserves the right to change the features, packaging or type of product available at any time without notice.

Specification sheet



Parts diagram



Matters need a tention

This instruction manual contains important installation, maintenance and cleaning information. Please give this information to the user or.

- 1.Flush piping system prior and after installation of fitting thoroughly!
- 2.Install faucets before installing washbasins, if possible.
- 3.Check the water supply pipe for damage and leakage. Replace and repair if necessary.
- 4.Comply with local piping installation regulations.
- 5.Cut off the water supply.

Specifications

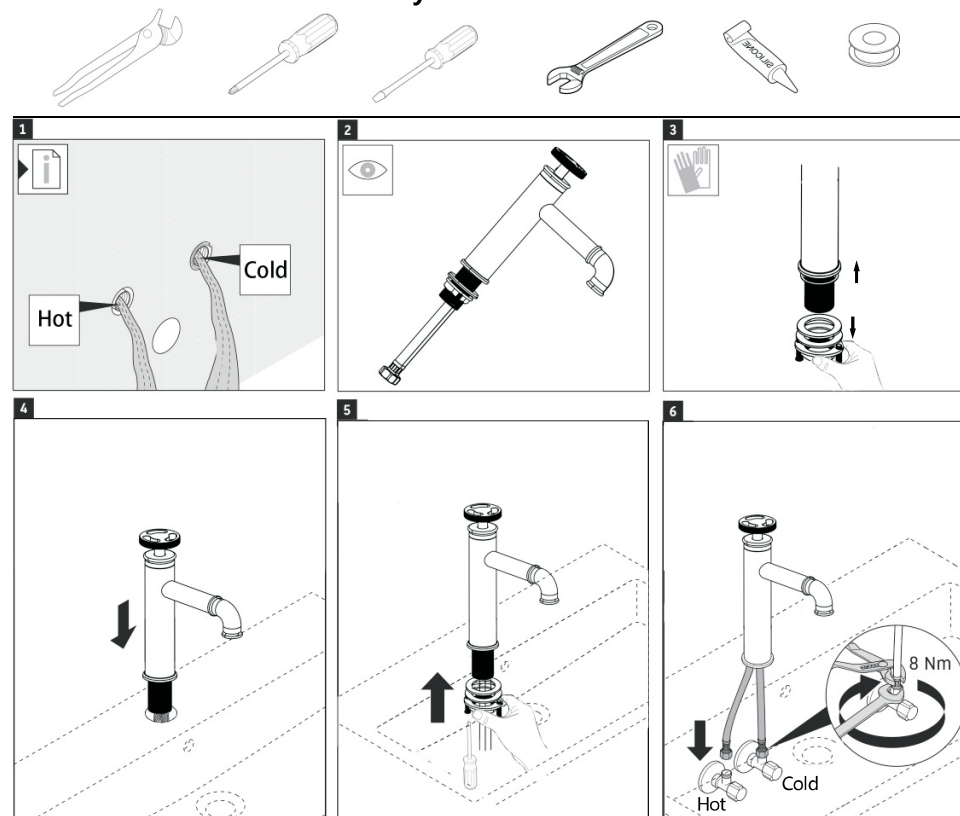
Flow pressure: min.0.05MPa -recommended 0.1-0.5MPa
Operating pressure: max. 1.0MPa
Hot water inlet temperature: max. 90°C
Recommended (energy saving): 60°C
Environment temperature: 5°C~45°C

If static pressure exceed 0.5Mpa, a pressure-reducing valve must be fitted.
avoid major pressure differences between hot and cold water supply

Instructions for use

Turn the handle clockwise for hot water and counterclockwise for cold water.

You may need these tools



Function

Check connections for leaks and check function of fitting.

Maintenance

Inspect and clean all components and replace if necessary. Shut off water supply for maintenance work.

Clean

Do not use abrasive sponges, scouring agents, organic solvents or acidic cleaners, limescale removers, household vinegar or cleaners containing acetic acid for cleaning.

